

Company:
Name:
Date: 05/20/2024



Pump:

Size: 1.5x3-10
Type: 2196 ANSI
Synch Speed: 3600 rpm
Dia: 10 in
Curve: ---
Impeller: 96M101F

Dimensions:
Suction: 3 in
Discharge: 1.5 in

Fluid:

Name: Water
SG: 1
Density: 62.4 lb/ft³
Viscosity: 1.1 cP
Temperature: 60 °F

Vapor Pressure: 0.256 psi a
Atm Pressure: 14.7 psi a
Margin Ratio: 1

Search Criteria:

Flow: --- Near Miss: ---
Head: --- Static Head: 0 ft

Pump Limits:

Temperature: --- Sphere Size: 0.21 in
Wkg Pressure: ---

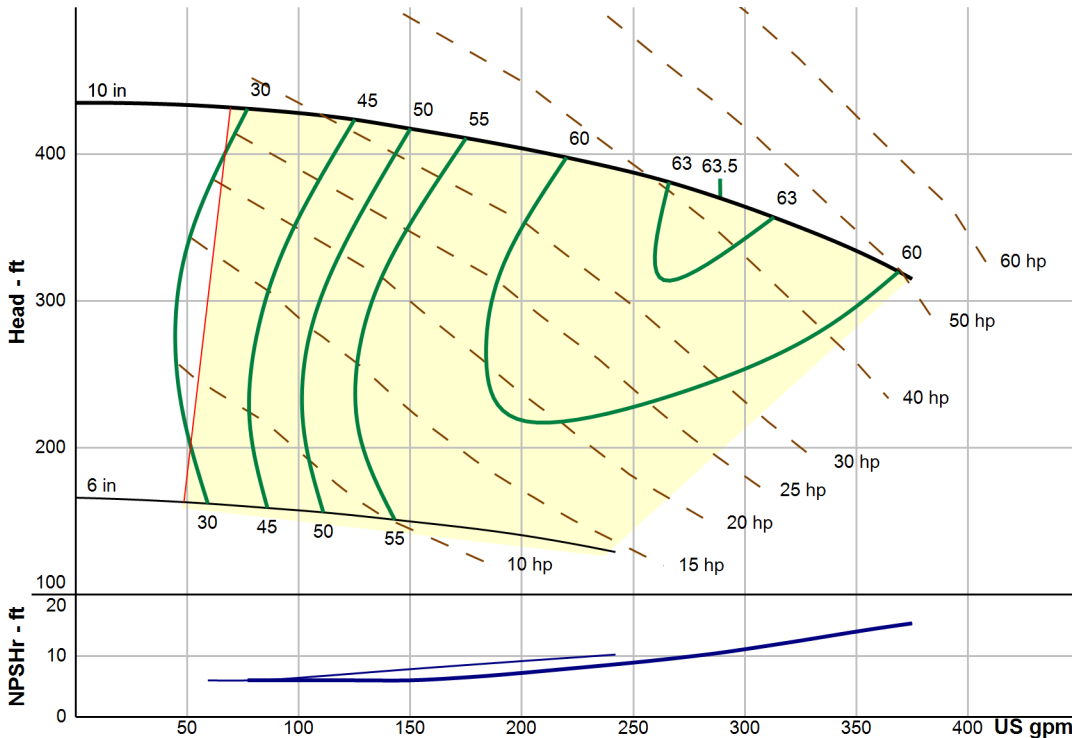
Motor:

Standard: NEMA Size: 60 hp
Enclosure: TEFC Speed: 3600 rpm
Frame: 364TS
Sizing Criteria: Max Power on Design Curve

Pump Selection Warnings:

None

--- Duty Point ---	
Flow:	289 US gpm
Head:	370 ft
Eff:	63.5%
Power:	42.5 hp
NPSHr:	10.5 ft
Speed:	3560 rpm
--- Design Curve ---	
Shutoff Head:	435 ft
Shutoff dP:	188 psi
Min Flow:	69.4 US gpm
BEP:	63.5% @ 289 US gpm
NOL Power:	50.6 hp @ 375 US gpm
--- Max Curve ---	
Max Power:	50.6 hp @ 375 US gpm



Performance Evaluation:

Flow	Speed	Head	Efficiency	Power	NPSHr
US gpm	rpm	ft	%	hp	ft
360	3560	326	60.5	48.9	14.5
300	3560	364	63.3	43.6	11.1
240	3560	390	61.3	38.5	8.58
180	3560	410	55.6	33.5	6.63
120	3560	424	43.4	29.5	6