

Company:
Name:
Date: 05/20/2024



Pump:		
Size:	2x3-10	<u>Dimensions:</u>
Type:	2196 ANSI	Suction: 3 in
Synch Speed:	3600 rpm	Discharge: 2 in
Dia:	10 in	
Curve:	---	
Impeller:	96M101G	

Fluid:		
Name:	Water	
SG:	1	Vapor Pressure: 0.256 psi a
Density:	62.4 lb/ft³	Atm Pressure: 14.7 psi a
Viscosity:	1.1 cP	
Temperature:	60 °F	Margin Ratio: 1

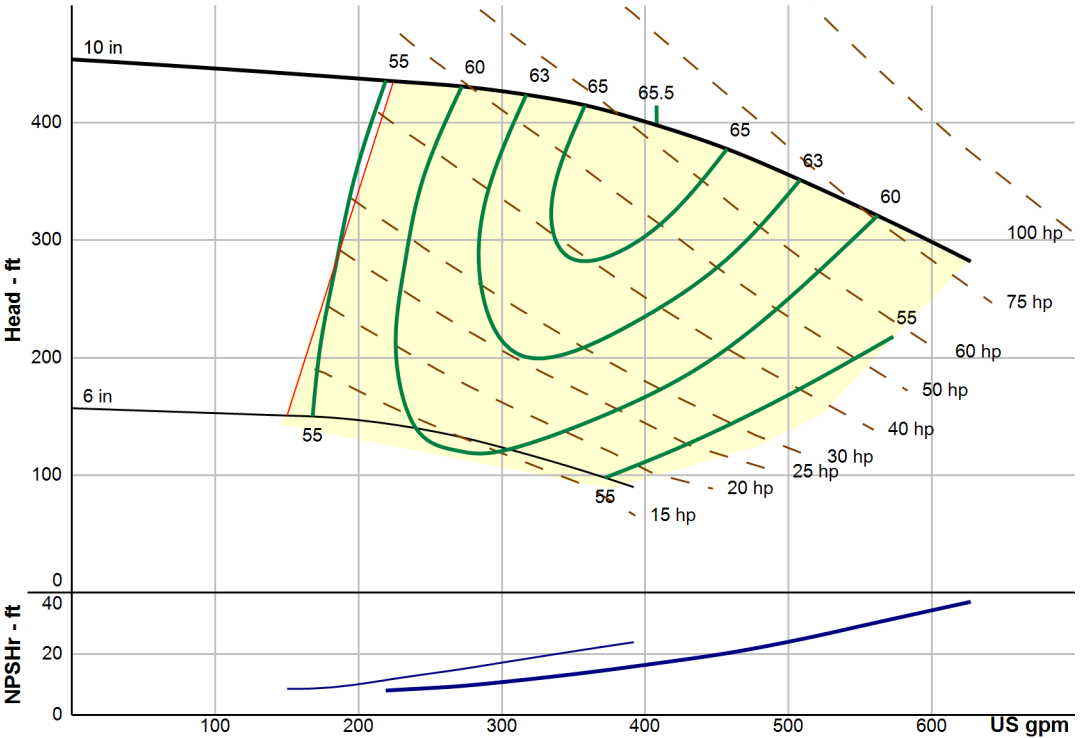
Search Criteria:		
Flow:	---	Near Miss: ---
Head:	---	Static Head: 0 ft

Pump Limits:		
Temperature:	---	Sphere Size: 0.37 in
Wkg Pressure:	---	

Motor:		
Standard:	NEMA	Size: 100 hp
Enclosure:	TEFC	Speed: 3600 rpm
Frame:	405TS	
Sizing Criteria:	Max Power on Design Curve	

Pump Selection Warnings:
None

--- Duty Point ---	
Flow:	408 US gpm
Head:	398 ft
Eff:	65.5%
Power:	62.6 hp
NPSHr:	16.9 ft
Speed:	3550 rpm
--- Design Curve ---	
Shutoff Head:	454 ft
Shutoff dP:	197 psi
Min Flow:	224 US gpm
BEP:	65.5% @ 408 US gpm
NOL Power:	79.7 hp @ 627 US gpm
--- Max Curve ---	
Max Power:	79.7 hp @ 627 US gpm



Performance Evaluation:					
Flow	Speed	Head	Efficiency	Power	NPSHr
US gpm	rpm	ft	%	hp	ft
602	3550	297	57.5	78.3	34.4
502	3550	355	63.2	71	24.2
402	3550	400	65.4	62	16.5
301	3550	426	61.9	52.3	10.9
201	3550	---	---	---	---