

Company:  
Name:  
Date: 05/20/2024



Pump:			
Size:	2x3-8	<u>Dimensions:</u>	
Type:	2196 ANSI	Suction:	3 in
Synch Speed:	1800 rpm	Discharge:	2 in
Dia:	8.375 in		
Curve:	---		
Impeller:	96M101B		

Fluid:			
Name:	Water		
SG:	1	Vapor Pressure:	0.256 psi a
Density:	62.4 lb/ft³	Atm Pressure:	14.7 psi a
Viscosity:	1.1 cP		
Temperature:	60 °F	Margin Ratio:	1

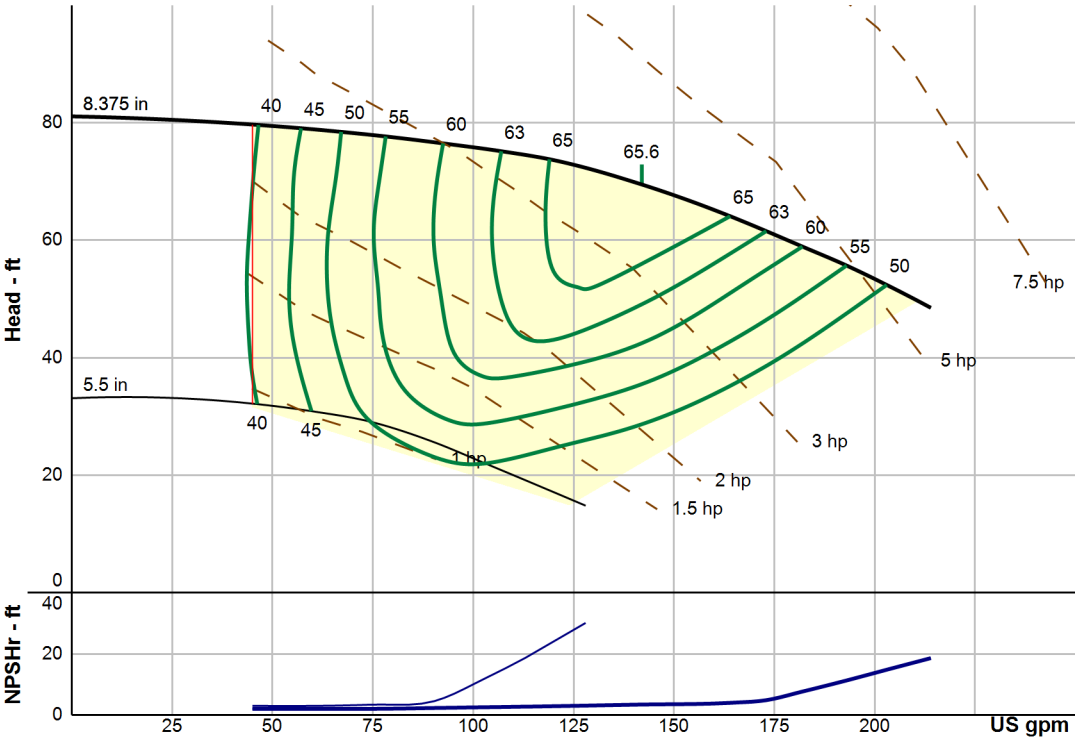
Search Criteria:			
Flow:	---	Near Miss:	---
Head:	---	Static Head:	0 ft

Pump Limits:			
Temperature:	---	Sphere Size:	0.5 in
Wkg Pressure:	---		

Motor:			
Standard:	NEMA	Size:	7.5 hp
Enclosure:	TEFC	Speed:	1800 rpm
Frame:	213T		
Sizing Criteria:	Max Power on Design Curve		

Pump Selection Warnings:	
None	

--- Duty Point ---	
Flow:	142 US gpm
Head:	69.5 ft
Eff:	65.6%
Power:	3.8 hp
NPSHr:	3.43 ft
Speed:	1750 rpm
--- Design Curve ---	
Shutoff Head:	81.1 ft
Shutoff dP:	35.1 psi
Min Flow:	45 US gpm
BEP:	65.6% @ 142 US gpm
NOL Power:	
	5.54 hp @ 214 US gpm
--- Max Curve ---	
Max Power:	
	5.54 hp @ 214 US gpm



Performance Evaluation:						
Flow	Speed	Head	Efficiency	Power	NPSHr	
US gpm	rpm	ft	%	hp	ft	
205	1750	51.7	49.5	5.4	15.5	
171	1750	62.1	63.4	4.23	4.67	
137	1750	70.4	65.5	3.72	3.31	
103	1750	75.5	62.2	3.16	2.55	
68.4	1750	78.4	50.6	2.67	2.01	