

Company:
Name:
Date: 05/20/2024



Pump:

Size: 2x3-8
Type: 2196 ANSI
Synch Speed: 3600 rpm
Dia: 8.375 in
Curve: ---
Impeller: 96M101B

Dimensions:
Suction: 3 in
Discharge: 2 in

Fluid:

Name: Water
SG: 1
Density: 62.4 lb/ft³
Viscosity: 1.1 cP
Temperature: 60 °F

Vapor Pressure: 0.256 psi a
Atm Pressure: 14.7 psi a
Margin Ratio: 1

Search Criteria:

Flow: ---
Head: ---

Near Miss: ---
Static Head: 0 ft

Pump Limits:

Temperature: ---
Wkg Pressure: ---

Sphere Size: 0.37 in

Motor:

Standard: NEMA
Enclosure: TEFC
Frame: 324TS
Sizing Criteria: Max Power on Design Curve

Size: 40 hp
Speed: 3600 rpm

Pump Selection Warnings:

None

--- Duty Point ---

Flow: 285 US gpm
Head: 281 ft
Eff: 69.5%
Power: 29.1 hp
NPSHr: 13.6 ft
Speed: 3550 rpm

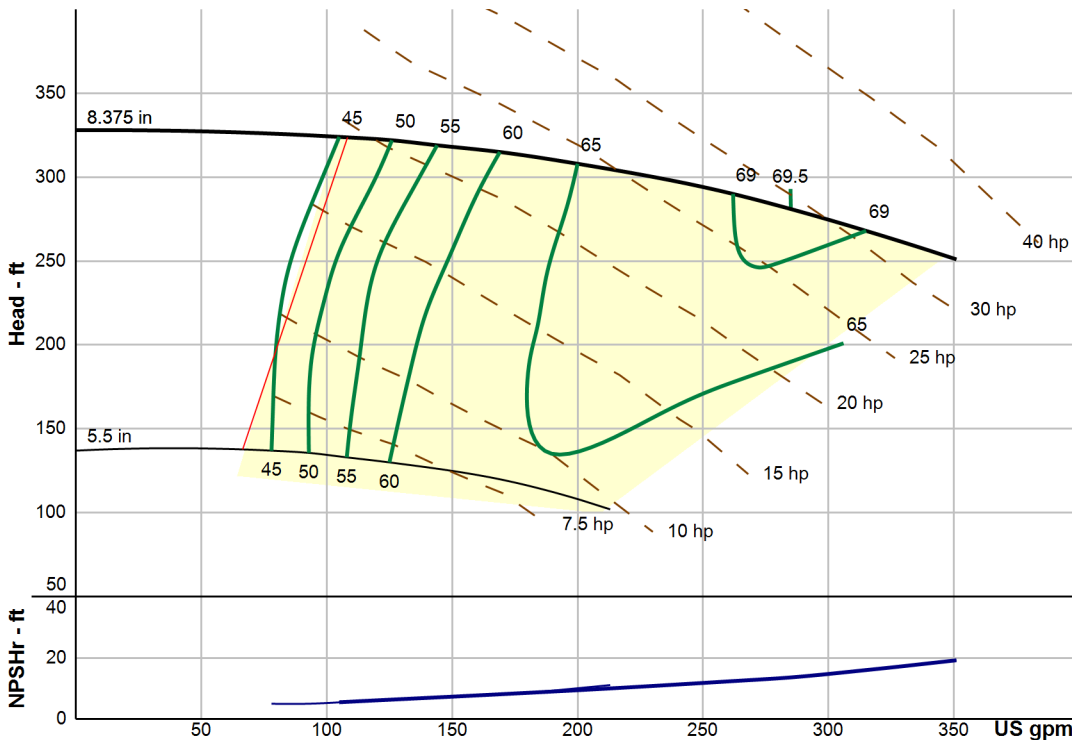
--- Design Curve ---

Shutoff Head: 328 ft
Shutoff dP: 142 psi

Min Flow: 108 US gpm
BEP: 69.5% @ 285 US gpm
NOL Power:
34 hp @ 351 US gpm

--- Max Curve ---

Max Power:
34 hp @ 351 US gpm



Performance Evaluation:

Flow US gpm	Speed rpm	Head ft	Efficiency %	Power hp	NPSHr ft
337	3550	258	66.8	32.8	18
281	3550	283	69.4	28.9	13.4
225	3550	301	66.6	25.5	10.6
169	3550	315	60	22.4	8.1
112	3550	323	46.7	19.6	5.78