

Pump Data Sheet -

Company:
Name:
Date: 06/19/2024



Pump:

Size: 1.5x2-6J
Type: CC1 Cast Iron
Synch Speed: 3600 rpm
Dia: 6 in
Curve: ---
Impeller: CC-IMPELLER-10

Dimensions:
Suction: 2 in
Discharge: 1.5 in

Fluid:

Name: Water
SG: 1
Density: 62.4 lb/ft³
Viscosity: 1.1 cP
Temperature: 60 °F

Vapor Pressure: 0.256 psi a
Atm Pressure: 14.7 psi a
Margin Ratio: 1

Search Criteria:

Flow: --- Near Miss: ---
Head: --- Static Head: 0 ft

Pump Limits:

Temperature: --- Sphere Size: 0.38 in
Wkg Pressure: ---

Motor:

Standard: NEMA Size: 7.5 hp
Enclosure: TEFC Speed: 3600 rpm
Frame: 213T
Sizing Criteria: Max Power on Design Curve

Pump Selection Warnings:

None

--- Duty Point ---

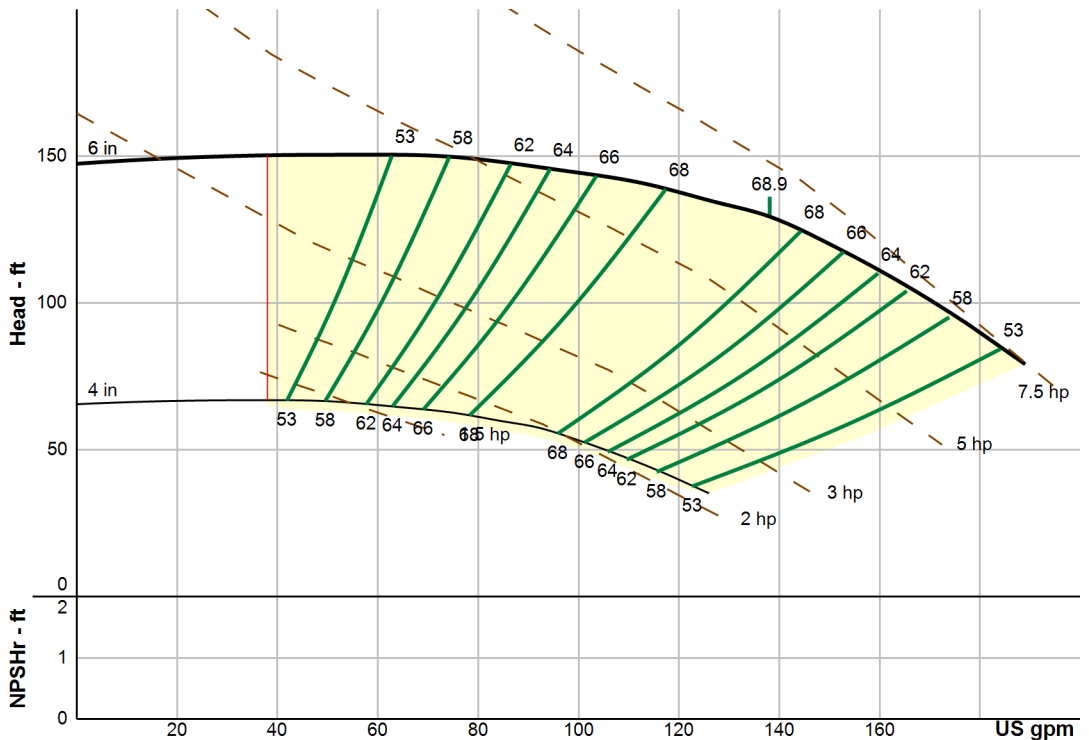
Flow: 138 US gpm
Head: 129 ft
Eff: 68.9%
Power: 6.56 hp
NPSHr: ---
Speed: 3600 rpm

--- Design Curve ---

Shutoff Head: 147 ft
Shutoff dP: 63.9 psi
Min Flow: 38 US gpm
BEP: 68.9% @ 138 US gpm
NOL Power:
7.47 hp @ 189 US gpm

--- Max Curve ---

Max Power:
7.47 hp @ 189 US gpm



NPT Connections. Motor frame size range: 143-215JM

Performance Evaluation:

Flow US gpm	Speed rpm	Head ft	Efficiency %	Power hp	NPSHr ft
181	3600	87.6	54	7.34	---
151	3600	119	66.5	6.84	---
121	3600	137	68.2	6.14	---
90.6	3600	146	62.8	5.32	---
60.4	3600	150	51.3	4.43	---