

Pump Data Sheet -

Company:
Name:
Date: 06/24/2024



Pump:

Size: 1x2-8A
Type: CC1 Cast Iron
Synch Speed: 3600 rpm
Dia: 8 in
Curve: ---
Impeller: CC-IMPELLER-15

Dimensions:
Suction: 2 in
Discharge: 1 in

Fluid:

Name: Water
SG: 1
Density: 62.4 lb/ft³
Viscosity: 1.1 cP
Temperature: 60 °F

Vapor Pressure: 0.256 psi a
Atm Pressure: 14.7 psi a
Margin Ratio: 1

Search Criteria:

Flow: ---
Head: ---
Near Miss: ---
Static Head: 0 ft

Pump Limits:

Temperature: ---
Wkg Pressure: ---
Sphere Size: 0.31 in

Motor:

Standard: NEMA
Enclosure: TEFC
Frame: 256T
Sizing Criteria: Max Power on Design Curve

Size: 20 hp
Speed: 3600 rpm

Pump Selection Warnings:

None

--- Duty Point ---

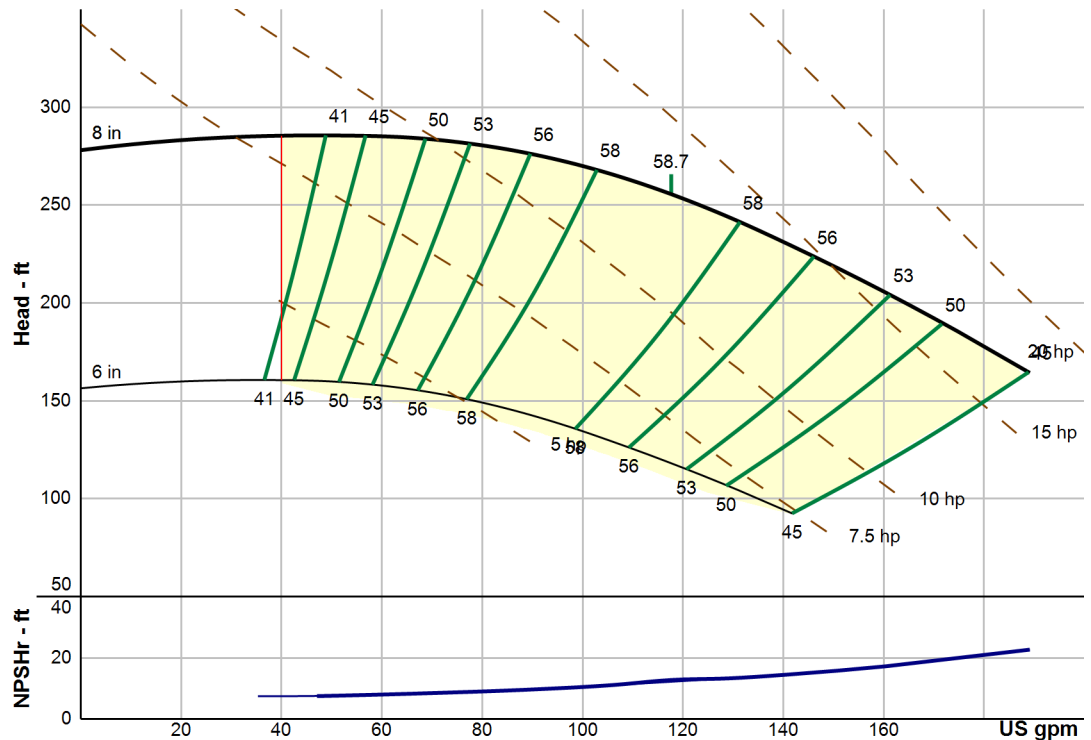
Flow: 118 US gpm
Head: 256 ft
Eff: 58.7%
Power: 13 hp
NPSHr: 12.8 ft
Speed: 3600 rpm

--- Design Curve ---

Shutoff Head: 278 ft
Shutoff dP: 120 psi
Min Flow: 40 US gpm
BEP: 58.7% @ 118 US gpm
NOL Power: 17.5 hp @ 189 US gpm

--- Max Curve ---

Max Power: 17.5 hp @ 189 US gpm



NPT Connections. Motor frame size range: 143-215JM

Performance Evaluation:

Flow US gpm	Speed rpm	Head ft	Efficiency %	Power hp	NPSHr ft
181	3600	175	46.9	17	21.3
151	3600	216	54.4	15	16.2
121	3600	252	58.5	13.2	12.9
90.6	3600	275	56.1	11.2	9.75
60.4	3600	284	46.1	9.32	8.07