

Pump Data Sheet -

Company:
Name:
Date: 06/19/2024



Pump:

Size: 2x2.5-6
Type: CC1 Cast Iron
Synch Speed: 3600 rpm
Dia: 6 in
Curve: ---
Impeller: CC-IMPELLER-12

Dimensions:
Suction: 2.5 in
Discharge: 2 in

Fluid:

Name: Water
SG: 1
Density: 62.4 lb/ft³
Viscosity: 1.1 cP
Temperature: 60 °F

Vapor Pressure: 0.256 psi a
Atm Pressure: 14.7 psi a
Margin Ratio: 1

Search Criteria:

Flow: --- Near Miss: ---
Head: --- Static Head: 0 ft

Pump Limits:

Temperature: --- Sphere Size: 0.38 in
Wkg Pressure: ---

Motor:

Standard: NEMA Size: 20 hp
Enclosure: TEFC Speed: 3600 rpm
Frame: 256T
Sizing Criteria: Max Power on Design Curve

Pump Selection Warnings:

None

--- Duty Point ---

Flow: 260 US gpm
Head: 137 ft
Eff: 76.7%
Power: 11.8 hp
NPSHr: ---
Speed: 3600 rpm

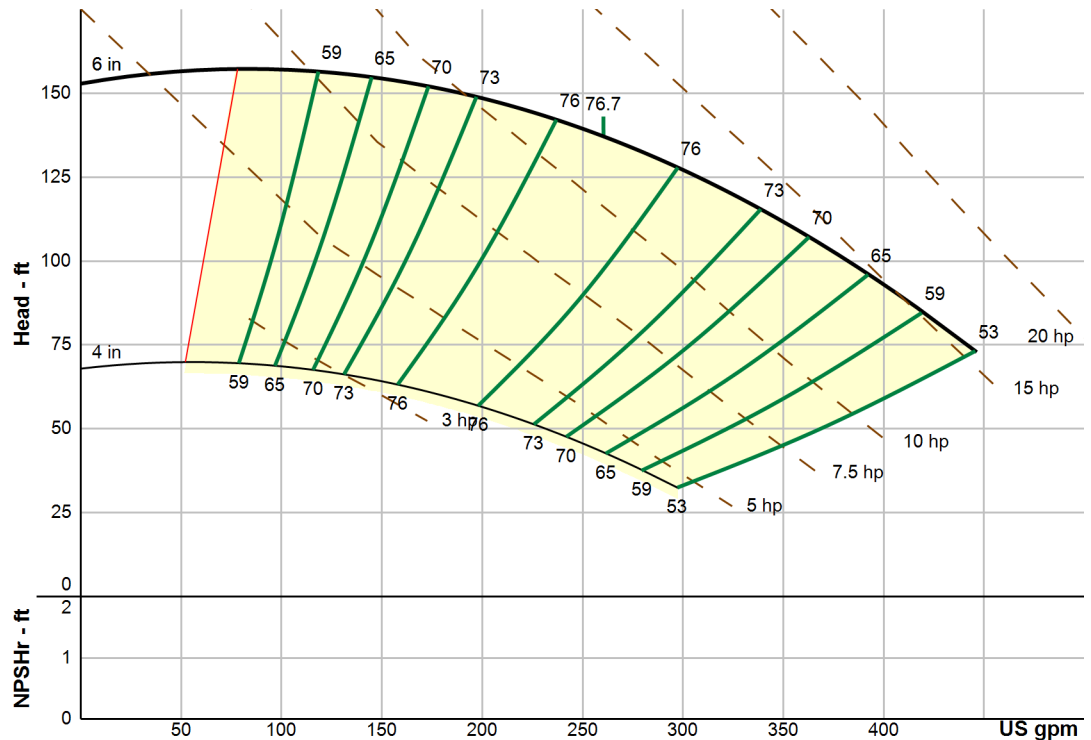
--- Design Curve ---

Shutoff Head: 153 ft
Shutoff dP: 66.2 psi

Min Flow: 78.1 US gpm
BEP: 76.7% @ 260 US gpm
NOL Power:
15.5 hp @ 446 US gpm

--- Max Curve ---

Max Power:
15.5 hp @ 446 US gpm



NPT Connections. Motor frame size range: 143-215JM

Performance Evaluation:

Flow US gpm	Speed rpm	Head ft	Efficiency %	Power hp	NPSHr ft
428	3600	80.2	56.4	15.2	---
357	3600	109	70.2	13.9	---
286	3600	131	76.3	12.4	---
214	3600	146	74.5	10.6	---
143	3600	154	63.9	8.63	---