

Pump Data Sheet -

Company:
Name:
Date: 06/03/2024



Pump:

Size: 1x2-6
Type: CC1 Cast Iron
Synch Speed: 3600 rpm
Dia: 5.375 in
Curve: ---
Impeller: CC-IMPELLER-10

Dimensions:

Suction: 2 in
Discharge: 1 in

Fluid:

Name: Water
SG: 1
Density: 62.4 lb/ft³
Viscosity: 1.1 cP
Temperature: 60 °F
Vapor Pressure: 0.256 psi a
Atm Pressure: 14.7 psi a
Margin Ratio: 1

Pump Limits:

Temperature: ---
Wkg Pressure: ---
Sphere Size: 0.38 in

Motor:

Standard: NEMA
Enclosure: TEFC
Frame: 184T
Sizing Criteria: Max Power on Design Curve
Size: 5 hp
Speed: 3600 rpm

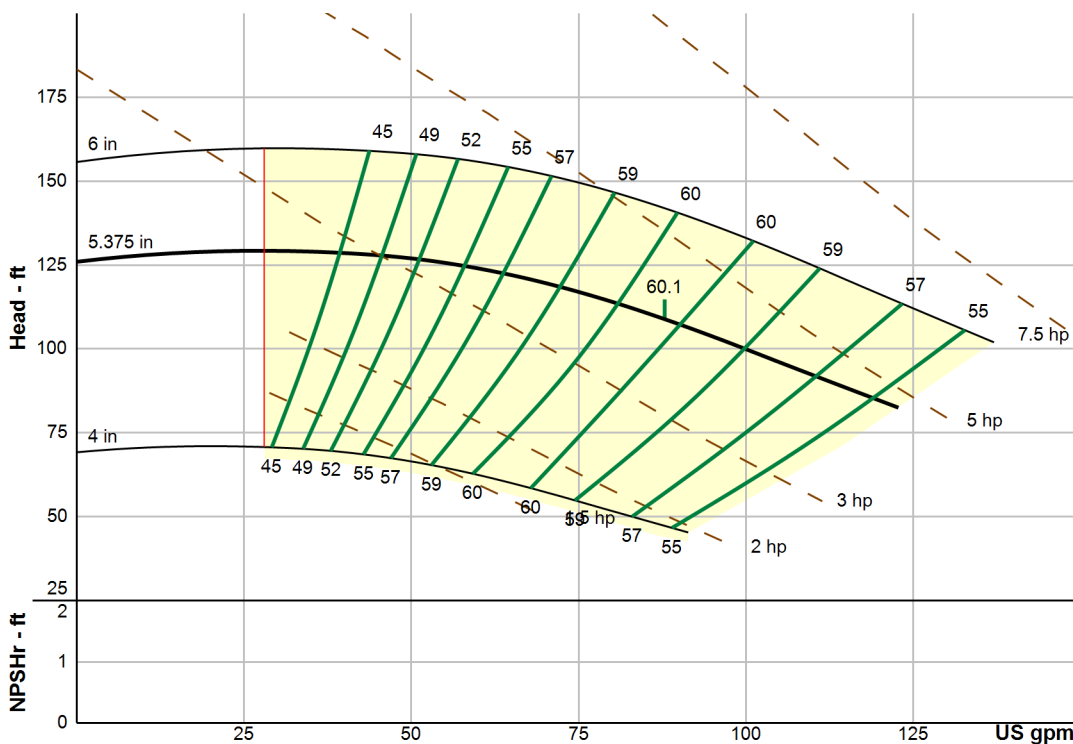
Search Criteria:

Flow: ---
Head: ---
Near Miss: ---
Static Head: 0 ft

Pump Selection Warnings:

None

--- Duty Point ---	
Flow:	87.9 US gpm
Head:	109 ft
Eff:	60.1%
Power:	4.02 hp
NPSHr:	---
Speed:	3600 rpm
--- Design Curve ---	
Shutoff Head:	126 ft
Shutoff dP:	54.6 psi
Min Flow:	28 US gpm
BEP: 60.1% @ 87.9 US gpm	
NOL Power:	4.74 hp @ 123 US gpm
--- Max Curve ---	
Max Power:	6.53 hp @ 137 US gpm



NPT Connections. Motor frame size range: 143-215JM

Performance Evaluation:

Flow US gpm	Speed rpm	Head ft	Efficiency %	Power hp	NPSHr ft
118	3600	86.1	55.2	4.65	---
98.2	3600	101	59.2	4.24	---
78.6	3600	115	59.8	3.81	---
58.9	3600	124	55.3	3.34	---
39.3	3600	129	45	2.84	---