



Customer information packet

ECS100T4H10FC4

10HP, 1800RPM, 3PH, 60HZ, 215TC, 3740B, TEFC, F

Class - None

Division - Not Applicable

Specifications

Enclosure	TEFC
Frame	215TC
Frame Material	Steel
Frequency	60.00 Hz
Haz Area Class and Group	None
Haz Area Division	Not Applicable
Motor Letter Type	Three Phase
Output @ Frequency	10.000 HP @ 60 HZ
Phase	3
Synchronous Speed @ Frequency	1800 RPM @ 60 HZ
Voltage @ Frequency	460.0 V @ 60 HZ
Agency Approvals	UL WEEE
Ambient Temperature	40 °C
Auxillary Box	No Auxillary Box
Auxillary Box Lead Termination	None
Base Indicator	No Mounting
Bearing Grease Type	Polyrex EM (-20F +300F)
Blower	None
Constant Torque Speed Range	6
Current @ Voltage	11.000 A @ 460.0 V
Drip Cover	No Drip Cover
Duty Rating	CONT
Efficiency @ 100% Load	94.8 %
Electrically Isolated Bearing	Not Electrically Isolated
Feedback Device	NO FEEDBACK
Heater Indicator	No Heater
High Voltage Full Load Amps	11.0 a
Insulation Class	F
Inverter Code	Inverter Duty
IP Rating	NONE
Lifting Lugs	Standard Lifting Lugs

Part detail

Revision	F
Type	AC
Mech. spec.	
Base	
Status	PRD/A
Elec. spec.	37WGA0021
Layout	37LYQ489
Eff. date	07-12-2024
CD Diagram	CD0006B03
Poles	04
Leads	3#12 19" LONG LEADS
Proprietary	False
Created date	09-28-2020

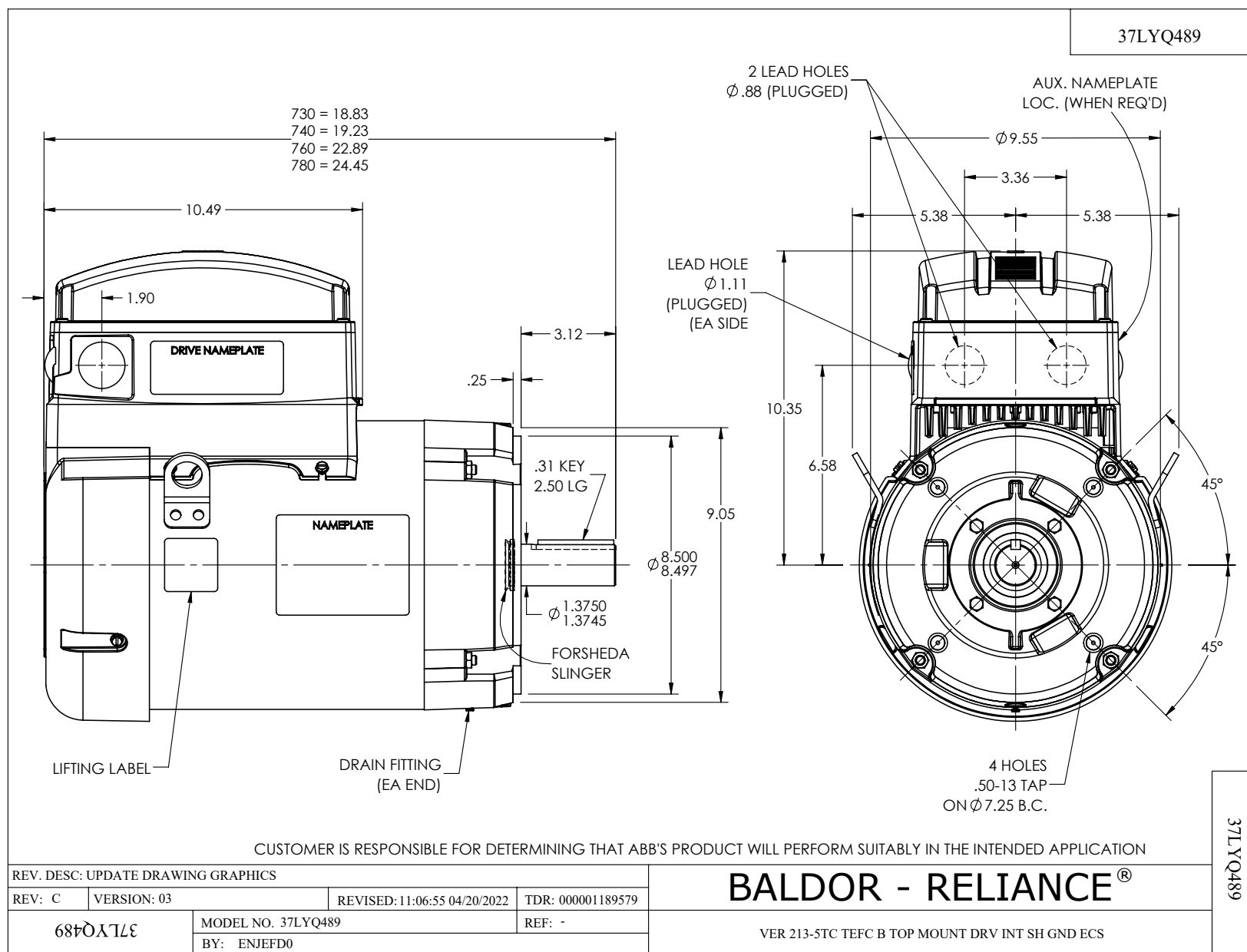
Locked Bearing Indicator	Locked Bearing
Motor Lead Termination	Flying Leads
Motor Standards	NEMA
Motor Type	3740B
Mounting Arrangement	F1
Number of Poles	4
Overall Length	19.23 IN
Power Factor	94
Product Family	General Purpose
Pulley Face Code	C-Face
Rodent Screen	None
Service Factor	1.00
Shaft Diameter	1.375 IN
Shaft Ground Indicator	Shaft Grounding
Shaft Rotation	Reversible
Speed	1800 rpm
Speed Code	Single Speed
Starting Method	Direct on line
Thermal Device - Bearing	None
Thermal Device - Winding	None
Vibration Sensor Indicator	No Vibration Sensor
Winding Thermal 1	None
Winding Thermal 2	None

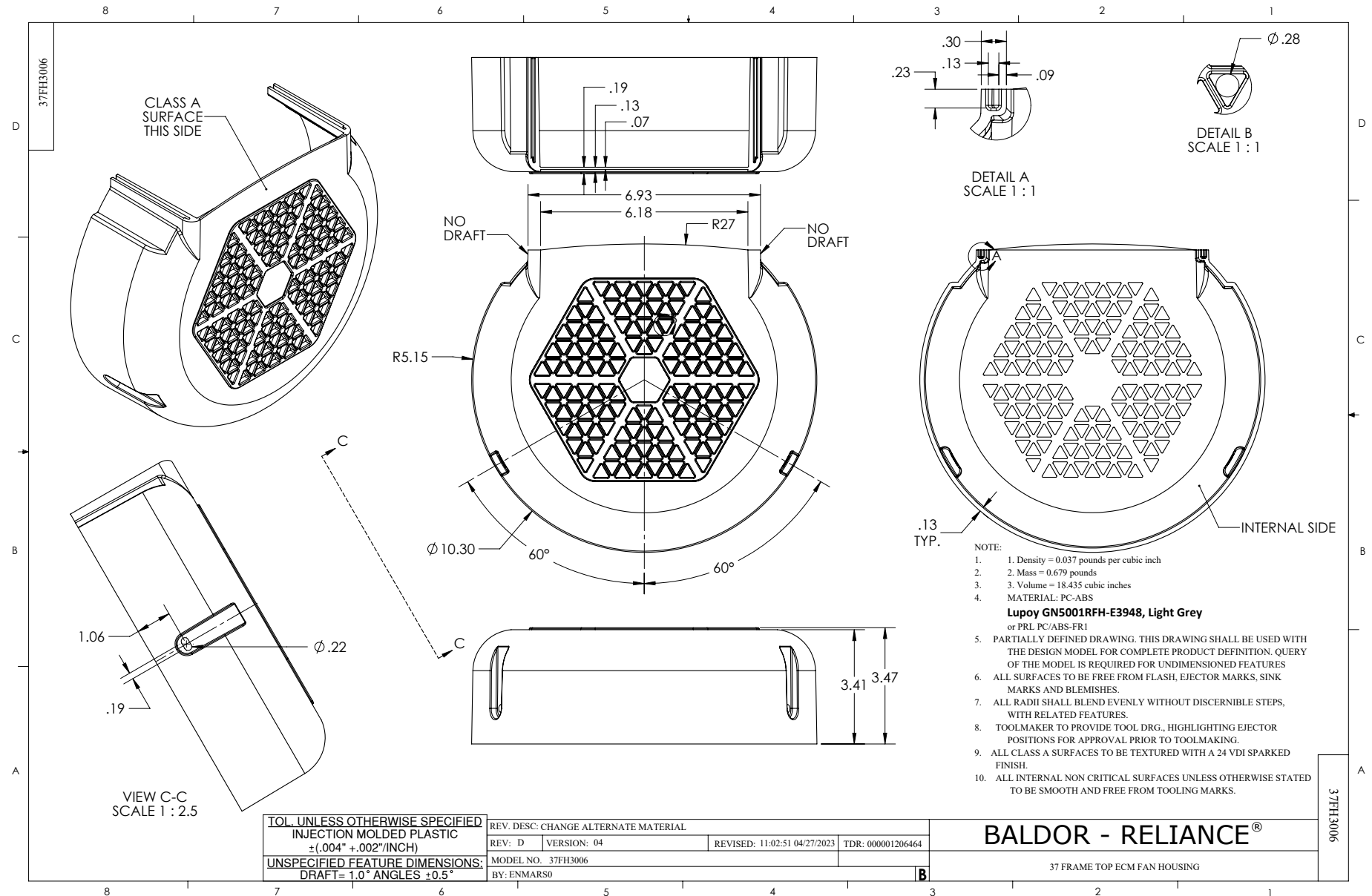
Nameplate

NP3978A01						
PART NO.	ECI4A12P0					
U1	480	PH	3	HZ	60	
I1	10.1	W/EXT. CHOKE				9.0
SERIAL #						

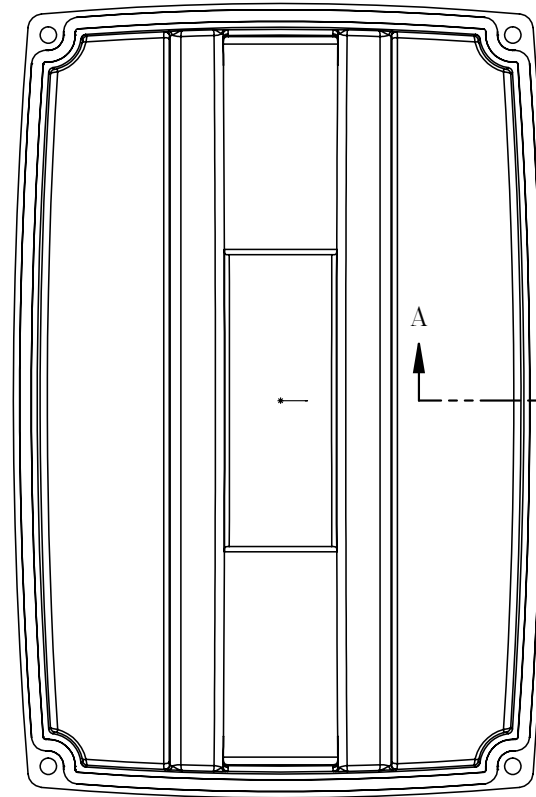
NP3968A01A01

CAT.NO.	ECS100T4H10FC4											
SPEC.	37-0001718											
FRAME	215TC			ENCL.		TEFC		IP		54		
HP	10		40		C AMB			CONT				
NOM. EFF.	94.8		PF		94		SF		1			
VOLTS	460			FLA		11.22						
RPM	1800			RPM-MAX			3000					
HZ	60		PH.		3		CLASS		F			
BEMF (V)	231.36			RS (OHMS)				0.93				
LD (MH)	23.214				LQ (MH)			75.933				
VPWM	CHP		60		TO		120					
CT	6		TO		60		VT		1		TO	120
MATCHED INV	ECI4A12P0											
DE	6307			ODE			6206					
SERIAL #												

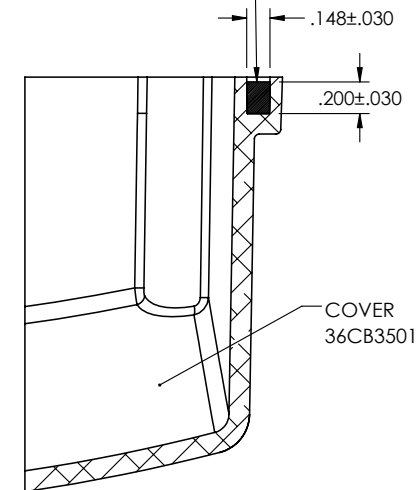




36CB3501A00



MATERIAL: RAMPF, RAKU-PUR 32-3280-51L



SECTION A-A

REV. DESC: UPDATE MATERIAL

REV: A

VERSION: 01

REVISED: 10:46:37 03/29/2019

TDR: 000001101646



MODEL NO. 36CB3501A00

REF: -

BY: ENMARS0

Material: -

BALDOR - RELIANCE®

36 & 37 FRAME TOP ECM COVER WITH FOAM SEAL

36CB3501A00

