

Qty. Description

1 **BM 3A-18 NBR**



Note! Product picture may differ from actual product

Product No.: [10783618](#)

BM is an encapsulated submersible pump that is suitable for applications where a high pressure is required. Therefore, BM is ideal for water treatment, liquid transfer, pressure boosting and closed circulation systems with a high static pressure.

BM pumps are available in four different versions (standard, N-version, NE-version, and R-version), in various sizes, and with a large variety in the number of impellers.

The range covers BM 3A to BM 215, a total of twelve sizes.

Depending on its size and frequency, a BM pump can reach a flow rate of 265 or 310 m³/h.

BM pumps can increase the system pressure up to 82.7 bar.

The pump is supplied with an asynchronous motor, Victaulic connections, a straight or 90° bent pipe for BM 3A, BM 5A and BM 9 pumps and a straight pipe for BM 18 and above.

The motor is protected by output filters against overvoltage and increased operating temperature.

As a result, BM is very reliable and durable.

The compact design ensures easy maintenance and alignment of the pump.

The stainless-steel pump and motor housing ensure an excellent resistance against different types of liquids. The R-version is designed to be highly efficient against corrosive liquids.

Three different types of asynchronous motors are available for BM pumps: MS 4000, MS 6000 and MMS 8000.

The enclosure class is IP68.

The motor power ranges from 0.75 to 92 kW.

The motor is controlled by a frequency converter and protected by Pt100 sensors.

The frequency converter is sold as a separate accessory and must be purchased along with the pump.

We recommend a Grundfos CUE frequency converter; however, frequency converters from alternative suppliers can be used as well.

Liquid:

Pumped liquid: Water
Maximum liquid temperature: 104 °F
Selected liquid temperature: 68 °F
Density: 62.29 lb/ft³

Technical:

Rated flow: 17.6 US GPM
Rated head: 178.9 psi
Curve tolerance: ISO9906:2012 3B

Materials:

Pump: Stainless steel
DIN W.-Nr. 1.4301
AISI 304
Impeller: Stainless steel
EN 1.4301
AISI 304



Company name:

Created by:

Phone:

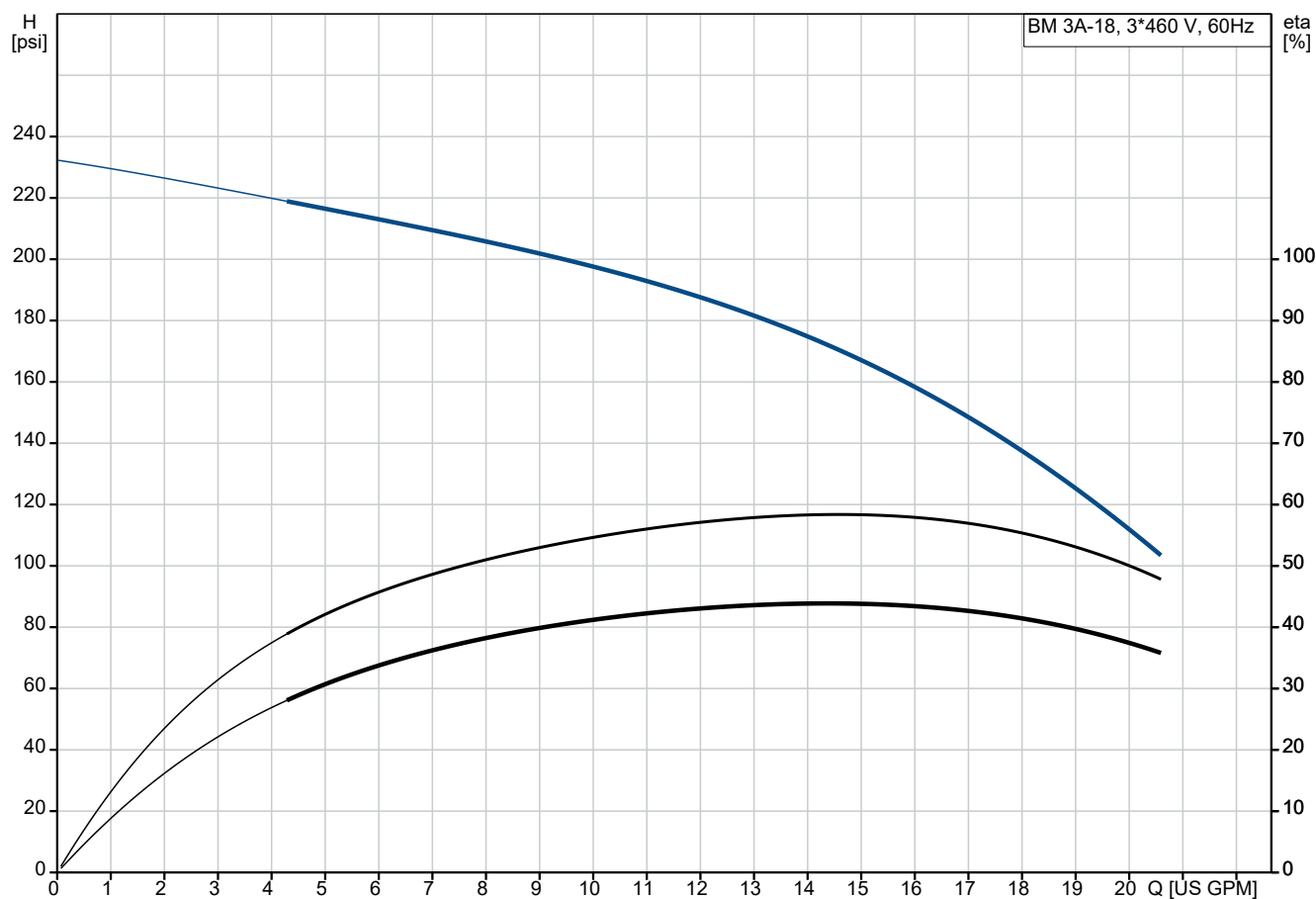
Date:

22/01/2025

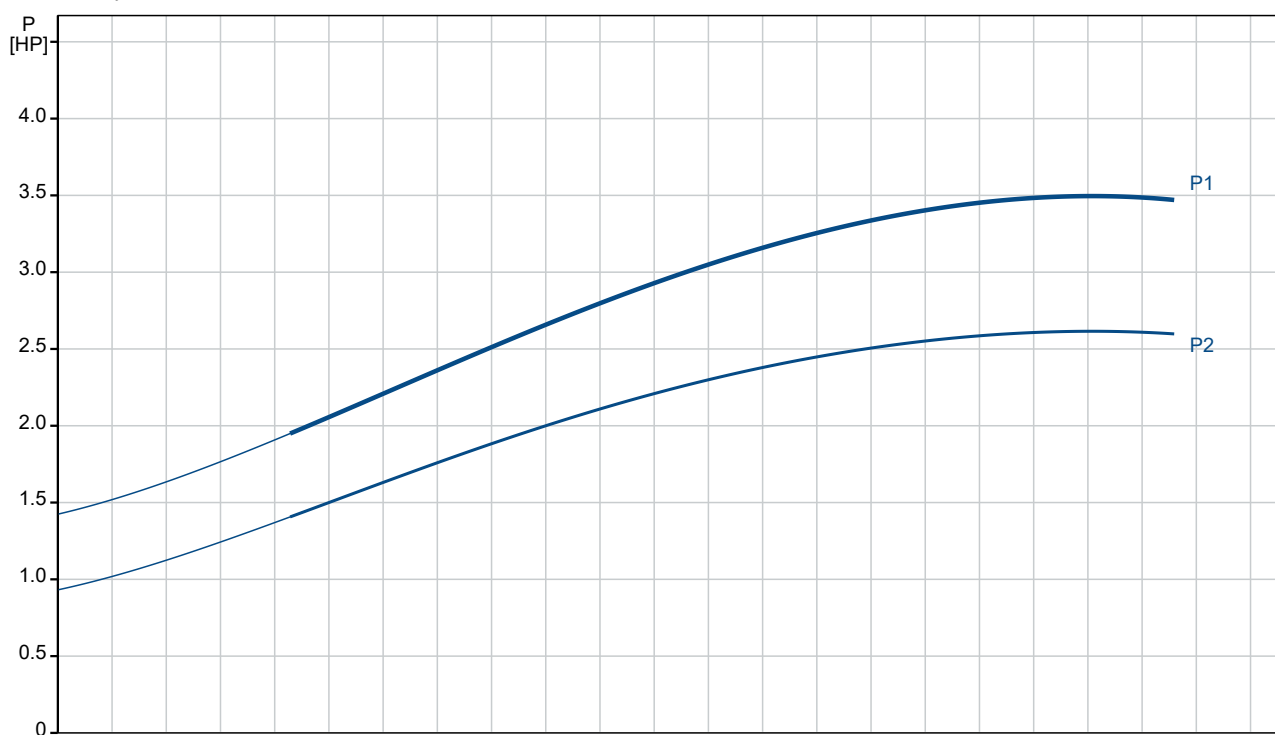
Qty.	Description
------	-------------

1	<div>Motor: Stainless steel EN 1.4539 AISI 904L</div> <div>Sleeve: Stainless steel AISI 304 EN 1.4301</div> <div>Installation: Maximum operating pressure: 1199.46 psi Maximum permissible inlet pressure: 725.19 psi Maximum outlet pressure: 1189.31 psi Pipe connection standard: PJE Pipe connection: 42 mm</div> <div>Electrical data: Rated power - P2: 2 HP Mains frequency: 60 Hz Rated voltage: 3 x 440-460-480 V Service factor: 1.25 Rated current: 3.5-3.6-3.8 A Starting current: 490-500-500 % Cos phi - power factor: 0.8-0.75-0.7 Rated speed: 3460-3480-3490 rpm Method of start: Direct-on-line (DOL) Enclosure class (IEC 34-5): IP66 Thermal protection: External Built-in temp. transmitter: Yes Motor No: 7C193706</div> <div>Others: Minimum efficiency index, MEI ≥: 0.70 Net weight: 79.4 lb Gross weight: 148 lb Shipping volume: 3.53 ft³ Country of origin: DK Custom tariff no.: 8413.70.2004</div>
---	--

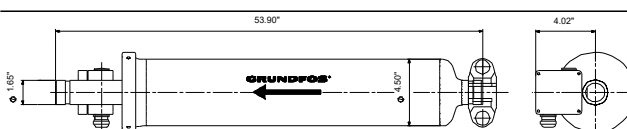
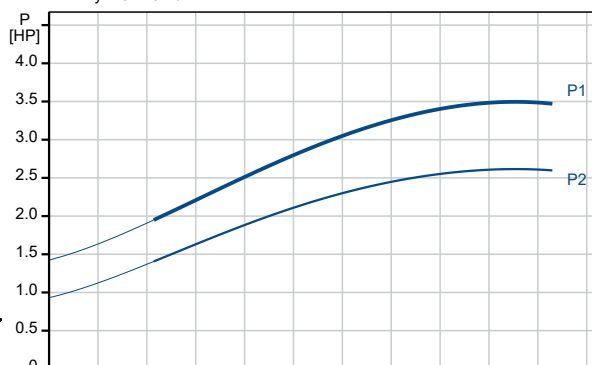
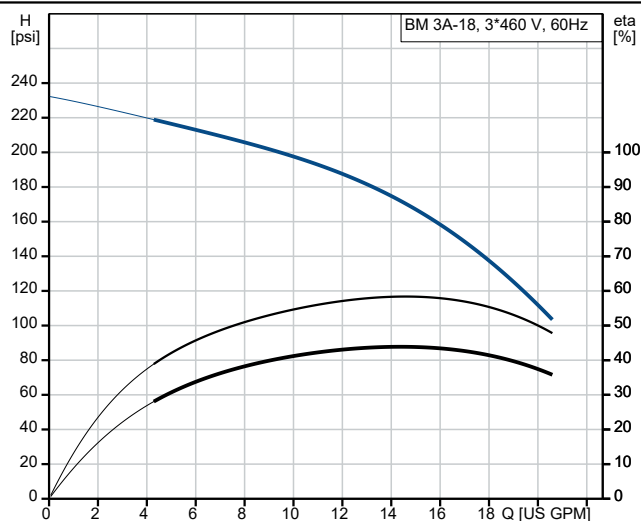
10783618 BM 3A-18 NBR 60 Hz



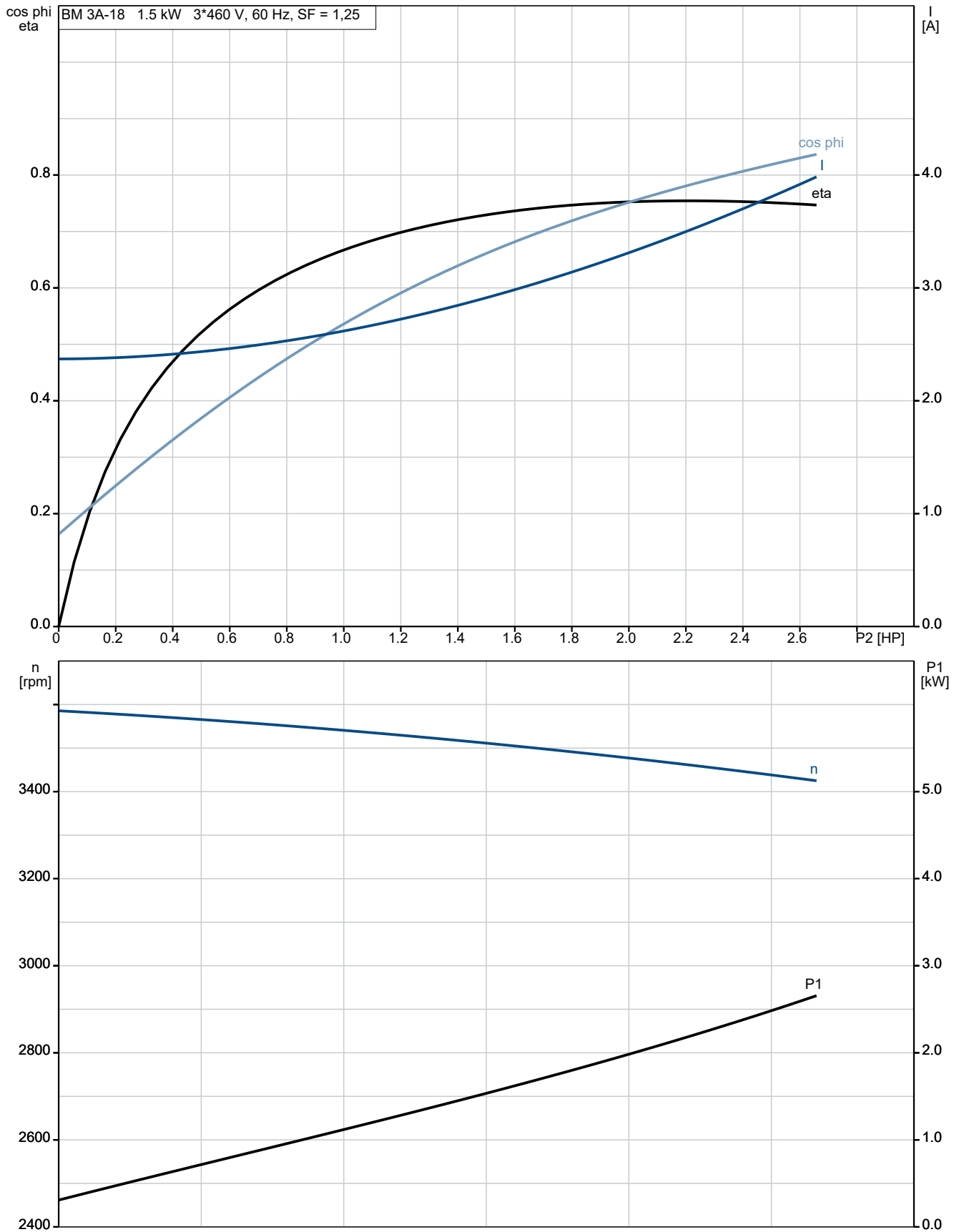
Pumped liquid = Water
 Liquid temperature during operation = 68 °F
 Density = 62.29 lb/ft³



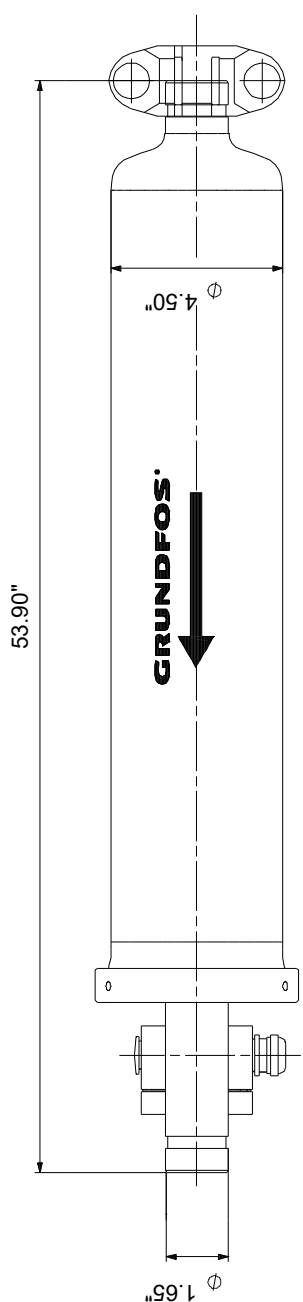
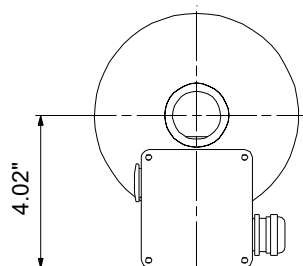
Description	Value
General information:	
Product name:	BM 3A-18 NBR
Product No:	10783618
EAN number:	5711492336281
Technical:	
Rated flow:	17.6 US GPM
Rated head:	178.9 psi
Stages:	18
Curve tolerance:	ISO9906:2012 3B
Model:	D
Materials:	
Pump:	Stainless steel
Pump:	DIN W.-Nr. 1.4301
Pump:	AISI 304
Impeller:	Stainless steel
Impeller:	EN 1.4301
Impeller:	AISI 304
Motor:	Stainless steel
Motor:	EN 1.4539
Motor:	AISI 904L
Code for rubber:	NBR
Sleeve:	Stainless steel
Sleeve:	AISI 304
Sleeve:	EN 1.4301
Installation:	
Maximum operating pressure:	1199.46 psi
Maximum permissible inlet pressure:	725.19 psi
Maximum outlet pressure:	1189.31 psi
Pipe connection standard:	PJE
Pipe connection:	S
Pipe connection:	42 mm
Liquid:	
Pumped liquid:	Water
Maximum liquid temperature:	104 °F
Selected liquid temperature:	68 °F
Density:	62.29 lb/ft³
Electrical data:	
Rated power - P2:	2 HP
Mains frequency:	60 Hz
Rated voltage:	3 x 440-460-480 V
Service factor:	1.25
Rated current:	3.5-3.6-3.8 A
Starting current:	490-500-500 %
Cos phi - power factor:	0.8-0.75-0.7
Rated speed:	3460-3480-3490 rpm
Method of start:	Direct-on-line (DOL)
Enclosure class (IEC 34-5):	IP66
Thermal protection:	External
Built-in temp. transmitter:	Yes
Motor No:	7C193706
Others:	
Minimum efficiency index, MEI ≥:	0.70
Net weight:	79.4 lb
Gross weight:	148 lb
Shipping volume:	3.53 ft³
Country of origin:	DK
Custom tariff no.:	8413.70.2004



10783618 BM 3A-18 NBR 60 Hz



10783618 BM 3A-18 NBR 60 Hz



Note! All units are in [in] unless others are stated.

Disclaimer: This simplified dimensional drawing does not show all details.