

| Qty. | Description |
|------|-------------|
|------|-------------|

| | |
|---|-------------|
| 1 | BM 5A-7 NBR |
|---|-------------|



Note! Product picture may differ from actual product

Product No.: [5783607](#)

BM is an encapsulated submersible pump that is suitable for applications where a high pressure is required. Therefore, BM is ideal for water treatment, liquid transfer, pressure boosting and closed circulation systems with a high static pressure.

BM pumps are available in four different versions (standard, N-version, NE-version, and R-version), in various sizes, and with a large variety in the number of impellers.

The range covers BM 3A to BM 215, a total of twelve sizes.

Depending on its size and frequency, a BM pump can reach a flow rate of 265 or 310 m3/h.

BM pumps can increase the system pressure up to 82.7 bar.

The pump is supplied with an asynchronous motor, Victaulic connections, a straight or 90° bent pipe for BM 3A, BM 5A and BM 9 pumps and a straight pipe for BM 18 and above.

The motor is protected by output filters against overvoltage and increased operating temperature.

As a result, BM is very reliable and durable.

The compact design ensures easy maintenance and alignment of the pump.

The stainless-steel pump and motor housing ensure an excellent resistance against different types of liquids. The R-version is designed to be highly efficient against corrosive liquids.

Three different types of asynchronous motors are available for BM pumps: MS 4000, MS 6000 and MMS 8000.

The enclosure class is IP68.

The motor power ranges from 0.75 to 92 kW.

The motor is controlled by a frequency converter and protected by Pt100 sensors.

The frequency converter is sold as a separate accessory and must be purchased along with the pump.

We recommend a Grundfos CUE frequency converter; however, frequency converters from alternative suppliers can be used as well.

Liquid:

| | |
|------------------------------|--------------------------|
| Pumped liquid: | Water |
| Maximum liquid temperature: | 104 °F |
| Selected liquid temperature: | 68 °F |
| Density: | 62.29 lb/ft ³ |

Technical:

| | |
|------------------|-----------------|
| Rated flow: | 26.4 US GPM |
| Rated head: | 65.31 psi |
| Curve tolerance: | ISO9906:2012 3B |

Materials:

| | |
|-----------|-------------------|
| Pump: | Stainless steel |
| | DIN W.-Nr. 1.4301 |
| | AISI 304 |
| Impeller: | Stainless steel |
| | EN 1.4301 |
| | AISI 304 |



Company name:

Created by:

Phone:

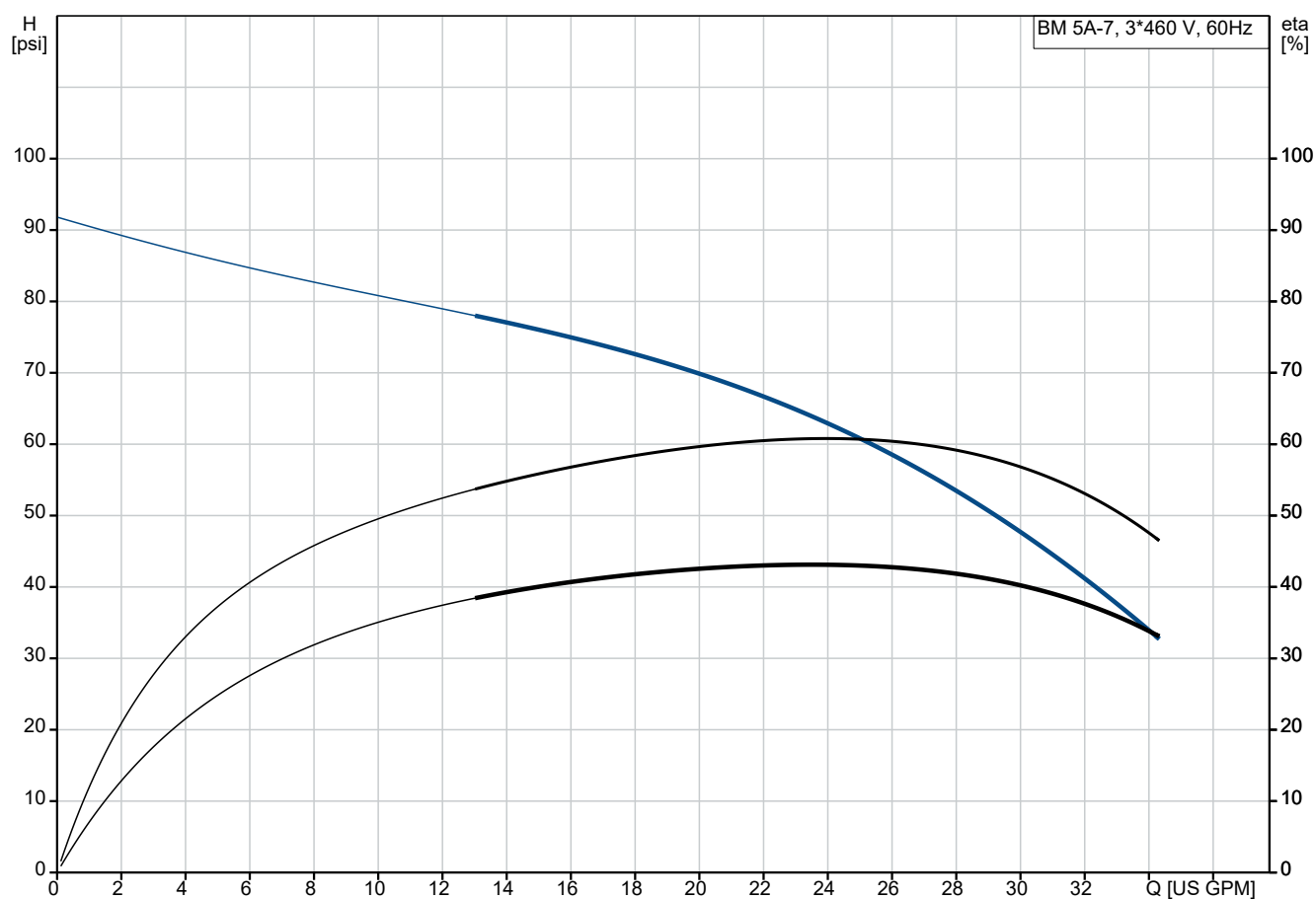
Date:

23/01/2025

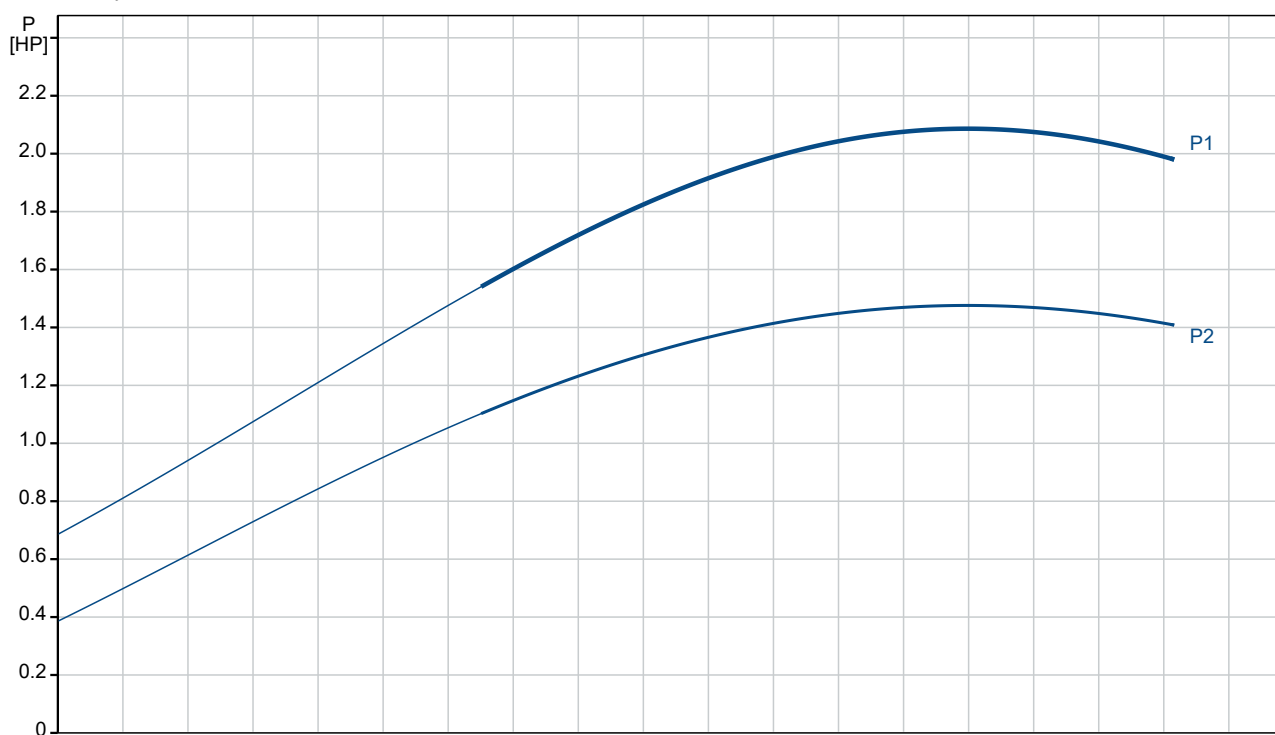
| Qty. | Description |
|------|-------------|
|------|-------------|

| | |
|---|---|
| 1 | <div>Motor: Stainless steel EN 1.4539 AISI 904L</div> <div>Sleeve: Stainless steel AISI 304 EN 1.4301</div> <div>Installation: Maximum operating pressure: 1199.46 psi Maximum permissible inlet pressure: 725.19 psi Maximum outlet pressure: 1189.31 psi Pipe connection standard: PJE Pipe connection: 42 mm</div> <div>Electrical data: Rated power - P2: 1 HP Mains frequency: 60 Hz Rated voltage: 3 x 440-460-480 V Service factor: 1.40 Rated current: 1.7-1.8-1.8 A Starting current: 530-530-560 % Cos phi - power factor: 0.85-0.83-0.8 Rated speed: 3450-3470-3480 rpm Method of start: Direct-on-line (DOL) Enclosure class (IEC 34-5): IP66 Thermal protection: External Built-in temp. transmitter: Yes Motor No: 7C193704</div> <div>Others: Minimum efficiency index, MEI ≥: 0.50 Net weight: 68.4 lb Gross weight: 136 lb Shipping volume: 3.35 ft³ Country of origin: DK Custom tariff no.: 8413.70.2004</div> |
|---|---|

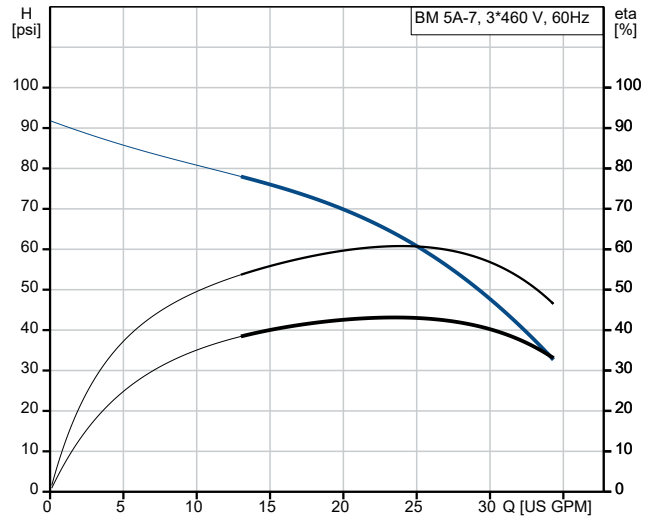
5783607 BM 5A-7 NBR 60 Hz



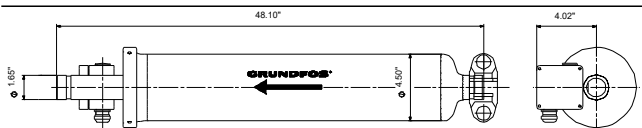
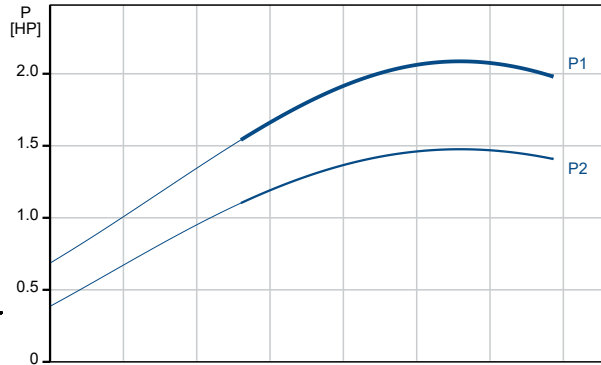
Pumped liquid = Water
 Liquid temperature during operation = 68 °F
 Density = 62.29 lb/ft³



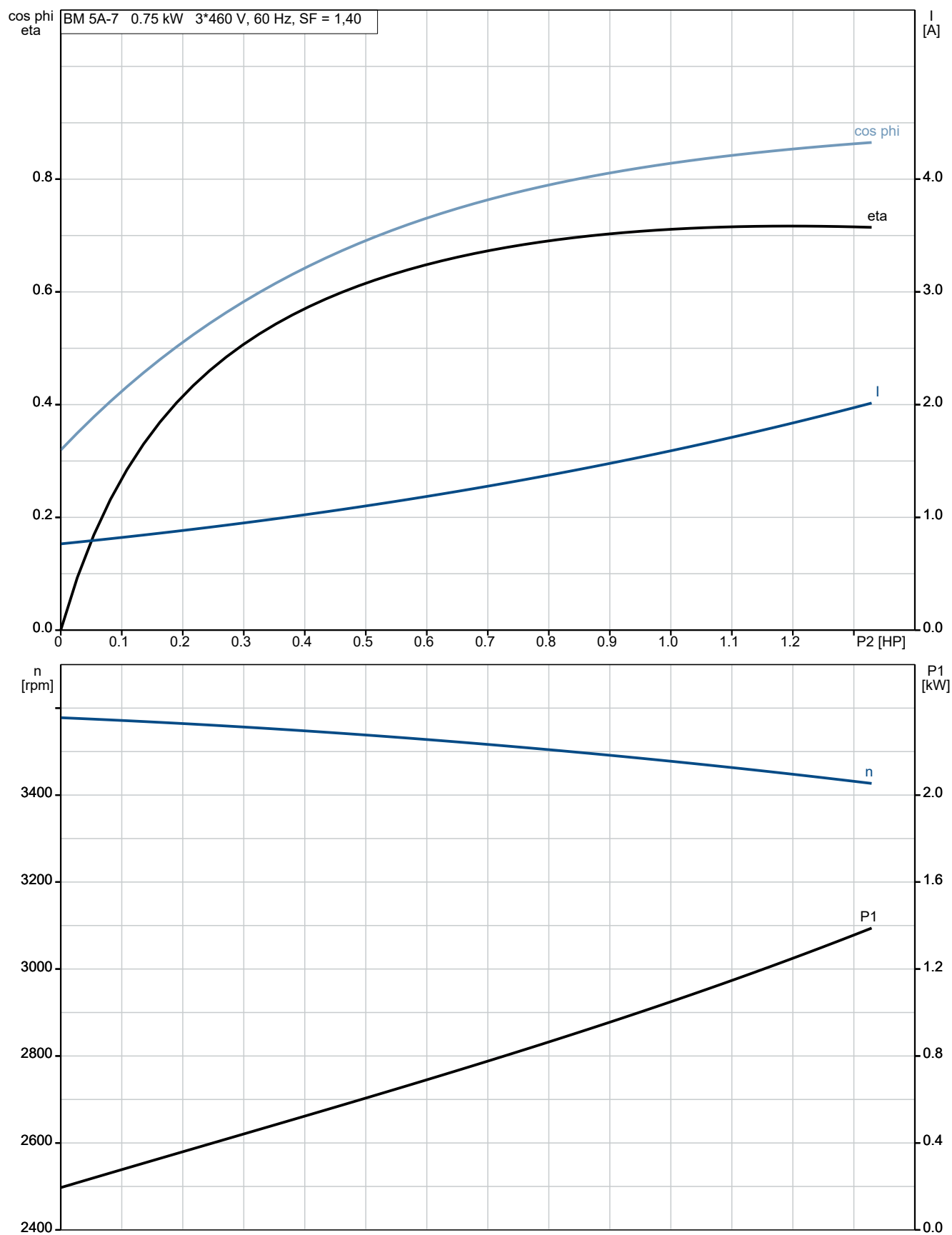
| Description | Value |
|-------------------------------------|----------------------|
| General information: | |
| Product name: | BM 5A-7 NBR |
| Product No: | 5783607 |
| EAN number: | 5711492336441 |
| Technical: | |
| Rated flow: | 26.4 US GPM |
| Rated head: | 65.31 psi |
| Stages: | 7 |
| Curve tolerance: | ISO9906:2012 3B |
| Model: | D |
| Materials: | |
| Pump: | Stainless steel |
| Pump: | DIN W.-Nr. 1.4301 |
| Pump: | AISI 304 |
| Impeller: | Stainless steel |
| Impeller: | EN 1.4301 |
| Impeller: | AISI 304 |
| Motor: | Stainless steel |
| Motor: | EN 1.4539 |
| Motor: | AISI 904L |
| Code for rubber: | NBR |
| Sleeve: | Stainless steel |
| Sleeve: | AISI 304 |
| Sleeve: | EN 1.4301 |
| Installation: | |
| Maximum operating pressure: | 1199.46 psi |
| Maximum permissible inlet pressure: | 725.19 psi |
| Maximum outlet pressure: | 1189.31 psi |
| Pipe connection standard: | PJE |
| Pipe connection: | S |
| Pipe connection: | 42 mm |
| Liquid: | |
| Pumped liquid: | Water |
| Maximum liquid temperature: | 104 °F |
| Selected liquid temperature: | 68 °F |
| Density: | 62.29 lb/ft³ |
| Electrical data: | |
| Rated power - P2: | 1 HP |
| Mains frequency: | 60 Hz |
| Rated voltage: | 3 x 440-460-480 V |
| Service factor: | 1.40 |
| Rated current: | 1.7-1.8-1.8 A |
| Starting current: | 530-530-560 % |
| Cos phi - power factor: | 0.85-0.83-0.8 |
| Rated speed: | 3450-3470-3480 rpm |
| Method of start: | Direct-on-line (DOL) |
| Enclosure class (IEC 34-5): | IP66 |
| Thermal protection: | External |
| Built-in temp. transmitter: | Yes |
| Motor No: | 7C193704 |
| Others: | |
| Minimum efficiency index, MEI ≥: | 0.50 |
| Net weight: | 68.4 lb |
| Gross weight: | 136 lb |
| Shipping volume: | 3.35 ft³ |
| Country of origin: | DK |
| Custom tariff no.: | 8413.70.2004 |



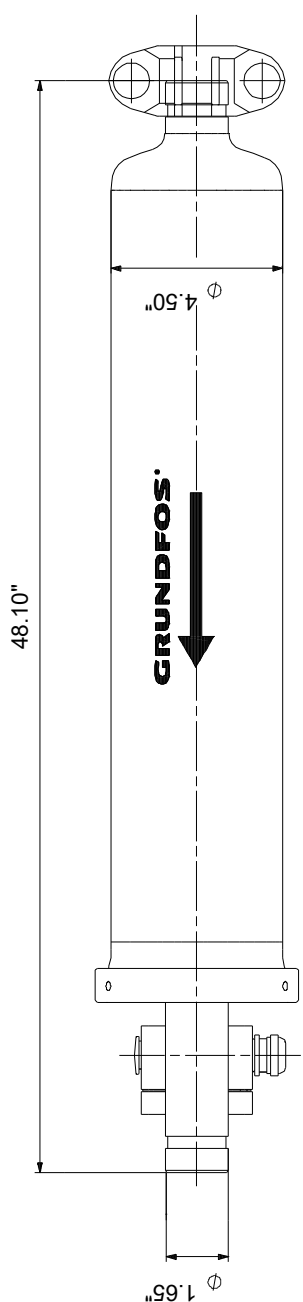
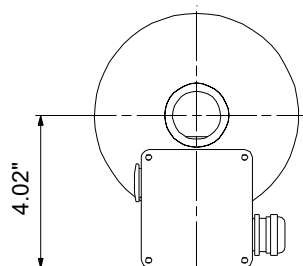
Pumped liquid = Water
Liquid temperature during operation = 68 °F
Density = 62.29 lb/ft³



5783607 BM 5A-7 NBR 60 Hz



5783607 BM 5A-7 NBR 60 Hz



Note! All units are in [in] unless others are stated.

Disclaimer: This simplified dimensional drawing does not show all details.