

Qty.	Description
------	-------------

1	BM 5A-9 NBR
---	-------------



Note! Product picture may differ from actual product

Product No.: [5783609](#)

BM is an encapsulated submersible pump that is suitable for applications where a high pressure is required. Therefore, BM is ideal for water treatment, liquid transfer, pressure boosting and closed circulation systems with a high static pressure.

BM pumps are available in four different versions (standard, N-version, NE-version, and R-version), in various sizes, and with a large variety in the number of impellers.

The range covers BM 3A to BM 215, a total of twelve sizes.

Depending on its size and frequency, a BM pump can reach a flow rate of 265 or 310 m3/h.

BM pumps can increase the system pressure up to 82.7 bar.

The pump is supplied with an asynchronous motor, Victaulic connections, a straight or 90° bent pipe for BM 3A, BM 5A and BM 9 pumps and a straight pipe for BM 18 and above.

The motor is protected by output filters against overvoltage and increased operating temperature.

As a result, BM is very reliable and durable.

The compact design ensures easy maintenance and alignment of the pump.

The stainless-steel pump and motor housing ensure an excellent resistance against different types of liquids. The R-version is designed to be highly efficient against corrosive liquids.

Three different types of asynchronous motors are available for BM pumps: MS 4000, MS 6000 and MMS 8000.

The enclosure class is IP68.

The motor power ranges from 0.75 to 92 kW.

The motor is controlled by a frequency converter and protected by Pt100 sensors.

The frequency converter is sold as a separate accessory and must be purchased along with the pump.

We recommend a Grundfos CUE frequency converter; however, frequency converters from alternative suppliers can be used as well.

Liquid:

Pumped liquid:	Water
Maximum liquid temperature:	104 °F
Selected liquid temperature:	68 °F
Density:	62.29 lb/ft <sup>3</sup>

Technical:

Rated flow:	26.4 US GPM
Rated head:	85.19 psi
Curve tolerance:	ISO9906:2012 3B

Materials:

Pump:	Stainless steel
	DIN W.-Nr. 1.4301
	AISI 304
Impeller:	Stainless steel
	EN 1.4301
	AISI 304



Company name:

Created by:

Phone:

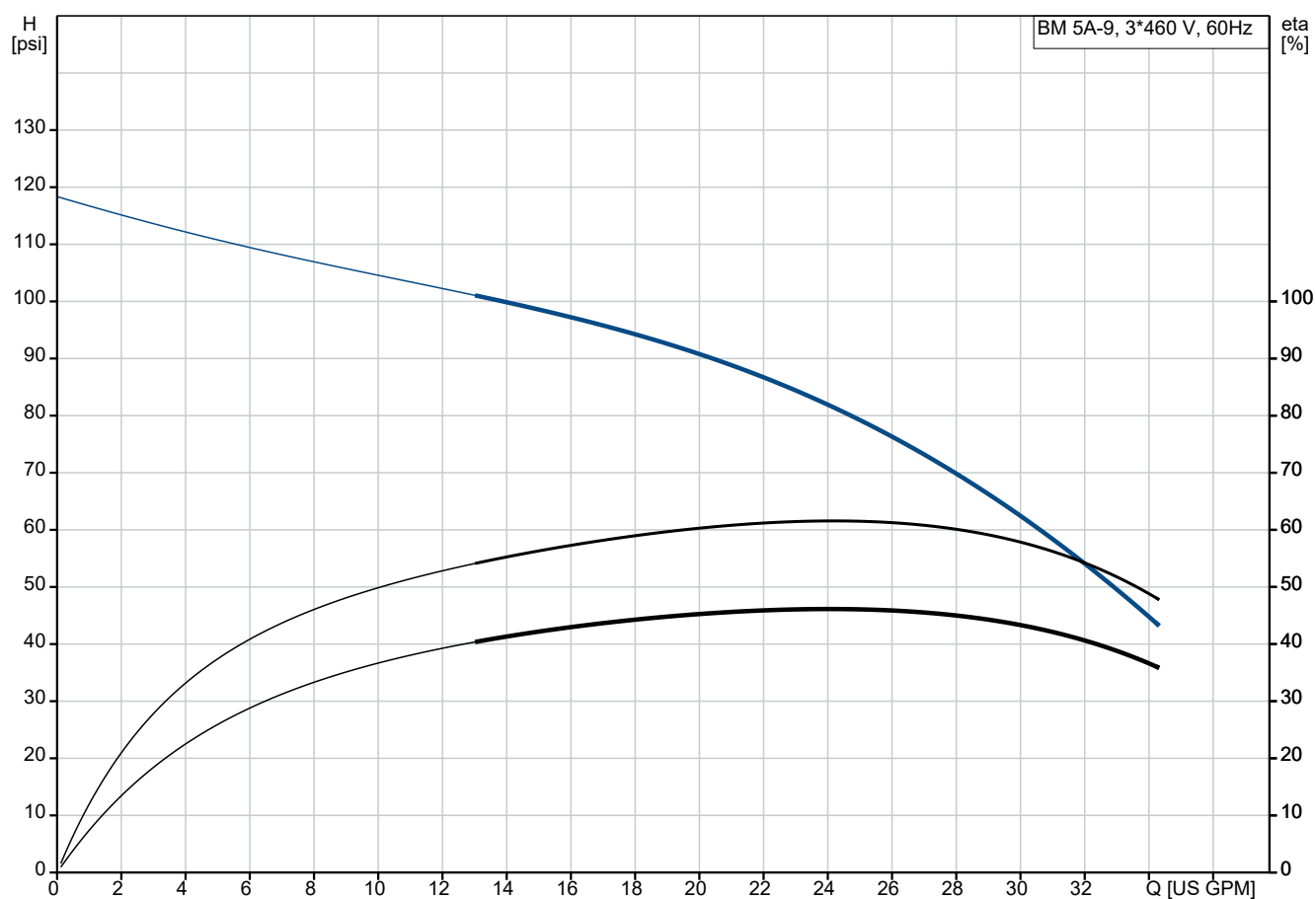
Date:

23/01/2025

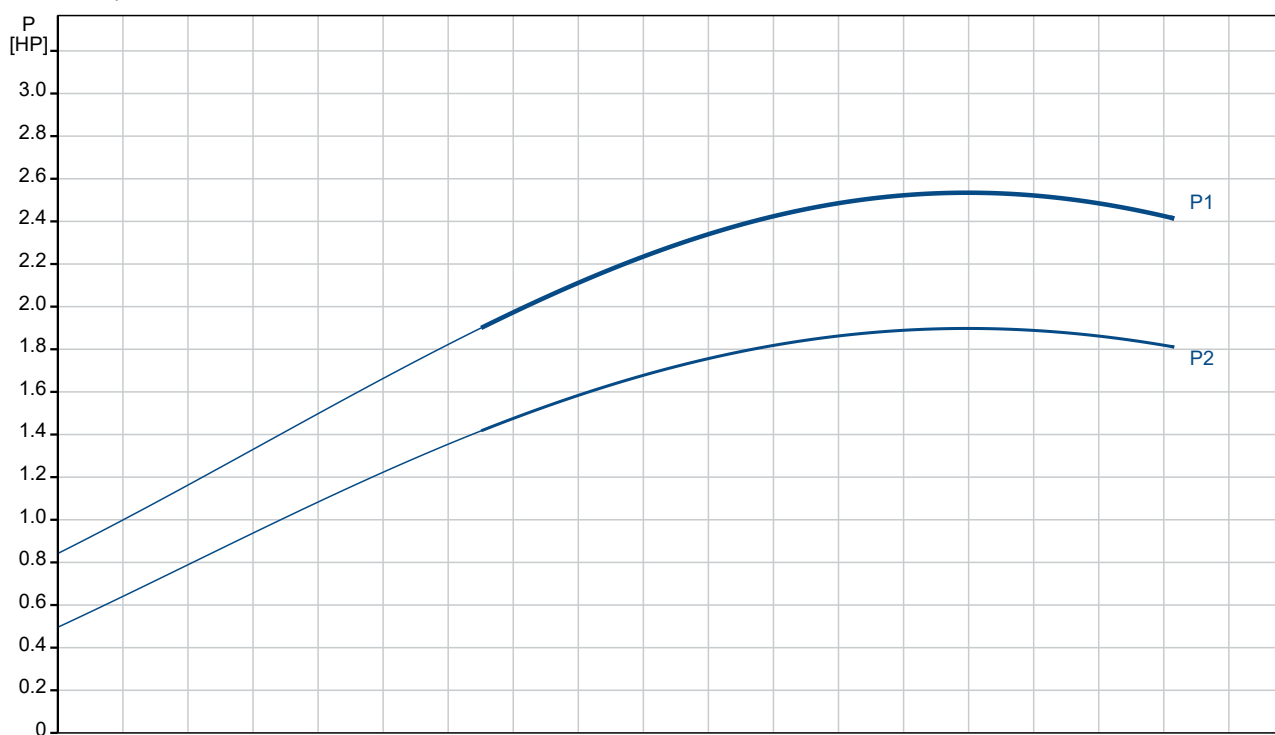
Qty.	Description
------	-------------

1	Motor: Stainless steel EN 1.4539 AISI 904L Sleeve: Stainless steel AISI 304 EN 1.4301  Installation: Maximum operating pressure: 1199.46 psi Maximum permissible inlet pressure: 725.19 psi Maximum outlet pressure: 1189.31 psi Pipe connection standard: PJE Pipe connection: 42 mm  Electrical data: Rated power - P2: 1.5 HP Mains frequency: 60 Hz Rated voltage: 3 x 440-460-480 V Service factor: 1.30 Rated current: 2.5-2.5-2.5 A Starting current: 520-560-560 % Cos phi - power factor: 0.83-0.8-0.75 Rated speed: 3470-3480-3490 rpm Method of start: Direct-on-line (DOL) Enclosure class (IEC 34-5): IP66 Thermal protection: External Built-in temp. transmitter: Yes Motor No: 7C193705  Others: Minimum efficiency index, MEI ≥: 0.50 Net weight: 70.6 lb Gross weight: 137 lb Shipping volume: 3.35 ft³ Country of origin: DK Custom tariff no.: 8413.70.2004
---	--

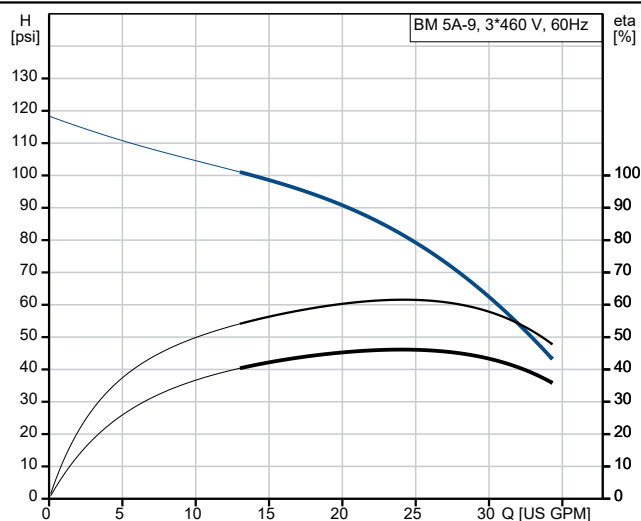
## 5783609 BM 5A-9 NBR 60 Hz



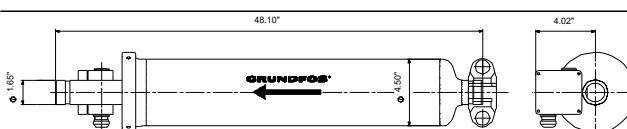
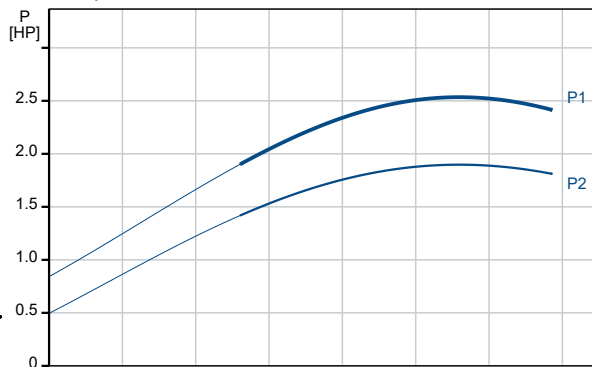
Pumped liquid = Water  
 Liquid temperature during operation = 68 °F  
 Density = 62.29 lb/ft³



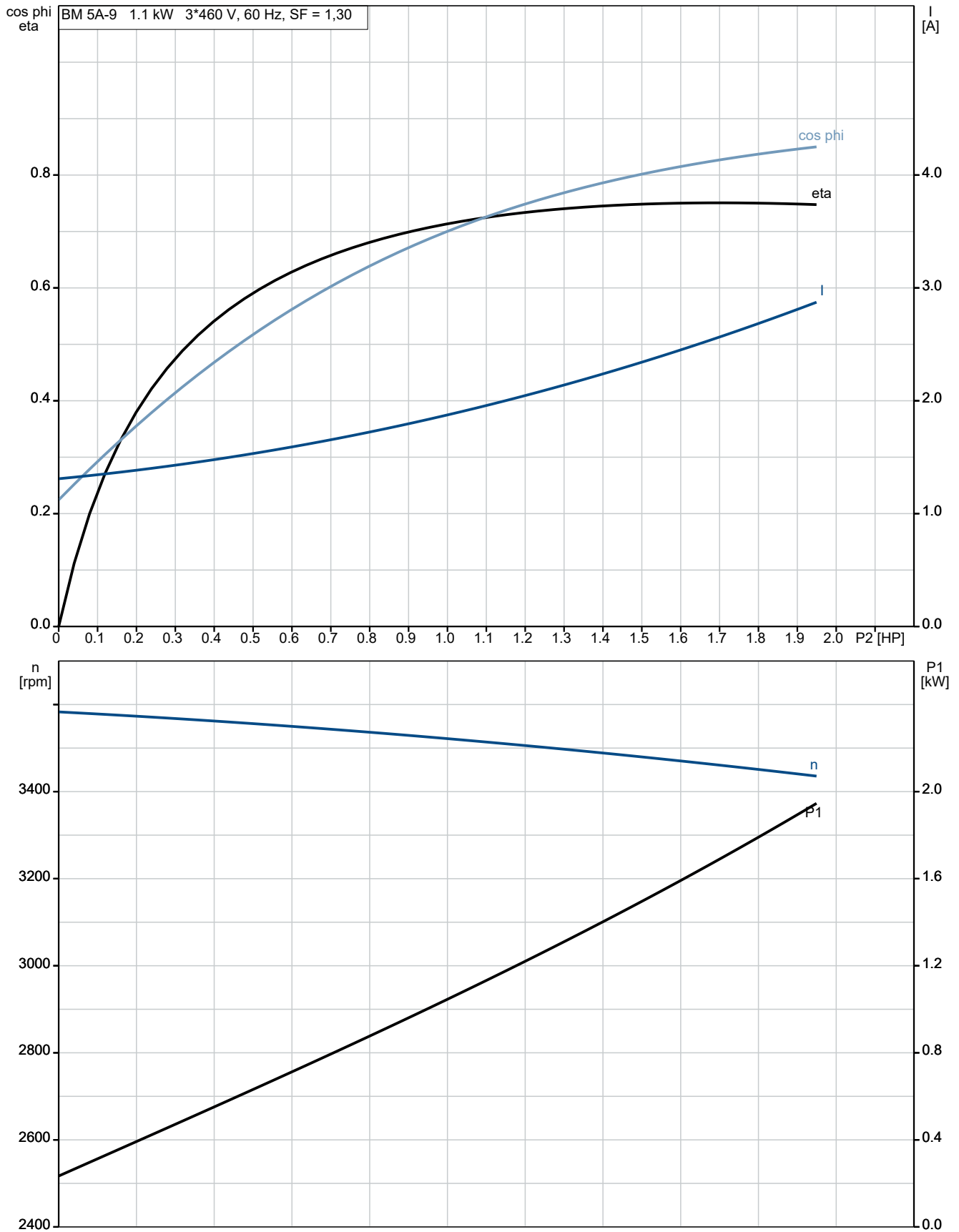
Description	Value
<b>General information:</b>	
Product name:	BM 5A-9 NBR
Product No:	5783609
EAN number:	5711492336458
<b>Technical:</b>	
Rated flow:	26.4 US GPM
Rated head:	85.19 psi
Stages:	9
Curve tolerance:	ISO9906:2012 3B
Model:	D
<b>Materials:</b>	
Pump:	Stainless steel
Pump:	DIN W.-Nr. 1.4301
Pump:	AISI 304
Impeller:	Stainless steel
Impeller:	EN 1.4301
Impeller:	AISI 304
Motor:	Stainless steel
Motor:	EN 1.4539
Motor:	AISI 904L
Code for rubber:	NBR
Sleeve:	Stainless steel
Sleeve:	AISI 304
Sleeve:	EN 1.4301
<b>Installation:</b>	
Maximum operating pressure:	1199.46 psi
Maximum permissible inlet pressure:	725.19 psi
Maximum outlet pressure:	1189.31 psi
Pipe connection standard:	PJE
Pipe connection:	S
Pipe connection:	42 mm
<b>Liquid:</b>	
Pumped liquid:	Water
Maximum liquid temperature:	104 °F
Selected liquid temperature:	68 °F
Density:	62.29 lb/ft³
<b>Electrical data:</b>	
Rated power - P2:	1.5 HP
Mains frequency:	60 Hz
Rated voltage:	3 x 440-460-480 V
Service factor:	1.30
Rated current:	2.5-2.5-2.5 A
Starting current:	520-560-560 %
Cos phi - power factor:	0.83-0.8-0.75
Rated speed:	3470-3480-3490 rpm
Method of start:	Direct-on-line (DOL)
Enclosure class (IEC 34-5):	IP66
Thermal protection:	External
Built-in temp. transmitter:	Yes
Motor No:	7C193705
<b>Others:</b>	
Minimum efficiency index, MEI ≥:	0.50
Net weight:	70.6 lb
Gross weight:	137 lb
Shipping volume:	3.35 ft³
Country of origin:	DK
Custom tariff no.:	8413.70.2004



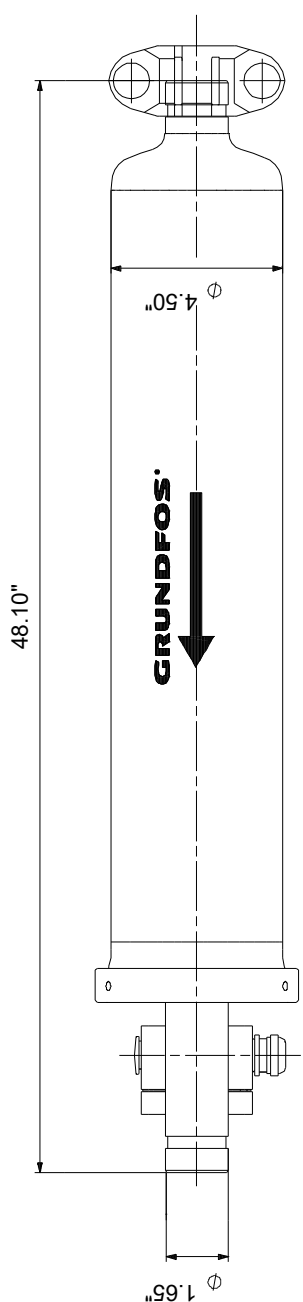
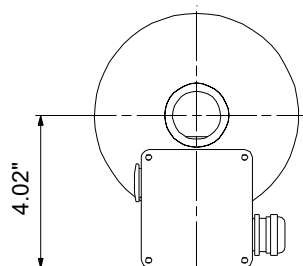
Pumped liquid = Water  
Liquid temperature during operation = 68 °F  
Density = 62.29 lb/ft³



## 5783609 BM 5A-9 NBR 60 Hz



## 5783609 BM 5A-9 NBR 60 Hz



Note! All units are in [in] unless others are stated.

Disclaimer: This simplified dimensional drawing does not show all details.