


Qty.	Description																																
1	<p>BM 5A-11 NBR</p>  <p>Note! Product picture may differ from actual product</p> <p>Product No.: 5783611</p> <p>BM is an encapsulated submersible pump that is suitable for applications where a high pressure is required. Therefore, BM is ideal for water treatment, liquid transfer, pressure boosting and closed circulation systems with a high static pressure.</p> <p>BM pumps are available in four different versions (standard, N-version, NE-version, and R-version), in various sizes, and with a large variety in the number of impellers.</p> <p>The range covers BM 3A to BM 215, a total of twelve sizes.</p> <p>Depending on its size and frequency, a BM pump can reach a flow rate of 265 or 310 m3/h.</p> <p>BM pumps can increase the system pressure up to 82.7 bar.</p> <p>The pump is supplied with an asynchronous motor, Victaulic connections, a straight or 90° bent pipe for BM 3A, BM 5A and BM 9 pumps and a straight pipe for BM 18 and above.</p> <p>The motor is protected by output filters against overvoltage and increased operating temperature.</p> <p>As a result, BM is very reliable and durable.</p> <p>The compact design ensures easy maintenance and alignment of the pump.</p> <p>The stainless-steel pump and motor housing ensure an excellent resistance against different types of liquids. The R-version is designed to be highly efficient against corrosive liquids.</p> <p>Three different types of asynchronous motors are available for BM pumps: MS 4000, MS 6000 and MMS 8000.</p> <p>The enclosure class is IP68.</p> <p>The motor power ranges from 0.75 to 92 kW.</p> <p>The motor is controlled by a frequency converter and protected by Pt100 sensors.</p> <p>The frequency converter is sold as a separate accessory and must be purchased along with the pump.</p> <p>We recommend a Grundfos CUE frequency converter; however, frequency converters from alternative suppliers can be used as well.</p> <table> <tr> <td>Liquid:</td><td></td></tr> <tr> <td>Pumped liquid:</td><td>Water</td></tr> <tr> <td>Maximum liquid temperature:</td><td>104 °F</td></tr> <tr> <td>Selected liquid temperature:</td><td>68 °F</td></tr> <tr> <td>Density:</td><td>62.29 lb/ft³</td></tr> <tr> <td>Technical:</td><td></td></tr> <tr> <td>Rated flow:</td><td>26.4 US GPM</td></tr> <tr> <td>Rated head:</td><td>103.6 psi</td></tr> <tr> <td>Curve tolerance:</td><td>ISO9906:2012 3B</td></tr> <tr> <td>Materials:</td><td></td></tr> <tr> <td>Pump:</td><td>Stainless steel</td></tr> <tr> <td></td><td>DIN W.-Nr. 1.4301</td></tr> <tr> <td></td><td>AISI 304</td></tr> <tr> <td>Impeller:</td><td>Stainless steel</td></tr> <tr> <td></td><td>EN 1.4301</td></tr> <tr> <td></td><td>AISI 304</td></tr> </table>	Liquid:		Pumped liquid:	Water	Maximum liquid temperature:	104 °F	Selected liquid temperature:	68 °F	Density:	62.29 lb/ft ³	Technical:		Rated flow:	26.4 US GPM	Rated head:	103.6 psi	Curve tolerance:	ISO9906:2012 3B	Materials:		Pump:	Stainless steel		DIN W.-Nr. 1.4301		AISI 304	Impeller:	Stainless steel		EN 1.4301		AISI 304
Liquid:																																	
Pumped liquid:	Water																																
Maximum liquid temperature:	104 °F																																
Selected liquid temperature:	68 °F																																
Density:	62.29 lb/ft ³																																
Technical:																																	
Rated flow:	26.4 US GPM																																
Rated head:	103.6 psi																																
Curve tolerance:	ISO9906:2012 3B																																
Materials:																																	
Pump:	Stainless steel																																
	DIN W.-Nr. 1.4301																																
	AISI 304																																
Impeller:	Stainless steel																																
	EN 1.4301																																
	AISI 304																																



Company name:

Created by:

Phone:

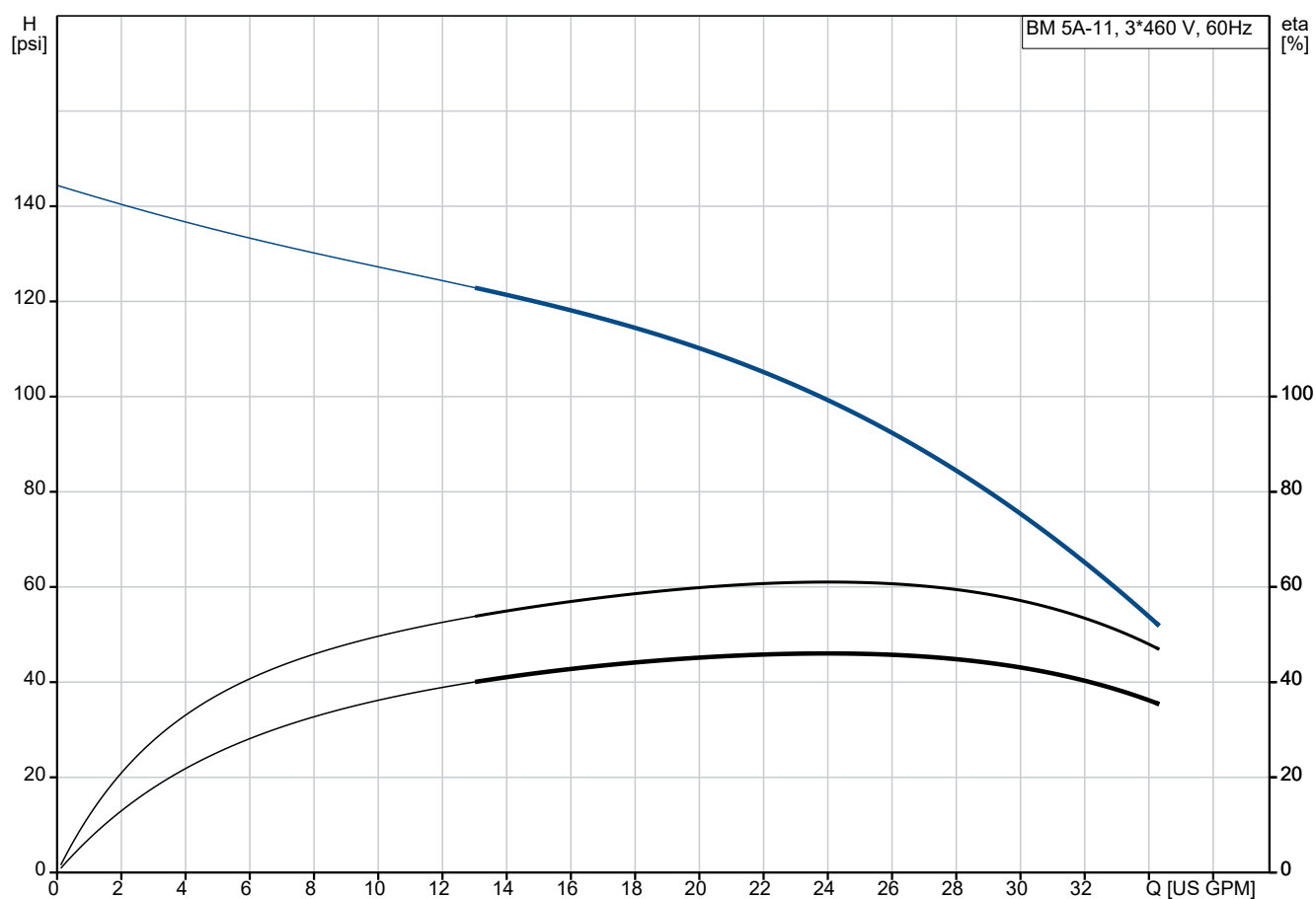
Date:

23/01/2025

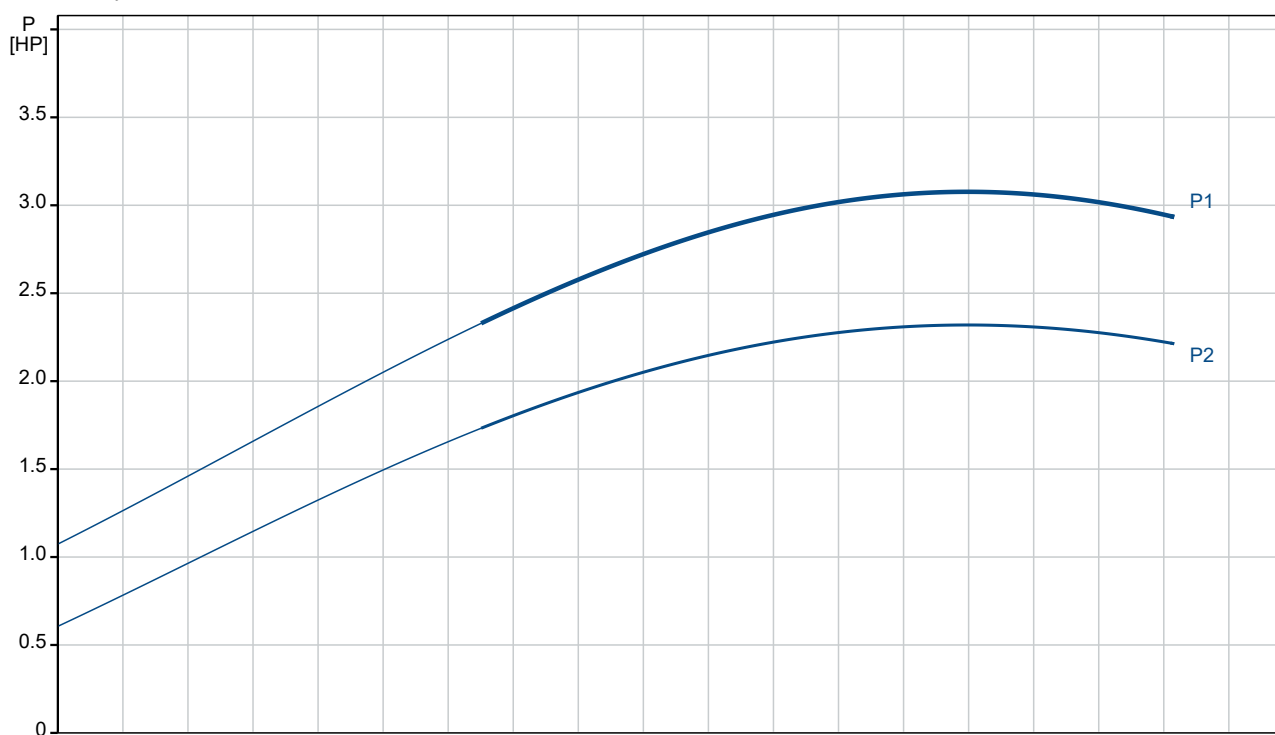
Qty.	Description
------	-------------

1	Motor: Stainless steel EN 1.4539 AISI 904L Sleeve: Stainless steel AISI 304 EN 1.4301 Installation: Maximum operating pressure: 1199.46 psi Maximum permissible inlet pressure: 725.19 psi Maximum outlet pressure: 1189.31 psi Pipe connection standard: PJE Pipe connection: 42 mm Electrical data: Rated power - P2: 2 HP Mains frequency: 60 Hz Rated voltage: 3 x 440-460-480 V Service factor: 1.25 Rated current: 3.5-3.6-3.8 A Starting current: 490-500-500 % Cos phi - power factor: 0.8-0.75-0.7 Rated speed: 3460-3480-3490 rpm Method of start: Direct-on-line (DOL) Enclosure class (IEC 34-5): IP66 Thermal protection: External Built-in temp. transmitter: Yes Motor No: 7C193706 Others: Minimum efficiency index, MEI ≥: 0.50 Net weight: 72.8 lb Gross weight: 138 lb Shipping volume: 3.53 ft³ Country of origin: DK Custom tariff no.: 8413.70.2004
---	---

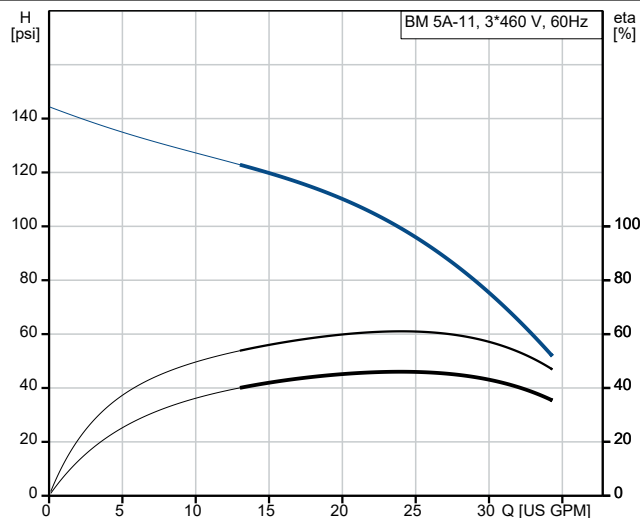
5783611 BM 5A-11 NBR 60 Hz



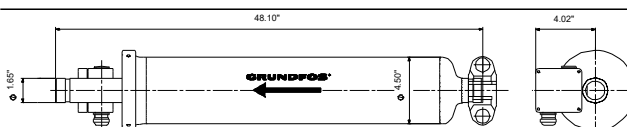
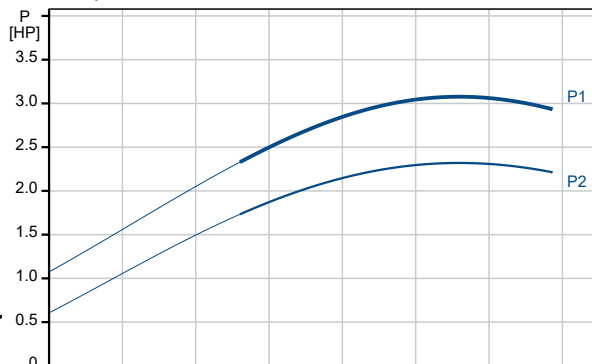
Pumped liquid = Water
 Liquid temperature during operation = 68 °F
 Density = 62.29 lb/ft³



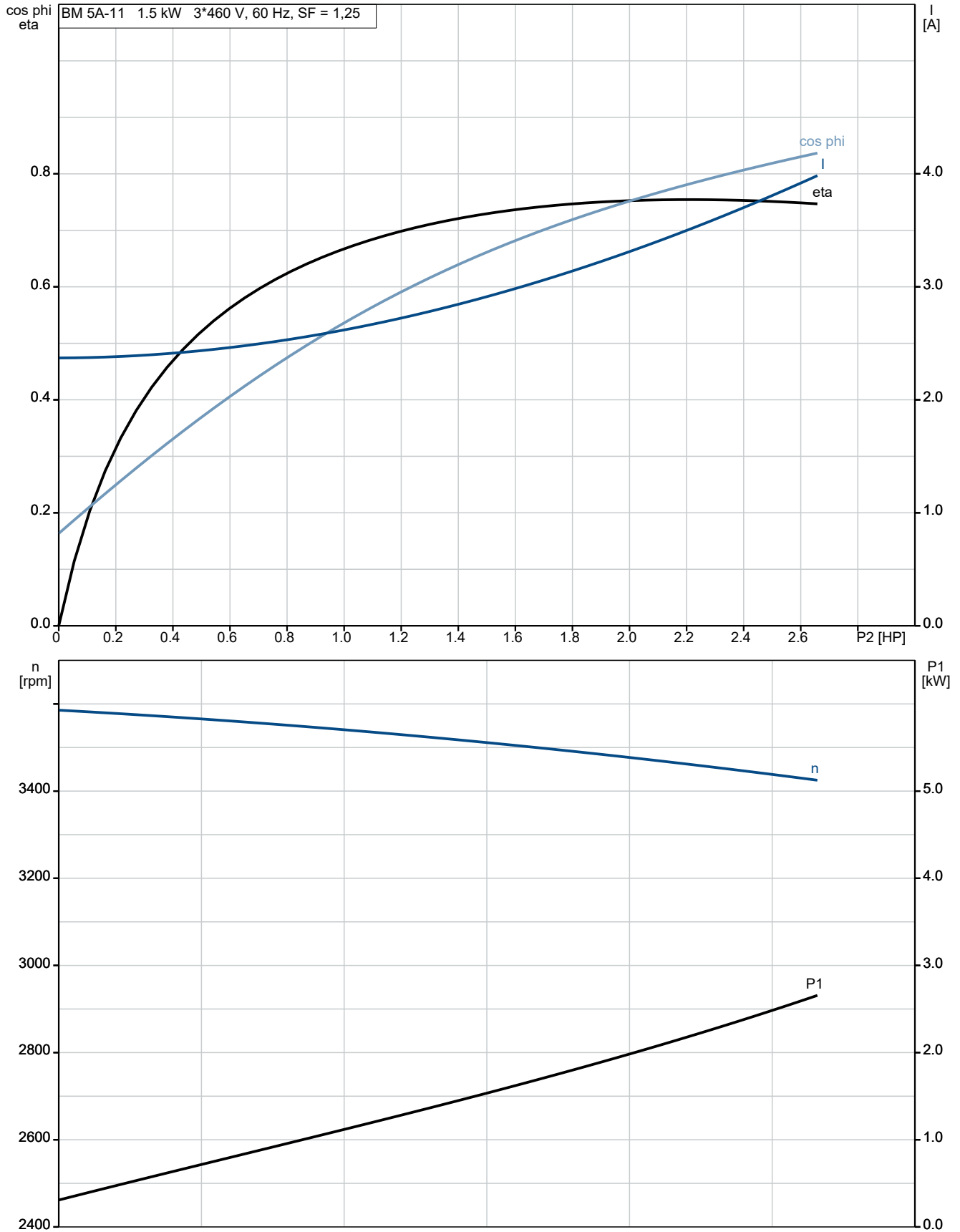
Description	Value
General information:	
Product name:	BM 5A-11 NBR
Product No:	5783611
EAN number:	5711492336465
Technical:	
Rated flow:	26.4 US GPM
Rated head:	103.6 psi
Stages:	11
Curve tolerance:	ISO9906:2012 3B
Model:	D
Materials:	
Pump:	Stainless steel
Pump:	DIN W.-Nr. 1.4301
Pump:	AISI 304
Impeller:	Stainless steel
Impeller:	EN 1.4301
Impeller:	AISI 304
Motor:	Stainless steel
Motor:	EN 1.4539
Motor:	AISI 904L
Code for rubber:	NBR
Sleeve:	Stainless steel
Sleeve:	AISI 304
Sleeve:	EN 1.4301
Installation:	
Maximum operating pressure:	1199.46 psi
Maximum permissible inlet pressure:	725.19 psi
Maximum outlet pressure:	1189.31 psi
Pipe connection standard:	PJE
Pipe connection:	S
Pipe connection:	42 mm
Liquid:	
Pumped liquid:	Water
Maximum liquid temperature:	104 °F
Selected liquid temperature:	68 °F
Density:	62.29 lb/ft³
Electrical data:	
Rated power - P2:	2 HP
Mains frequency:	60 Hz
Rated voltage:	3 x 440-460-480 V
Service factor:	1.25
Rated current:	3.5-3.6-3.8 A
Starting current:	490-500-500 %
Cos phi - power factor:	0.8-0.75-0.7
Rated speed:	3460-3480-3490 rpm
Method of start:	Direct-on-line (DOL)
Enclosure class (IEC 34-5):	IP66
Thermal protection:	External
Built-in temp. transmitter:	Yes
Motor No:	7C193706
Others:	
Minimum efficiency index, MEI ≥:	0.50
Net weight:	72.8 lb
Gross weight:	138 lb
Shipping volume:	3.53 ft³
Country of origin:	DK
Custom tariff no.:	8413.70.2004



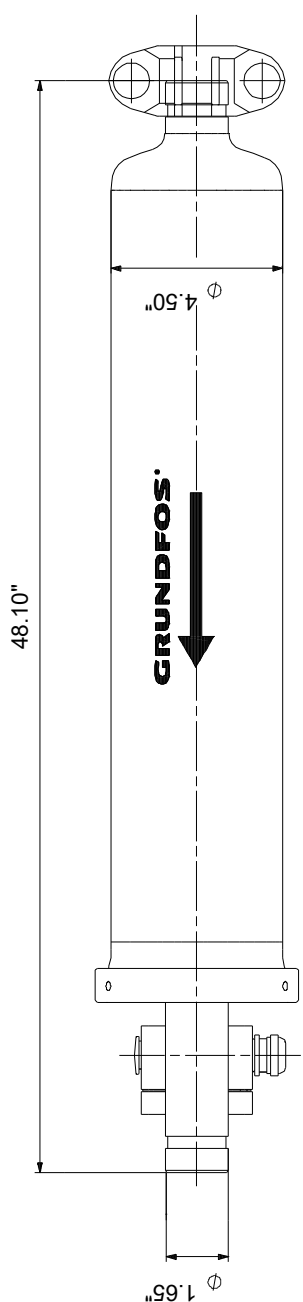
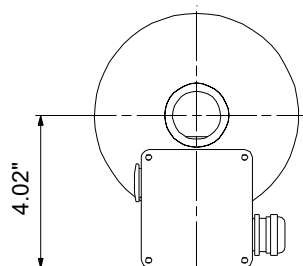
Pumped liquid = Water
Liquid temperature during operation = 68 °F
Density = 62.29 lb/ft³



5783611 BM 5A-11 NBR 60 Hz



5783611 BM 5A-11 NBR 60 Hz



Note! All units are in [in] unless others are stated.

Disclaimer: This simplified dimensional drawing does not show all details.