

Qty.	Description
------	-------------

1	BM 30-4 NBR
---	-------------



Note! Product picture may differ from actual product

Product No.: [98490831](#)

BM is an encapsulated submersible pump that is suitable for applications where a high pressure is required. Therefore, BM is ideal for water treatment, liquid transfer, pressure boosting and closed circulation systems with a high static pressure.

BM pumps are available in four different versions (standard, N-version, NE-version, and R-version), in various sizes, and with a large variety in the number of impellers.

The range covers BM 3A to BM 215, a total of twelve sizes.

Depending on its size and frequency, a BM pump can reach a flow rate of 265 or 310 m3/h.

BM pumps can increase the system pressure up to 82.7 bar.

The pump is supplied with an asynchronous motor, Victaulic connections, a straight or 90° bent pipe for BM 3A, BM 5A and BM 9 pumps and a straight pipe for BM 18 and above.

The motor is protected by output filters against overvoltage and increased operating temperature.

As a result, BM is very reliable and durable.

The compact design ensures easy maintenance and alignment of the pump.

The stainless-steel pump and motor housing ensure an excellent resistance against different types of liquids. The R-version is designed to be highly efficient against corrosive liquids.

Three different types of asynchronous motors are available for BM pumps: MS 4000, MS 6000 and MMS 8000.

The enclosure class is IP68.

The motor power ranges from 0.75 to 92 kW.

The motor is controlled by a frequency converter and protected by Pt100 sensors.

The frequency converter is sold as a separate accessory and must be purchased along with the pump.

We recommend a Grundfos CUE frequency converter; however, frequency converters from alternative suppliers can be used as well.

Liquid:

Pumped liquid:	Water
Maximum liquid temperature:	104 °F
Selected liquid temperature:	68 °F
Density:	62.29 lb/ft ³

Technical:

Rated flow:	159 US GPM
Rated head:	59.63 psi
Curve tolerance:	ISO9906:2012 3B

Materials:

Pump:	Stainless steel
	DIN W.-Nr. 1.4301
	AISI 304
Impeller:	Stainless steel
	EN 1.4301
	AISI 304



Company name:

Created by:

Phone:

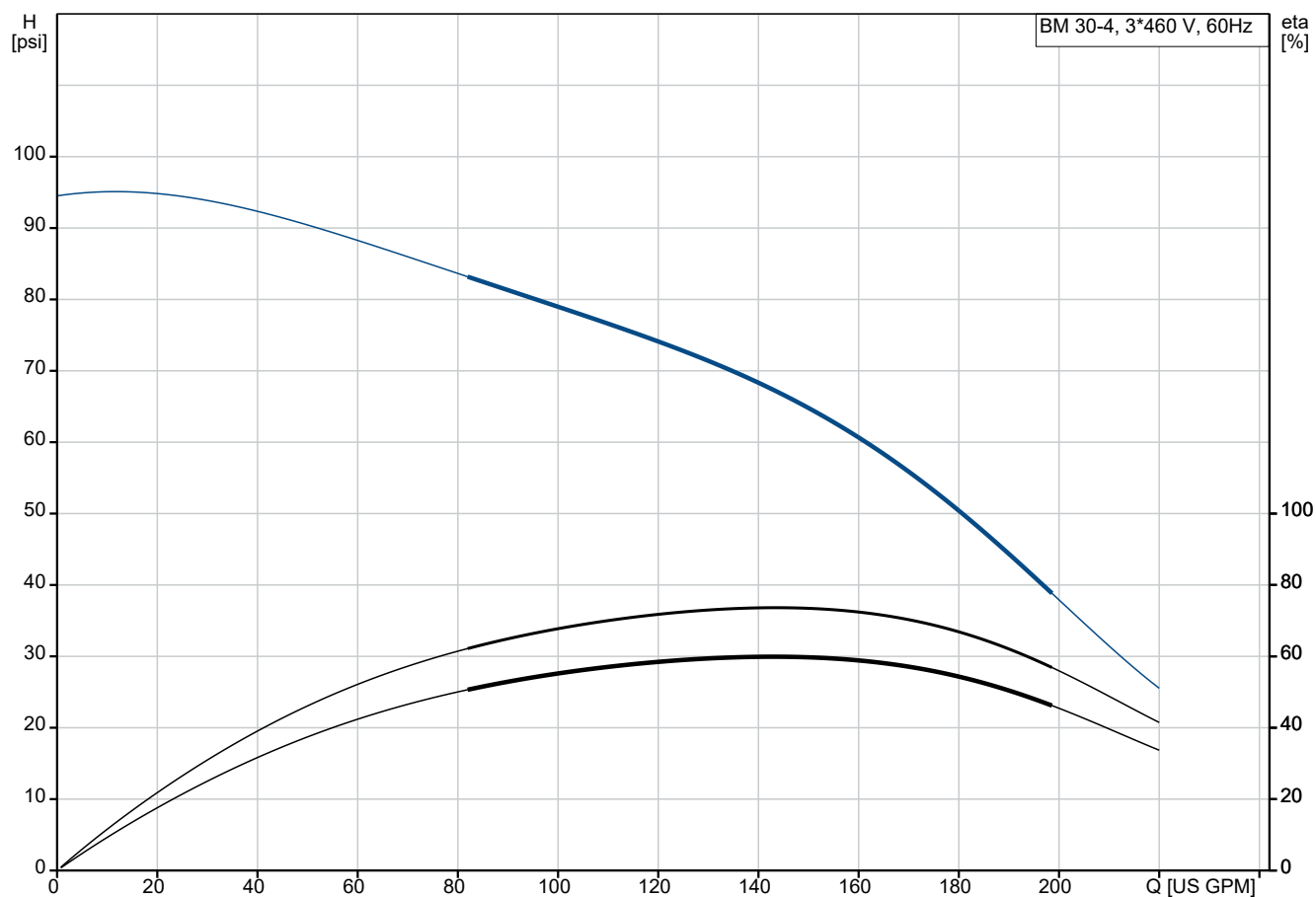
Date:

28/01/2025

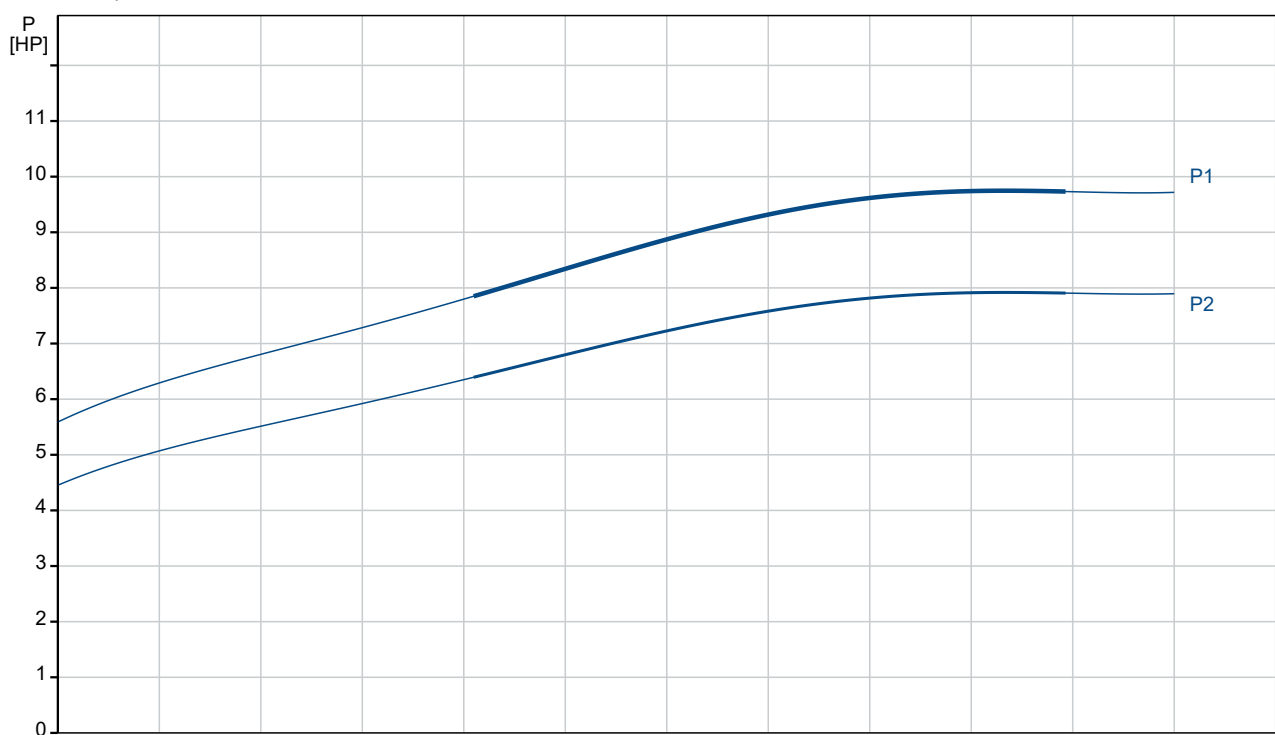
Qty.	Description
------	-------------

1	Motor: Stainless steel 1.4301 304
	Sleeve: Stainless steel AISI 304 EN 1.4301
	Installation: Maximum permissible inlet pressure: 725.19 psi Maximum outlet pressure: 1189.31 psi Pipe connection standard: PJE Pipe connection: 89 mm
	Electrical data: Rated power - P2: 7.5 HP Mains frequency: 60 Hz Rated voltage: 3 x 440-480 V 3 x 440-460-480 V
	Service factor: 1.15 1.15
	Rated current: 17.4-17 A 12.8-12.6-12.8 A
	Maximum current consumption: 12.8 A
	Starting current: 500-550-590 %
	Cos phi - power factor: 0.87-0.82-0.78
	Start. method: direct-on-line
	Method of start: DOL
	Enclosure class (IEC 34-5): IP54
	Thermal protection: EXT.
	Built-in temp. transmitter: Y
	Motor No: 79195511
	Others: Minimum efficiency index, MEI \geq : 0.50
	Net weight: 141 lb
	Gross weight: 203 lb
	Shipping volume: 11.3 ft ³

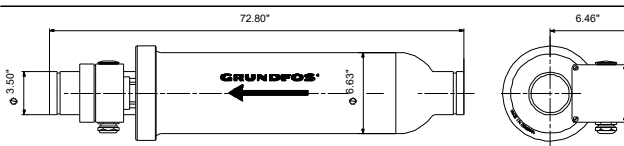
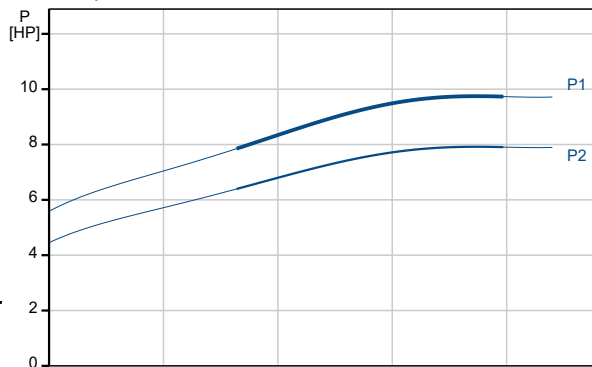
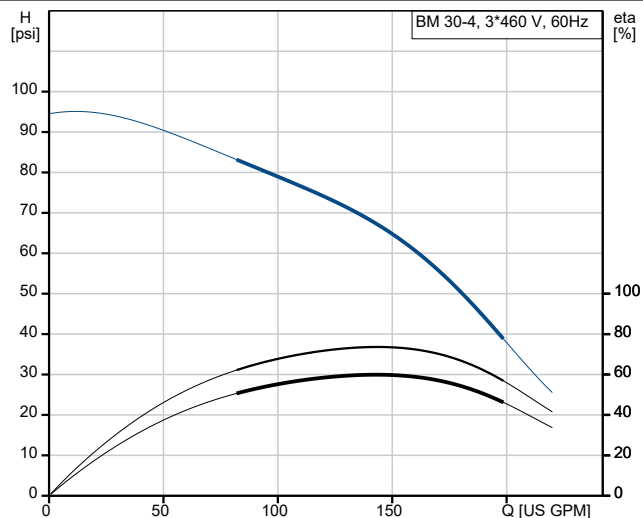
98490831 BM 30-4 NBR 60 Hz



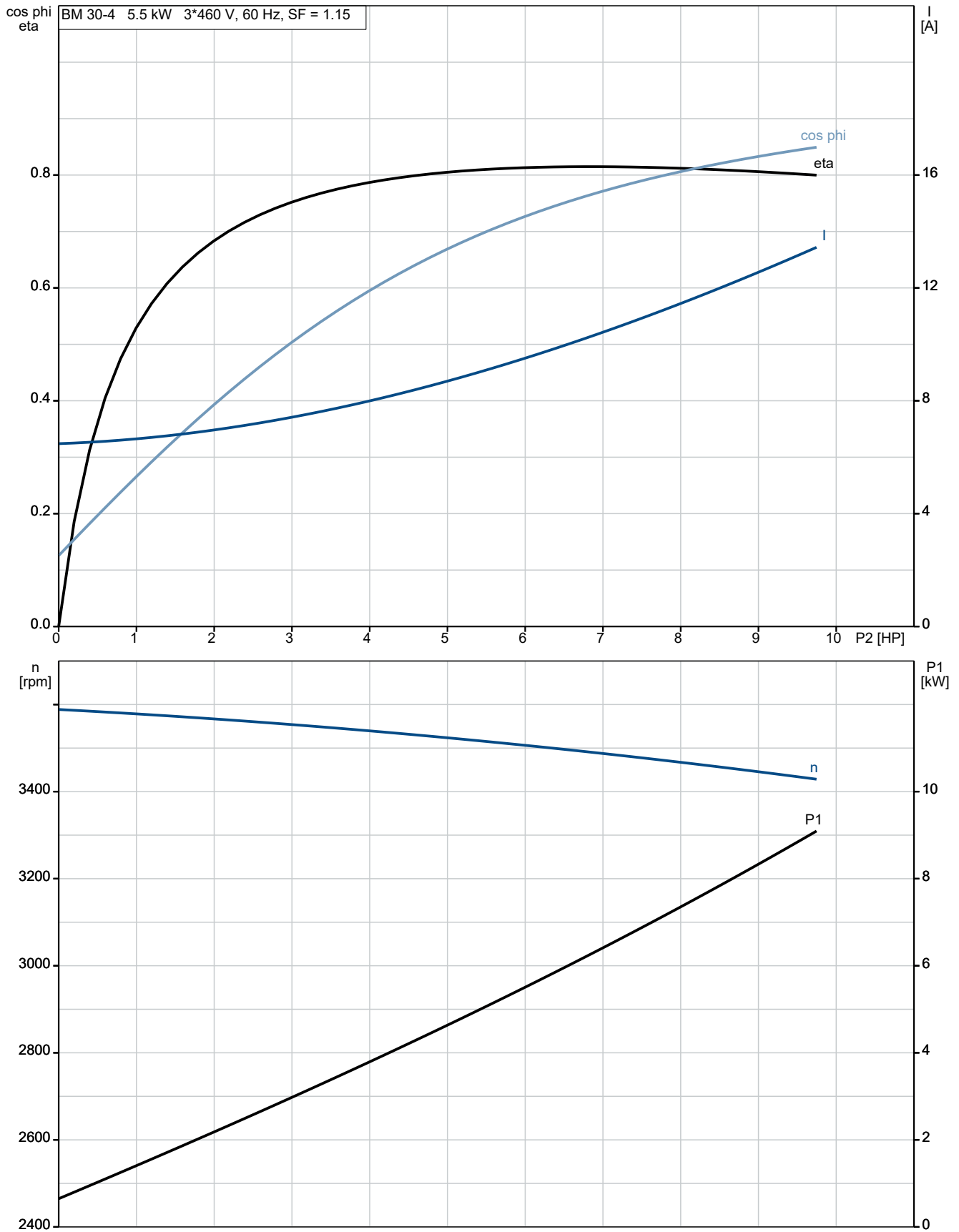
Pumped liquid = Water
 Liquid temperature during operation = 68 °F
 Density = 62.29 lb/ft³



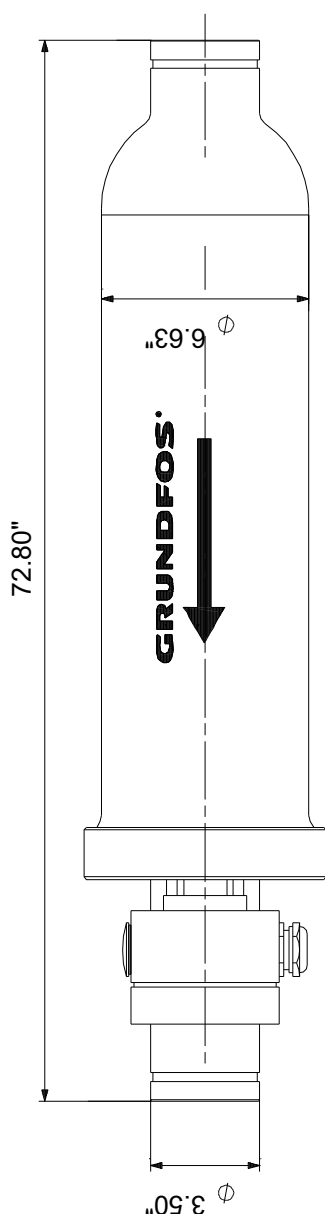
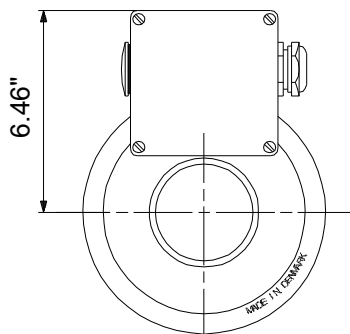
Description	Value
General information:	
Product name:	BM 30-4 NBR
Product No:	98490831
Technical:	
Rated flow:	159 US GPM
Rated head:	59.63 psi
Stages:	4
Curve tolerance:	ISO9906:2012 3B
Model:	E
Materials:	
Pump:	Stainless steel
Pump:	DIN W.-Nr. 1.4301
Pump:	AISI 304
Impeller:	Stainless steel
Impeller:	EN 1.4301
Impeller:	AISI 304
Motor:	Stainless steel
Motor:	1.4301
Motor:	304
Code for rubber:	NBR
Sleeve:	Stainless steel
Sleeve:	AISI 304
Sleeve:	EN 1.4301
Installation:	
Maximum permissible inlet pressure:	725.19 psi
Maximum outlet pressure:	1189.31 psi
Pipe connection standard:	PJE
Pipe connection:	89 mm
Liquid:	
Pumped liquid:	Water
Maximum liquid temperature:	104 °F
Selected liquid temperature:	68 °F
Density:	62.29 lb/ft³
Electrical data:	
Rated power - P2:	7.5 HP
Mains frequency:	60 Hz
Rated voltage:	3 x 440-480 V
Rated voltage:	3 x 440-460-480 V
Service factor:	1.15
Service factor:	1.15
Rated current:	17.4-17 A
Rated current:	12.8-12.6-12.8 A
Maximum current consumption:	12.8 A
Starting current:	500-550-590 %
Cos phi - power factor:	0.87-0.82-0.78
Start. method:	direct-on-line
Method of start:	DOL
Enclosure class (IEC 34-5):	IP54
Thermal protection:	EXT.
Built-in temp. transmitter:	Y
Motor No:	79195511
Others:	
Minimum efficiency index, MEI ≥:	0.50
Net weight:	141 lb
Gross weight:	203 lb
Shipping volume:	11.3 ft³



98490831 BM 30-4 NBR 60 Hz



98490831 BM 30-4 NBR 60 Hz



Note! All units are in [in] unless others are stated.
Disclaimer: This simplified dimensional drawing does not show all details.