

Qty. Description

1 **BM 30-5 NBR**



Note! Product picture may differ from actual product

Product No.: [98490832](#)

BM is an encapsulated submersible pump that is suitable for applications where a high pressure is required. Therefore, BM is ideal for water treatment, liquid transfer, pressure boosting and closed circulation systems with a high static pressure.

BM pumps are available in four different versions (standard, N-version, NE-version, and R-version), in various sizes, and with a large variety in the number of impellers.

The range covers BM 3A to BM 215, a total of twelve sizes.

Depending on its size and frequency, a BM pump can reach a flow rate of 265 or 310 m³/h.

BM pumps can increase the system pressure up to 82.7 bar.

The pump is supplied with an asynchronous motor, Victaulic connections, a straight or 90° bent pipe for BM 3A, BM 5A and BM 9 pumps and a straight pipe for BM 18 and above.

The motor is protected by output filters against overvoltage and increased operating temperature.

As a result, BM is very reliable and durable.

The compact design ensures easy maintenance and alignment of the pump.

The stainless-steel pump and motor housing ensure an excellent resistance against different types of liquids. The R-version is designed to be highly efficient against corrosive liquids.

Three different types of asynchronous motors are available for BM pumps: MS 4000, MS 6000 and MMS 8000.

The enclosure class is IP68.

The motor power ranges from 0.75 to 92 kW.

The motor is controlled by a frequency converter and protected by Pt100 sensors.

The frequency converter is sold as a separate accessory and must be purchased along with the pump.

We recommend a Grundfos CUE frequency converter; however, frequency converters from alternative suppliers can be used as well.

Liquid:

Pumped liquid: Water
 Maximum liquid temperature: 104 °F
 Selected liquid temperature: 68 °F
 Density: 62.29 lb/ft³

Technical:

Rated flow: 159 US GPM
 Rated head: 75.25 psi
 Curve tolerance: ISO9906:2012 3B

Materials:

Pump: Stainless steel
 DIN W.-Nr. 1.4301
 AISI 304
 Impeller: Stainless steel
 EN 1.4301
 AISI 304



Company name:

Created by:

Phone:

Date:

28/01/2025

Qty. Description

| | | |
|---|----------------------------------------|--------------------------------------------------|
| 1 | Motor: | Stainless steel DIN W.-Nr. 1.4301 AISI 304 |
| | Sleeve: | Stainless steel AISI 304 EN 1.4301 |
| | Installation: | |
| | Maximum operating pressure: | 1199.46 psi |
| | Maximum permissible inlet pressure: | 725.19 psi |
| | Maximum outlet pressure: | 1189.31 psi |
| | Pipe connection standard: | PJE |
| | Pipe connection: | 89 mm |
| | Electrical data: | |
| | Rated power - P2: | 10 HP |
| | Mains frequency: | 60 Hz |
| | Rated voltage: | 3 x 440-460-480 V |
| | Service factor: | 1.15 |
| | Rated current: | 17.4-16.8-16.6 A |
| | Maximum current consumption: | 17.4 A |
| | Starting current: | 410-440-470 % |
| | Cos phi - power factor: | 0.84-0.83-0.80 |
| | Start. method: | direct-on-line |
| | Enclosure class (IEC 34-5): | IP66 |
| | Built-in temp. transmitter: | yes |
| | Motor No: | 78195012 |
| | Others: | |
| | Minimum efficiency index, MEI \geq : | 0.50 |
| | Net weight: | 172 lb |
| | Gross weight: | 243 lb |
| | Shipping volume: | 11.3 ft ³ |
| | Country of origin: | DK |
| | Custom tariff no.: | 8413.70.2004 |



Company name:

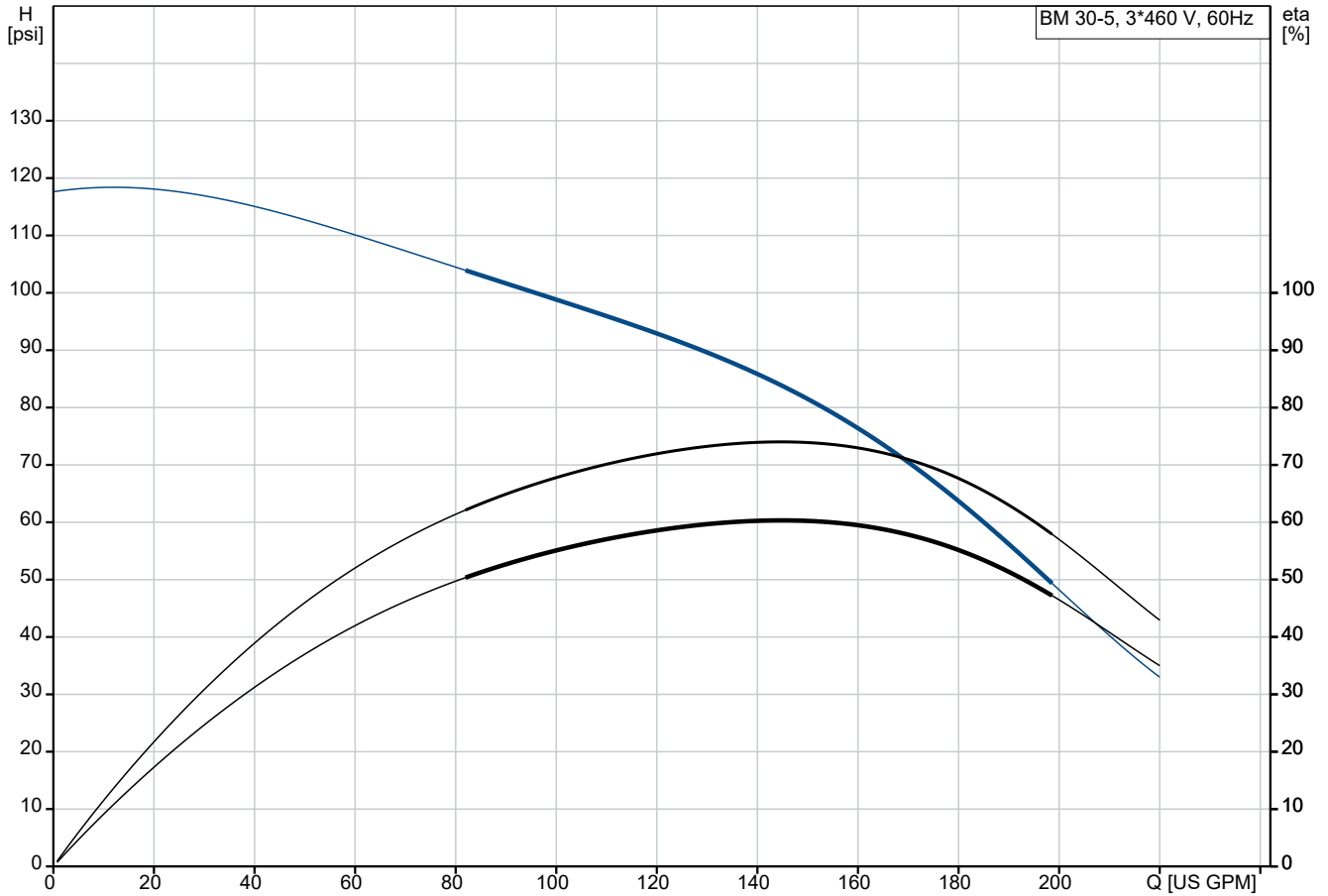
Created by:

Phone:

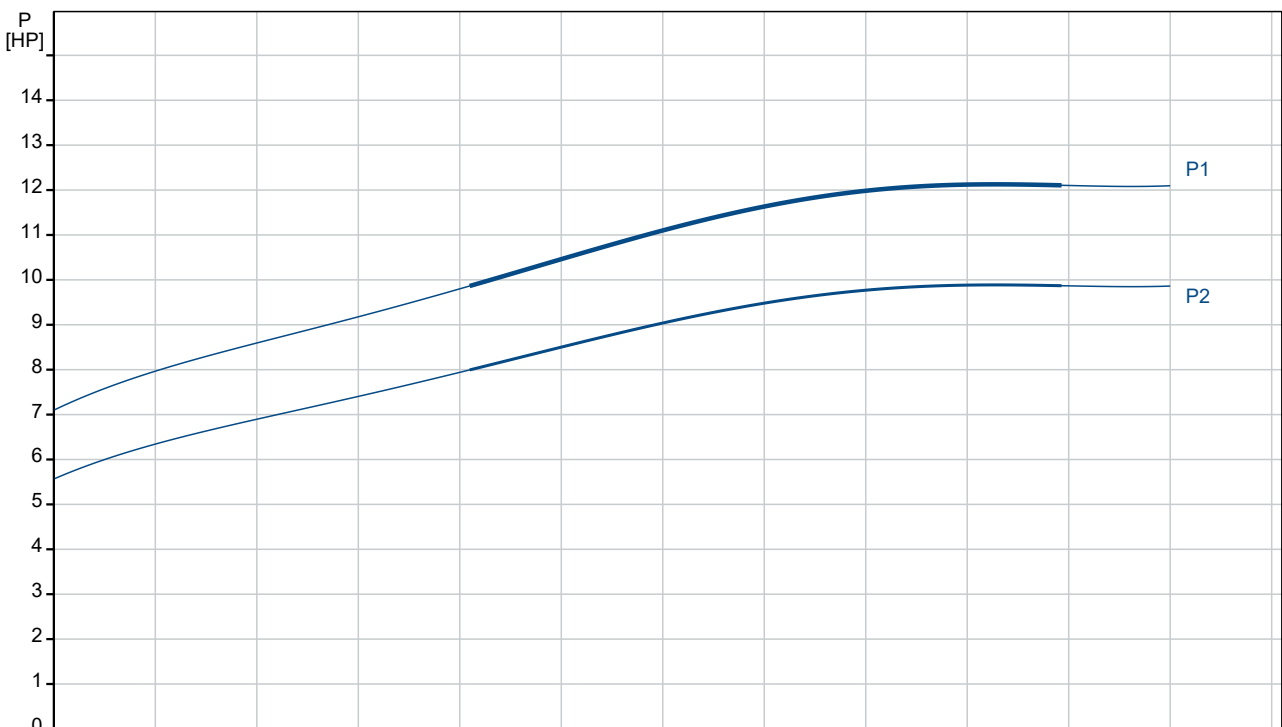
Date:

28/01/2025

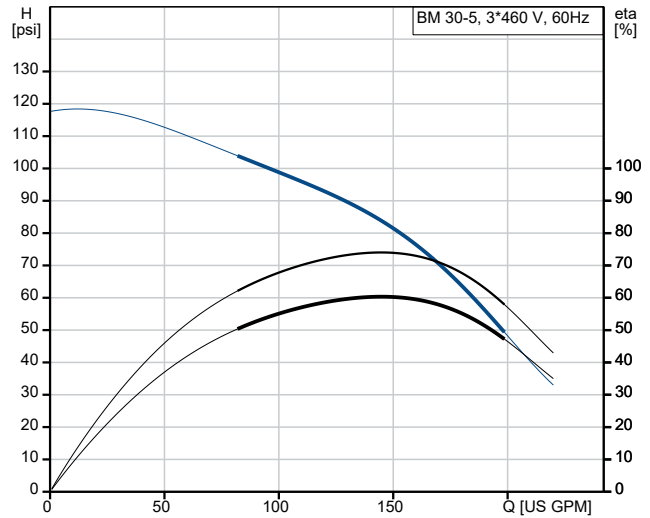
98490832 BM 30-5 NBR 60 Hz



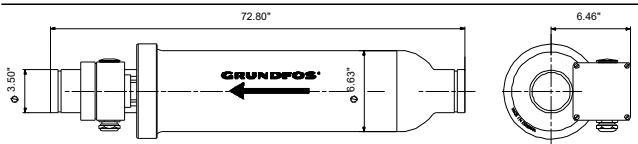
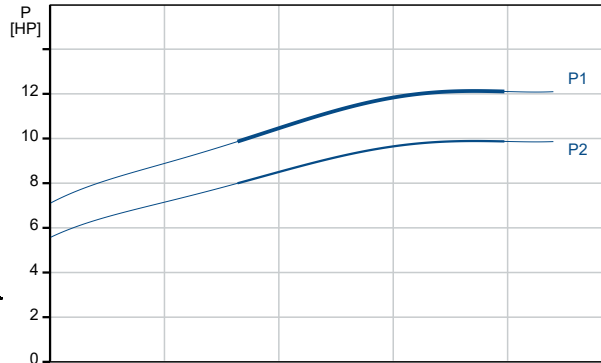
Pumped liquid = Water
Liquid temperature during operation = 68 °F
Density = 62.29 lb/ft³



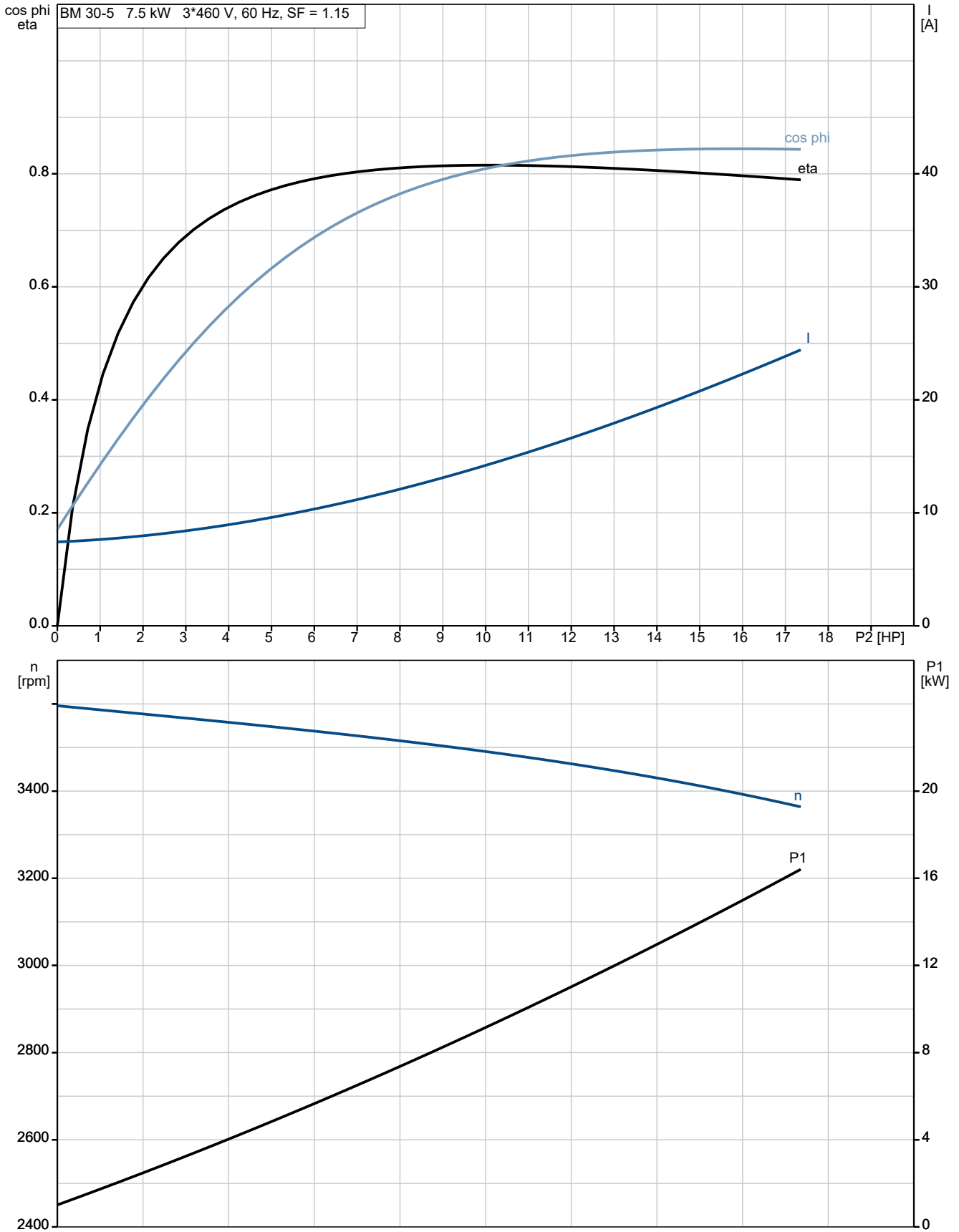
| Description | Value |
|-------------------------------------|--------------------------|
| General information: | |
| Product name: | BM 30-5 NBR |
| Product No: | 98490832 |
| EAN number: | 5711496030567 |
| Technical: | |
| Rated flow: | 159 US GPM |
| Rated head: | 75.25 psi |
| Stages: | 5 |
| Curve tolerance: | ISO9906:2012 3B |
| Model: | E |
| Materials: | |
| Pump: | Stainless steel |
| Pump: | DIN W.-Nr. 1.4301 |
| Pump: | AISI 304 |
| Impeller: | Stainless steel |
| Impeller: | EN 1.4301 |
| Impeller: | AISI 304 |
| Motor: | Stainless steel |
| Motor: | DIN W.-Nr. 1.4301 |
| Motor: | AISI 304 |
| Code for rubber: | NBR |
| Sleeve: | Stainless steel |
| Sleeve: | AISI 304 |
| Sleeve: | EN 1.4301 |
| Installation: | |
| Maximum operating pressure: | 1199.46 psi |
| Maximum permissible inlet pressure: | 725.19 psi |
| Maximum outlet pressure: | 1189.31 psi |
| Pipe connection standard: | PJE |
| Pipe connection: | 89 mm |
| Liquid: | |
| Pumped liquid: | Water |
| Maximum liquid temperature: | 104 °F |
| Selected liquid temperature: | 68 °F |
| Density: | 62.29 lb/ft ³ |
| Electrical data: | |
| Rated power - P2: | 10 HP |
| Mains frequency: | 60 Hz |
| Rated voltage: | 3 x 440-460-480 V |
| Service factor: | 1.15 |
| Rated current: | 17.4-16.8-16.6 A |
| Maximum current consumption: | 17.4 A |
| Starting current: | 410-440-470 % |
| Cos phi - power factor: | 0.84-0.83-0.80 |
| Start. method: | direct-on-line |
| Enclosure class (IEC 34-5): | IP66 |
| Thermal protec: | external |
| Built-in temp. transmitter: | yes |
| Motor No: | 78195012 |
| Others: | |
| Minimum efficiency index, MEI ≥: | 0.50 |
| Net weight: | 172 lb |
| Gross weight: | 243 lb |
| Shipping volume: | 11.3 ft ³ |
| Country of origin: | DK |
| Custom tariff no.: | 8413.70.2004 |



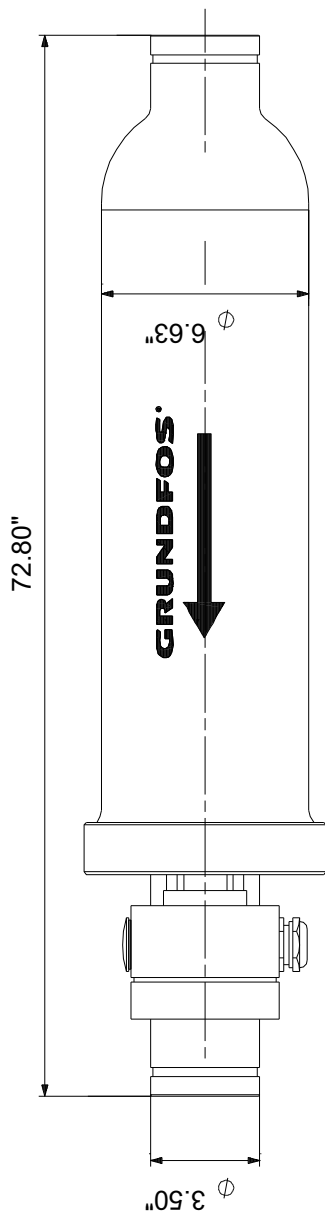
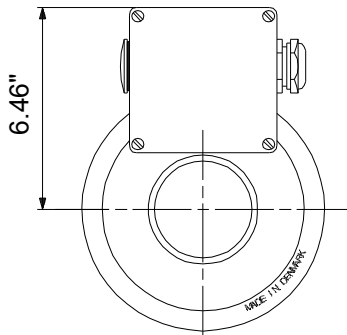
Pumped liquid = Water
 Liquid temperature during operation = 68 °F
 Density = 62.29 lb/ft³



98490832 BM 30-5 NBR 60 Hz



98490832 BM 30-5 NBR 60 Hz



Note! All units are in [in] unless others are stated.
Disclaimer: This simplified dimensional drawing does not show all details.