

Qty.	Description
------	-------------

1	BM 30-8 NBR
---	-------------



Note! Product picture may differ from actual product

Product No.: [98490834](#)

BM is an encapsulated submersible pump that is suitable for applications where a high pressure is required. Therefore, BM is ideal for water treatment, liquid transfer, pressure boosting and closed circulation systems with a high static pressure.

BM pumps are available in four different versions (standard, N-version, NE-version, and R-version), in various sizes, and with a large variety in the number of impellers.

The range covers BM 3A to BM 215, a total of twelve sizes.

Depending on its size and frequency, a BM pump can reach a flow rate of 265 or 310 m<sup>3</sup>/h.

BM pumps can increase the system pressure up to 82.7 bar.

The pump is supplied with an asynchronous motor, Victaulic connections, a straight or 90° bent pipe for BM 3A, BM 5A and BM 9 pumps and a straight pipe for BM 18 and above.

The motor is protected by output filters against overvoltage and increased operating temperature.

As a result, BM is very reliable and durable.

The compact design ensures easy maintenance and alignment of the pump.

The stainless-steel pump and motor housing ensure an excellent resistance against different types of liquids. The R-version is designed to be highly efficient against corrosive liquids.

Three different types of asynchronous motors are available for BM pumps: MS 4000, MS 6000 and MMS 8000.

The enclosure class is IP68.

The motor power ranges from 0.75 to 92 kW.

The motor is controlled by a frequency converter and protected by Pt100 sensors.

The frequency converter is sold as a separate accessory and must be purchased along with the pump.

We recommend a Grundfos CUE frequency converter; however, frequency converters from alternative suppliers can be used as well.

Liquid:

Pumped liquid:	Water
Maximum liquid temperature:	104 °F
Selected liquid temperature:	68 °F
Density:	62.29 lb/ft <sup>3</sup>

Technical:

Rated flow:	159 US GPM
Rated head:	122.1 psi
Curve tolerance:	ISO9906:2012 3B

Materials:

Pump:	Stainless steel
	DIN W.-Nr. 1.4301
	AISI 304
Impeller:	Stainless steel
	EN 1.4301
	AISI 304



Company name:

Created by:

Phone:

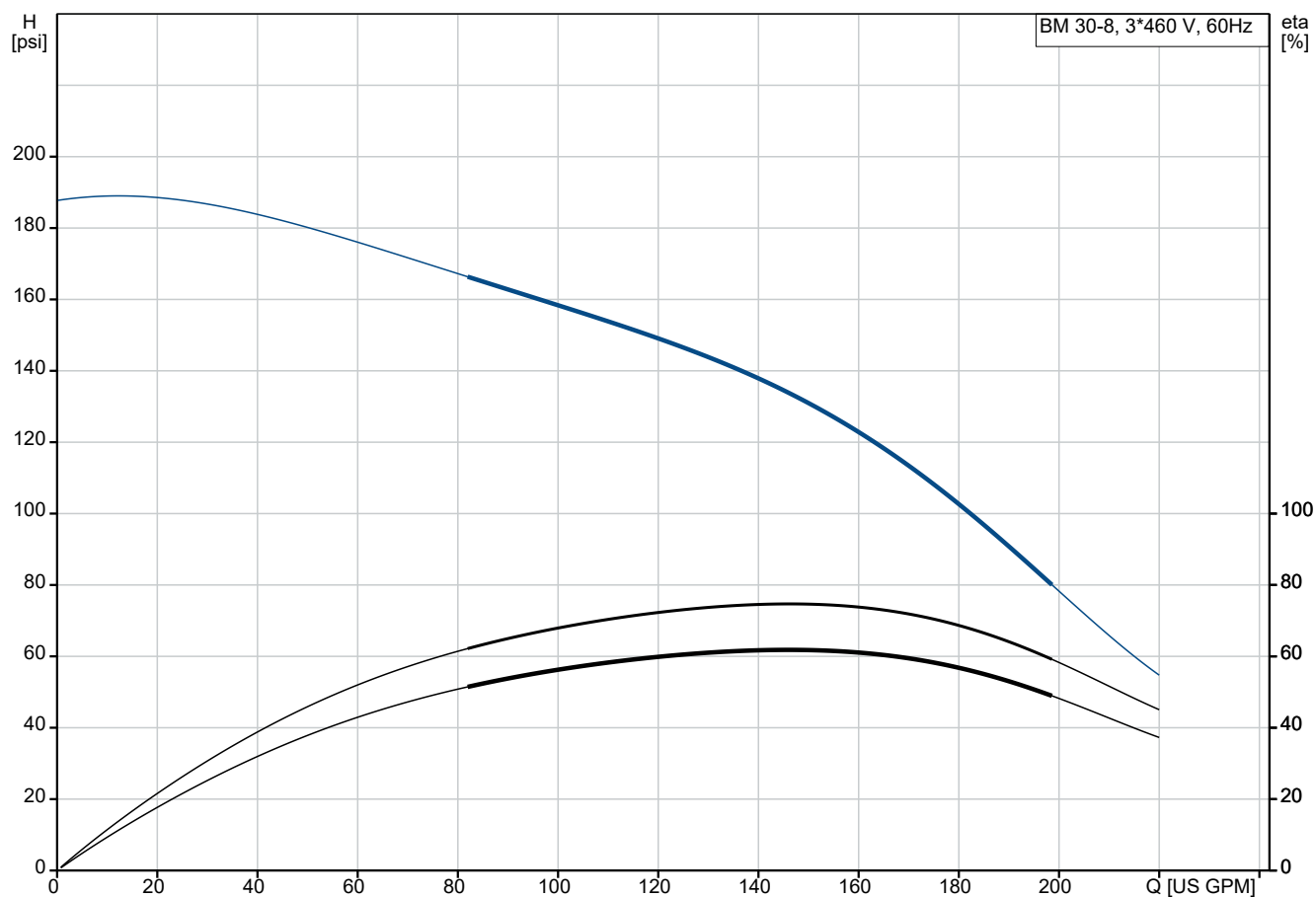
Date:

28/01/2025

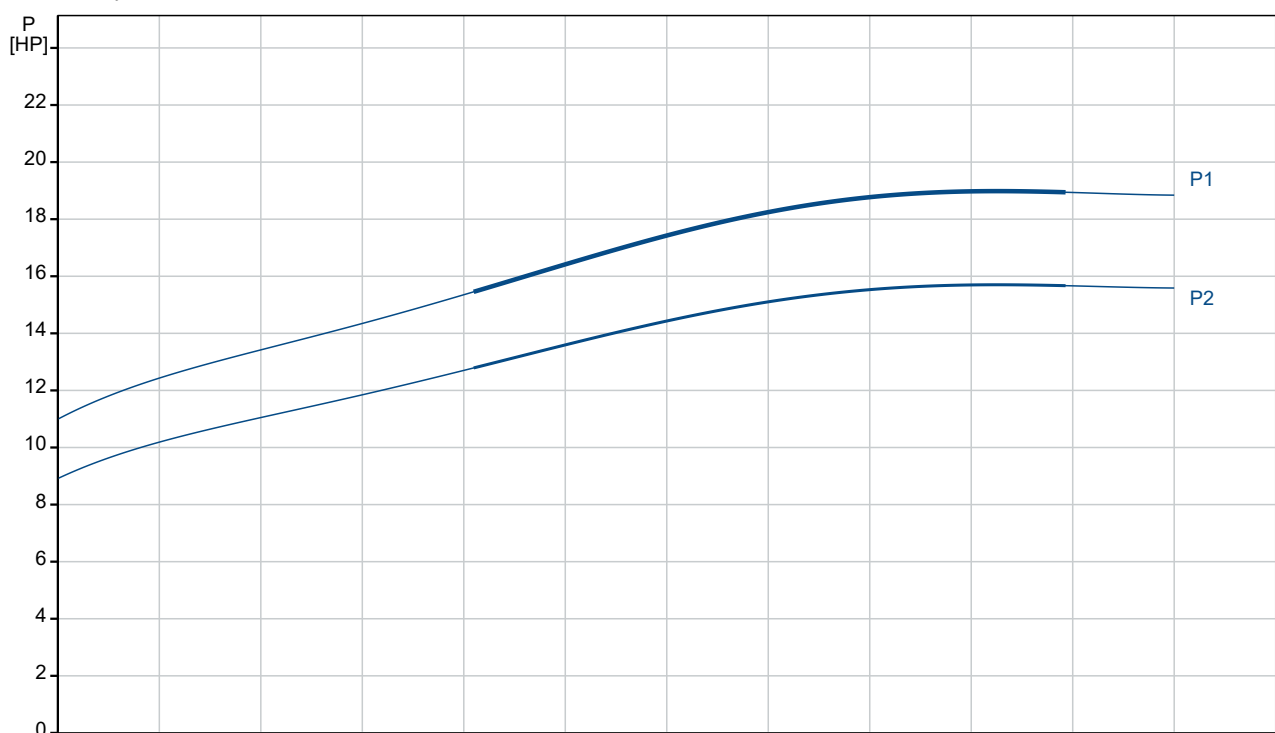
Qty.	Description
------	-------------

1	<div>Motor: Stainless steel DIN W.-Nr. 1.4301 AISI 304</div> <div>Sleeve: Stainless steel AISI 304 EN 1.4301</div> <div>Installation: Maximum operating pressure: 1199.46 psi Maximum permissible inlet pressure: 725.19 psi Maximum outlet pressure: 1189.31 psi Pipe connection standard: PJE Pipe connection: 89 mm</div> <div>Electrical data: Rated power - P2: 15 HP Mains frequency: 60 Hz Rated voltage: 3 x 440-460-480 V Service factor: 1.15 Rated current: 25.0-24.4-24.0 A Maximum current consumption: 25 A Starting current: 420-460-490 % Cos phi - power factor: 0.84-0.83-0.80 Start. method: direct-on-line Enclosure class (IEC 34-5): IP66 Built-in temp. transmitter: yes Motor No: 78195014</div> <div>Others: Minimum efficiency index, MEI ≥: 0.50 Net weight: 212 lb Gross weight: 298 lb Shipping volume: 13.2 ft³</div>
---	---

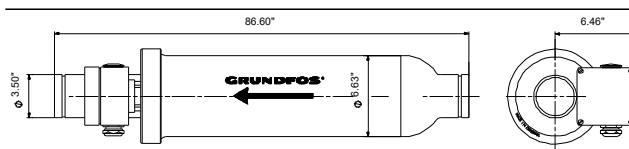
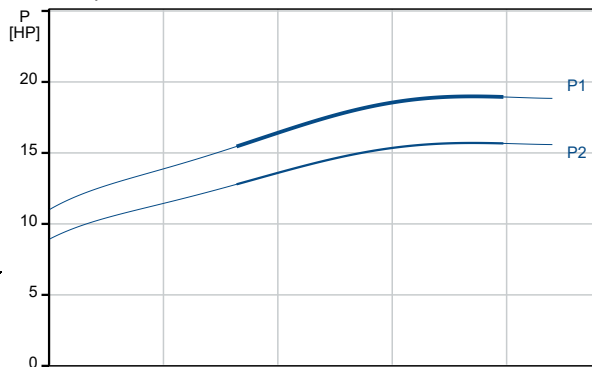
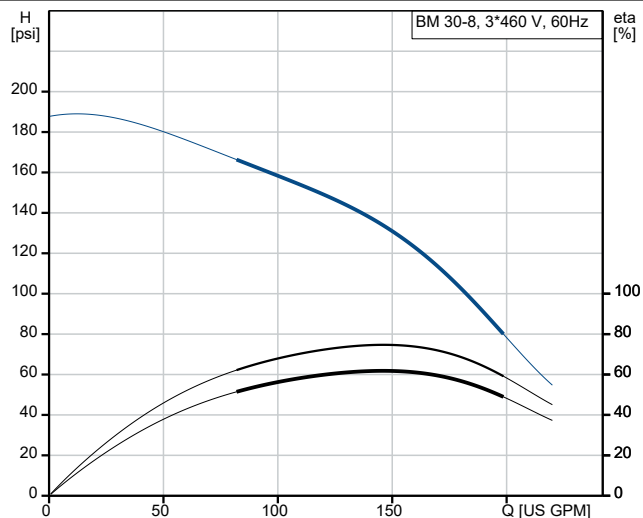
## 98490834 BM 30-8 NBR 60 Hz



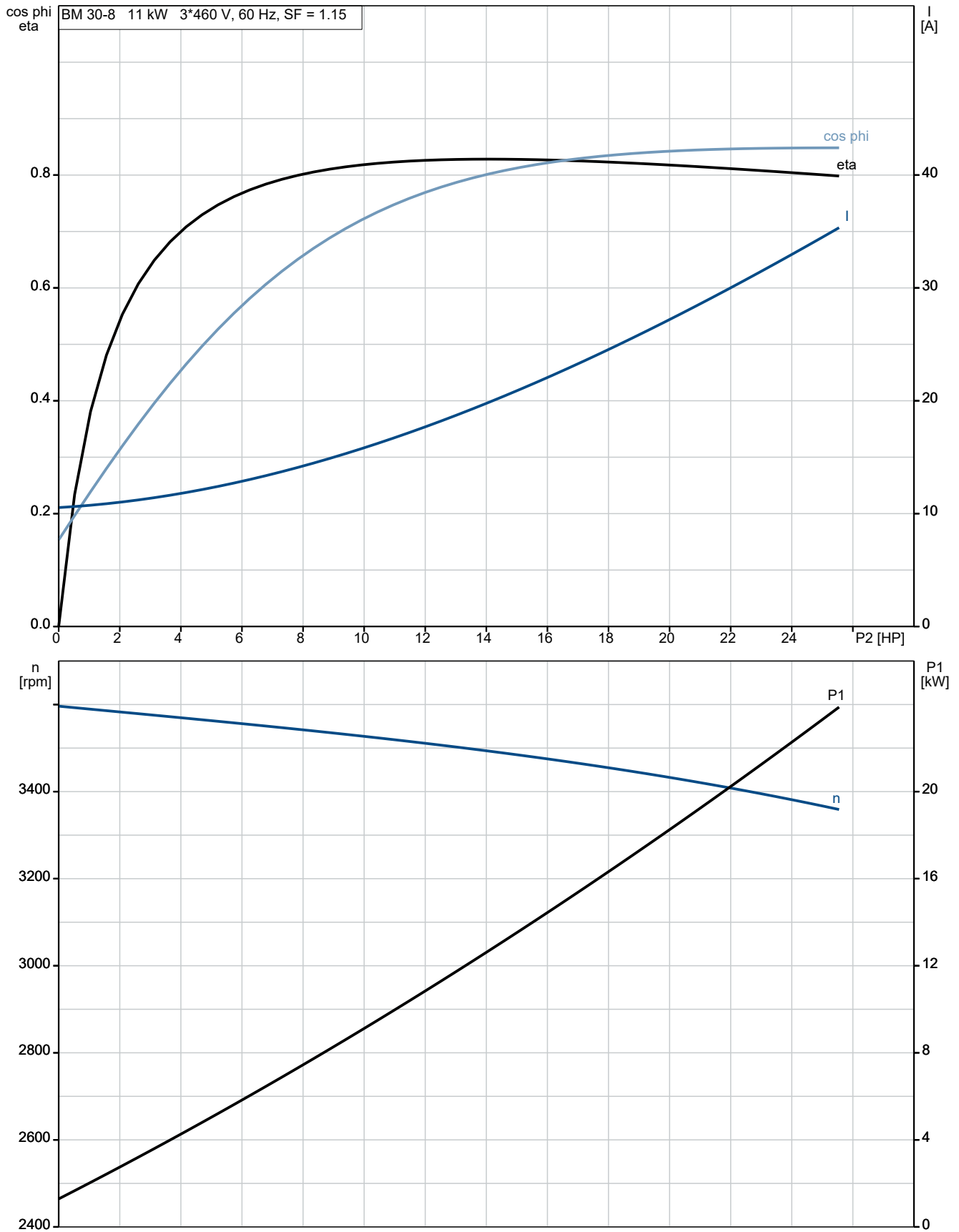
Pumped liquid = Water  
 Liquid temperature during operation = 68 °F  
 Density = 62.29 lb/ft³



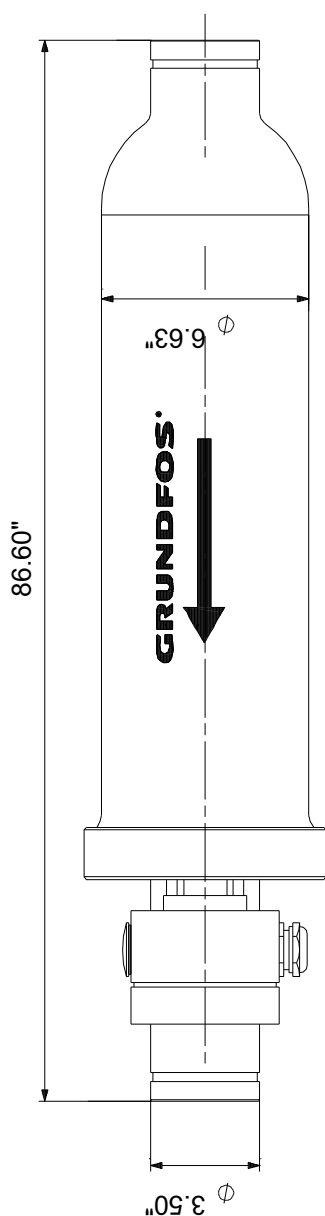
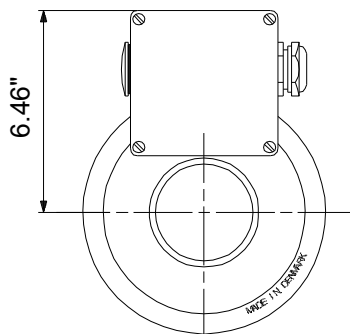
Description	Value
<b>General information:</b>	
Product name:	BM 30-8 NBR
Product No:	98490834
EAN number:	5711496030581
<b>Technical:</b>	
Rated flow:	159 US GPM
Rated head:	122.1 psi
Stages:	8
Curve tolerance:	ISO9906:2012 3B
Model:	E
<b>Materials:</b>	
Pump:	Stainless steel
Pump:	DIN W.-Nr. 1.4301
Pump:	AISI 304
Impeller:	Stainless steel
Impeller:	EN 1.4301
Impeller:	AISI 304
Motor:	Stainless steel
Motor:	DIN W.-Nr. 1.4301
Motor:	AISI 304
Code for rubber:	NBR
Sleeve:	Stainless steel
Sleeve:	AISI 304
Sleeve:	EN 1.4301
<b>Installation:</b>	
Maximum operating pressure:	1199.46 psi
Maximum permissible inlet pressure:	725.19 psi
Maximum outlet pressure:	1189.31 psi
Pipe connection standard:	PJE
Pipe connection:	89 mm
<b>Liquid:</b>	
Pumped liquid:	Water
Maximum liquid temperature:	104 °F
Selected liquid temperature:	68 °F
Density:	62.29 lb/ft³
<b>Electrical data:</b>	
Rated power - P2:	15 HP
Mains frequency:	60 Hz
Rated voltage:	3 x 440-460-480 V
Service factor:	1.15
Rated current:	25.0-24.4-24.0 A
Maximum current consumption:	25 A
Starting current:	420-460-490 %
Cos phi - power factor:	0.84-0.83-0.80
Start. method:	direct-on-line
Enclosure class (IEC 34-5):	IP66
Thermal protec:	external
Built-in temp. transmitter:	yes
Motor No:	78195014
<b>Others:</b>	
Minimum efficiency index, MEI ≥:	0.50
Net weight:	212 lb
Gross weight:	298 lb
Shipping volume:	13.2 ft³



## 98490834 BM 30-8 NBR 60 Hz



## 98490834 BM 30-8 NBR 60 Hz



Note! All units are in [in] unless others are stated.  
Disclaimer: This simplified dimensional drawing does not show all details.