

Qty.	Description
------	-------------

1	BM 125-3 NBR
---	--------------



Note! Product picture may differ from actual product

Product No.: [17DS3603](#)

BM is an encapsulated submersible pump that is suitable for applications where a high pressure is required. Therefore, BM is ideal for water treatment, liquid transfer, pressure boosting and closed circulation systems with a high static pressure.

BM pumps are available in four different versions (standard, N-version, NE-version, and R-version), in various sizes, and with a large variety in the number of impellers.

The range covers BM 3A to BM 215, a total of twelve sizes.

Depending on its size and frequency, a BM pump can reach a flow rate of 265 or 310 m³/h.

BM pumps can increase the system pressure up to 82.7 bar.

The pump is supplied with an asynchronous motor, Victaulic connections, a straight or 90° bent pipe for BM 3A, BM 5A and BM 9 pumps and a straight pipe for BM 18 and above.

The motor is protected by output filters against overvoltage and increased operating temperature.

As a result, BM is very reliable and durable.

The compact design ensures easy maintenance and alignment of the pump.

The stainless-steel pump and motor housing ensure an excellent resistance against different types of liquids. The R-version is designed to be highly efficient against corrosive liquids.

Three different types of asynchronous motors are available for BM pumps: MS 4000, MS 6000 and MMS 8000.

The enclosure class is IP68.

The motor power ranges from 0.75 to 92 kW.

The motor is controlled by a frequency converter and protected by Pt100 sensors.

The frequency converter is sold as a separate accessory and must be purchased along with the pump.

We recommend a Grundfos CUE frequency converter; however, frequency converters from alternative suppliers can be used as well.

Liquid:

Pumped liquid:	Water
Maximum liquid temperature:	113 °F
Selected liquid temperature:	68 °F
Density:	62.29 lb/ft ³

Technical:

Rated flow:	656 US GPM
Rated head:	282.2 ft
Curve tolerance:	ISO9906:2012 3B

Materials:

Pump:	Stainless steel
	DIN W.-Nr. 1.4301
	AISI 304
Impeller:	Stainless steel
	EN 1.4301
	AISI 304



Company name:

Created by:

Phone:

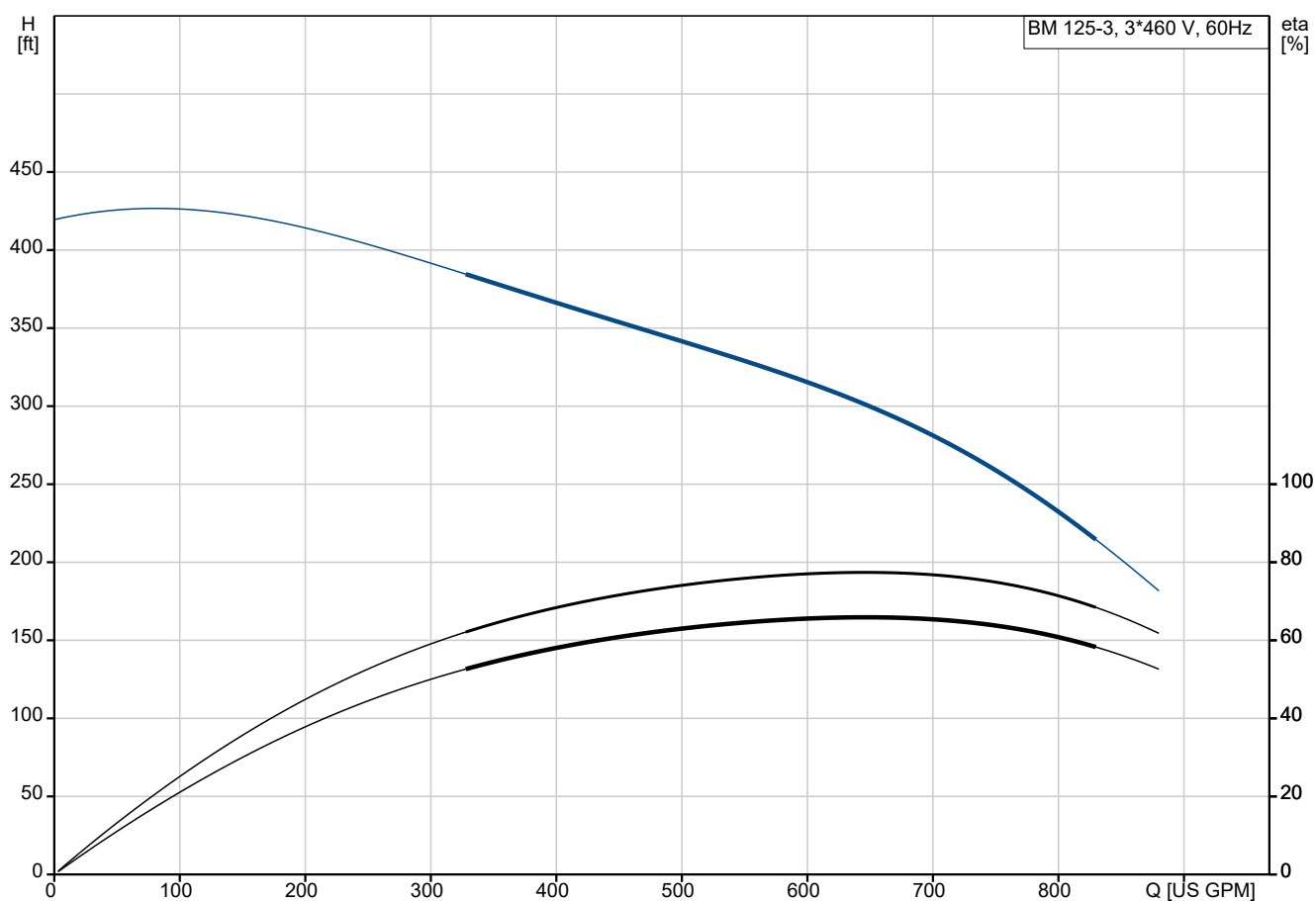
Date:

18/02/2025

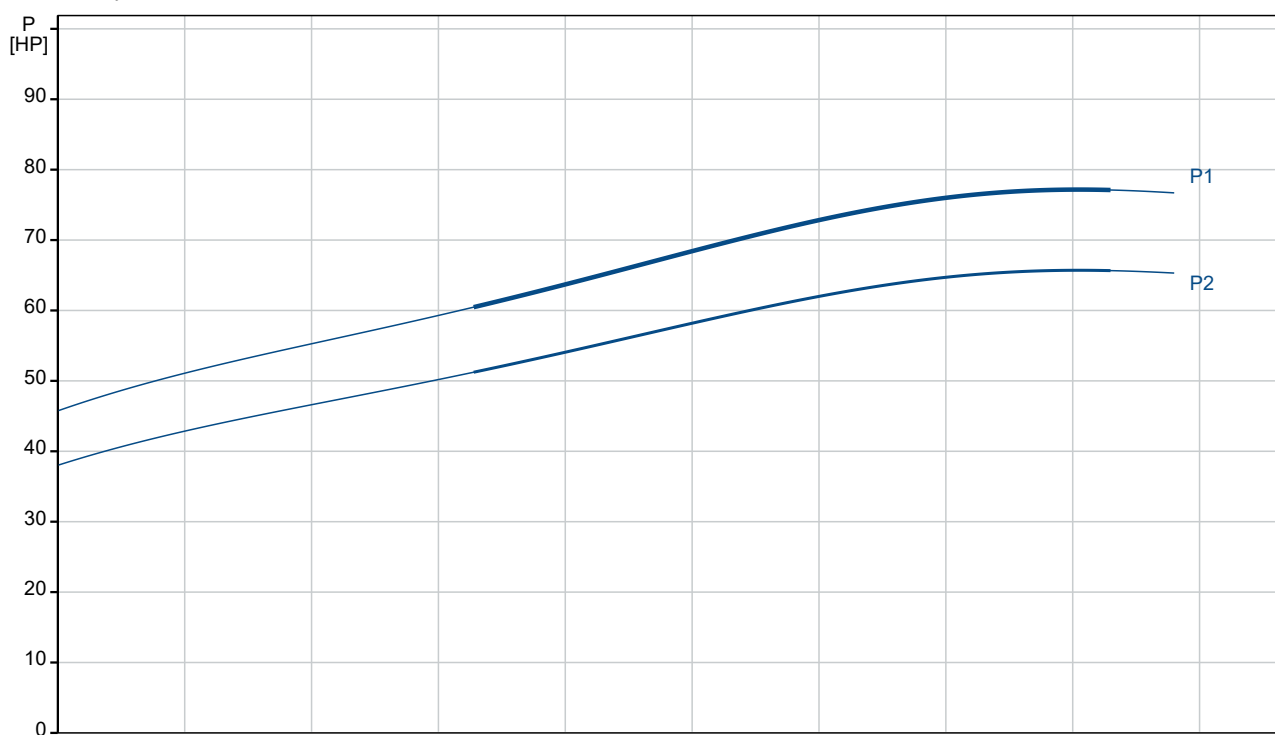
Qty.	Description
------	-------------

1	Motor: Cast iron DIN W.-Nr. 0.6025 Sleeve: Stainless steel AISI 304 EN 1.4301 Installation: Maximum operating pressure: 1199.46 psi Maximum permissible inlet pressure: 362.59 psi Maximum outlet pressure: 1189.31 psi Pipe connection standard: PJE Pipe connection: 168 mm Electrical data: Rated power - P2: 60 HP Mains frequency: 60 Hz Rated voltage: 3 x 460 V Service factor: 1.15 Rated current: 93 A Starting current: 640 % Cos phi - power factor: 0.87 Start. method: direct-on-line Enclosure class (IEC 34-5): IP66 Built-in temp. transmitter: no Motor No: 96476891 Others: Minimum efficiency index, MEI ≥: -- Net weight: 688 lb Gross weight: 884 lb Shipping volume: 42.4 ft³ Country of origin: DK Custom tariff no.: 8413.70.2004
---	--

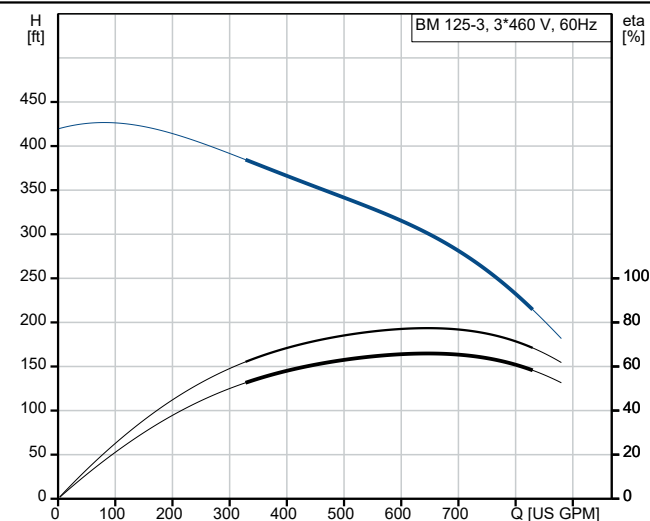
17DS3603 BM 125-3 NBR 60 Hz



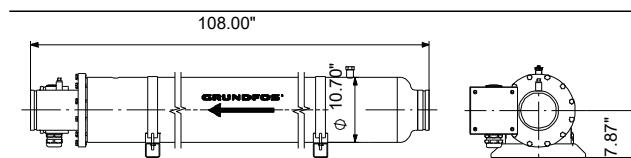
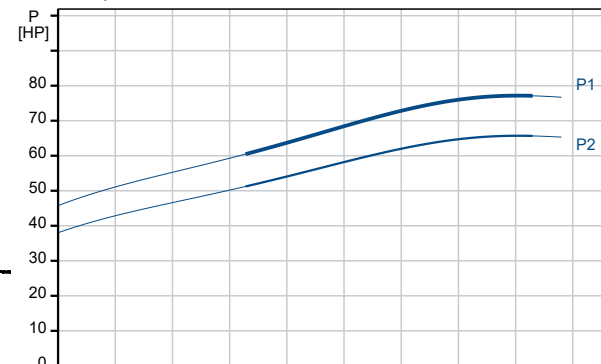
Pumped liquid = Water
 Liquid temperature during operation = 68 °F
 Density = 62.29 lb/ft³



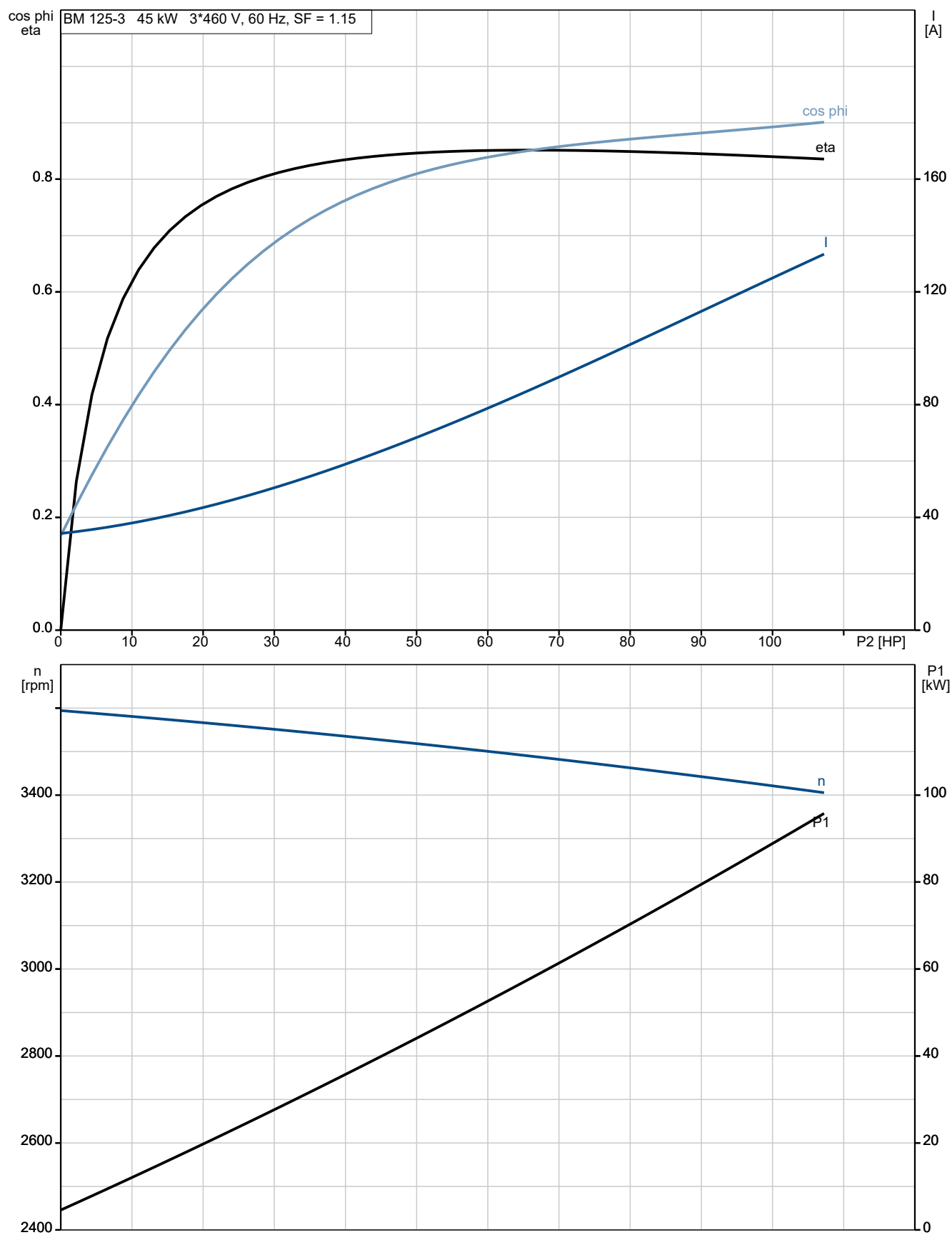
Description	Value
General information:	
Product name:	BM 125-3 NBR
Product No:	17DS3603
EAN number:	5711492337516
Technical:	
Rated flow:	656 US GPM
Rated head:	282.2 ft
Stages:	3
Curve tolerance:	ISO9906:2012 3B
Model:	D
Materials:	
Pump:	Stainless steel
	DIN W.-Nr. 1.4301
	AISI 304
Impeller:	Stainless steel
	EN 1.4301
	AISI 304
Motor:	Cast iron
	DIN W.-Nr. 0.6025
Code for rubber:	NBR
Sleeve:	Stainless steel
	AISI 304
	EN 1.4301
Installation:	
Maximum operating pressure:	1199.46 psi
Maximum permissible inlet pressure:	362.59 psi
Maximum outlet pressure:	1189.31 psi
Pipe connection standard:	PJE
Pipe connection:	168 mm
Liquid:	
Pumped liquid:	Water
Maximum liquid temperature:	113 °F
Selected liquid temperature:	68 °F
Density:	62.29 lb/ft³
Electrical data:	
Rated power - P2:	60 HP
Mains frequency:	60 Hz
Rated voltage:	3 x 460 V
Service factor:	1.15
Rated current:	93 A
Starting current:	640 %
Cos phi - power factor:	0.87
Start. method:	direct-on-line
Enclosure class (IEC 34-5):	IP66
Thermal protec:	external
Built-in temp. transmitter:	no
Motor No:	96476891
Others:	
Minimum efficiency index, MEI ≥:	---
Net weight:	688 lb
Gross weight:	884 lb
Shipping volume:	42.4 ft³
Country of origin:	DK
Custom tariff no.:	8413.70.2004



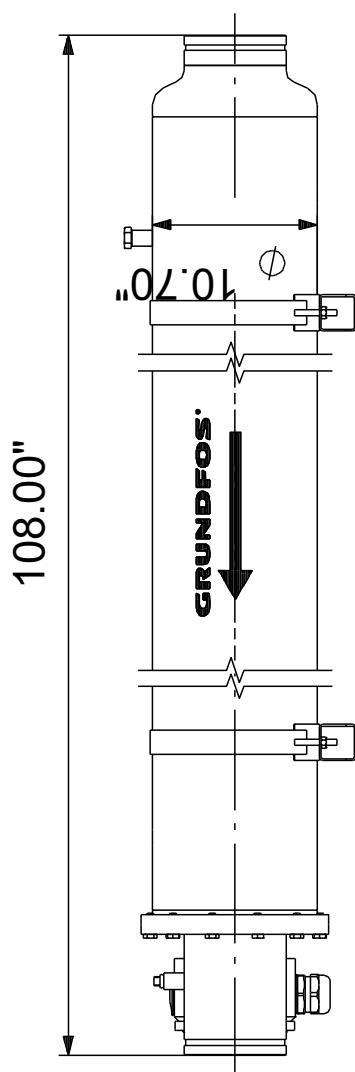
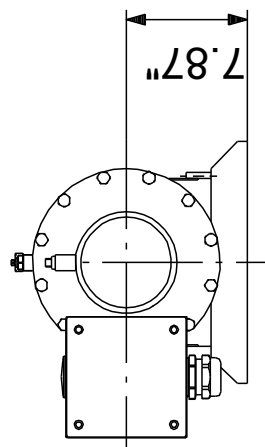
Pumped liquid = Water
Liquid temperature during operation = 68 °F
Density = 62.29 lb/ft³



17DS3603 BM 125-3 NBR 60 Hz



17DS3603 BM 125-3 NBR 60 Hz



Note! All units are in [in] unless others are stated.
Disclaimer: This simplified dimensional drawing does not show all details.