

Qty. Description

1 **BM 160-3 NBR**



Note! Product picture may differ from actual product

Product No.: [20DS36A3](#)

BM is an encapsulated submersible pump that is suitable for applications where a high pressure is required. Therefore, BM is ideal for water treatment, liquid transfer, pressure boosting and closed circulation systems with a high static pressure.

BM pumps are available in four different versions (standard, N-version, NE-version, and R-version), in various sizes, and with a large variety in the number of impellers.

The range covers BM 3A to BM 215, a total of twelve sizes.

Depending on its size and frequency, a BM pump can reach a flow rate of 265 or 310 m³/h.

BM pumps can increase the system pressure up to 82.7 bar.

The pump is supplied with an asynchronous motor, Victaulic connections, a straight or 90° bent pipe for BM 3A, BM 5A and BM 9 pumps and a straight pipe for BM 18 and above.

The motor is protected by output filters against overvoltage and increased operating temperature.

As a result, BM is very reliable and durable.

The compact design ensures easy maintenance and alignment of the pump.

The stainless-steel pump and motor housing ensure an excellent resistance against different types of liquids. The R-version is designed to be highly efficient against corrosive liquids.

Three different types of asynchronous motors are available for BM pumps: MS 4000, MS 6000 and MMS 8000.

The enclosure class is IP68.

The motor power ranges from 0.75 to 92 kW.

The motor is controlled by a frequency converter and protected by Pt100 sensors.

The frequency converter is sold as a separate accessory and must be purchased along with the pump.

We recommend a Grundfos CUE frequency converter; however, frequency converters from alternative suppliers can be used as well.

Liquid:

Pumped liquid:	Water
Maximum liquid temperature:	113 °F
Selected liquid temperature:	68 °F
Density:	62.29 lb/ft ³

Technical:

Rated flow:	845 US GPM
Rated head:	120.7 psi
Curve tolerance:	ISO9906:2012 3B

Materials:

Pump:	Stainless steel DIN W.-Nr. 1.4301 AISI 304
Impeller:	Stainless steel EN 1.4301 AISI 304



Company name:

Created by:

Phone:

Date:

24/02/2025

Qty. Description

1	Motor:	Cast iron DIN W.-Nr. 0.6025
	Sleeve:	Stainless steel AISI 304 EN 1.4301
	Installation:	
	Maximum operating pressure:	1199.46 psi
	Maximum permissible inlet pressure:	362.59 psi
	Maximum outlet pressure:	1189.31 psi
	Pipe connection standard:	PJE
	Pipe connection:	168 mm
	Electrical data:	
	Rated power - P2:	75 HP
	Mains frequency:	60 Hz
	Rated voltage:	3 x 460 V
	Service factor:	1.15
	Rated current:	112 A
	Starting current:	580 %
	Cos phi - power factor:	0.87
	Start. method:	direct-on-line
	Enclosure class (IEC 34-5):	IP66
	Built-in temp. transmitter:	no
	Motor No:	96476892
	Others:	
	Minimum efficiency index, MEI ≥:	-.--
	Net weight:	741 lb
	Gross weight:	969 lb
	Shipping volume:	42.4 ft ³
	Country of origin:	DK
	Custom tariff no.:	8413.70.2004



Company name:

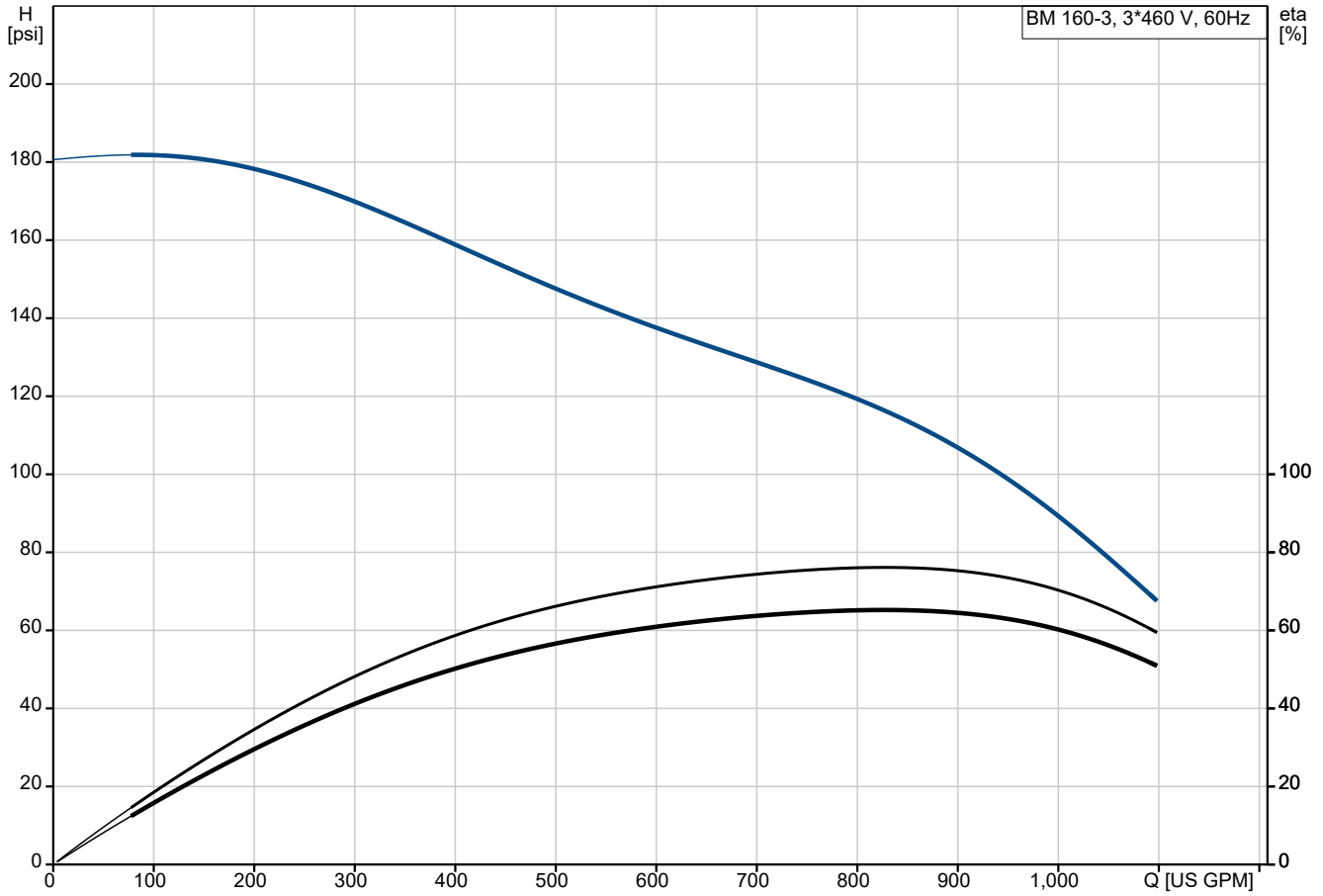
Created by:

Phone:

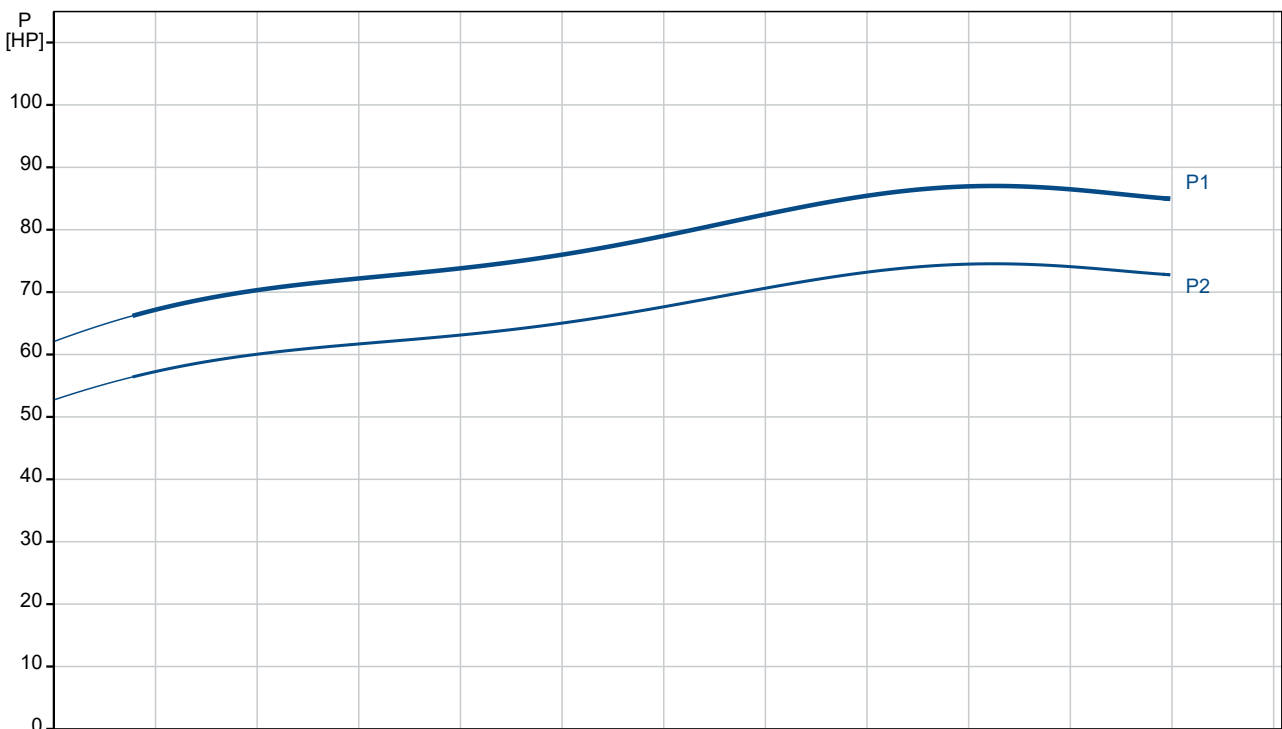
Date:

24/02/2025

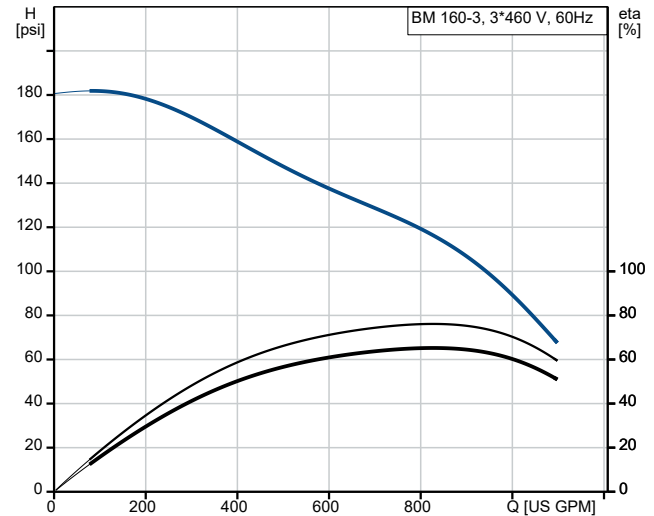
20DS36A3 BM 160-3 NBR 60 Hz



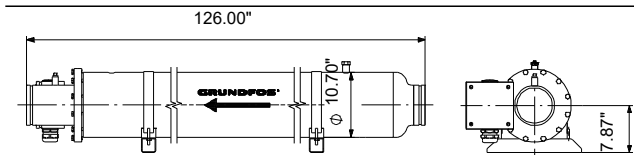
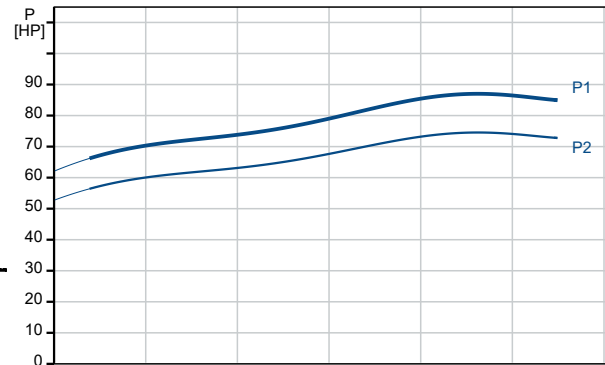
Pumped liquid = Water
Liquid temperature during operation = 68 °F
Density = 62.29 lb/ft³



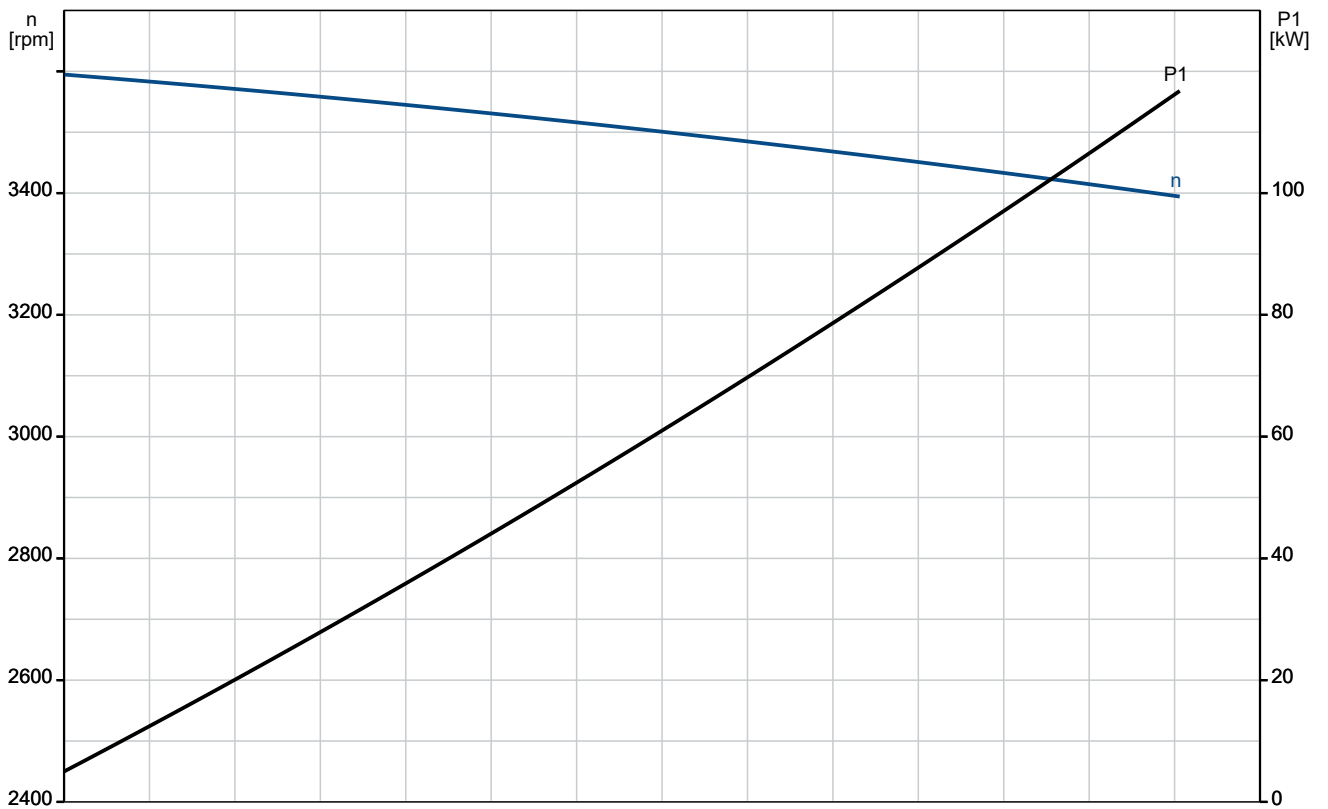
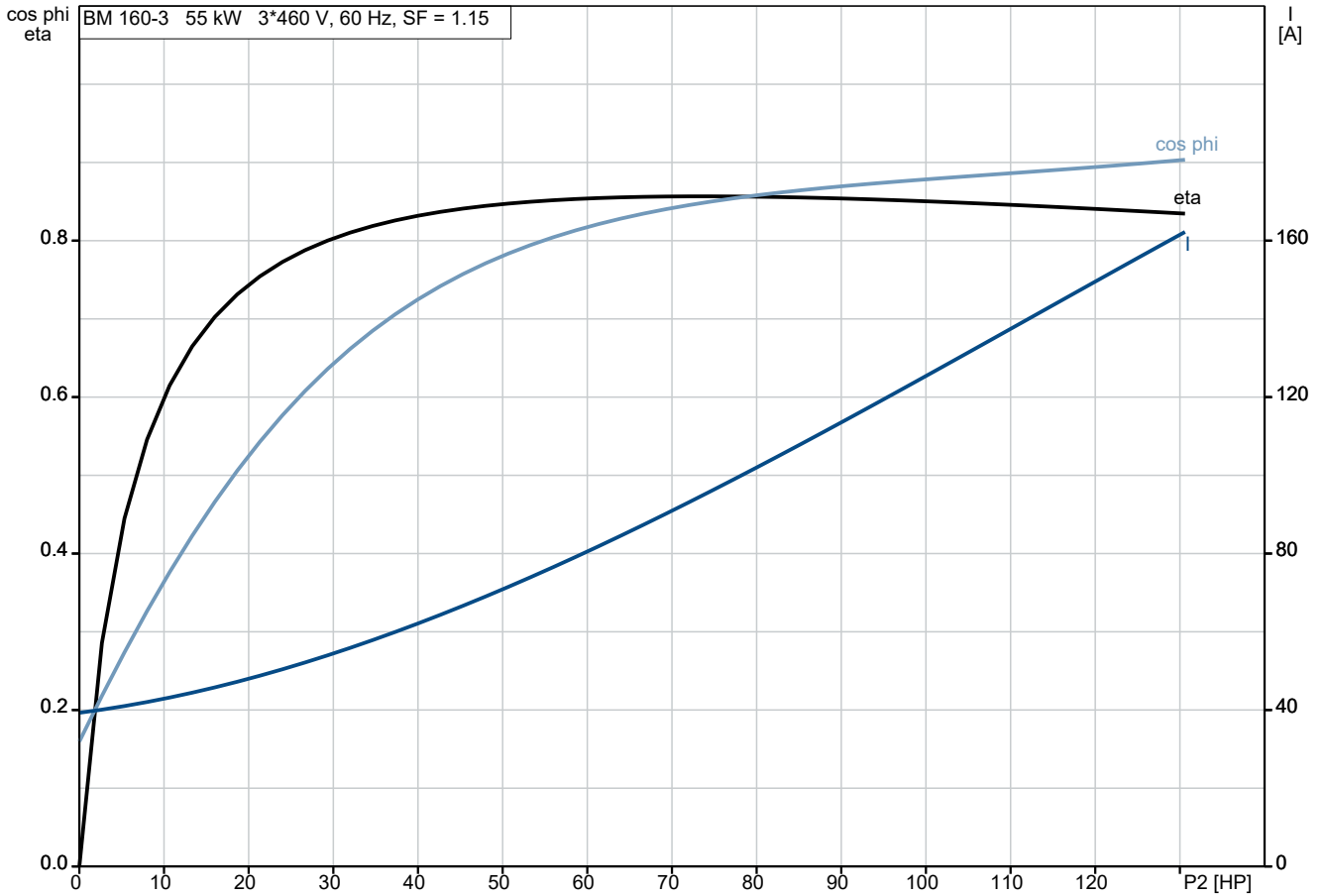
Description	Value
General information:	
Product name:	BM 160-3 NBR
Product No:	20DS36A3
EAN number:	5711492337578
Technical:	
Rated flow:	845 US GPM
Rated head:	120.7 psi
Stages:	3
Curve tolerance:	ISO9906:2012 3B
Model:	D
Materials:	
Pump:	Stainless steel
	DIN W.-Nr. 1.4301
	AISI 304
Impeller:	Stainless steel
	EN 1.4301
	AISI 304
Motor:	Cast iron
	DIN W.-Nr. 0.6025
Code for rubber:	NBR
Sleeve:	Stainless steel
	AISI 304
	EN 1.4301
Installation:	
Maximum operating pressure:	1199.46 psi
Maximum permissible inlet pressure:	362.59 psi
Maximum outlet pressure:	1189.31 psi
Pipe connection standard:	PJE
Pipe connection:	168 mm
Liquid:	
Pumped liquid:	Water
Maximum liquid temperature:	113 °F
Selected liquid temperature:	68 °F
Density:	62.29 lb/ft ³
Electrical data:	
Rated power - P2:	75 HP
Mains frequency:	60 Hz
Rated voltage:	3 x 460 V
Service factor:	1.15
Rated current:	112 A
Starting current:	580 %
Cos phi - power factor:	0.87
Start. method:	direct-on-line
Enclosure class (IEC 34-5):	IP66
Thermal protec:	external
Built-in temp. transmitter:	no
Motor No:	96476892
Others:	
Minimum efficiency index, MEI ≥:	---
Net weight:	741 lb
Gross weight:	969 lb
Shipping volume:	42.4 ft ³
Country of origin:	DK
Custom tariff no.:	8413.70.2004



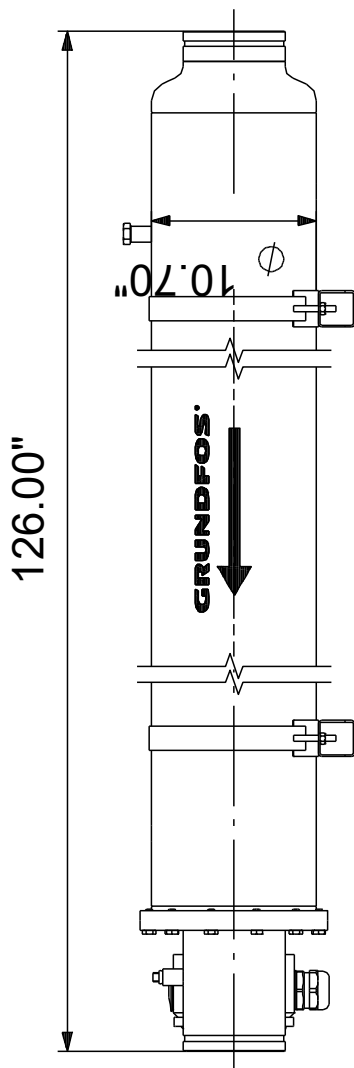
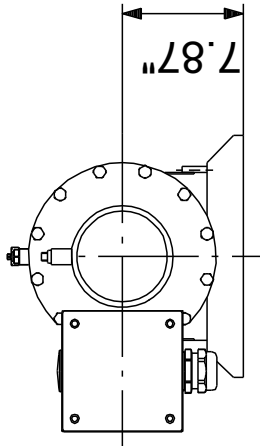
Pumped liquid = Water
 Liquid temperature during operation = 68 °F
 Density = 62.29 lb/ft³



20DS36A3 BM 160-3 NBR 60 Hz



20DS36A3 BM 160-3 NBR 60 Hz



Note! All units are in [in] unless others are stated.
Disclaimer: This simplified dimensional drawing does not show all details.