

Qty.	Description
------	-------------

1	BM hp 18-4-R NBR
---	------------------



Note! Product picture may differ from actual product

Product No.: [93078178](#)

BM hp is an encapsulated submersible pump that is suitable for applications where a high system pressure is required, as it can handle an inlet pressure up to 80 bar.

Therefore, BM hp is ideal for water treatment, liquid transfer, pressure boosting and closed circulation systems with a high static pressure.

BM hp pumps are available in R-version, in various sizes and with a large variety in the number of impellers.

The range covers BM hp 18 to BM hp 215, a total of nine sizes.

Depending on its size and frequency, a BM hp pump can reach a flow rate of 265 or 310 m<sup>3</sup>/h.

BM pumps can increase the system pressure up to 82.7 bar.

The pump is supplied with an asynchronous motor, Victaulic connections and a straight pipe for BM 18 and above.

The motor is protected by output filters against overvoltage and increased operating temperature.

As a result, BM hp is very reliable and durable.

The compact design ensures easy maintenance and alignment of the pump.

The stainless-steel pump and motor housing ensure an excellent resistance against different types of liquids. The R-version is designed to be highly efficient against corrosive liquids.

Two different types of asynchronous motors are available for BM hp pumps: MS 6000 and MMS 8000.

The enclosure class is IP68.

The motor power ranges from 5.5 to 30 kW.

The motor is controlled by a frequency converter and protected by Pt100 sensors.

The frequency converter is sold as a separate accessory and must be purchased along with the pump.

We recommend a Grundfos CUE frequency converter; however, frequency converters from alternative suppliers can be used as well.

**Liquid:**

Pumped liquid: Water

Liquid temperature range: 32 .. 104 °F

Selected liquid temperature: 140 °F

Density: 61.35 lb/ft<sup>3</sup>

**Technical:**

Rated flow: 96.9 US GPM

Rated head: 58.74 psi

Approvals: CE,EAC,UKCA

Curve tolerance: ISO9906:2012 3B

**Materials:**

Pump: Stainless steel

EN 1.4539

AISI 904L



Company name:

Created by:

Phone:

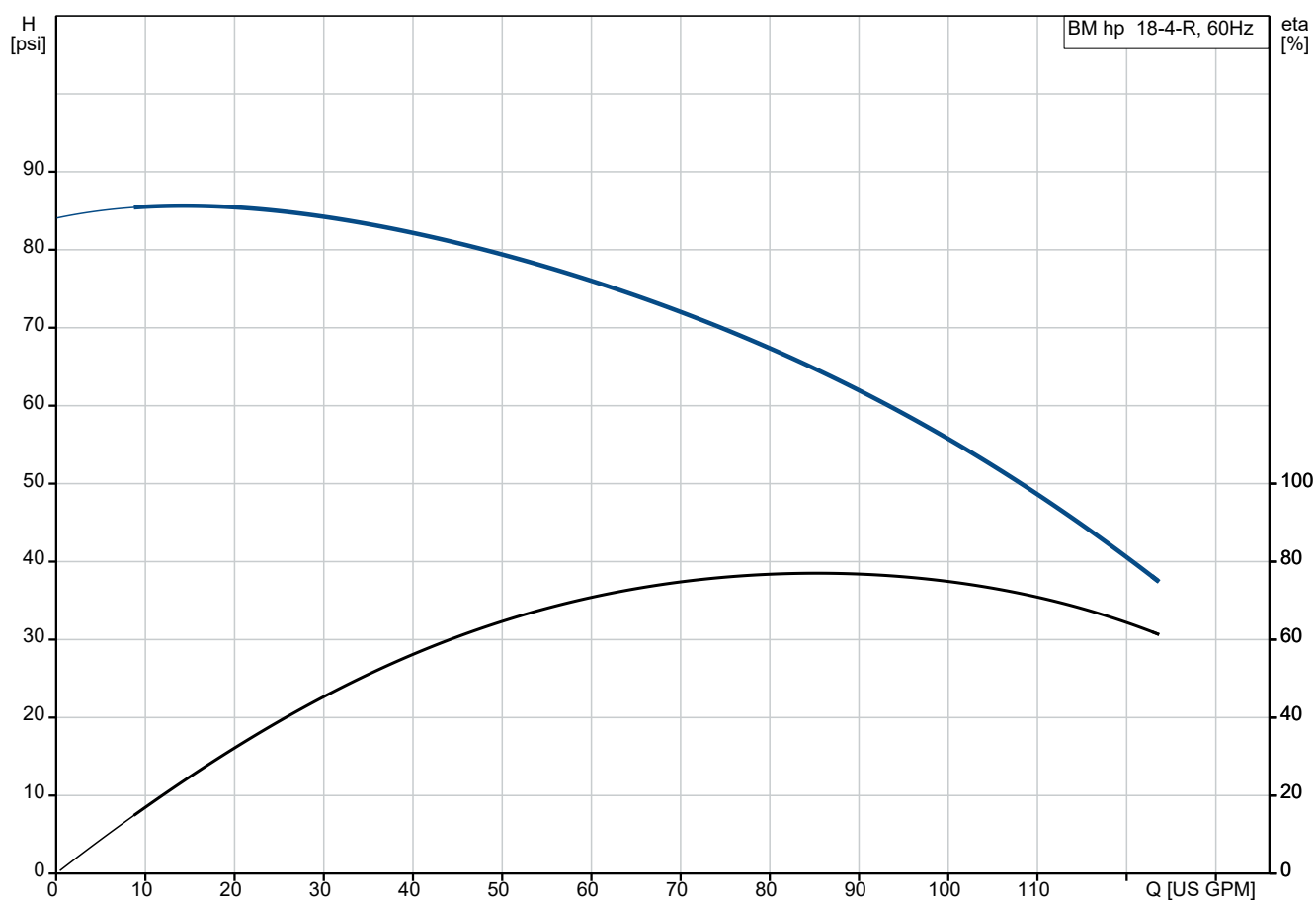
Date:

04/03/2025

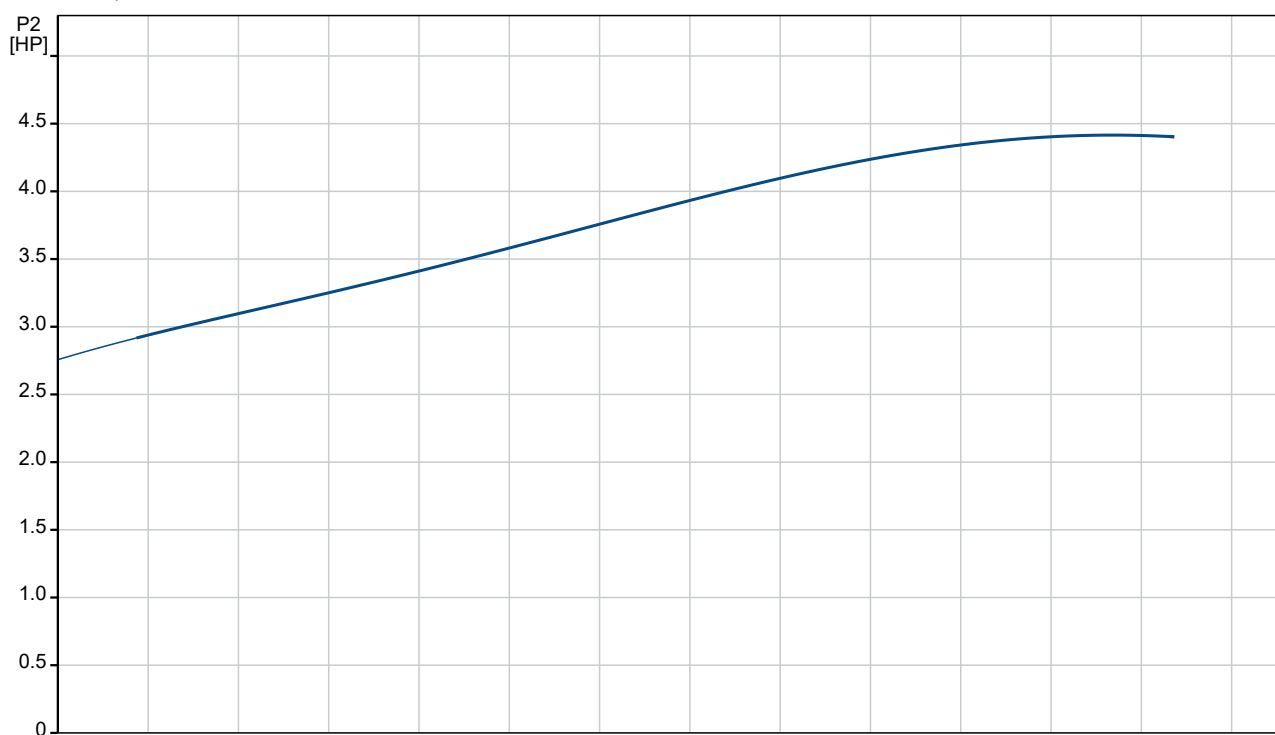
Qty.	Description
------	-------------

1	<div>Impeller: Stainless steel EN 1.4539 AISI 904L</div> <div>Motor: Stainless steel EN 1.4539 AISI 904L</div> <div>Sleeve: Stainless steel SAF 2205 EN 1.4462</div> <div>Installation: Maximum operating pressure: 1199.46 psi Maximum permissible inlet pressure: 1189.31 psi Maximum outlet pressure: 1189.31 psi Type of connection: PJE Size of connection: 88.9</div> <div>Electrical data: Motor standard: IEC Rated power - P2: 7.5 HP Mains frequency: 60 Hz Rated voltage: 3 x 440-480 V Rated current: 13.2 A Rated speed: 3470-3490 rpm Method of start: Direct-on-line (DOL) Enclosure class (IEC 34-5): IP66</div> <div>Others: Minimum efficiency index, MEI ≥: 0.70 Net weight: 181 lb Gross weight: 272 lb Shipping volume: 12.2 ft³</div>
---	---

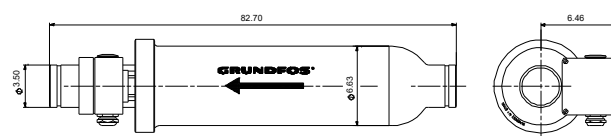
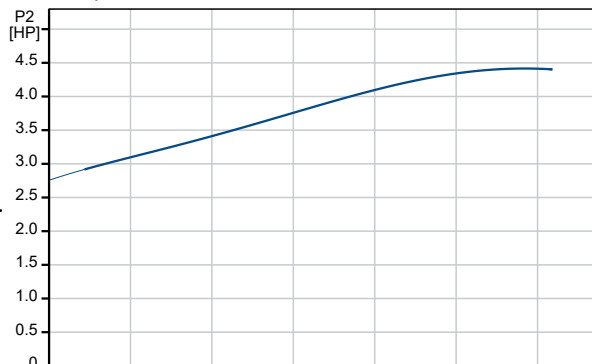
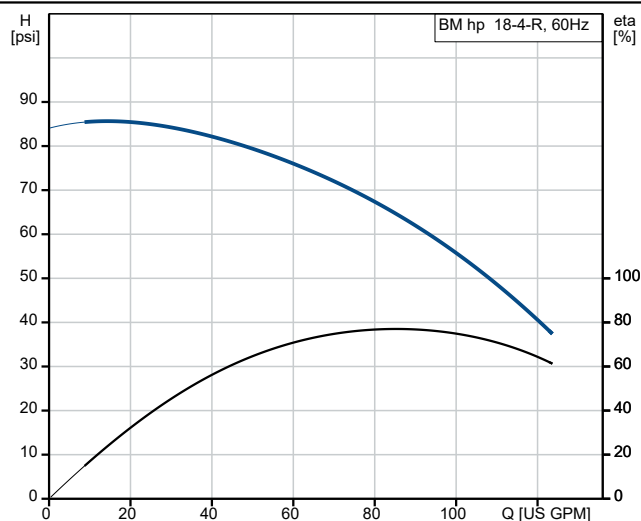
## 93078178 BM hp 18-4-R NBR 60 Hz



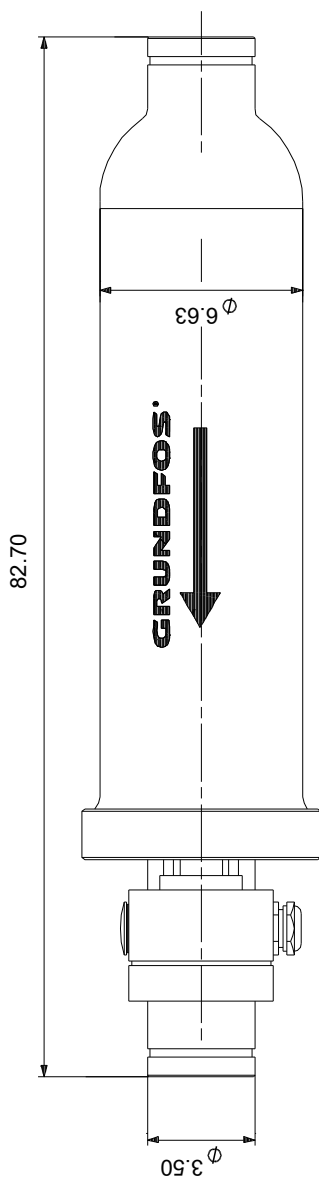
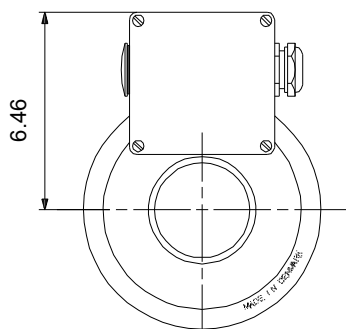
Pumped liquid = Water  
 Liquid temperature during operation = 140 °F  
 Density = 61.35 lb/ft³



Description	Value
<b>General information:</b>	
Product name:	BM hp 18-4-R NBR
Product No:	93078178
EAN number:	5715123518152
<b>Technical:</b>	
Rated flow:	96.9 US GPM
Rated head:	58.74 psi
Stages:	4
Approvals:	CE,EAC,UKCA
Curve tolerance:	ISO9906:2012 3B
Model:	E
<b>Materials:</b>	
Pump:	Stainless steel
	EN 1.4539
	AISI 904L
Impeller:	Stainless steel
	EN 1.4539
	AISI 904L
Motor:	Stainless steel
	EN 1.4539
	AISI 904L
Code for rubber:	NBR
Sleeve:	Stainless steel
	SAF 2205
	EN 1.4462
<b>Installation:</b>	
Maximum operating pressure:	1199.46 psi
Maximum permissible inlet pressure:	1189.31 psi
Maximum outlet pressure:	1189.31 psi
Type of connection:	PJE
Size of connection:	88.9
<b>Liquid:</b>	
Pumped liquid:	Water
Liquid temperature range:	32 .. 104 °F
Selected liquid temperature:	140 °F
Density:	61.35 lb/ft³
<b>Electrical data:</b>	
Motor standard:	IEC
Rated power - P2:	7.5 HP
Mains frequency:	60 Hz
Rated voltage:	3 x 440-480 V
Rated current:	13.2 A
Rated speed:	3470-3490 rpm
Method of start:	Direct-on-line (DOL)
Enclosure class (IEC 34-5):	IP66
<b>Others:</b>	
Minimum efficiency index, MEI ≥:	0.70
Net weight:	181 lb
Gross weight:	272 lb
Shipping volume:	12.2 ft³



## 93078178 BM hp 18-4-R NBR 60 Hz



Note! All units are in [in] unless others are stated.

Disclaimer: This simplified dimensional drawing does not show all details.