

Qty.	Description																				
1	<p data-bbox="204 450 424 479"><b>BM hp 18-5-R NBR</b></p> <div data-bbox="252 555 529 752" data-label="Image"> </div> <p data-bbox="592 792 1062 819" style="text-align: center;"><b>Note! Product picture may differ from actual product</b></p> <p data-bbox="204 826 464 853">Product No.: <a href="#">93078179</a></p> <p data-bbox="204 887 1369 938">BM hp is an encapsulated submersible pump that is suitable for applications where a high system pressure is required, as it can handle an inlet pressure up to 80 bar.</p> <p data-bbox="204 945 1452 996">Therefore, BM hp is ideal for water treatment, liquid transfer, pressure boosting and closed circulation systems with a high static pressure.</p> <p data-bbox="204 1032 1356 1090">BM hp pumps are available in R-version, in various sizes and with a large variety in the number of impellers. The range covers BM hp 18 to BM hp 215, a total of nine sizes.</p> <p data-bbox="204 1093 1217 1120">Depending on its size and frequency, a BM hp pump can reach a flow rate of 265 or 310 m3/h.</p> <p data-bbox="204 1122 855 1149">BM pumps can increase the system pressure up to 82.7 bar.</p> <p data-bbox="204 1182 1423 1209">The pump is supplied with an asynchronous motor, Victaulic connections and a straight pipe for BM 18 and above.</p> <p data-bbox="204 1240 1240 1267">The motor is protected by output filters against overvoltage and increased operating temperature.</p> <p data-bbox="204 1270 702 1296">As a result, BM hp is very reliable and durable.</p> <p data-bbox="204 1299 1013 1326">The compact design ensures easy maintenance and alignment of the pump.</p> <p data-bbox="204 1359 1420 1411">The stainless-steel pump and motor housing ensure an excellent resistance against different types of liquids. The R-version is designed to be highly efficient against corrosive liquids.</p> <p data-bbox="204 1447 1292 1473">Two different types of asynchronous motors are available for BM hp pumps: MS 6000 and MMS 8000.</p> <p data-bbox="204 1476 512 1503">The enclosure class is IP68.</p> <p data-bbox="204 1505 676 1532">The motor power ranges from 5.5 to 30 kW.</p> <p data-bbox="204 1534 1074 1561">The motor is controlled by a frequency converter and protected by Pt100 sensors.</p> <p data-bbox="204 1563 1295 1590">The frequency converter is sold as a separate accessory and must be purchased along with the pump.</p> <p data-bbox="204 1592 1445 1644">We recommend a Grundfos CUE frequency converter; however, frequency converters from alternative suppliers can be used as well.</p> <table data-bbox="204 1715 692 1865"> <tr> <td>Liquid:</td> <td></td> </tr> <tr> <td>Pumped liquid:</td> <td>Water</td> </tr> <tr> <td>Liquid temperature range:</td> <td>32 .. 104 °F</td> </tr> <tr> <td>Selected liquid temperature:</td> <td>140 °F</td> </tr> <tr> <td>Density:</td> <td>61.35 lb/ft<sup>3</sup></td> </tr> </table> <table data-bbox="204 1899 759 2049"> <tr> <td>Technical:</td> <td></td> </tr> <tr> <td>Rated flow:</td> <td>96.9 US GPM</td> </tr> <tr> <td>Rated head:</td> <td>74.12 psi</td> </tr> <tr> <td>Approvals:</td> <td>CE,EAC,UKCA</td> </tr> <tr> <td>Curve tolerance:</td> <td>ISO9906:2012 3B</td> </tr> </table> <p data-bbox="204 2078 309 2105">Materials:</p>	Liquid:		Pumped liquid:	Water	Liquid temperature range:	32 .. 104 °F	Selected liquid temperature:	140 °F	Density:	61.35 lb/ft <sup>3</sup>	Technical:		Rated flow:	96.9 US GPM	Rated head:	74.12 psi	Approvals:	CE,EAC,UKCA	Curve tolerance:	ISO9906:2012 3B
Liquid:																					
Pumped liquid:	Water																				
Liquid temperature range:	32 .. 104 °F																				
Selected liquid temperature:	140 °F																				
Density:	61.35 lb/ft <sup>3</sup>																				
Technical:																					
Rated flow:	96.9 US GPM																				
Rated head:	74.12 psi																				
Approvals:	CE,EAC,UKCA																				
Curve tolerance:	ISO9906:2012 3B																				



Company name:

Created by:

Phone:

Date: 10/03/2025

Project:  
Reference Number:

Client:  
Client Number:  
Contact:

Qty.	Description
1	<p>Pump: Stainless steel EN 1.4539 AISI 904L</p> <p>Impeller: Stainless steel EN 1.4539 AISI 904L</p> <p>Motor: Stainless steel EN 1.4539 AISI 904L</p> <p>Sleeve: Stainless steel SAF 2205 EN 1.4462</p> <p>Installation: Maximum operating pressure: 1199.46 psi Maximum permissible inlet pressure: 1189.31 psi Maximum outlet pressure: 1189.31 psi Type of connection: PJE Size of connection: 88.9</p> <p>Electrical data: Motor standard: IEC Rated power - P2: 7.5 HP Mains frequency: 60 Hz Rated voltage: 3 x 440-480 V Rated current: 13.2 A Rated speed: 3470-3490 rpm Method of start: Direct-on-line (DOL) Enclosure class (IEC 34-5): IP66</p> <p>Others: Minimum efficiency index, MEI ≥: 0.70 Net weight: 183 lb Gross weight: 274 lb Shipping volume: 12.2 ft³</p>



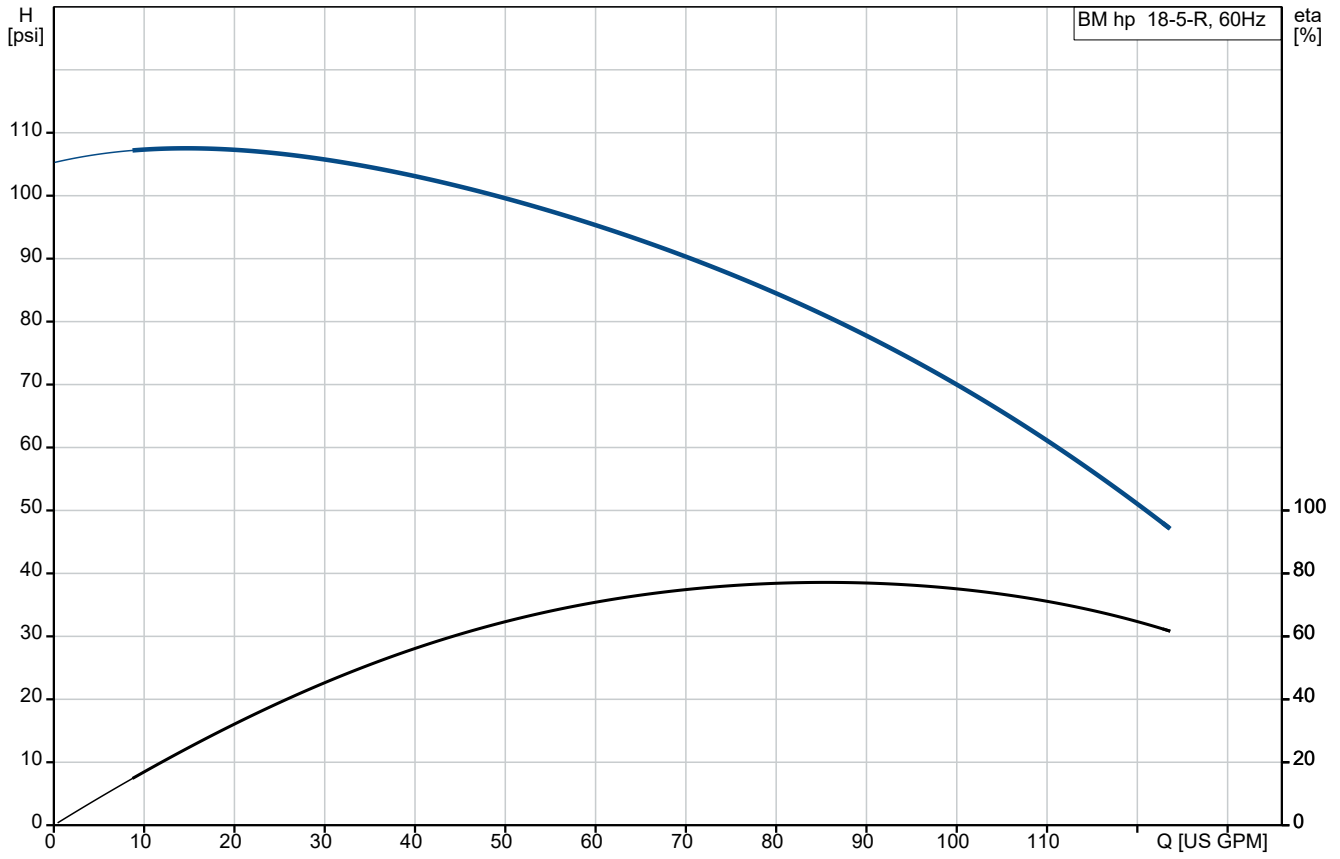
Company name:  
Created by:  
Phone:

Date: 10/03/2025

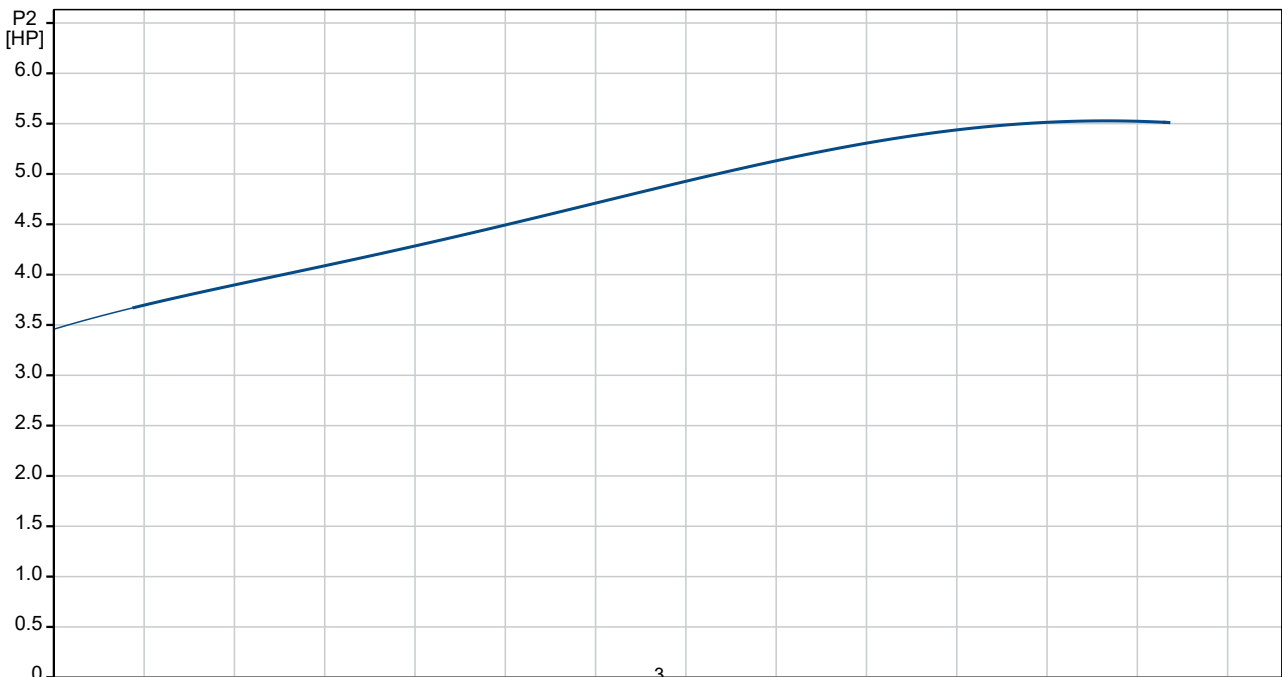
Project:  
Reference Number:

Client:  
Client Number:  
Contact:

### 93078179 BM hp 18-5-R NBR 60 Hz



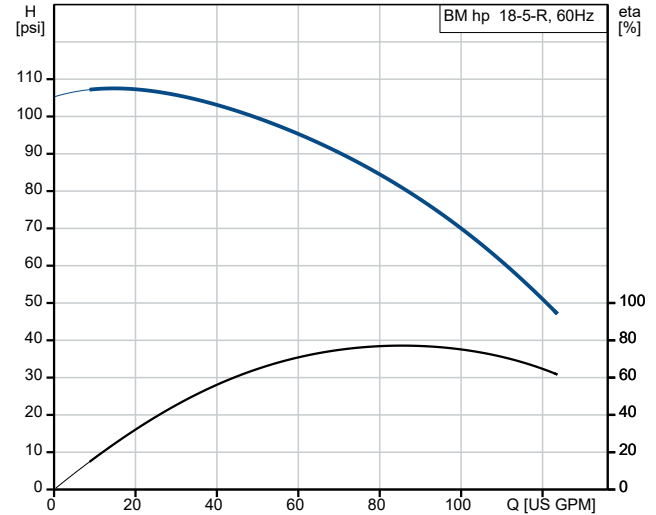
Pumped liquid = Water  
Liquid temperature during operation = 140 °F  
Density = 61.35 lb/ft<sup>3</sup>



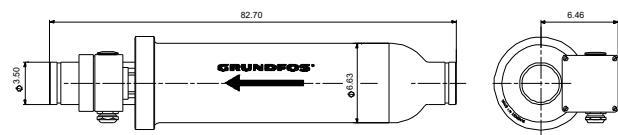
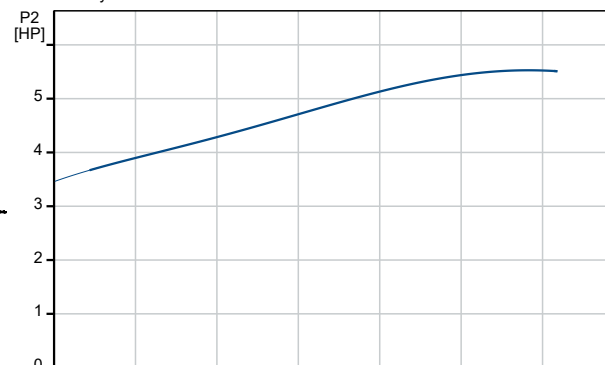
**Project:**  
**Reference Number:**

**Client:**  
**Client Number:**  
**Contact:**

Description	Value
<b>General information:</b>	
Product name:	BM hp 18-5-R NBR
Product No:	93078179
EAN number:	5715123518169
<b>Technical:</b>	
Rated flow:	96.9 US GPM
Rated head:	74.12 psi
Stages:	5
Approvals:	CE,EAC,UKCA
Curve tolerance:	ISO9906:2012 3B
Model:	E
<b>Materials:</b>	
Pump:	Stainless steel
	EN 1.4539
	AISI 904L
Impeller:	Stainless steel
	EN 1.4539
	AISI 904L
Motor:	Stainless steel
	EN 1.4539
	AISI 904L
Code for rubber:	NBR
Sleeve:	Stainless steel
	SAF 2205
	EN 1.4462
<b>Installation:</b>	
Maximum operating pressure:	1199.46 psi
Maximum permissible inlet pressure:	1189.31 psi
Maximum outlet pressure:	1189.31 psi
Type of connection:	PJE
Size of connection:	88.9
<b>Liquid:</b>	
Pumped liquid:	Water
Liquid temperature range:	32 .. 104 °F
Selected liquid temperature:	140 °F
Density:	61.35 lb/ft <sup>3</sup>
<b>Electrical data:</b>	
Motor standard:	IEC
Rated power - P2:	7.5 HP
Mains frequency:	60 Hz
Rated voltage:	3 x 440-480 V
Rated current:	13.2 A
Rated speed:	3470-3490 rpm
Method of start:	Direct-on-line (DOL)
Enclosure class (IEC 34-5):	IP66
<b>Others:</b>	
Minimum efficiency index, MEI ≥:	0.70
Net weight:	183 lb
Gross weight:	274 lb
Shipping volume:	12.2 ft <sup>3</sup>



Pumped liquid = Water  
Liquid temperature during operation = 140 °F  
Density = 61.35 lb/ft<sup>3</sup>





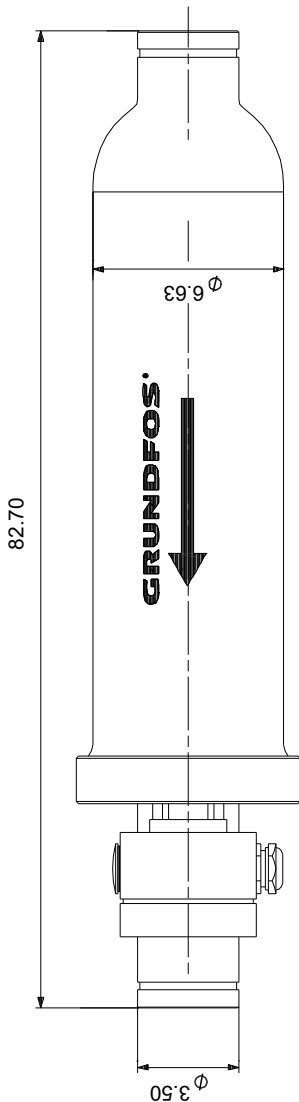
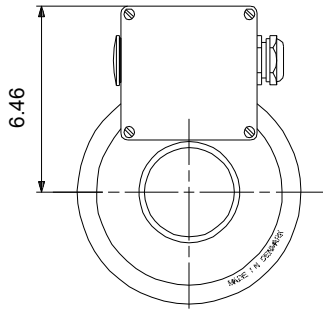
Company name:  
Created by:  
Phone:

Date: 10/03/2025

Project:  
Reference Number:

Client:  
Client Number:  
Contact:

## 93078179 BM hp 18-5-R NBR 60 Hz



Note! All units are in [in] unless others are stated.  
Disclaimer: This simplified dimensional drawing does not show all details.