

Qty.	Description
------	-------------

1	BM hp 77-2-AB-R NBR
---	----------------------------



Product No.: [95908995](#)

BM hp is an encapsulated submersible pump that is suitable for applications where a high system pressure is required, as it can handle an inlet pressure up to 80 bar.

Therefore, BM hp is ideal for water treatment, liquid transfer, pressure boosting and closed circulation systems with a high static pressure.

BM hp pumps are available in R-version, in various sizes and with a large variety in the number of impellers. The range covers BM hp 18 to BM hp 215, a total of nine sizes.

Depending on its size and frequency, a BM hp pump can reach a flow rate of 265 or 310 m3/h.

BM pumps can increase the system pressure up to 82.7 bar.

The pump is supplied with an asynchronous motor, Victaulic connections and a straight pipe for BM 18 and above.

The motor is protected by output filters against overvoltage and increased operating temperature.

As a result, BM hp is very reliable and durable.

The compact design ensures easy maintenance and alignment of the pump.

The stainless-steel pump and motor housing ensure an excellent resistance against different types of liquids. The R-version is designed to be highly efficient against corrosive liquids.

Two different types of asynchronous motors are available for BM hp pumps: MS 6000 and MMS 8000.

The enclosure class is IP68.

The motor power ranges from 5.5 to 30 kW.

The motor is controlled by a frequency converter and protected by Pt100 sensors.

The frequency converter is sold as a separate accessory and must be purchased along with the pump.

We recommend a Grundfos CUE frequency converter; however, frequency converters from alternative suppliers can be used as well.

Liquid:

Pumped liquid:	Water
Maximum liquid temperature:	104 °F
Selected liquid temperature:	140 °F
Density:	61.35 lb/ft³

Technical:

Rated flow:	405 US GPM
Rated head:	27.13 psi
Curve tolerance:	ISO9906:2012 3B

Materials:

Pump:	Stainless steel
	DIN W.-Nr. 1.4539
	AISI 904L
Impeller:	Stainless steel
	EN 1.4539
	AISI 904L



Company name:

Created by:

Phone:

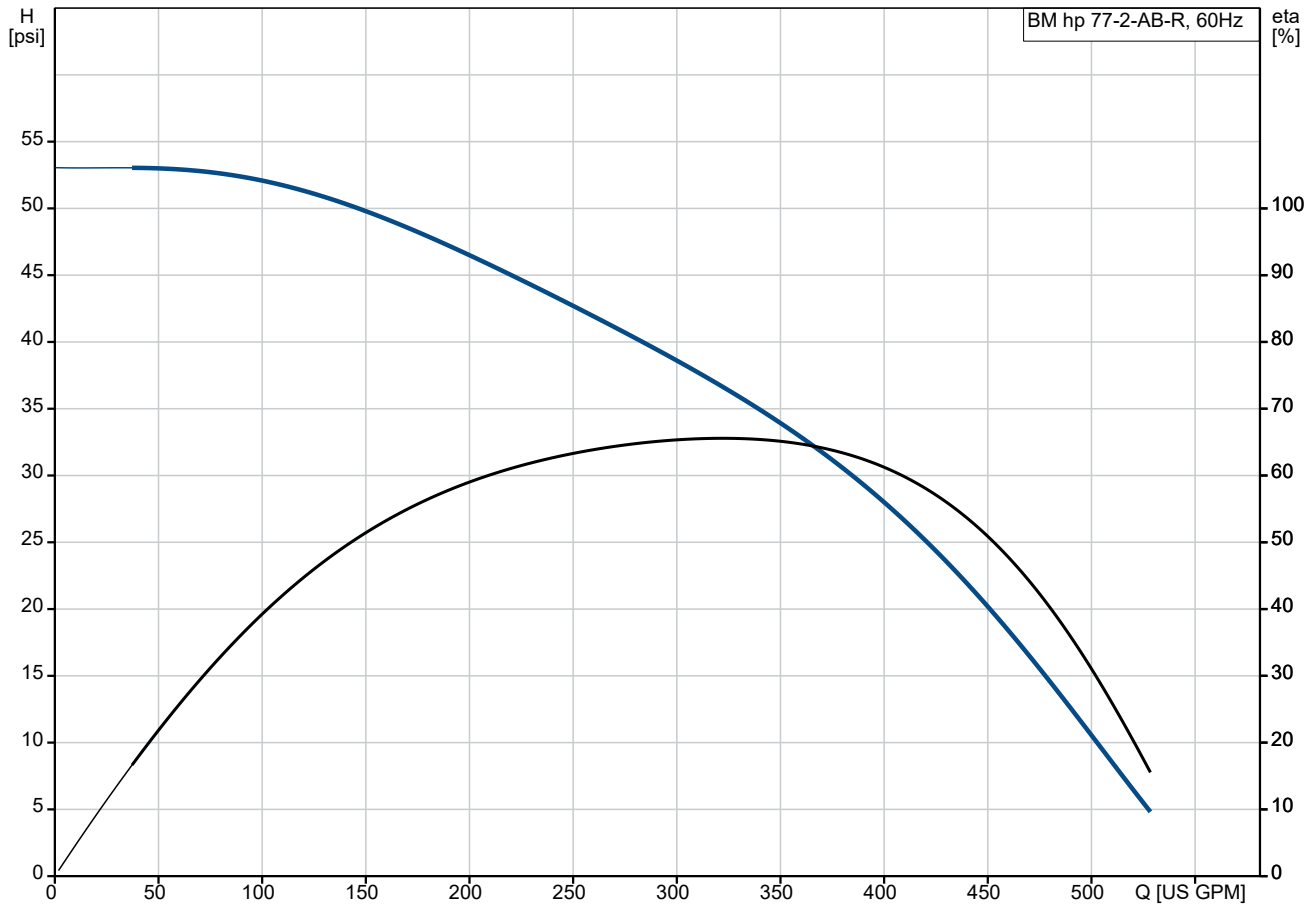
Date:

01/04/2025

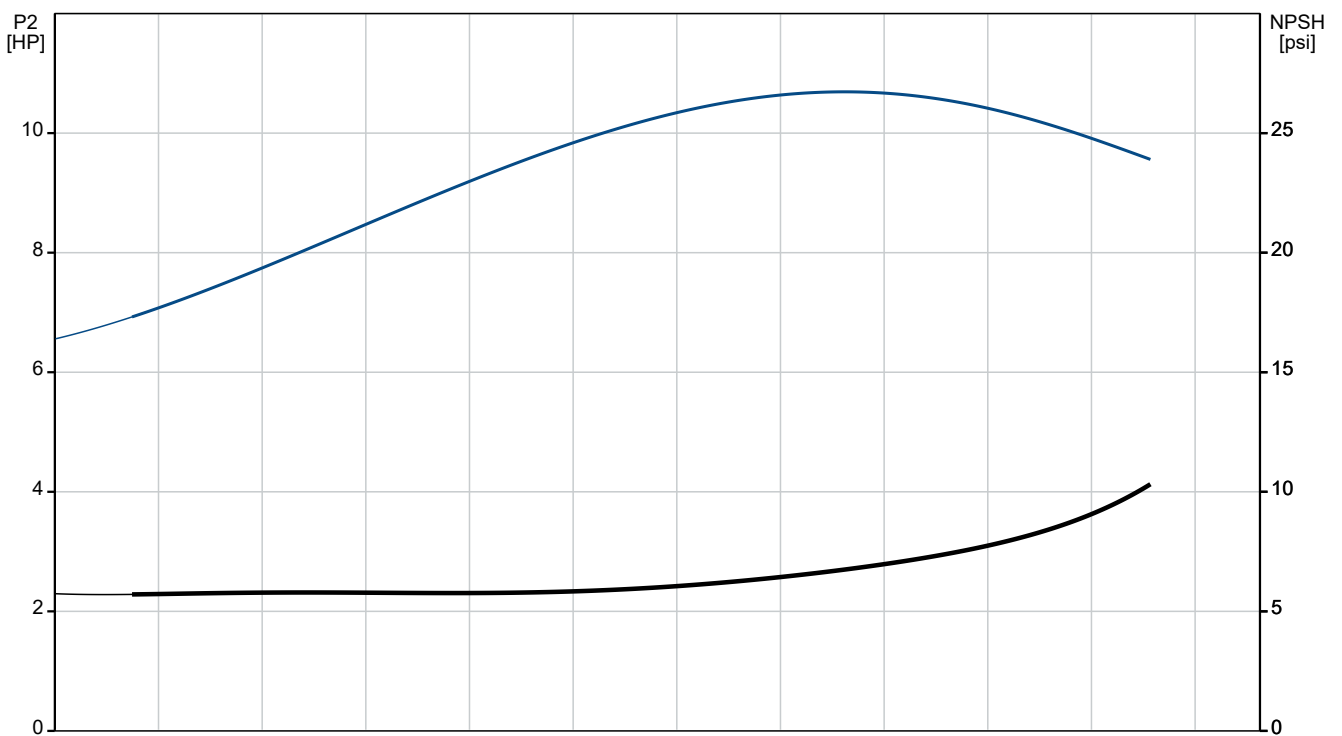
Qty.	Description
------	-------------

1	<div>Motor: Stainless steel DIN W.-Nr. 1.4539 AISI 904L</div> <div>Sleeve: Stainless steel SAF 2205 EN 1.4462</div> <div>Installation: Maximum operating pressure: 1199.46 psi Maximum permissible inlet pressure: 1189.31 psi Maximum outlet pressure: 1189.31 psi Pipe connection standard: PJE Pipe connection: 139 mm</div> <div>Electrical data: Rated power - P2: 10 HP Mains frequency: 60 Hz Rated voltage: 3 x 440-480 V Service factor: 1.0 Rated current: 17.4 A Rated speed: 2840-2860-2870 rpm Method of start: DOL Enclosure class (IEC 34-5): IP66</div> <div>Others: Minimum efficiency index, MEI ≥: --- Net weight: 325 lb Gross weight: 491 lb Country of origin: DK Custom tariff no.: 8413.70.2004</div>
---	---

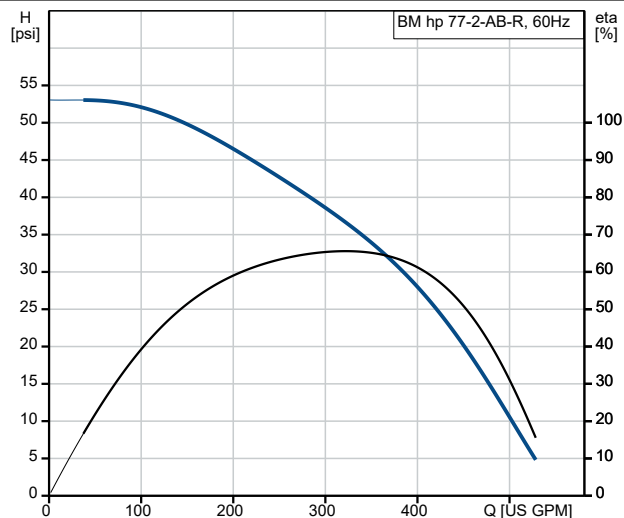
95908995 BM hp 77-2-AB-R NBR 60 Hz



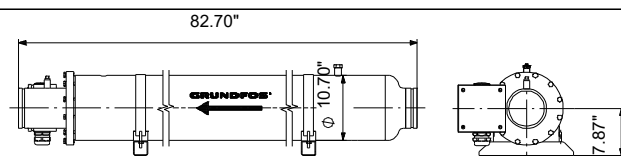
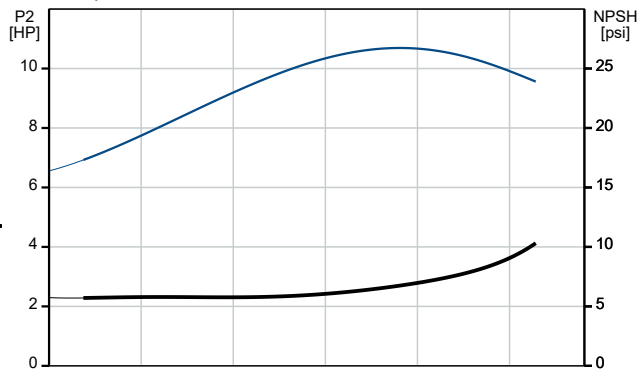
Pumped liquid = Water
 Liquid temperature during operation = 140 °F
 Density = 61.35 lb/ft³



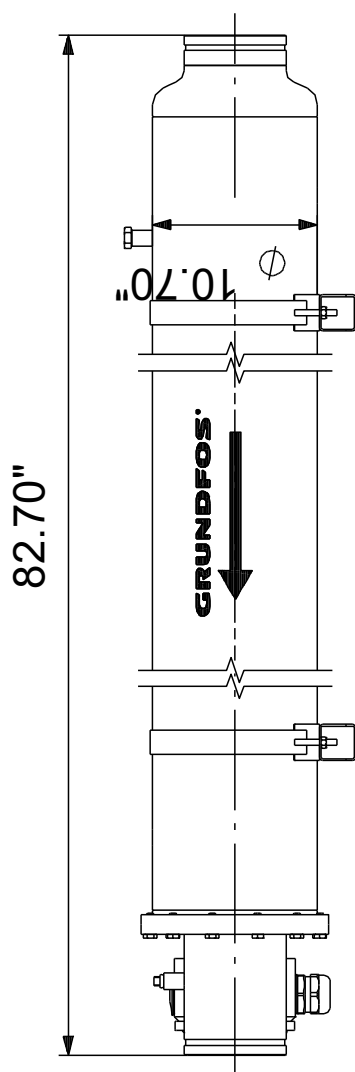
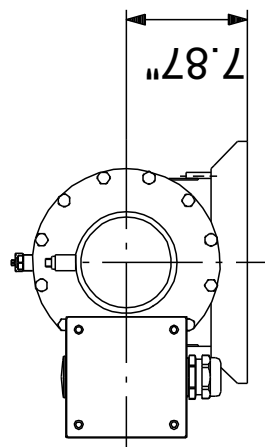
Description	Value
General information:	
Product name:	BM hp 77-2-AB-R NBR
Product No:	95908995
EAN number:	5700838248036
Technical:	
Rated flow:	405 US GPM
Rated head:	27.13 psi
Stages:	2
Number of reduced-diameter impellers:	AB
Curve tolerance:	ISO9906:2012 3B
Model:	A
Materials:	
Pump:	Stainless steel
	DIN W.-Nr. 1.4539
	AISI 904L
Impeller:	Stainless steel
	EN 1.4539
	AISI 904L
Motor:	Stainless steel
	DIN W.-Nr. 1.4539
	AISI 904L
Code for rubber:	NBR
Sleeve:	Stainless steel
	SAF 2205
	EN 1.4462
Installation:	
Maximum operating pressure:	1199.46 psi
Maximum permissible inlet pressure:	1189.31 psi
Maximum outlet pressure:	1189.31 psi
Pipe connection standard:	PJE
Pipe connection:	139 mm
Liquid:	
Pumped liquid:	Water
Maximum liquid temperature:	104 °F
Selected liquid temperature:	140 °F
Density:	61.35 lb/ft ³
Electrical data:	
Rated power - P2:	10 HP
Mains frequency:	60 Hz
Rated voltage:	3 x 440-480 V
Service factor:	1.0
Rated current:	17.4 A
Rated speed:	2840-2860-2870 rpm
Method of start:	DOL
Enclosure class (IEC 34-5):	IP66
Others:	
Minimum efficiency index, MEI ≥:	---
Net weight:	325 lb
Gross weight:	491 lb
Country of origin:	DK
Custom tariff no.:	8413.70.2004



Pumped liquid = Water
Liquid temperature during operation = 140 °F
Density = 61.35 lb/ft³



95908995 BM hp 77-2-AB-R NBR 60 Hz



Note! All units are in [in] unless others are stated.
Disclaimer: This simplified dimensional drawing does not show all details.