

Submittal Data

| | | |
|-----------------------|------------------|-------------|
| PROJECT: | UNIT TAG: | QUANTITY: |
| REPRESENTATIVE: _____ | TYPE OF SERVICE: | DATE: _____ |
| ENGINEER: | SUBMITTED BY: | DATE: |
| CONTRACTOR: | APPROVED BY: | DATE: |
| | ORDER NO.: | DATE: |

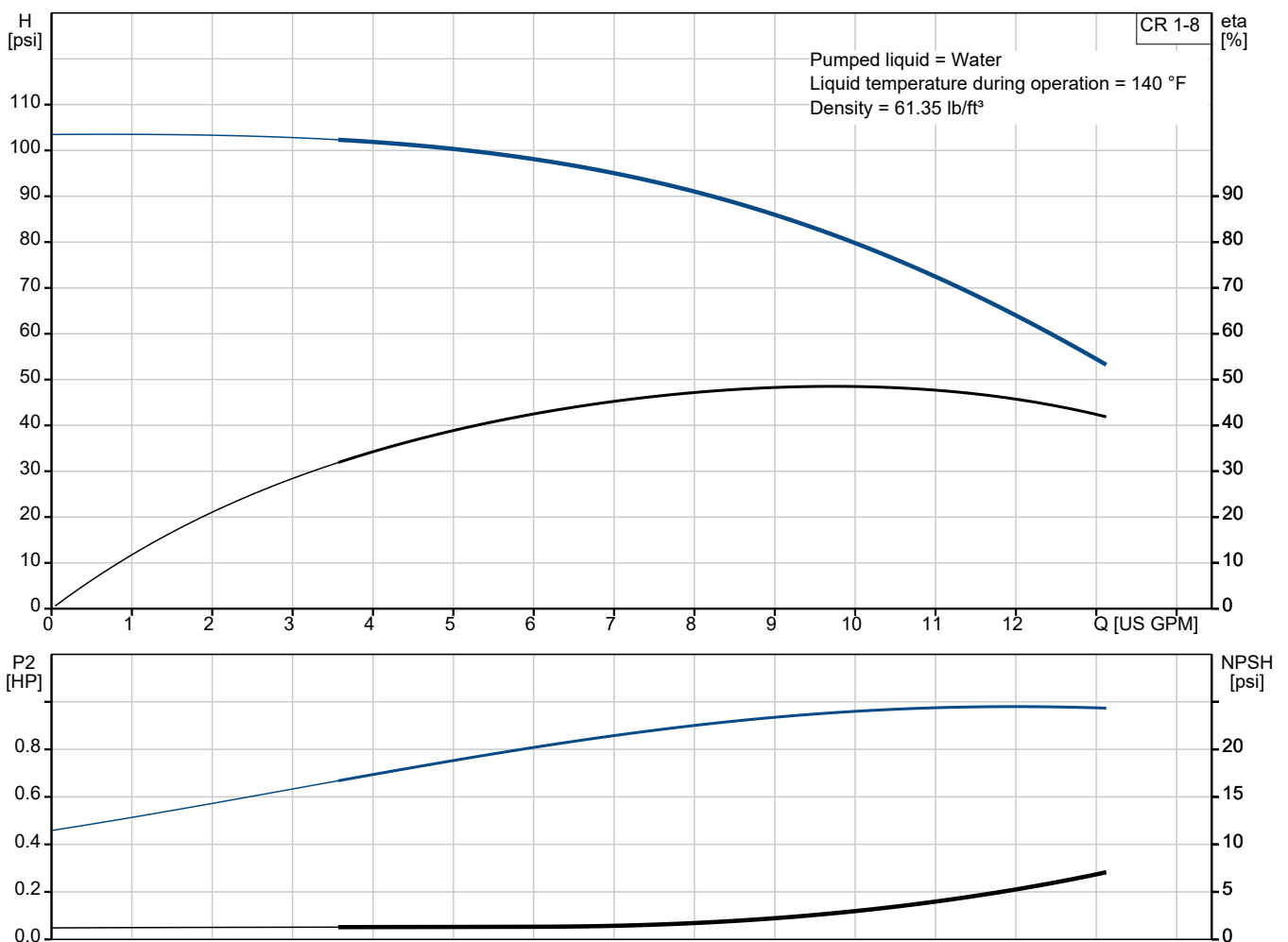


CR 1-8 A-B-A-V-HQQV

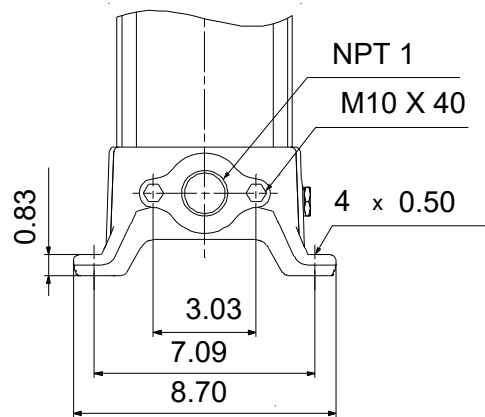
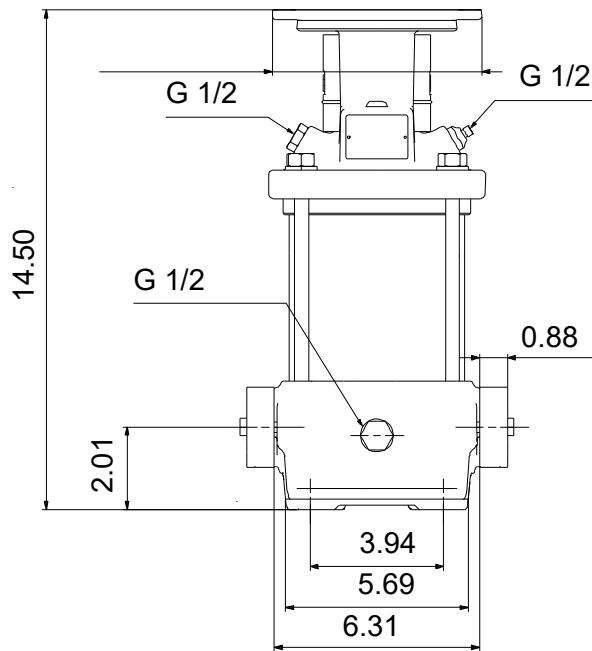
Vertical, multistage centrifugal pump with suction and discharge ports on the same level. The pump head and base are in cast iron - all other wetted parts are in stainless steel (EN 1.4301)

Note! Product picture may differ from actual product

| Conditions of Service | | Pump Data | | Motor Data | |
|-----------------------|--------|------------------------------|------------------|------------------|-------|
| Liquid: | Water | Max pressure at stated temp: | 232 psi / 194 °F | Mains frequency: | 60 Hz |
| Temperature: | 140 °F | Liquid temperature range: | -4 .. 194 °F | | |
| Specific Gravity: | 0.985 | Shaft seal: | HQQV | | |
| | | Product number: | 96082027 | | |



Submittal Data



Materials:

| | |
|------------------|---|
| Base: | Cast iron EN 1561 EN-GJL-200 ASTM A48-25B |
| Impeller: | Stainless steel AISI 304 EN 1.4301 |
| Material code: | A |
| Code for rubber: | V |

Qty. Description

1 CR 1-8 A-B-A-V-HQQV



Note! Product picture may differ from actual product

Product No.: [96082027](#)

Pump without motor

Vertical, multistage centrifugal pump with inlet and outlet ports on same the level (inline). The pump head and base are in cast iron – all other wetted parts are in stainless steel. A cartridge shaft seal ensures high reliability, safe handling, and easy access and service. Power transmission is via a rigid split coupling. Pipe connection is via oval flanges with internal NPT threads.

Further product details

Steel, cast iron and aluminium components have an epoxy-based coating made in a cathodic electro-deposition (CED) process.

CED is a high-quality dip-painting process where an electrical field around the products ensures deposition of paint particles as a thin, well-controlled layer on the surface.

An integral part of the process is a pretreatment.

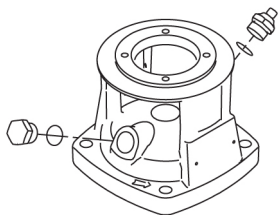
The entire process consists of these elements:

- 1) Alkaline-based cleaning.
- 2) Zinc phosphating.
- 3) Cathodic electro-deposition.
- 4) Curing to a dry film thickness 18-22 my m.

The colour code for the finished product is NCS 9000/RAL 9005.

Pump

The pump head, pump head cover and flange for motor mounting is made in one piece. The pump head has a combined 1/2" priming plug and vent screw.



The pump is fitted with a balanced O-ring seal unit with a rigid torque-transmission system.

This seal type is assembled in a cartridge unit which makes replacement safe and easy.

Due to the balancing, this seal type is suitable for high-pressure applications.

The cartridge construction also protects the pump shaft from possible wear from a dynamic O-ring between pump shaft and shaft seal.

Seal faces:

- Rotating seal ring material: silicon carbide (SiC)
- Stationary seat material: silicon carbide (SiC)

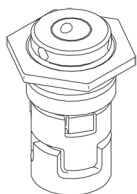
This material pairing is used where higher corrosion resistance is required. The high hardness of this material pairing offers good resistance against abrasive particles.

Secondary seal material: FKM (fluorocarbon rubber)

FKM has excellent resistance to oils and chemicals. Above 90 °C, FKM should only be used in media without water.

| Qty. | Description |
|------|-------------|
|------|-------------|

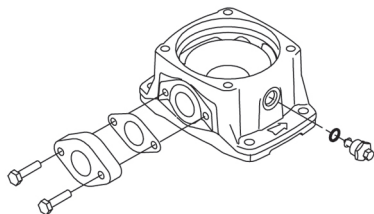
| | |
|---|---|
| 1 |  <p>The shaft seal is screwed into the pump head.</p> <p>The chambers and impellers are made of stainless-steel sheet. The chambers are provided with a PTFE neck ring offering improved sealing and high efficiency. The impellers have smooth surfaces, and the shape of the blades ensure a high efficiency.</p> <p>The base is made of cast iron. The oval flanges are bolted to the base. The outlet side of the base has a combined drain plug and bypass valve. The pump is secured to the foundation by four bolts through the base plate.</p>  <p>Motor</p> <p>The pump is sold without motor.</p> <p>Technical data</p> <p>Liquid:</p> <p>Pumped liquid: Water</p> <p>Liquid temperature range: -4 .. 194 °F</p> <p>Selected liquid temperature: 140 °F</p> <p>Density: 61.35 lb/ft³</p> <p>Technical:</p> <p>Pump speed on which pump data are based: 3484 rpm</p> <p>Rated flow: 9.69 US GPM</p> <p>Rated head: 72.86 psi</p> <p>Pump orientation: Vertical</p> <p>Shaft seal arrangement: Single</p> <p>Primary shaft seal: HQQV</p> <p>Code for shaft seal: HQQV</p> <p>Approvals: CE</p> <p>Curve tolerance: ISO9906:2012 3B</p> <p>Materials:</p> <p>Base: Cast iron EN 1561 EN-GJL-200 ASTM A48-25B</p> <p>Impeller: Stainless steel EN 1.4301 AISI 304</p> <p>Bearing: SIC</p> <p>Installation:</p> <p>Maximum operating pressure: 232.06 psi</p> <p>Max pressure at stated temp: 232 psi / 194 °F</p> |
|---|---|



The shaft seal is screwed into the pump head.

The chambers and impellers are made of stainless-steel sheet. The chambers are provided with a PTFE neck ring offering improved sealing and high efficiency. The impellers have smooth surfaces, and the shape of the blades ensure a high efficiency.

The base is made of cast iron. The oval flanges are bolted to the base. The outlet side of the base has a combined drain plug and bypass valve. The pump is secured to the foundation by four bolts through the base plate.



Motor

The pump is sold without motor.

Technical data

Liquid:

Pumped liquid: Water

Liquid temperature range: -4 .. 194 °F

Selected liquid temperature: 140 °F

Density: 61.35 lb/ft³

Technical:

Pump speed on which pump data are based: 3484 rpm

Rated flow: 9.69 US GPM

Rated head: 72.86 psi

Pump orientation: Vertical

Shaft seal arrangement: Single

Primary shaft seal: HQQV

Code for shaft seal: HQQV

Approvals: CE

Curve tolerance: ISO9906:2012 3B

Materials:

Base: Cast iron
EN 1561 EN-GJL-200
ASTM A48-25B

Impeller: Stainless steel
EN 1.4301
AISI 304

Bearing: SIC

Installation:

Maximum operating pressure: 232.06 psi

Max pressure at stated temp: 232 psi / 194 °F



Company name:

Created by:

Phone:

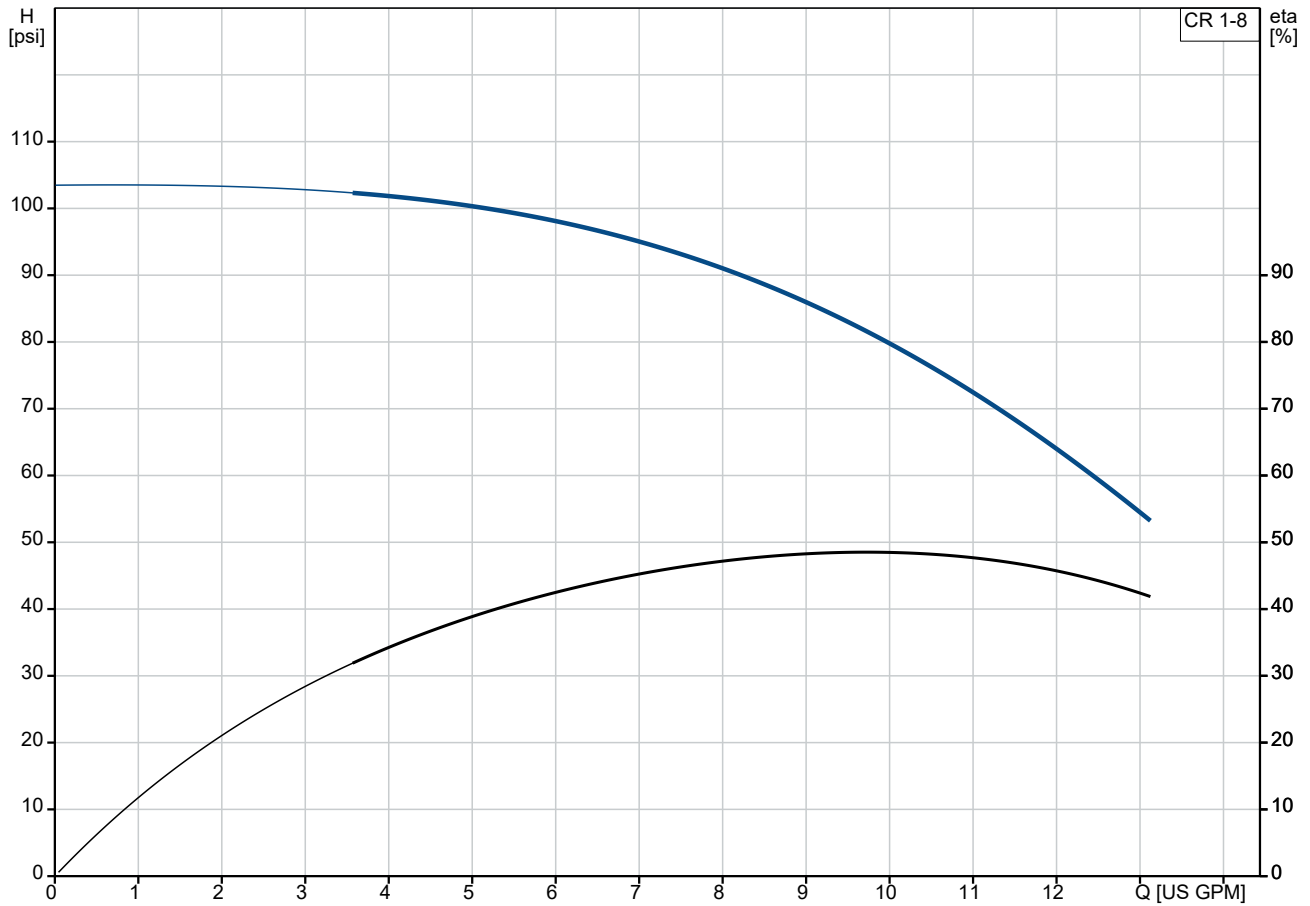
Date:

22/04/2025

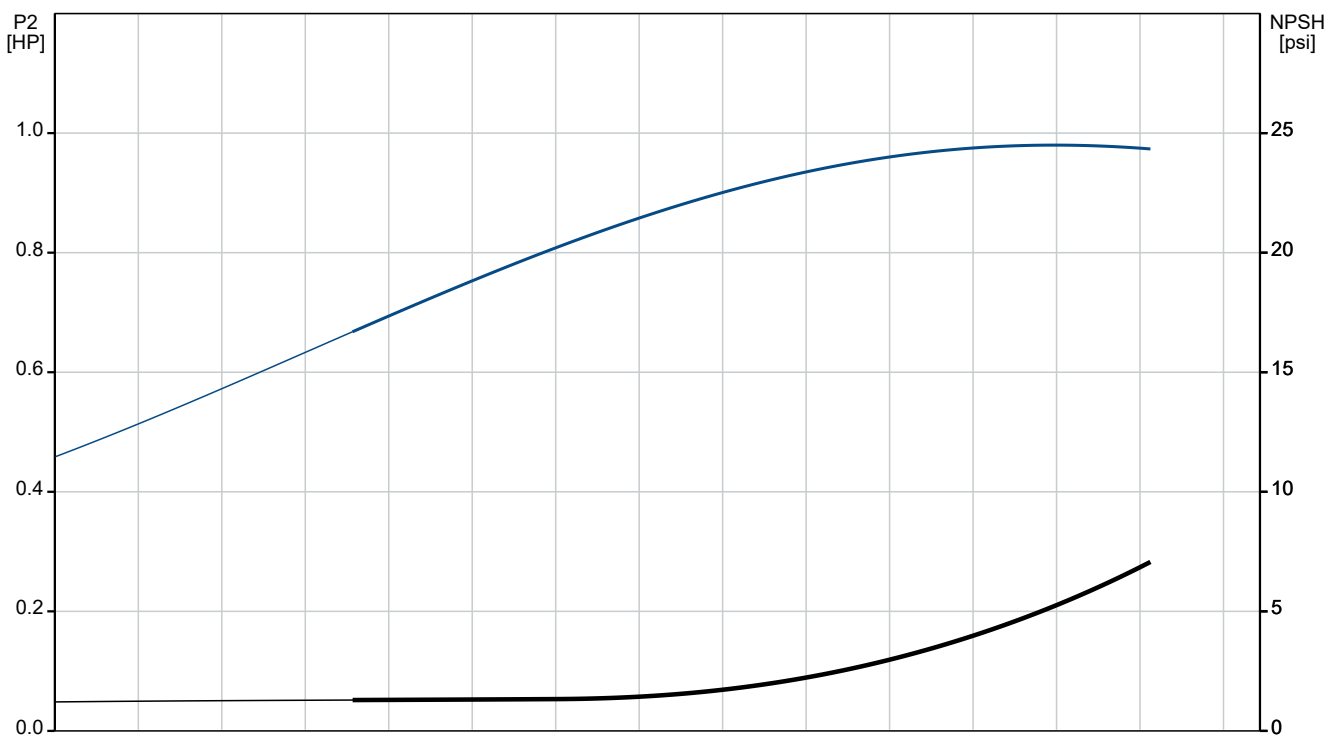
| Qty. | Description |
|------|-------------|
|------|-------------|

| | |
|---------------------------------|-----------------|
| 1 | 232 psi / -4 °F |
| Type of connection: | Oval / NPT(F) |
| Size of inlet connection: | 1 inch |
| Size of outlet connection: | 1 inch |
| Pressure rating for connection: | PN 16 |
| Flange size for motor: | 56C |
| Electrical data: | |
| Motor standard: | NEMA |
| Power (P2) required by pump: | 1 HP |
| Controls: | |
| Frequency converter: | None |
| Others: | |
| Net weight: | 34.4 lb |
| Gross weight: | 45.4 lb |
| Shipping volume: | 4.94 ft³ |
| Country of origin: | US |
| Custom tariff no.: | 8413.70.2040 |

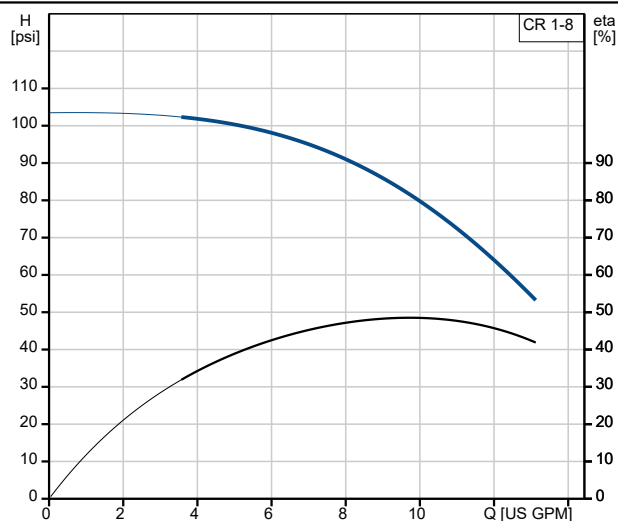
96082027 CR 1-8 A-B-A-V-HQQV 60 Hz



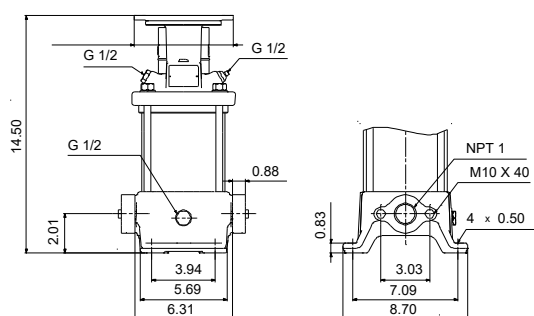
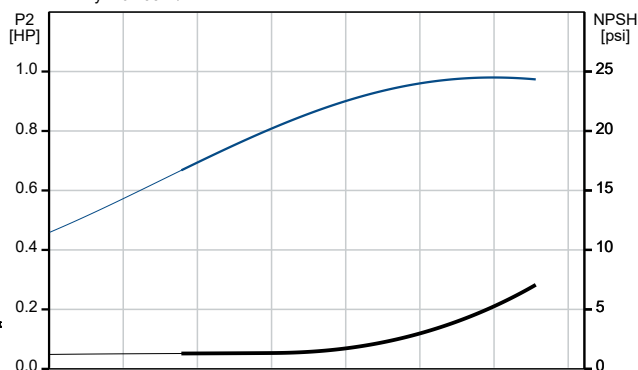
Pumped liquid = Water
 Liquid temperature during operation = 140 °F
 Density = 61.35 lb/ft³



| Description | Value |
|--|---------------------|
| General information: | |
| Product name: | CR 1-8 A-B-A-V-HQQV |
| Product No: | 96082027 |
| EAN number: | 5700395167658 |
| Technical: | |
| Pump speed on which pump data are based: | 3484 rpm |
| Rated flow: | 9.69 US GPM |
| Rated head: | 72.86 psi |
| Maximum head: | 99.01 psi |
| Stages: | 8 |
| Impellers: | 8 |
| Number of reduced-diameter impellers: | 0 |
| Low NPSH: | N |
| Pump orientation: | Vertical |
| Shaft seal arrangement: | Single |
| Primary shaft seal: | HQQV |
| Code for shaft seal: | HQQV |
| Approvals: | CE |
| Curve tolerance: | ISO9906:2012 3B |
| Pump version: | A |
| Model: | A |
| Materials: | |
| Base: | Cast iron |
| | EN 1561 EN-GJL-200 |
| | ASTM A48-25B |
| Impeller: | Stainless steel |
| | EN 1.4301 |
| | AISI 304 |
| Material code: | A |
| Code for rubber: | V |
| Bearing: | SIC |
| Installation: | |
| Maximum operating pressure: | 232.06 psi |
| Max pressure at stated temp: | 232 psi / 194 °F |
| | 232 psi / -4 °F |
| Type of connection: | Oval / NPT(F) |
| Size of inlet connection: | 1 inch |
| Size of outlet connection: | 1 inch |
| Pressure rating for connection: | PN 16 |
| Flange size for motor: | 56C |
| Connect code: | B |
| Liquid: | |
| Pumped liquid: | Water |
| Liquid temperature range: | -4 .. 194 °F |
| Selected liquid temperature: | 140 °F |
| Density: | 61.35 lb/ft³ |
| Electrical data: | |
| Motor standard: | NEMA |
| Power (P2) required by pump: | 1 HP |
| Controls: | |
| Frequency converter: | None |
| Others: | |
| Net weight: | 34.4 lb |
| Gross weight: | 45.4 lb |
| Shipping volume: | 4.94 ft³ |
| Country of origin: | US |



Pumped liquid = Water
Liquid temperature during operation = 140 °F
Density = 61.35 lb/ft³





Company name:

Created by:

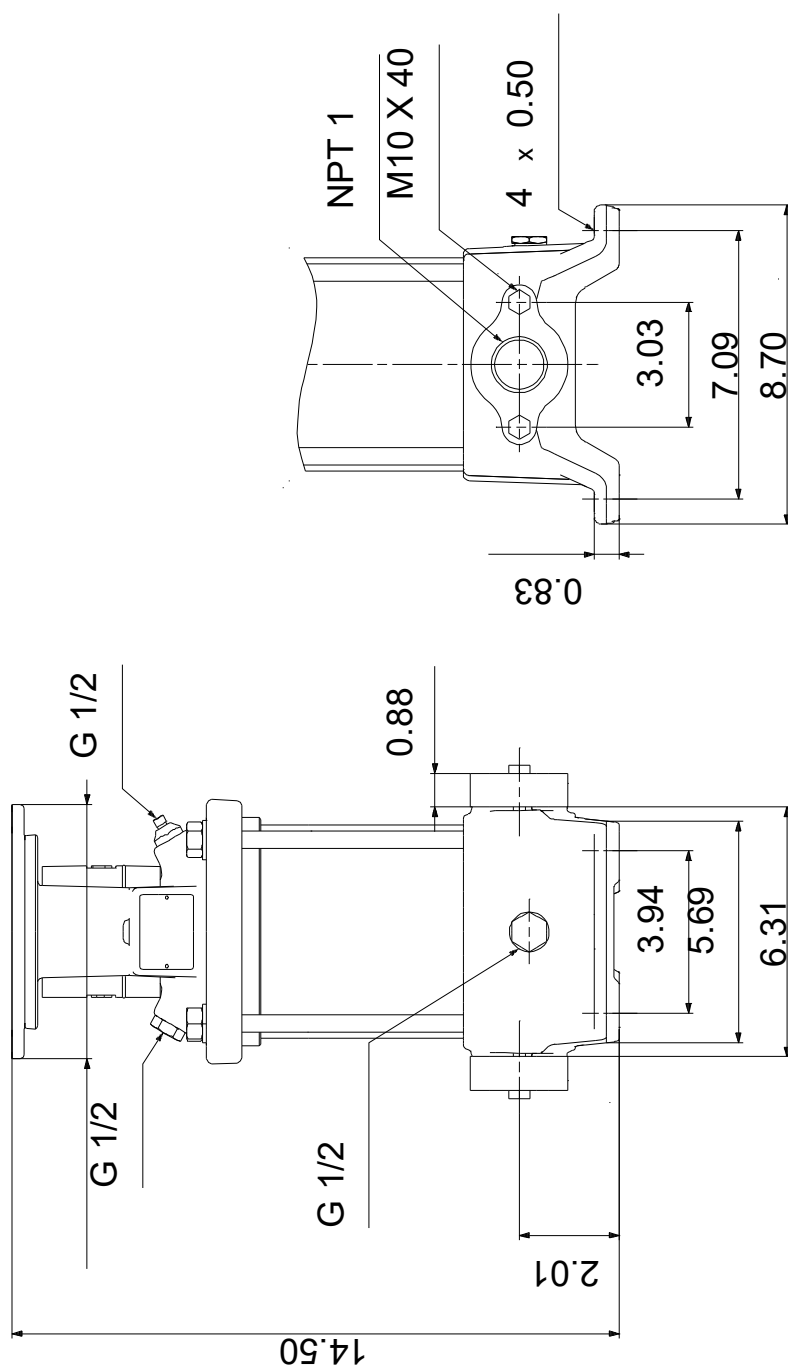
Phone:

Date:

22/04/2025

| Description | Value |
|--------------------|--------------|
| Custom tariff no.: | 8413.70.2040 |

96082027 CR 1-8 A-B-A-V-HQQV 60 Hz



Note! All units are in [in] unless others are stated.

Disclaimer: This simplified dimensional drawing does not show all details.