

| Qty. | Description |
|------|-------------|
|------|-------------|

| | |
|---|-------------------------|
| 1 | BM hp 77-3-R NBR |
|---|-------------------------|



Product No.: [96293304](#)

BM hp is an encapsulated submersible pump that is suitable for applications where a high system pressure is required, as it can handle an inlet pressure up to 80 bar.

Therefore, BM hp is ideal for water treatment, liquid transfer, pressure boosting and closed circulation systems with a high static pressure.

BM hp pumps are available in R-version, in various sizes and with a large variety in the number of impellers. The range covers BM hp 18 to BM hp 215, a total of nine sizes.

Depending on its size and frequency, a BM hp pump can reach a flow rate of 265 or 310 m3/h.

BM pumps can increase the system pressure up to 82.7 bar.

The pump is supplied with an asynchronous motor, Victaulic connections and a straight pipe for BM 18 and above.

The motor is protected by output filters against overvoltage and increased operating temperature.

As a result, BM hp is very reliable and durable.

The compact design ensures easy maintenance and alignment of the pump.

The stainless-steel pump and motor housing ensure an excellent resistance against different types of liquids. The R-version is designed to be highly efficient against corrosive liquids.

Two different types of asynchronous motors are available for BM hp pumps: MS 6000 and MMS 8000.

The enclosure class is IP68.

The motor power ranges from 5.5 to 30 kW.

The motor is controlled by a frequency converter and protected by Pt100 sensors.

The frequency converter is sold as a separate accessory and must be purchased along with the pump.

We recommend a Grundfos CUE frequency converter; however, frequency converters from alternative suppliers can be used as well.

Liquid:

| | |
|------------------------------|--------------|
| Pumped liquid: | Water |
| Maximum liquid temperature: | 104 °F |
| Selected liquid temperature: | 140 °F |
| Density: | 61.35 lb/ft³ |

Technical:

| | |
|------------------|-----------------|
| Rated flow: | 405 US GPM |
| Rated head: | 71.32 psi |
| Curve tolerance: | ISO9906:2012 3B |

Materials:

| | |
|-----------|-------------------|
| Pump: | Stainless steel |
| | DIN W.-Nr. 1.4539 |
| | AISI 904L |
| Impeller: | Stainless steel |
| | EN 1.4539 |
| | AISI 904L |



Company name:

Created by:

Phone:

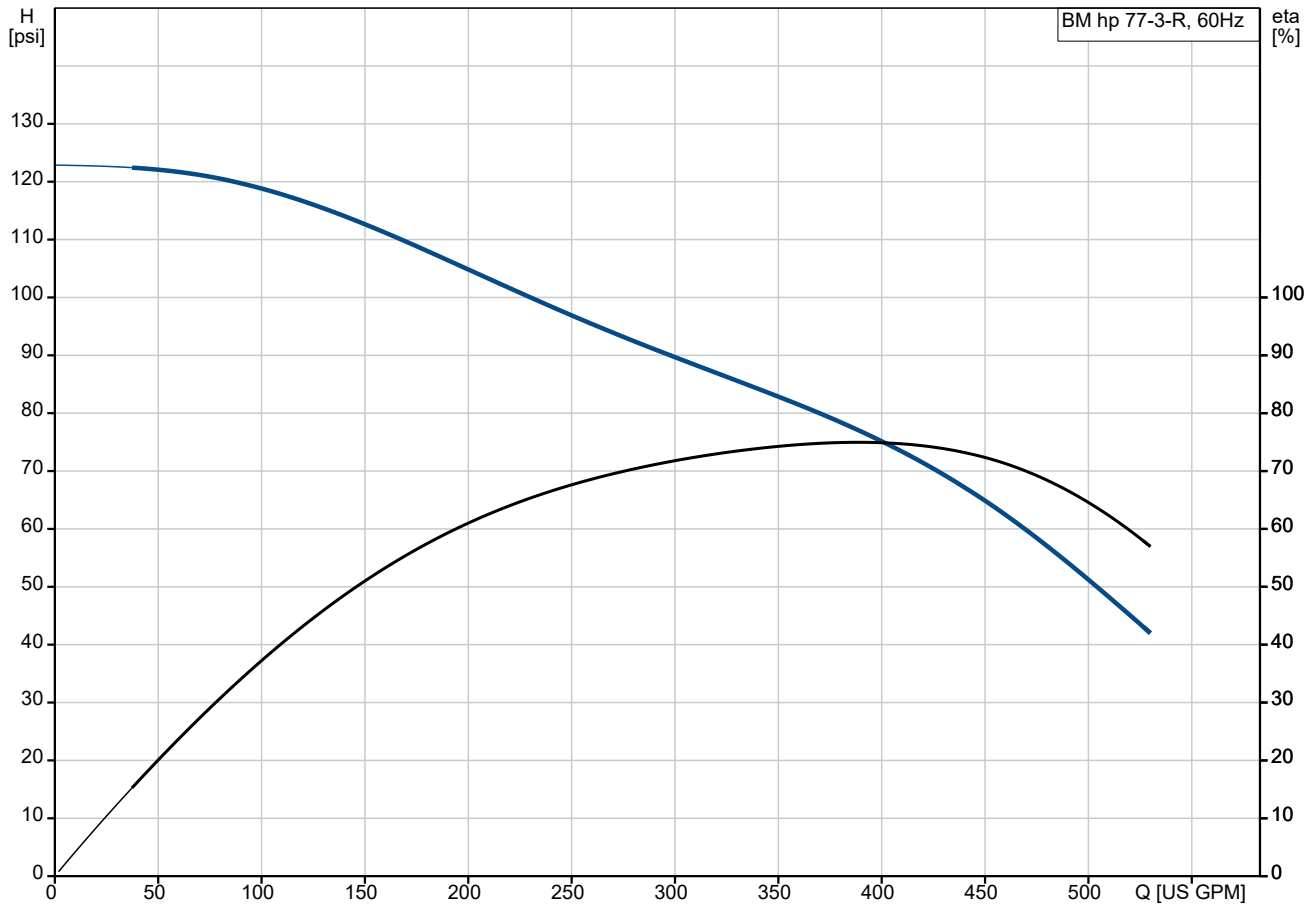
Date:

01/04/2025

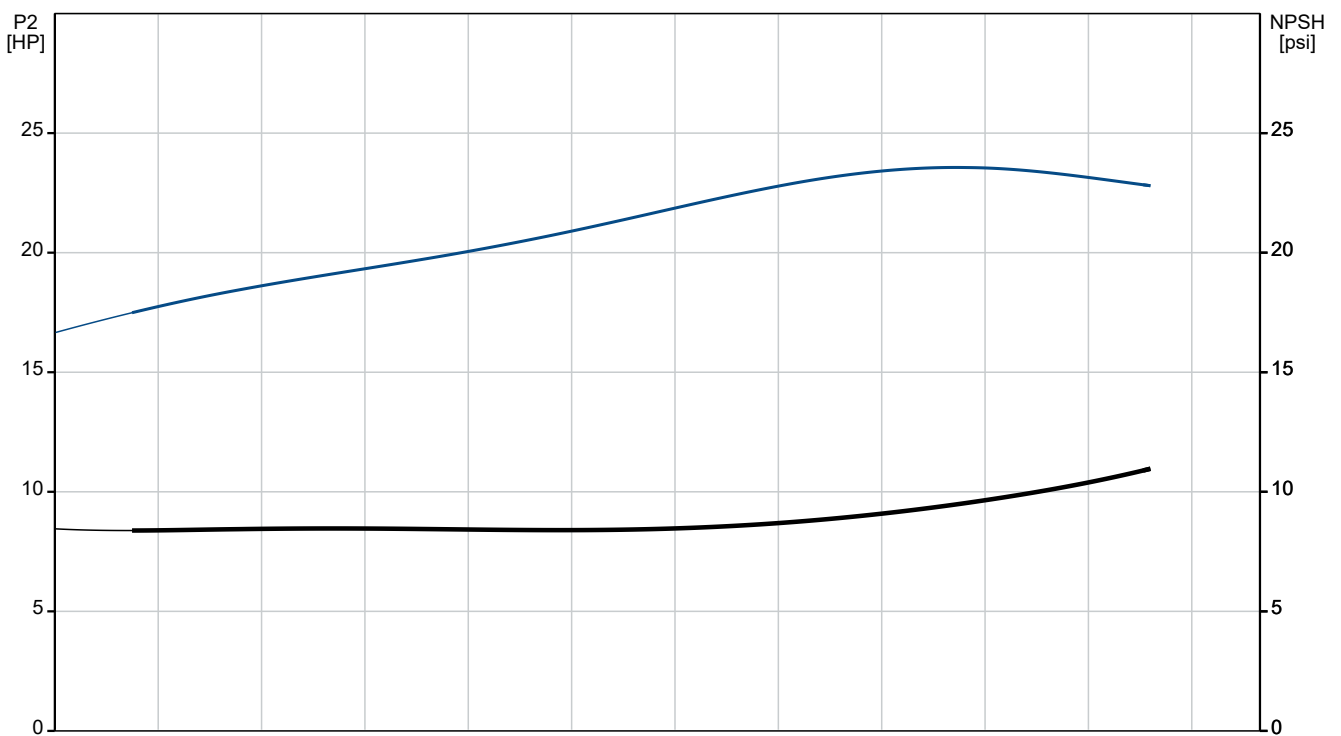
| Qty. | Description |
|------|-------------|
|------|-------------|

| | |
|---|---|
| 1 | <div>Motor: Stainless steel DIN W.-Nr. 1.4539 AISI 904L</div> <div>Sleeve: Stainless steel SAF 2205 EN 1.4462</div> <div>Installation: Maximum operating pressure: 1199.46 psi Maximum permissible inlet pressure: 1189.31 psi Maximum outlet pressure: 1189.31 psi Pipe connection standard: PJE Pipe connection: 139 mm</div> <div>Electrical data: Rated power - P2: 25 HP Mains frequency: 60 Hz Rated voltage: 3 x 440-480 V Service factor: 1.15 Rated current: 33.5-32.5 A Rated speed: 3450-3470-3480 rpm Method of start: DOL Enclosure class (IEC 34-5): IP66</div> <div>Others: Minimum efficiency index, MEI ≥: -.- Net weight: 354 lb Gross weight: 534 lb Country of origin: DK Custom tariff no.: 8413.70.2004</div> |
|---|---|

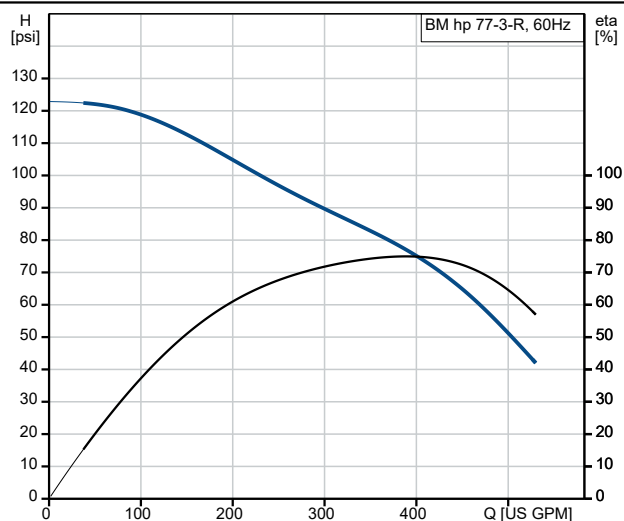
96293304 BM hp 77-3-R NBR 60 Hz



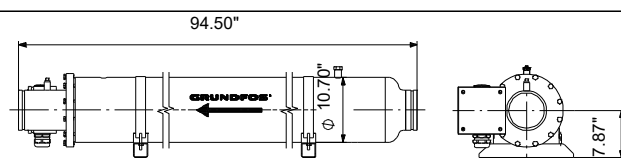
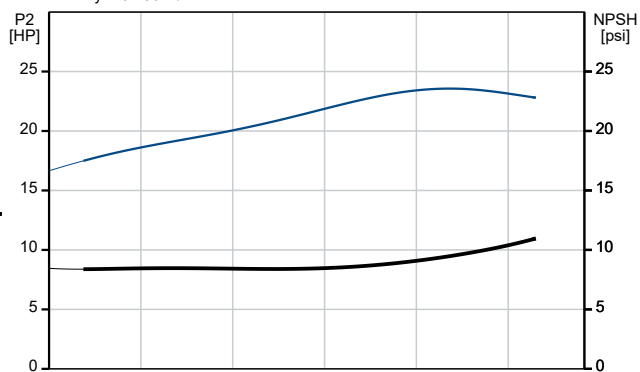
Pumped liquid = Water
 Liquid temperature during operation = 140 °F
 Density = 61.35 lb/ft³



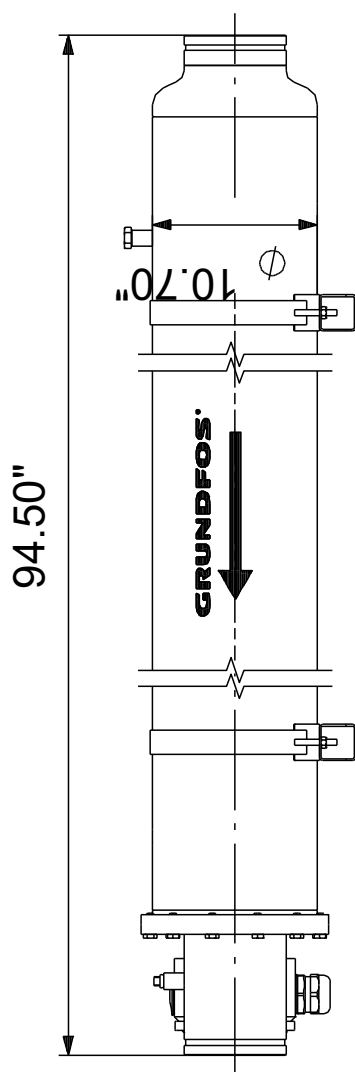
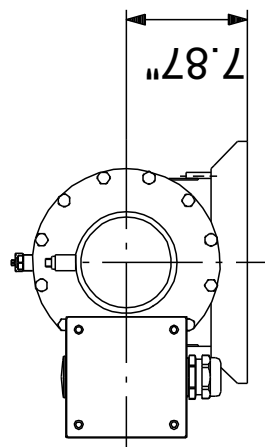
| Description | Value |
|-------------------------------------|--------------------|
| General information: | |
| Product name: | BM hp 77-3-R NBR |
| Product No: | 96293304 |
| EAN number: | 5700831410140 |
| Technical: | |
| Rated flow: | 405 US GPM |
| Rated head: | 71.32 psi |
| Stages: | 3 |
| Curve tolerance: | ISO9906:2012 3B |
| Model: | A |
| Materials: | |
| Pump: | Stainless steel |
| | DIN W.-Nr. 1.4539 |
| | AISI 904L |
| Impeller: | Stainless steel |
| | EN 1.4539 |
| | AISI 904L |
| Motor: | Stainless steel |
| | DIN W.-Nr. 1.4539 |
| | AISI 904L |
| Code for rubber: | NBR |
| Sleeve: | Stainless steel |
| | SAF 2205 |
| | EN 1.4462 |
| Installation: | |
| Maximum operating pressure: | 1199.46 psi |
| Maximum permissible inlet pressure: | 1189.31 psi |
| Maximum outlet pressure: | 1189.31 psi |
| Pipe connection standard: | PJE |
| Pipe connection: | 139 mm |
| Liquid: | |
| Pumped liquid: | Water |
| Maximum liquid temperature: | 104 °F |
| Selected liquid temperature: | 140 °F |
| Density: | 61.35 lb/ft³ |
| Electrical data: | |
| Rated power - P2: | 25 HP |
| Mains frequency: | 60 Hz |
| Rated voltage: | 3 x 440-480 V |
| Service factor: | 1.15 |
| Rated current: | 33.5-32.5 A |
| Rated speed: | 3450-3470-3480 rpm |
| Method of start: | DOL |
| Enclosure class (IEC 34-5): | IP66 |
| Others: | |
| Minimum efficiency index, MEI ≥: | --- |
| Net weight: | 354 lb |
| Gross weight: | 534 lb |
| Country of origin: | DK |
| Custom tariff no.: | 8413.70.2004 |



Pumped liquid = Water
Liquid temperature during operation = 140 °F
Density = 61.35 lb/ft³



96293304 BM hp 77-3-R NBR 60 Hz



Note! All units are in [in] unless others are stated.
Disclaimer: This simplified dimensional drawing does not show all details.