


Qty.	Description																								
1	<p>BM hp 125-1-R NBR</p>  <p>Product No.: 96293310</p> <p>BM hp is an encapsulated submersible pump that is suitable for applications where a high system pressure is required, as it can handle an inlet pressure up to 80 bar.</p> <p>Therefore, BM hp is ideal for water treatment, liquid transfer, pressure boosting and closed circulation systems with a high static pressure.</p> <p>BM hp pumps are available in R-version, in various sizes and with a large variety in the number of impellers. The range covers BM hp 18 to BM hp 215, a total of nine sizes.</p> <p>Depending on its size and frequency, a BM hp pump can reach a flow rate of 265 or 310 m3/h.</p> <p>BM pumps can increase the system pressure up to 82.7 bar.</p> <p>The pump is supplied with an asynchronous motor, Victaulic connections and a straight pipe for BM 18 and above.</p> <p>The motor is protected by output filters against overvoltage and increased operating temperature.</p> <p>As a result, BM hp is very reliable and durable.</p> <p>The compact design ensures easy maintenance and alignment of the pump.</p> <p>The stainless-steel pump and motor housing ensure an excellent resistance against different types of liquids. The R-version is designed to be highly efficient against corrosive liquids.</p> <p>Two different types of asynchronous motors are available for BM hp pumps: MS 6000 and MMS 8000.</p> <p>The enclosure class is IP68.</p> <p>The motor power ranges from 5.5 to 30 kW.</p> <p>The motor is controlled by a frequency converter and protected by Pt100 sensors.</p> <p>The frequency converter is sold as a separate accessory and must be purchased along with the pump.</p> <p>We recommend a Grundfos CUE frequency converter; however, frequency converters from alternative suppliers can be used as well.</p> <table> <tr> <td>Liquid:</td><td></td></tr> <tr> <td>Pumped liquid:</td><td>Water</td></tr> <tr> <td>Maximum liquid temperature:</td><td>104 °F</td></tr> <tr> <td>Selected liquid temperature:</td><td>140 °F</td></tr> <tr> <td>Density:</td><td>61.35 lb/ft³</td></tr> </table> <table> <tr> <td>Technical:</td><td></td></tr> <tr> <td>Rated flow:</td><td>656 US GPM</td></tr> <tr> <td>Rated head:</td><td>39.16 psi</td></tr> <tr> <td>Curve tolerance:</td><td>ISO9906:2012 3B</td></tr> </table> <table> <tr> <td>Materials:</td><td></td></tr> <tr> <td>Pump:</td><td>Stainless steel DIN W.-Nr. 1.4539 AISI 904L</td></tr> <tr> <td>Impeller:</td><td>Stainless steel EN 1.4539 AISI 904L</td></tr> </table>	Liquid:		Pumped liquid:	Water	Maximum liquid temperature:	104 °F	Selected liquid temperature:	140 °F	Density:	61.35 lb/ft³	Technical:		Rated flow:	656 US GPM	Rated head:	39.16 psi	Curve tolerance:	ISO9906:2012 3B	Materials:		Pump:	Stainless steel DIN W.-Nr. 1.4539 AISI 904L	Impeller:	Stainless steel EN 1.4539 AISI 904L
Liquid:																									
Pumped liquid:	Water																								
Maximum liquid temperature:	104 °F																								
Selected liquid temperature:	140 °F																								
Density:	61.35 lb/ft³																								
Technical:																									
Rated flow:	656 US GPM																								
Rated head:	39.16 psi																								
Curve tolerance:	ISO9906:2012 3B																								
Materials:																									
Pump:	Stainless steel DIN W.-Nr. 1.4539 AISI 904L																								
Impeller:	Stainless steel EN 1.4539 AISI 904L																								



Company name:

Created by:

Phone:

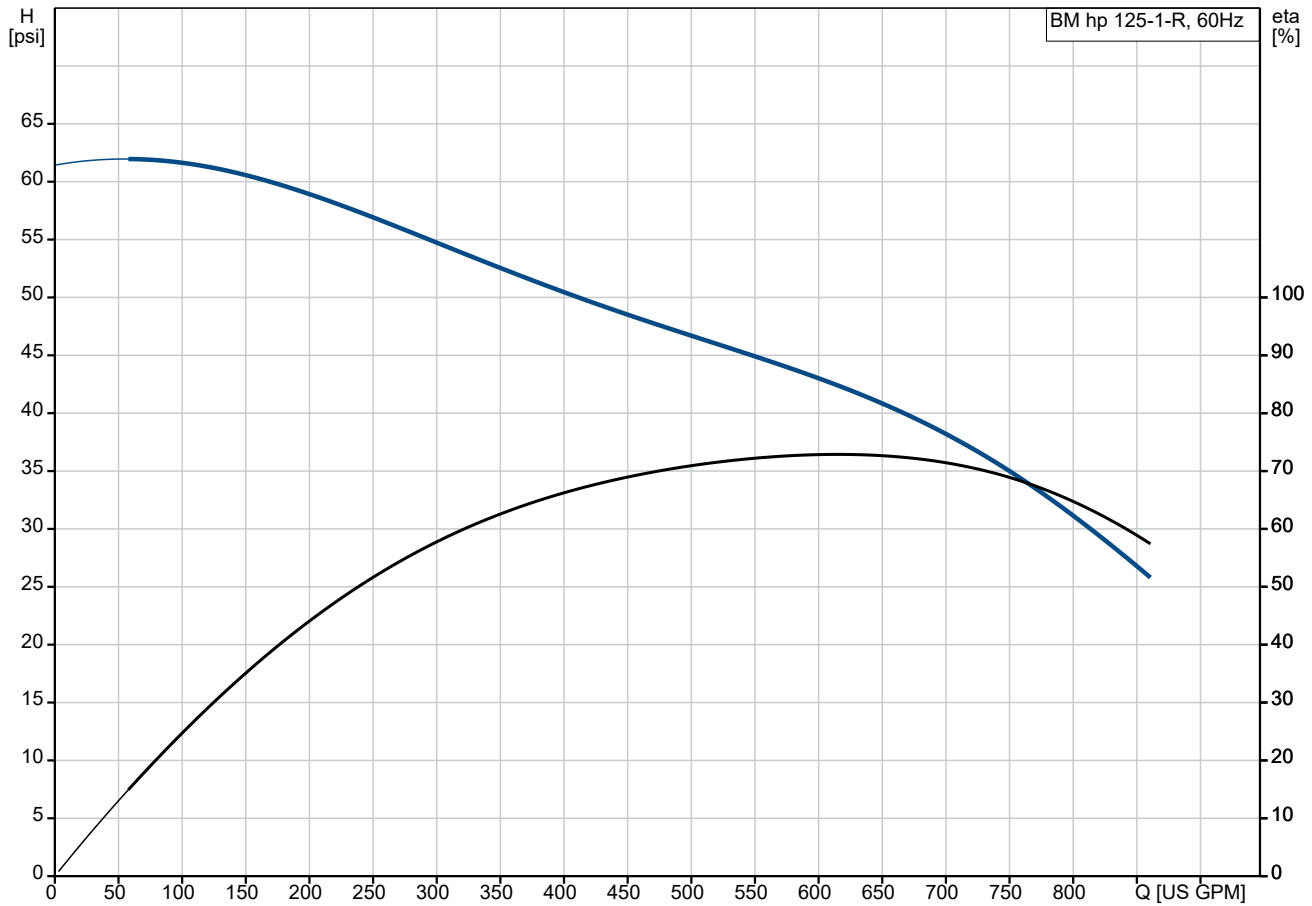
Date:

03/04/2025

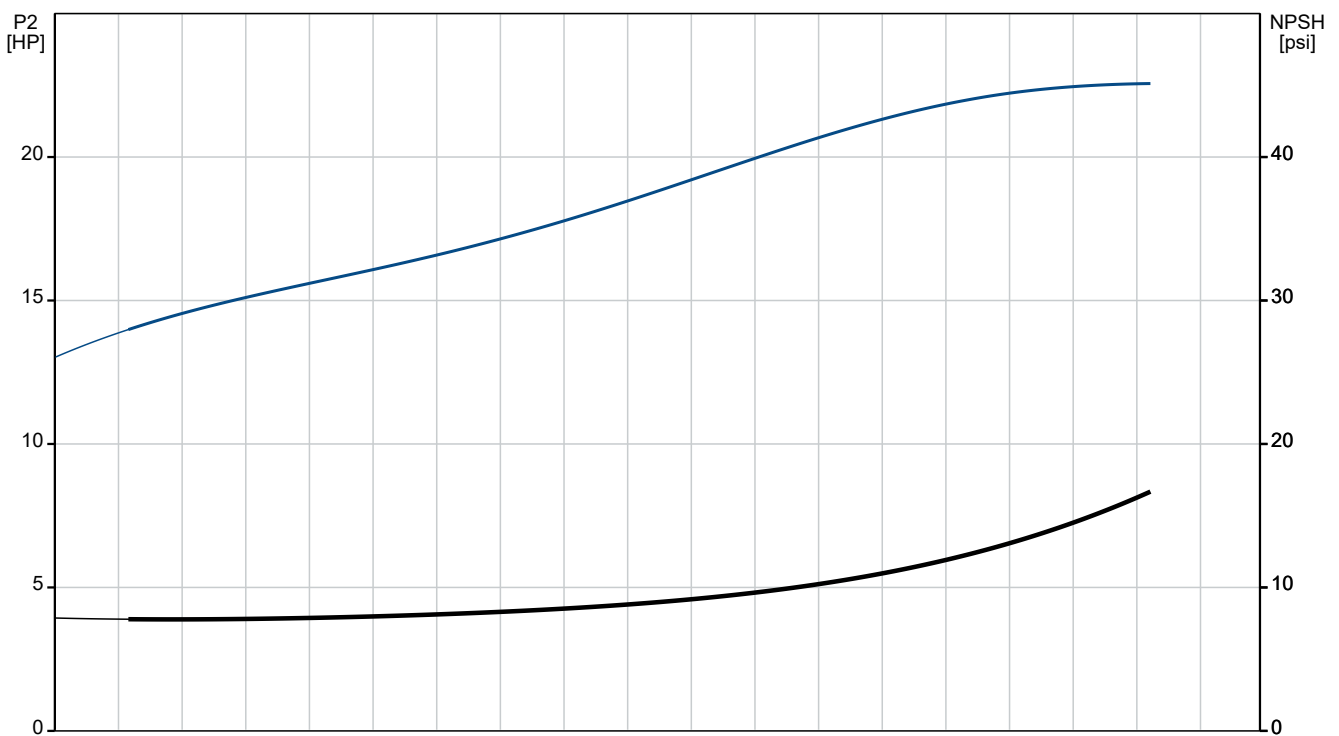
Qty.	Description
------	-------------

1	<div>Motor: Stainless steel DIN W.-Nr. 1.4539 AISI 904L</div> <div>Sleeve: Stainless steel SAF 2205 EN 1.4462</div> <div>Installation: Maximum operating pressure: 1199.46 psi Maximum permissible inlet pressure: 1189.31 psi Maximum outlet pressure: 1189.31 psi Pipe connection standard: PJE Pipe connection: 168 mm</div> <div>Electrical data: Rated power - P2: 25 HP Mains frequency: 60 Hz Rated voltage: 3 x 440-480 V Service factor: 1.15 Rated current: 33.5-32.5 A Rated speed: 3450-3470-3480 rpm Method of start: DOL Enclosure class (IEC 34-5): IP66</div> <div>Others: Minimum efficiency index, MEI ≥: -- Net weight: 367 lb Gross weight: 547 lb Custom tariff no.: 8413.70.2004</div>
---	--

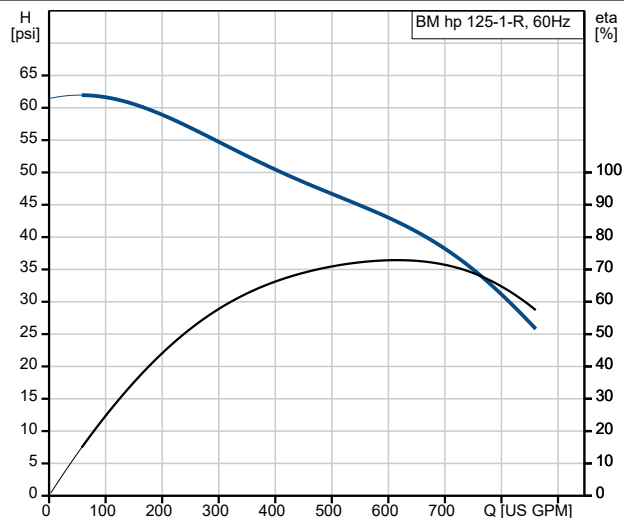
96293310 BM hp 125-1-R NBR 60 Hz



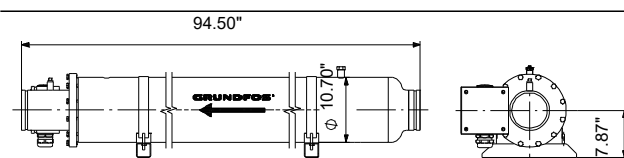
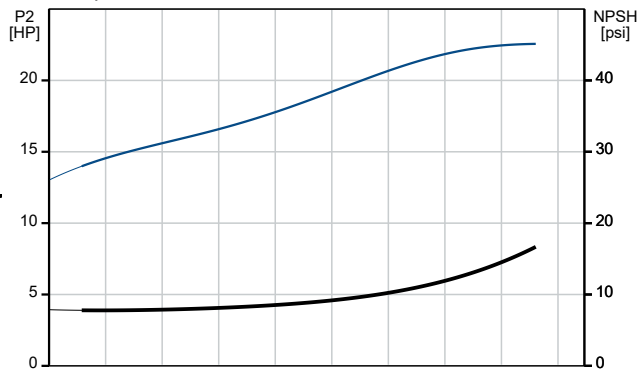
Pumped liquid = Water
 Liquid temperature during operation = 140 °F
 Density = 61.35 lb/ft³



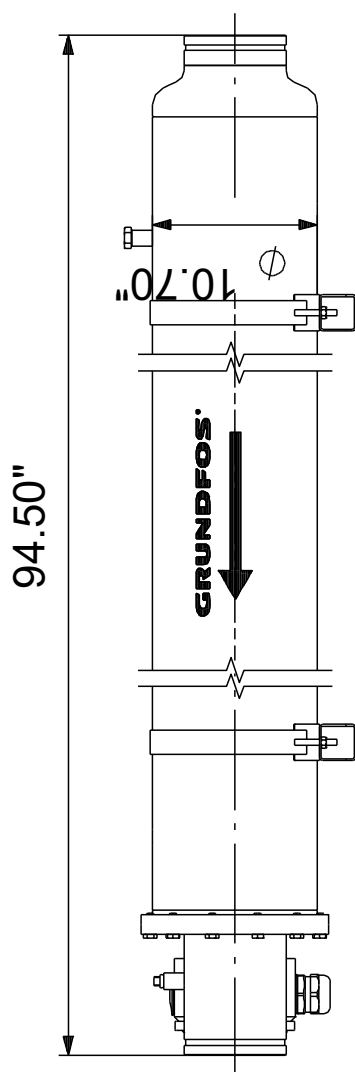
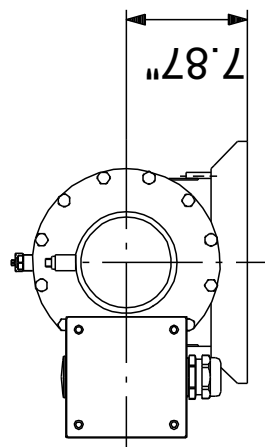
Description	Value
General information:	
Product name:	BM hp 125-1-R NBR
Product No:	96293310
EAN number:	5700831410294
Technical:	
Rated flow:	656 US GPM
Rated head:	39.16 psi
Stages:	1
Curve tolerance:	ISO9906:2012 3B
Model:	A
Materials:	
Pump:	Stainless steel
	DIN W.-Nr. 1.4539
	AISI 904L
Impeller:	Stainless steel
	EN 1.4539
	AISI 904L
Motor:	Stainless steel
	DIN W.-Nr. 1.4539
	AISI 904L
Code for rubber:	NBR
Sleeve:	Stainless steel
	SAF 2205
	EN 1.4462
Installation:	
Maximum operating pressure:	1199.46 psi
Maximum permissible inlet pressure:	1189.31 psi
Maximum outlet pressure:	1189.31 psi
Pipe connection standard:	PJE
Pipe connection:	168 mm
Liquid:	
Pumped liquid:	Water
Maximum liquid temperature:	104 °F
Selected liquid temperature:	140 °F
Density:	61.35 lb/ft³
Electrical data:	
Rated power - P2:	25 HP
Mains frequency:	60 Hz
Rated voltage:	3 x 440-480 V
Service factor:	1.15
Rated current:	33.5-32.5 A
Rated speed:	3450-3470-3480 rpm
Method of start:	DOL
Enclosure class (IEC 34-5):	IP66
Others:	
Minimum efficiency index, MEI ≥:	---
Net weight:	367 lb
Gross weight:	547 lb
Custom tariff no.:	8413.70.2004



Pumped liquid = Water
Liquid temperature during operation = 140 °F
Density = 61.35 lb/ft³



96293310 BM hp 125-1-R NBR 60 Hz



Note! All units are in [in] unless others are stated.
Disclaimer: This simplified dimensional drawing does not show all details.