

## Submittal Data

|                       |                  |             |
|-----------------------|------------------|-------------|
| PROJECT:              | UNIT TAG:        | QUANTITY:   |
| REPRESENTATIVE: _____ | TYPE OF SERVICE: | DATE: _____ |
| ENGINEER:             | SUBMITTED BY:    | DATE:       |
| CONTRACTOR:           | APPROVED BY:     | DATE:       |
|                       | ORDER NO.:       | DATE:       |

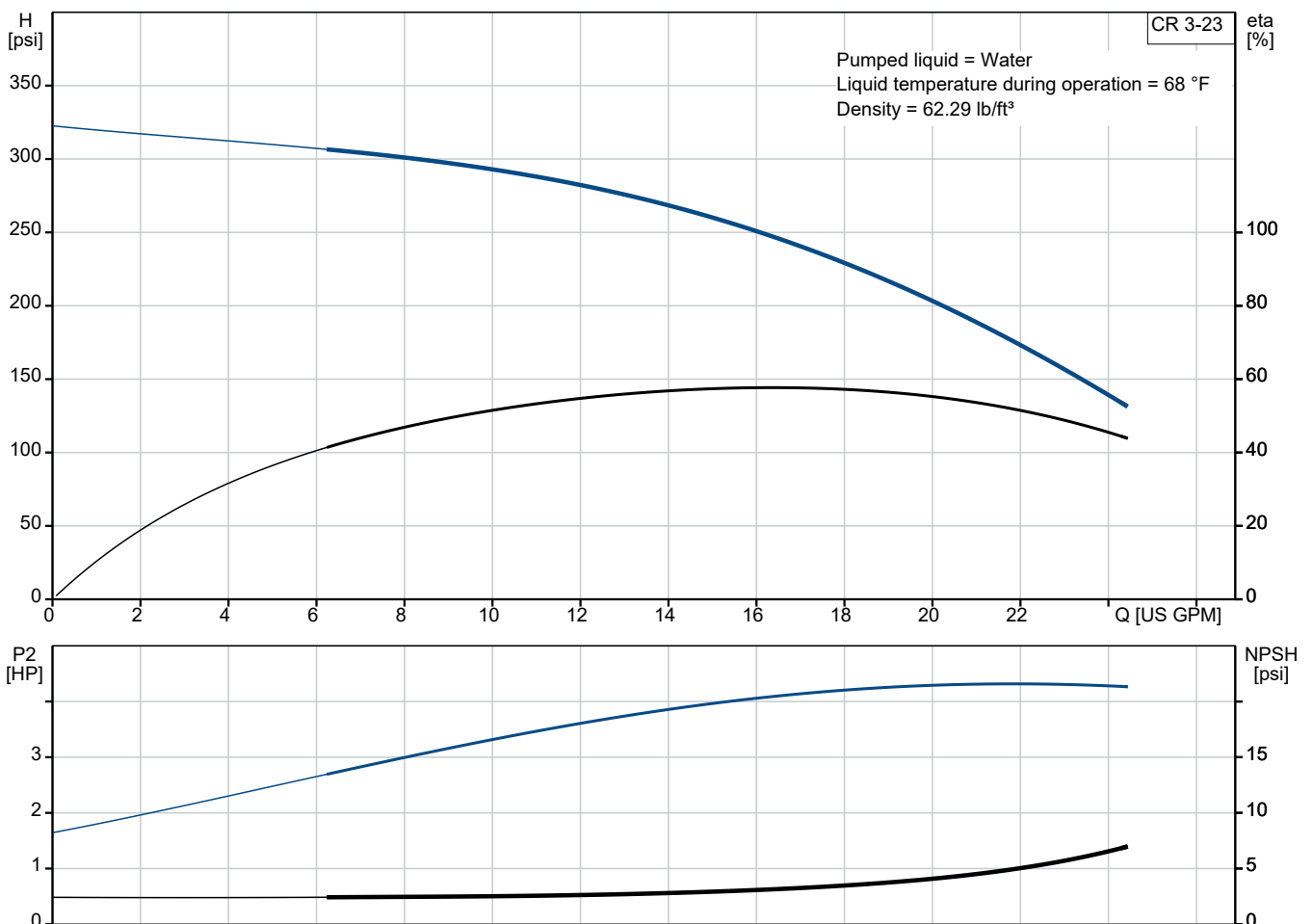


CR 3-23 A-FGJ-A-E-HQQE

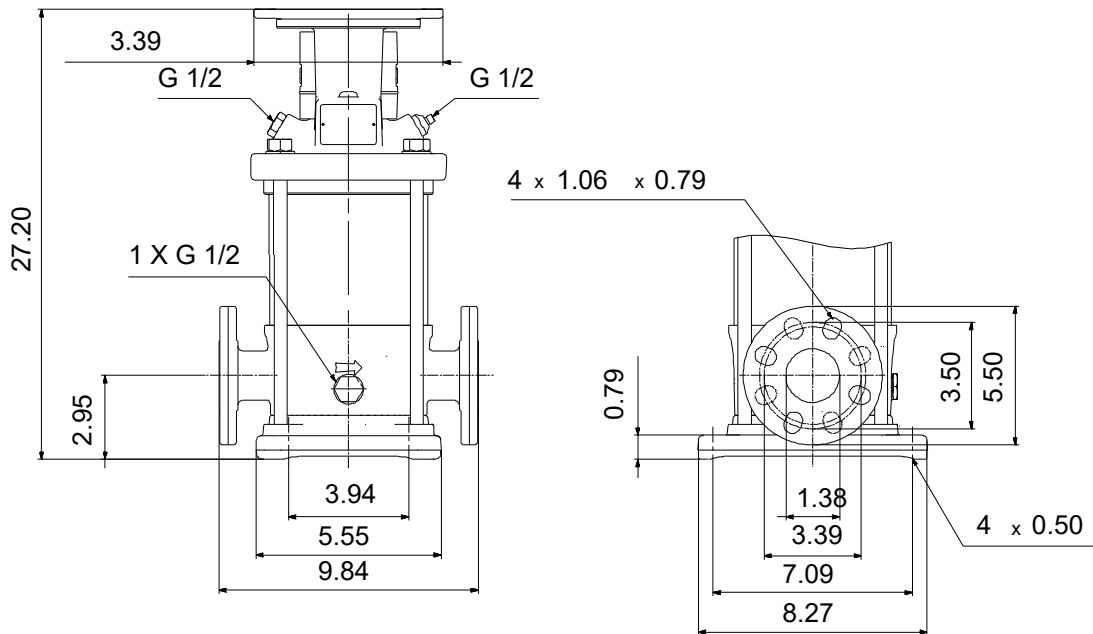
Vertical, multistage centrifugal pump with suction and discharge ports on the same level. The pump head and base are in cast iron - all other wetted parts are in stainless steel (EN 1.4301)

Note! Product picture may differ from actual product

| Conditions of Service |       | Pump Data                    |                  | Motor Data       |       |
|-----------------------|-------|------------------------------|------------------|------------------|-------|
| Efficiency:           | %     | Max pressure at stated temp: | 363 psi / 250 °F | Mains frequency: | 60 Hz |
| Liquid:               | Water | Liquid temperature range:    | -4 .. 248 °F     |                  |       |
| Temperature:          | 68 °F | Shaft seal:                  | HQQE             |                  |       |
| NPSH required:        | psi   | Product number:              | 96083197         |                  |       |
| Specific Gravity:     | 1.000 |                              |                  |                  |       |



## Submittal Data



### Materials:

|                  |   |
|------------------|---|
| Base:            | Cast iron<br>EN 1561 EN-GJL-200<br>ASTM A48-25B |
| Impeller:        | Stainless steel<br>AISI 304<br>EN 1.4301        |
| Material code:   | A   |
| Code for rubber: | E   |

## Qty. Description

1 CR 3-23 A-FGJ-A-E-HQQE



Note! Product picture may differ from actual product

Product No.: [96083197](#)

Pump without motor

Vertical, multistage centrifugal pump with inlet and outlet ports on same the level (inline). The pump head and base are in cast iron – all other wetted parts are in stainless steel. A cartridge shaft seal ensures high reliability, safe handling, and easy access and service. Power transmission is via a rigid split coupling. Pipe connection is via combined DIN-ANSI-JIS flanges.

### Further product details

Steel, cast iron and aluminium components have an epoxy-based coating made in a cathodic electro-deposition (CED) process.

CED is a high-quality dip-painting process where an electrical field around the products ensures deposition of paint particles as a thin, well-controlled layer on the surface.

An integral part of the process is a pretreatment.

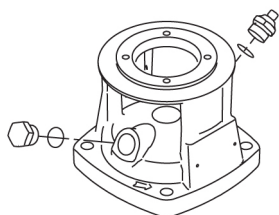
The entire process consists of these elements:

- 1) Alkaline-based cleaning.
- 2) Zinc phosphating.
- 3) Cathodic electro-deposition.
- 4) Curing to a dry film thickness 18-22 my m.

The colour code for the finished product is NCS 9000/RAL 9005.

### Pump

The pump head, pump head cover and flange for motor mounting is made in one piece. The pump head has a combined 1/2" priming plug and vent screw.



The pump is fitted with a balanced O-ring seal unit with a rigid torque-transmission system.

This seal type is assembled in a cartridge unit which makes replacement safe and easy.

Due to the balancing, this seal type is suitable for high-pressure applications.

The cartridge construction also protects the pump shaft from possible wear from a dynamic O-ring between pump shaft and shaft seal.

Seal faces:

- Rotating seal ring material: silicon carbide (SiC)
- Stationary seat material: silicon carbide (SiC)

This material pairing is used where higher corrosion resistance is required. The high hardness of this material pairing offers good resistance against abrasive particles.

Secondary seal material: EPDM (ethylene-propylene rubber)

EPDM has excellent resistance to hot water. EPDM is not suitable for mineral oils.

| Qty. | Description |
|------|-------------|
|------|-------------|

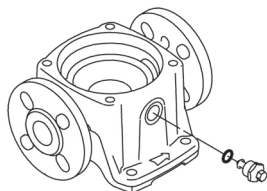
|   |  |
|---|--|
| 1 |  <p>The shaft seal is screwed into the pump head.</p> <p>The chambers and impellers are made of stainless-steel sheet. The chambers are provided with a PTFE neck ring offering improved sealing and high efficiency. The impellers have smooth surfaces, and the shape of the blades ensure a high efficiency.</p> <p>The base is made of cast iron. The flanges and base are cast in one piece. The outlet side of the base has a combined drain plug and bypass valve. The pump is secured to the foundation by four bolts through the base plate.</p>  <p><b>Motor</b></p> <p>The pump is sold without motor.</p> <p><b>Technical data</b></p> <p>Liquid:</p> <p>Pumped liquid: Water</p> <p>Liquid temperature range: -4 .. 248 °F</p> <p>Selected liquid temperature: 68 °F</p> <p>Density: 62.29 lb/ft³</p> <p>Technical:</p> <p>Pump speed on which pump data are based: 3461 rpm</p> <p>Rated flow: 15.4 US GPM</p> <p>Rated head: 235.4 psi</p> <p>Pump orientation: Vertical</p> <p>Shaft seal arrangement: Single</p> <p>Primary shaft seal: HQQE</p> <p>Code for shaft seal: HQQE</p> <p>Approvals: CE</p> <p>Approvals for drinking water: NSF/ANSI 61</p> <p>Curve tolerance: ISO9906:2012 3B</p> <p>Materials:</p> <p>Base: Cast iron<br/>EN 1561 EN-GJL-200<br/>ASTM A48-25B</p> <p>Impeller: Stainless steel<br/>EN 1.4301<br/>AISI 304</p> <p>Bearing: SIC</p> <p>Installation:</p> <p>Maximum operating pressure: 362.59 psi</p> |
|---|--|



The shaft seal is screwed into the pump head.

The chambers and impellers are made of stainless-steel sheet. The chambers are provided with a PTFE neck ring offering improved sealing and high efficiency. The impellers have smooth surfaces, and the shape of the blades ensure a high efficiency.

The base is made of cast iron. The flanges and base are cast in one piece. The outlet side of the base has a combined drain plug and bypass valve. The pump is secured to the foundation by four bolts through the base plate.



**Motor**

The pump is sold without motor.

**Technical data**

Liquid:

Pumped liquid:

Water

Liquid temperature range:

-4 .. 248 °F

Selected liquid temperature:

68 °F

Density:

62.29 lb/ft³

Technical:

Pump speed on which pump data are based: 3461 rpm

Rated flow:

15.4 US GPM

Rated head:

235.4 psi

Pump orientation:

Vertical

Shaft seal arrangement:

Single

Primary shaft seal:

HQQE

Code for shaft seal:

HQQE

Approvals:

CE

Approvals for drinking water:

NSF/ANSI 61

Curve tolerance:

ISO9906:2012 3B

Materials:

Base:

Cast iron

EN 1561 EN-GJL-200

ASTM A48-25B

Impeller:

Stainless steel

EN 1.4301

AISI 304

Bearing:

SIC

Installation:

Maximum operating pressure:

362.59 psi



Company name:

Created by:

Phone:

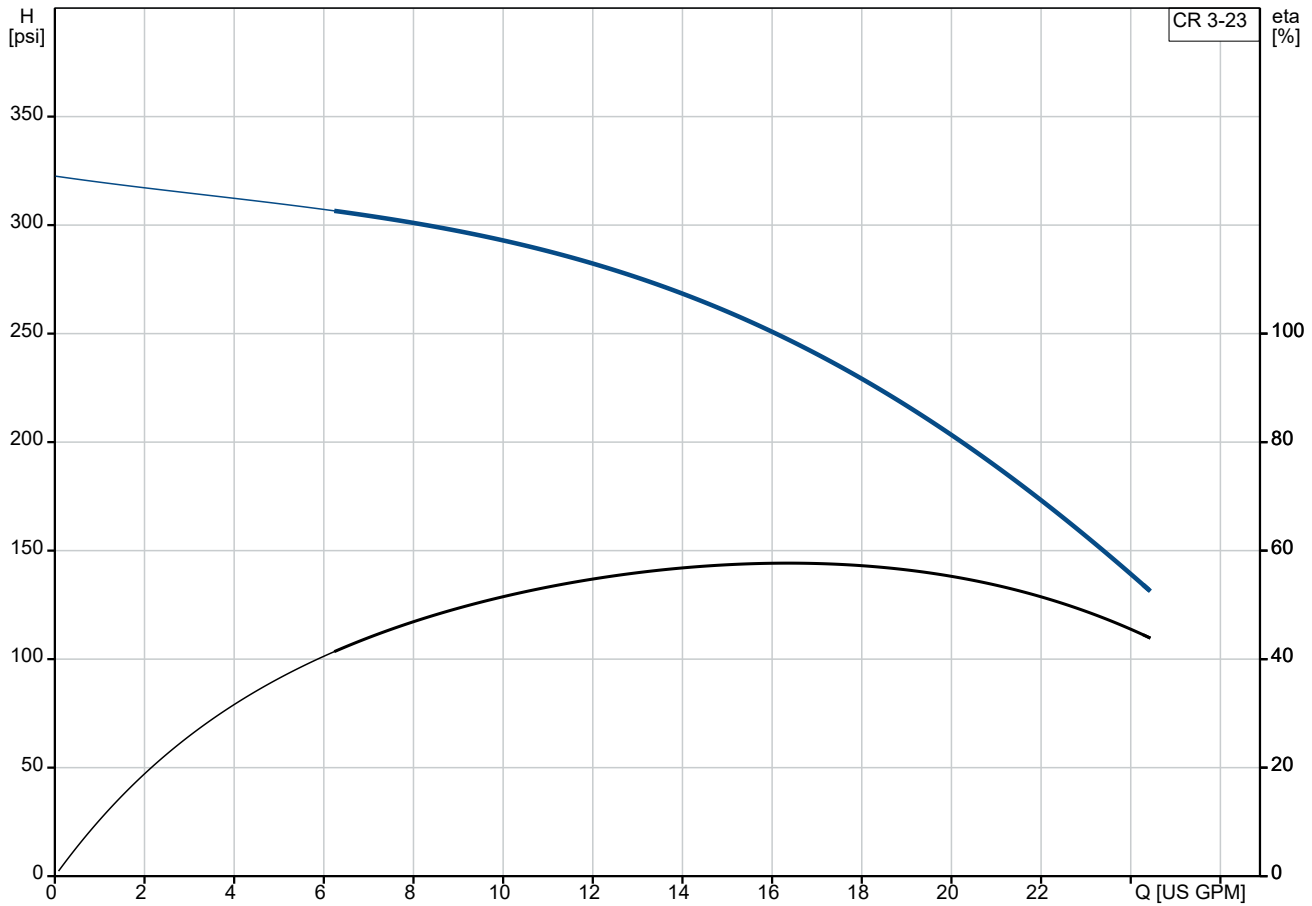
Date:

28/05/2025

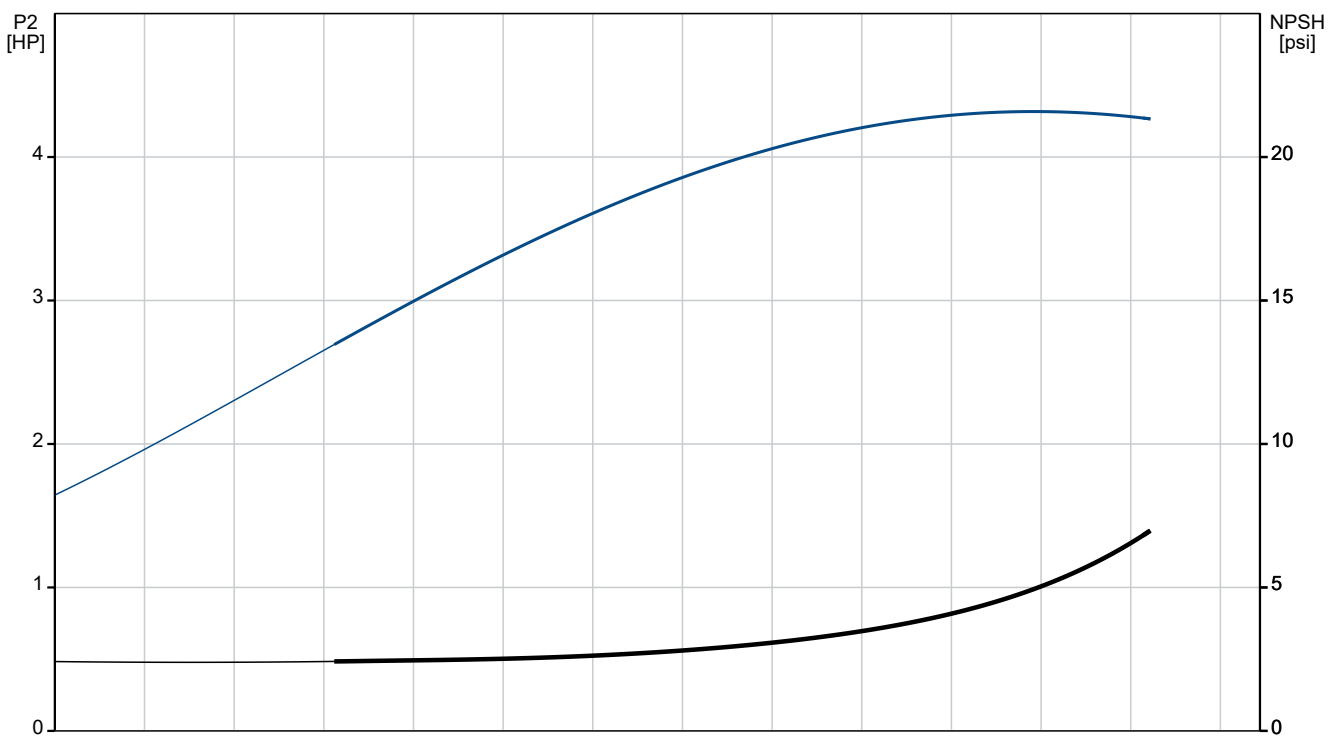
| Qty. | Description |
|------|-------------|
|------|-------------|

|   |  |
|---|--|
| 1 | Max pressure at stated temp: 363 psi / 250 °F<br>363 psi / -4 °F<br>Type of connection: DIN / ANSI / JIS<br>Size of inlet connection: DN 25/32<br>1 1/4 inch<br>Size of outlet connection: DN 25/32<br>1 1/4 inch<br>Pressure rating for connection: PN 25<br>Flange rating inlet: 250 lb<br>Flange size for motor: 182TC<br><br>Electrical data:<br>Motor standard: NEMA<br>Power (P2) required by pump: 5 HP<br><br>Controls:<br>Frequency converter: None<br><br>Others:<br>Net weight: 63.3 lb<br>Gross weight: 81.2 lb<br>Shipping volume: 6.11 ft³<br>Country of origin: US<br>Custom tariff no.: 8413.70.2040 |
|---|--|

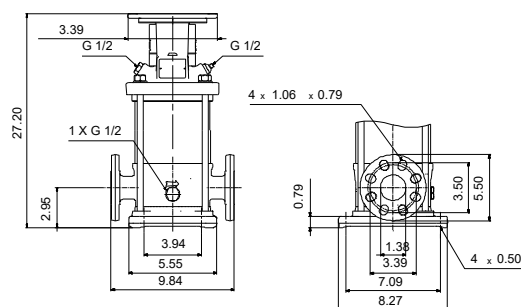
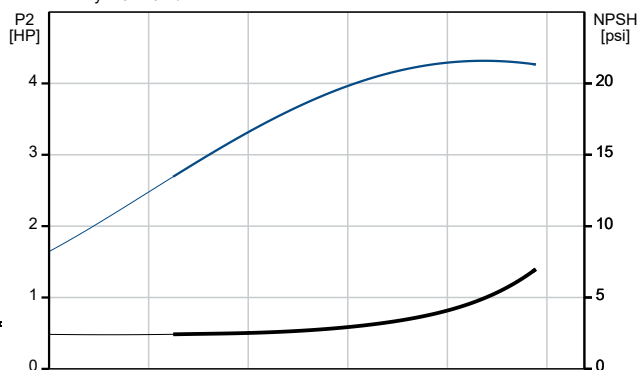
## 96083197 CR 3-23 A-FGJ-A-E-HQQE 60 Hz



Pumped liquid = Water  
Liquid temperature during operation = 68 °F  
Density = 62.29 lb/ft³



| Description                              | Value   |
|--|---|
| <b>General information:</b>              |   |
| Product name:                            | CR 3-23<br>A-FGJ-A-E-HQQE                       |
| Product No:                              | 96083197  |
| EAN number:                              | 5700395183658                                   |
| <b>Technical:</b>                        |   |
| Pump speed on which pump data are based: | 3461 rpm  |
| Rated flow:                              | 15.4 US GPM                                     |
| Rated head:                              | 235.4 psi                                       |
| Maximum head:                            | 313.4 psi                                       |
| Stages:                                  | 23  |
| Impellers:                               | 23  |
| Number of reduced-diameter impellers:    | 0   |
| Low NPSH:                                | N   |
| Pump orientation:                        | Vertical  |
| Shaft seal arrangement:                  | Single  |
| Primary shaft seal:                      | HQQE  |
| Code for shaft seal:                     | HQQE  |
| Approvals:                               | CE  |
| Approvals for drinking water:            | NSF/ANSI 61                                     |
| Curve tolerance:                         | ISO9906:2012 3B                                 |
| Pump version:                            | A   |
| Model:                                   | A   |
| <b>Materials:</b>                        |   |
| Base:                                    | Cast iron<br>EN 1561 EN-GJL-200<br>ASTM A48-25B |
| Impeller:                                | Stainless steel<br>EN 1.4301<br>AISI 304        |
| Material code:                           | A   |
| Code for rubber:                         | E   |
| Bearing:                                 | SIC   |
| <b>Installation:</b>                     |   |
| Maximum operating pressure:              | 362.59 psi                                      |
| Max pressure at stated temp:             | 363 psi / 250 °F<br>363 psi / -4 °F             |
| Type of connection:                      | DIN / ANSI / JIS                                |
| Size of inlet connection:                | DN 25/32<br>1 1/4 inch                          |
| Size of outlet connection:               | DN 25/32<br>1 1/4 inch                          |
| Pressure rating for connection:          | PN 25   |
| Flange rating inlet:                     | 250 lb  |
| Flange size for motor:                   | 182TC   |
| Connect code:                            | FGJ   |
| <b>Liquid:</b>                           |   |
| Pumped liquid:                           | Water   |
| Liquid temperature range:                | -4 .. 248 °F                                    |
| Selected liquid temperature:             | 68 °F   |
| Density:                                 | 62.29 lb/ft³                                    |
| <b>Electrical data:</b>                  |   |
| Motor standard:                          | NEMA  |
| Power (P2) required by pump:             | 5 HP  |
| <b>Controls:</b>                         |   |
| Frequency converter:                     | None  |
| <b>Others:</b>                           |   |





Company name:

Created by:

Phone:

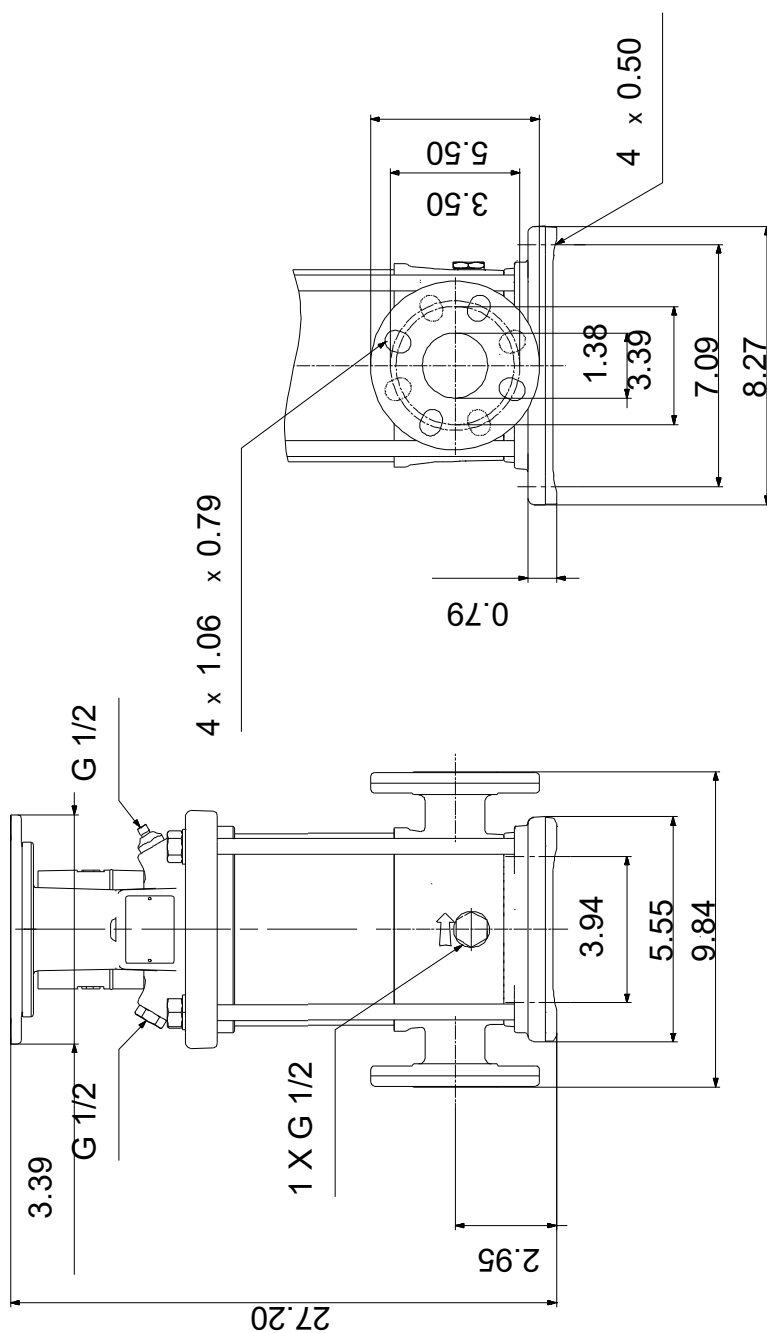
Date:

28/05/2025

| Description        | Value                |
|--------------------|----------------------|
| Net weight:        | 63.3 lb              |
| Gross weight:      | 81.2 lb              |
| Shipping volume:   | 6.11 ft <sup>3</sup> |
| Country of origin: | US                   |
| Custom tariff no.: | 8413.70.2040         |



## 96083197 CR 3-23 A-FGJ-A-E-HQQE 60 Hz



Note! All units are in [in] unless others are stated.

Disclaimer: This simplified dimensional drawing does not show all details.