

Company:
Name:
Date: 07/14/2025



Pump:

Size: 2x2.5-10A
Type: FM2 Cast Iron
Synch Speed: 1800 rpm
Dia: 8 in
Curve: ---
Impeller: CC-IMPELLER-28

Dimensions:
Suction: 2.5 in
Discharge: 2 in

Fluid:

Name: Water
SG: 1
Density: 62.4 lb/ft³
Viscosity: 1.1 cP
Temperature: 60 °F

Vapor Pressure: 0.256 psi a
Atm Pressure: 14.7 psi a
Margin Ratio: 1

Search Criteria:

Flow: --- Near Miss: ---
Head: --- Static Head: 0 ft

Pump Limits:

Temperature: --- Sphere Size: 0.25 in
Wkg Pressure: ---

Motor:

Standard: NEMA Size: 5 hp
Enclosure: TEFC Speed: 1800 rpm
Frame: 184T
Sizing Criteria: Max Power on Design Curve

Pump Selection Warnings:

None

--- Duty Point ---

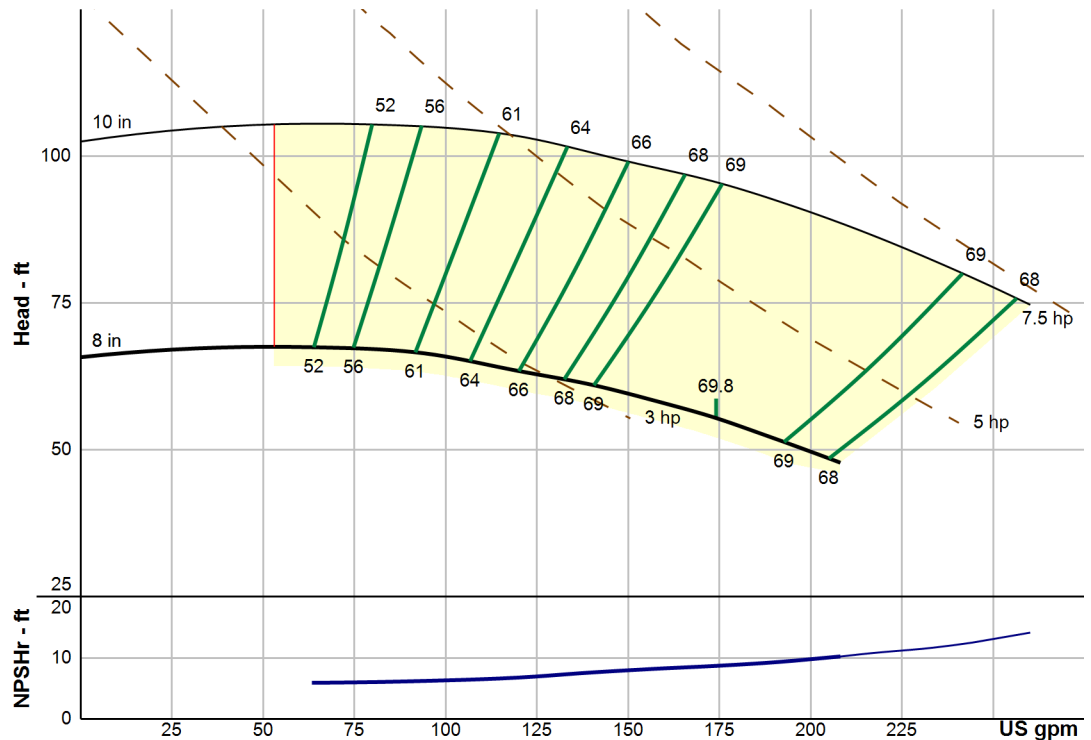
Flow: 174 US gpm
Head: 55.4 ft
Eff: 69.8%
Power: 3.49 hp
NPSHr: 8.69 ft
Speed: 1800 rpm

--- Design Curve ---

Shutoff Head: 65.8 ft
Shutoff dP: 28.5 psi
Min Flow: 53 US gpm
BEP: 69.8% @ 174 US gpm
NOL Power:
3.71 hp @ 208 US gpm

--- Max Curve ---

Max Power:
7.25 hp @ 260 US gpm



Performance Evaluation:

Flow	Speed	Head	Efficiency	Power	NPSHr
US gpm	rpm	ft	%	hp	ft
200	1800	49.7	68.4	3.66	9.71
167	1800	56.7	69.8	3.42	8.48
134	1800	61.8	68	3.07	7.34
100	1800	65.8	62.6	2.64	6.34
66.8	1800	67.4	52.9	2.14	5.93