



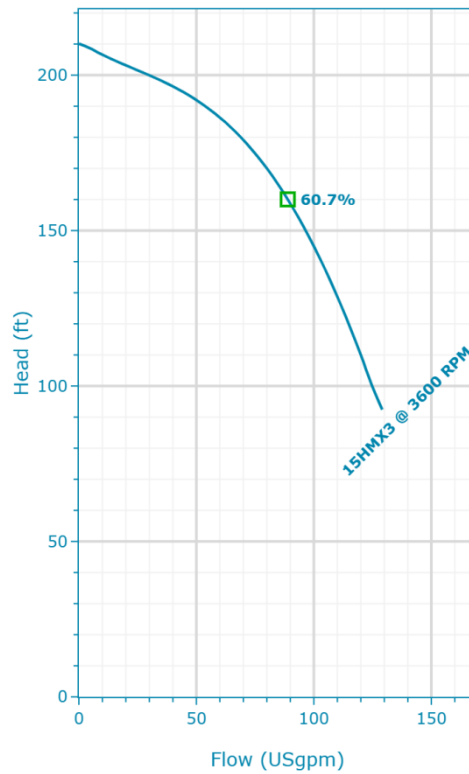
15HMX03N40TM6BQE

Created On: 8/6/25

15HMX03N40TM6BQE | Configuration Summary



Powered by Xylem's hydrovar® X Smart Motor, e-HMX Smart Pumps offer customizable pumping solutions designed to deliver ultra-premium efficiency, connectivity, and simplicity right out of the box. e-HMX Smart Pumps integrate decades of expertise and know-how in pumping solutions to bring the right combination of motors, variable speed drive and hydraulic pumps in one comprehensive, highly efficient package. It is a versatile horizontal multistage pump designed for best-in-class efficiency and superior durability to reduce the total cost of ownership. Customizable options mean you get exactly the right pump for your application, exactly when you need it.



PUMP

Pump Size
15HM

Construction Design
Sleeve

MATERIALS

Construction
Stainless Steel (AISI 316)

SEAL

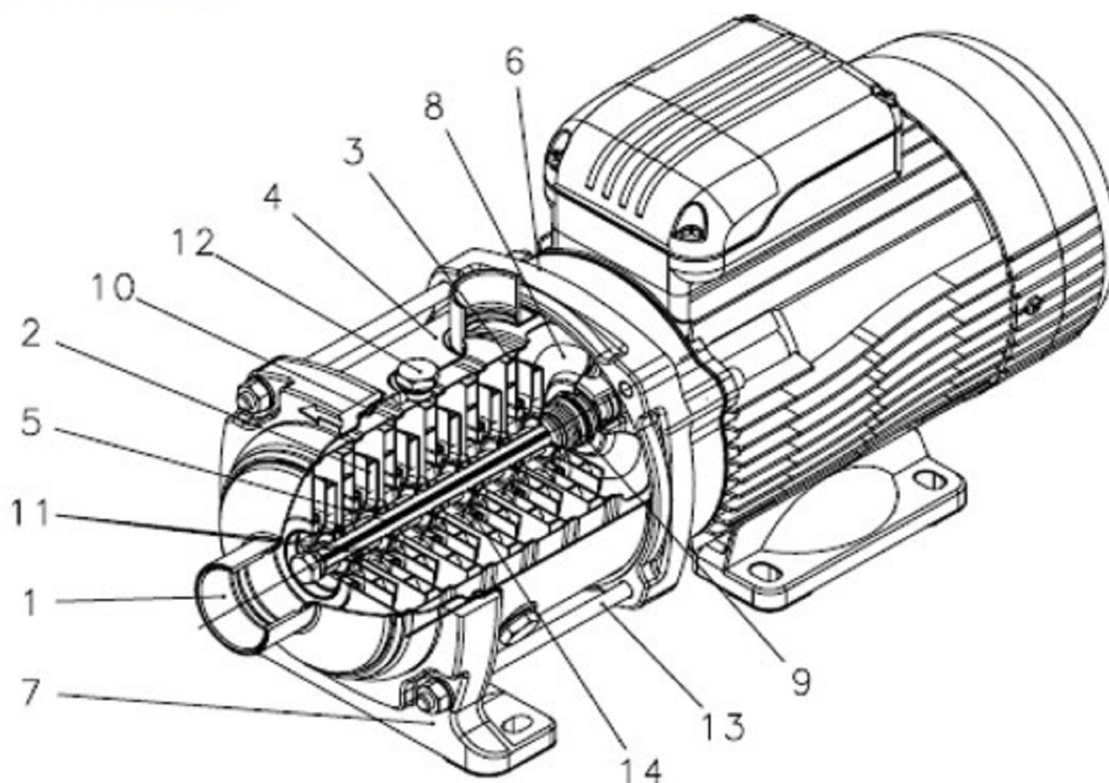
Type of Seal	Rotating Face
Mechanical Seals	Carbon
	Stationary Face
	Silicon Carbide
	Elastomers
	EPDM
	Metal Components
	316 SS

MOTOR

Frequency (Hz)	Power
60	5.4 hp
Poles	Phase (~)
4	3
Enclosure	Voltage
TEFC	380-480 V
	Frame Size
	100

15HMX03N40TM6BQE | Product Details

(SLEEVE DESIGN)



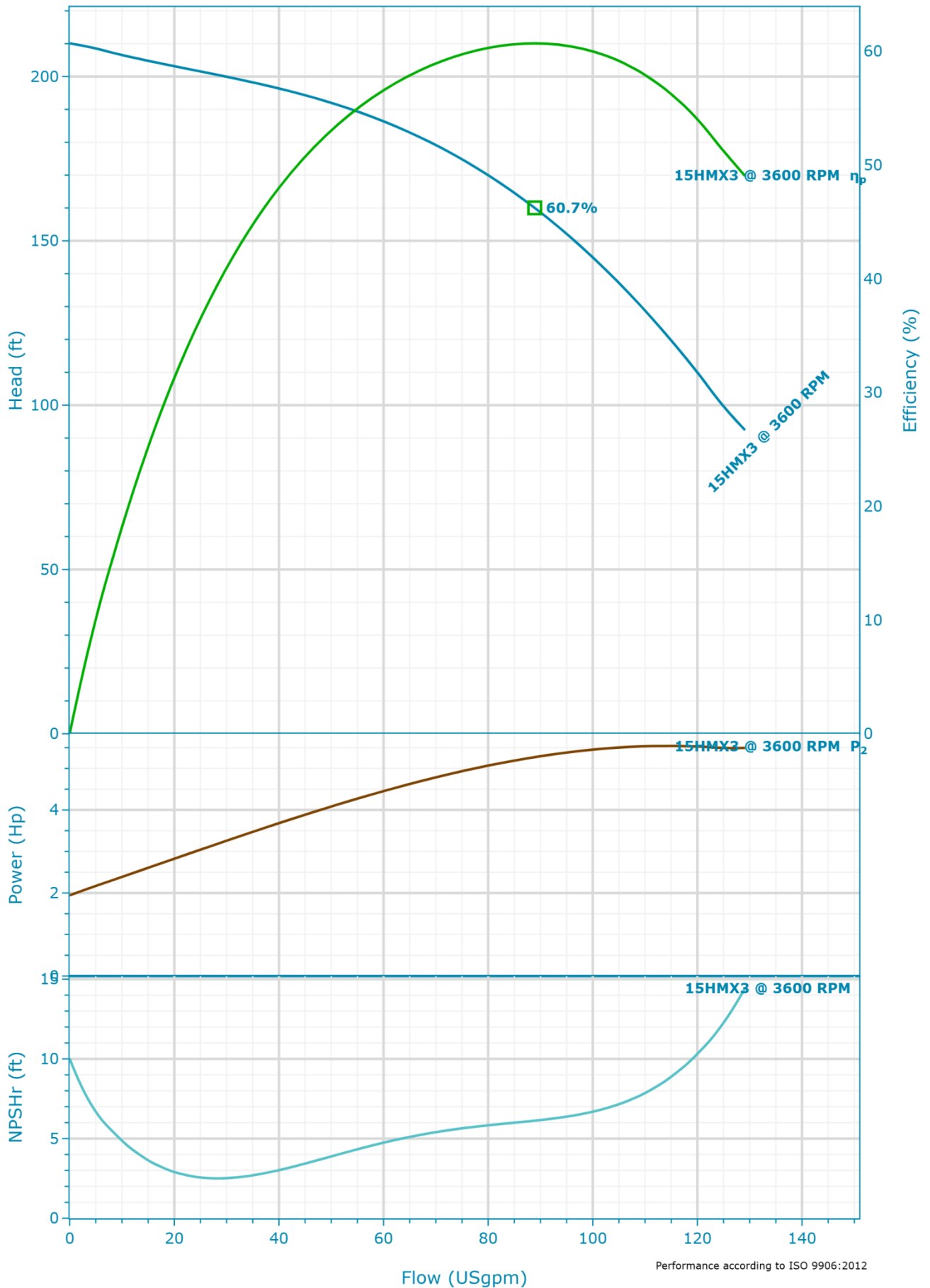
Construction Materials

Head (1) Stainless steel / AISI 316L	Shaft (5) Stainless steel / AISI 316	Mechanical seal (9) See Seal Section	Tie rods (13) Stainless steel / AISI 431
Impeller (2) Stainless steel / AISI 316L	Adapter (6) Aluminium	Elastomers (10) See Seal Section	Wear ring (14) Technopolymer (PPS)
Diffuser and upper spacer (3) Stainless steel / AISI 316L	Ring with foot (7) Aluminium	Shaft sleeve and bushing (11) Tungsten carbide	
Outer sleeve (4) Stainless steel / AISI 316L	Seal housing (8) Stainless steel / AISI 316L	Fill / drain plugs (12) Stainless steel / AISI 316L	

Motor

Enclosure TEFC	Rated Voltage 380-480 V	Phase 3	SLA 7.7-6.6
Rated Power 5.5 hp	Frame Size 100	FLA 7.7-6.6	Service Factor 1

15HMx03N40TM6BQE | Hydraulic Data & Performance Curve



Selection

Series	Standby Pumps
e-HMX	No Standby Pump
Name	
15HMX3 3600rpm	
Stages	
3	
Frequency	
60 Hz	
Acceptance Grade	
Manufacturer's Standard	
System Type	
Single Pump	
Operating Pumps	
1	

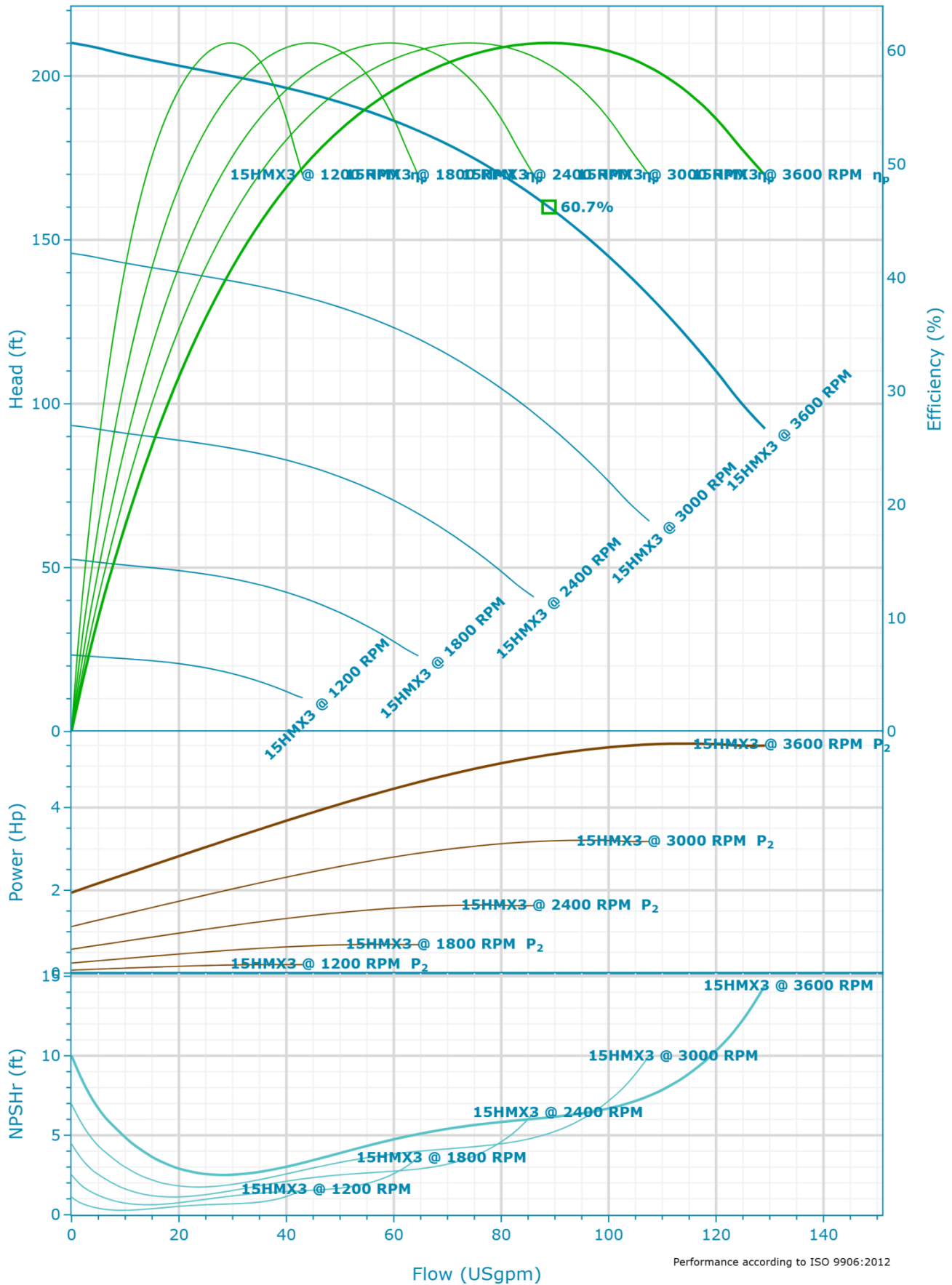
Fluid

Fluid Type	Density
Water	62.428 lb/ft ³
Fluid Temperature	Dynamic Viscosity
39.2 °F	1.567212 cP
Specific Gravity	Fluid Vapor Pressure
1	0.118 psi

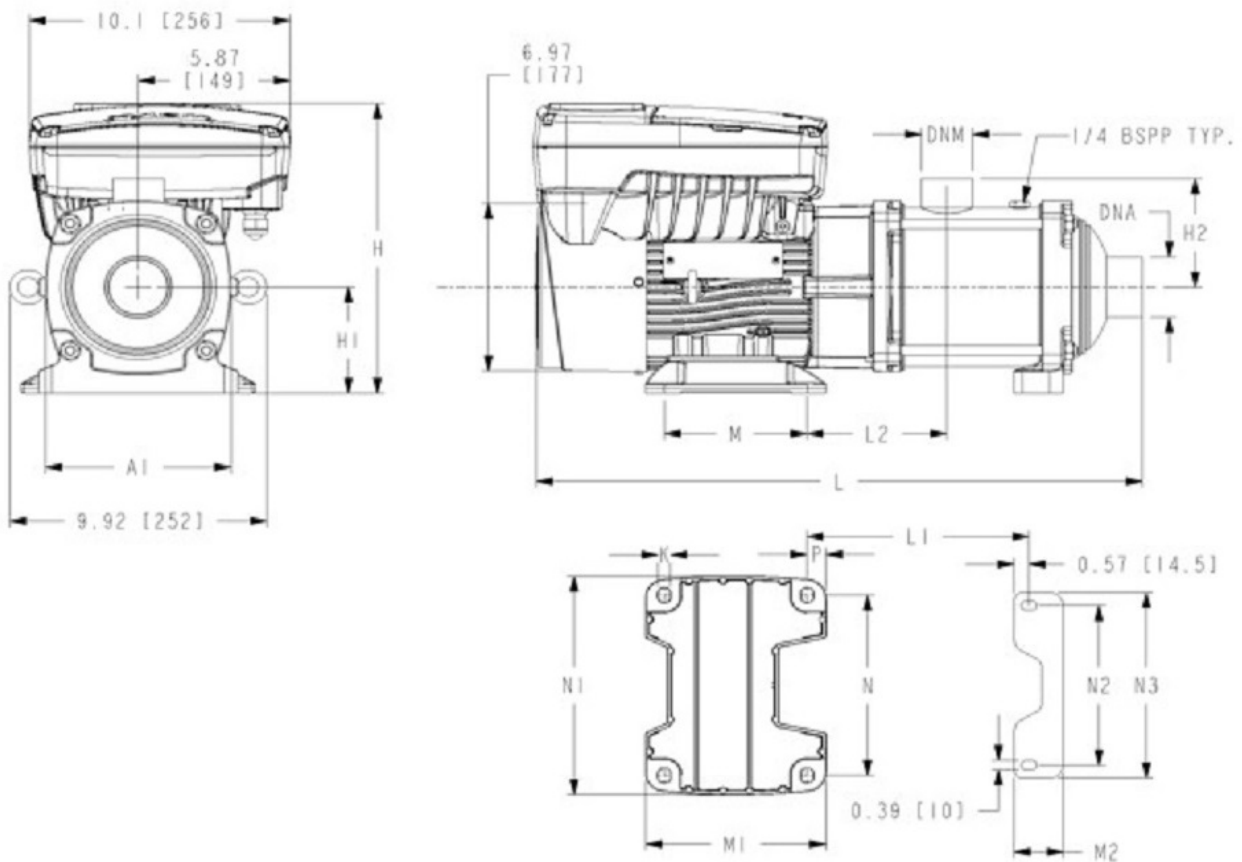
Design Curve

Rated Speed	BEP Flow
3,600 RPM	88.9 USgpm
Max Flow	BEP Head
129.1 USgpm	160.03 ft
H@QMin	Max Operating Pressure
210.1 ft	90.95 psi
H@QMax	Max P2
92.4 ft	5.54 Hp
BEP	
60.7 %	

15HMx03N40TM6BQE | Variable Speed Curve



15HMx03N40TM6BQE | Dimensional Data & Drawing



Dimensions

A 5.67 in	L 21.45 in	DN1 NPT 1.5 in	M1 6.81 in
A1 7.17 in	L1 6.4 in	H1 3.94 in	M2 1.89 in
H 11.57 in	L2 4.06 in	H2 4.49 in	N 6.3 in
K 0.47 in	DN2 NPT 2 in	M 5.51 in	N1 7.64 in
N2 6.61 in	Max. Working Pressure 235 psi		
N3 7.68 in			
P 0.67 in			
Total Weight 69 lb			

Company	PFC Equipment
Contact	Kelly Kresa
Phone No.	7633915856
Email	kkresa@pfcequip.com