



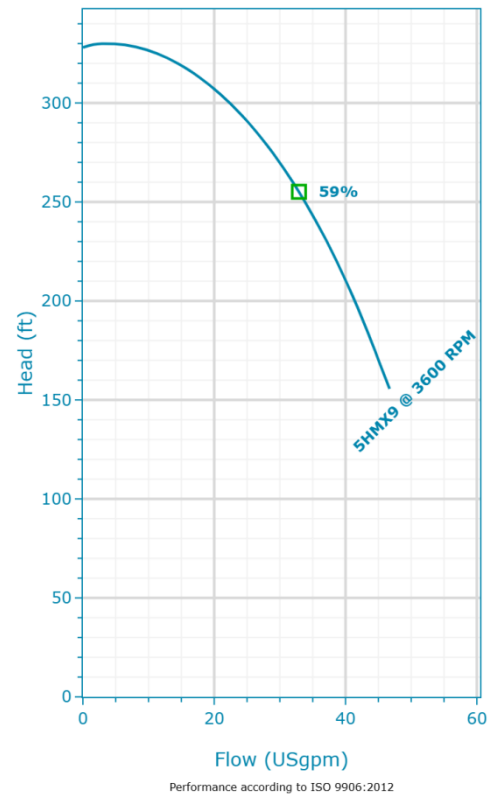
**5HMX09N30TM6BQE**

Created On: 8/7/25

## 5HMX09N30TM6BQE | Configuration Summary



Powered by Xylem's hydrovar® X Smart Motor, e-HMX Smart Pumps offer customizable pumping solutions designed to deliver ultra-premium efficiency, connectivity, and simplicity right out of the box. e-HMX Smart Pumps integrate decades of expertise and know-how in pumping solutions to bring the right combination of motors, variable speed drive and hydraulic pumps in one comprehensive, highly efficient package. It is a versatile horizontal multistage pump designed for best-in-class efficiency and superior durability to reduce the total cost of ownership. Customizable options mean you get exactly the right pump for your application, exactly when you need it.



### PUMP

**Pump Size**  
5HM

**Construction Design**  
Sleeve

### MATERIALS

**Construction**  
Stainless Steel (AISI 316)

### SEAL

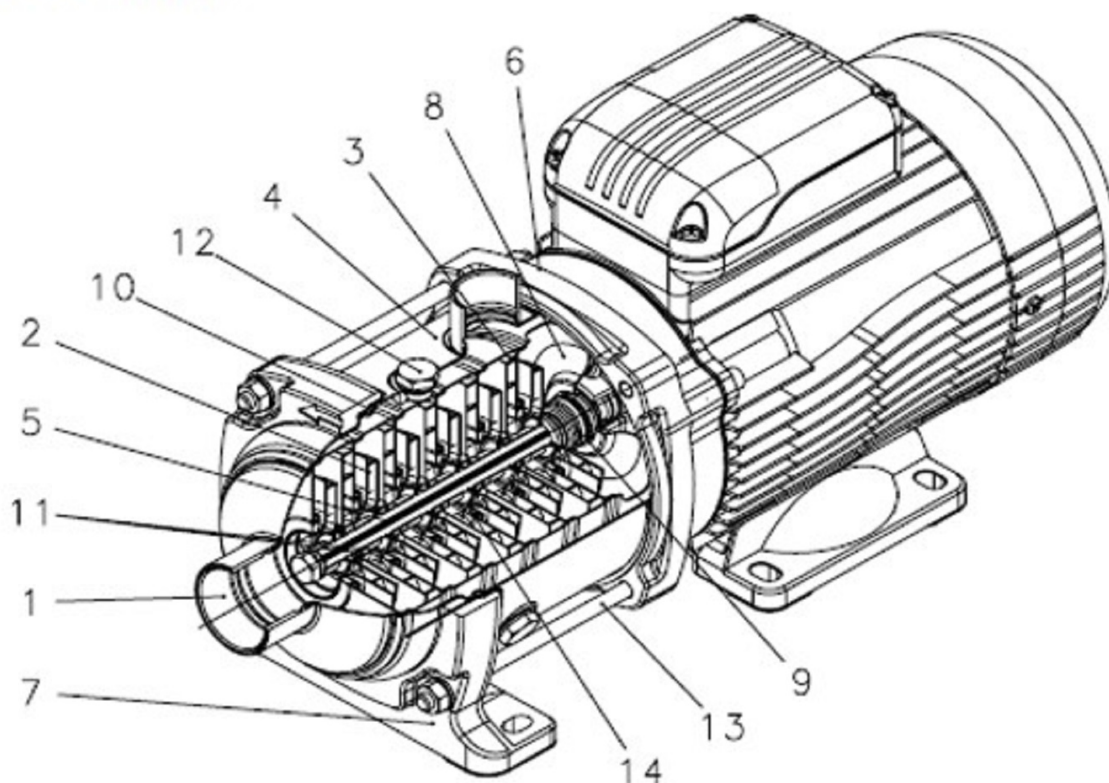
<b>Type of Seal</b>	<b>Rotating Face</b>
Mechanical Seals	Carbon
	<b>Stationary Face</b>
	Silicon Carbide
	<b>Elastomers</b>
	EPDM
	<b>Metal Components</b>
	316 SS

### MOTOR

<b>Frequency (Hz)</b>	<b>Power</b>
60	4 hp
<b>Poles</b>	<b>Phase (~)</b>
4	3
<b>Enclosure</b>	<b>Voltage</b>
TEFC	380-480 V
	<b>Frame Size</b>
	90

## 5HMX09N30TM6BQE | Product Details

### (SLEEVE DESIGN)



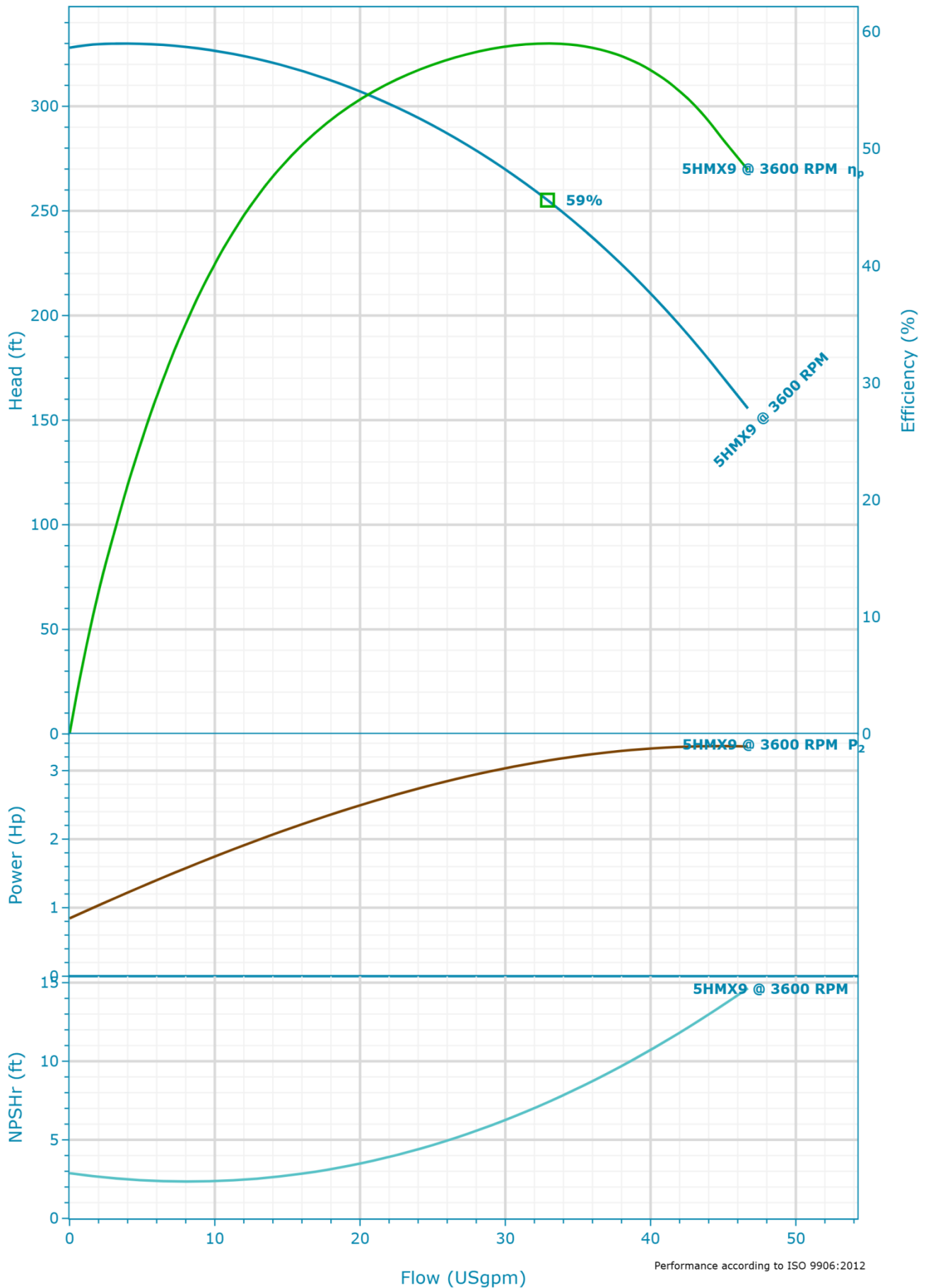
#### Construction Materials

<b>Head (1)</b> Stainless steel / AISI 316L	<b>Shaft (5)</b> Stainless steel / AISI 316	<b>Mechanical seal (9)</b> See Seal Section	<b>Tie rods (13)</b> Stainless steel / AISI 431
<b>Impeller (2)</b> Stainless steel / AISI 316L	<b>Adapter (6)</b> Aluminium	<b>Elastomers (10)</b> See Seal Section	<b>Wear ring (14)</b> Technopolymer (PPS)
<b>Diffuser and upper spacer (3)</b> Stainless steel / AISI 316L	<b>Ring with foot (7)</b> Aluminium	<b>Shaft sleeve and bushing (11)</b> Tungsten carbide	
<b>Outer sleeve (4)</b> Stainless steel / AISI 316L	<b>Seal housing (8)</b> Stainless steel / AISI 316L	<b>Fill / drain plugs (12)</b> Stainless steel / AISI 316L	

#### Motor

<b>Enclosure</b> TEFC	<b>Rated Voltage</b> 380-480 V	<b>Phase</b> 3	<b>SLA</b> 6.7-5.3
<b>Rated Power</b> 4 hp	<b>Frame Size</b> 90	<b>FLA</b> 6.7-5.3	<b>Service Factor</b> 1

## 5HMX09N30TM6BQE | Hydraulic Data & Performance Curve



### Selection

Series	Standby Pumps
e-HMX	No Standby Pump
Name	
5HMX9 3600rpm	
Stages	
9	
Frequency	
60 Hz	
Acceptance Grade	
Manufacturer's Standard	
System Type	
Single Pump	
Operating Pumps	
1	

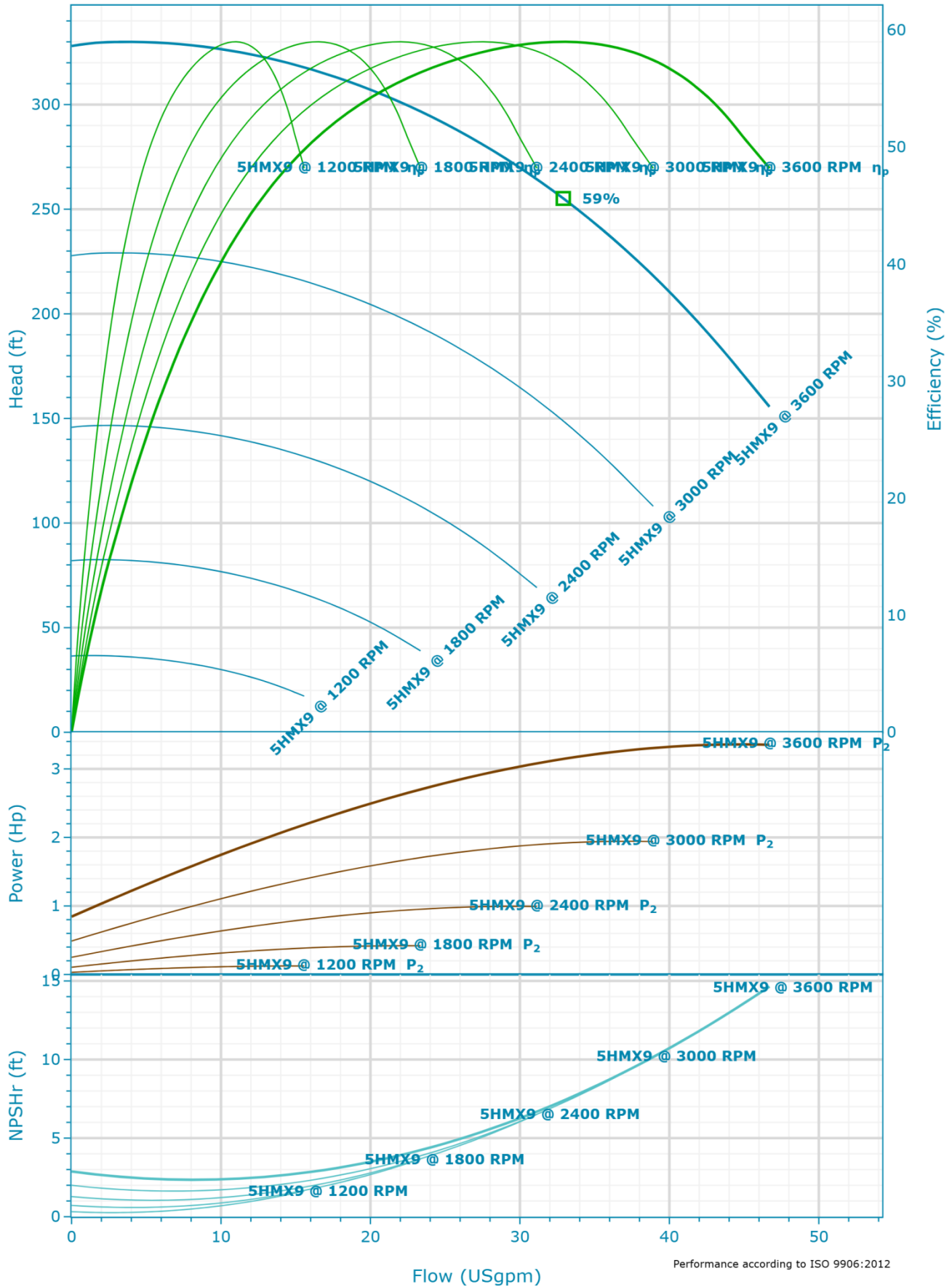
### Fluid

Fluid Type	Density
Water	62.428 lb/ft <sup>3</sup>
Fluid Temperature	Dynamic Viscosity
39.2 °F	1.567212 cP
Specific Gravity	Fluid Vapor Pressure
1	0.118 psi

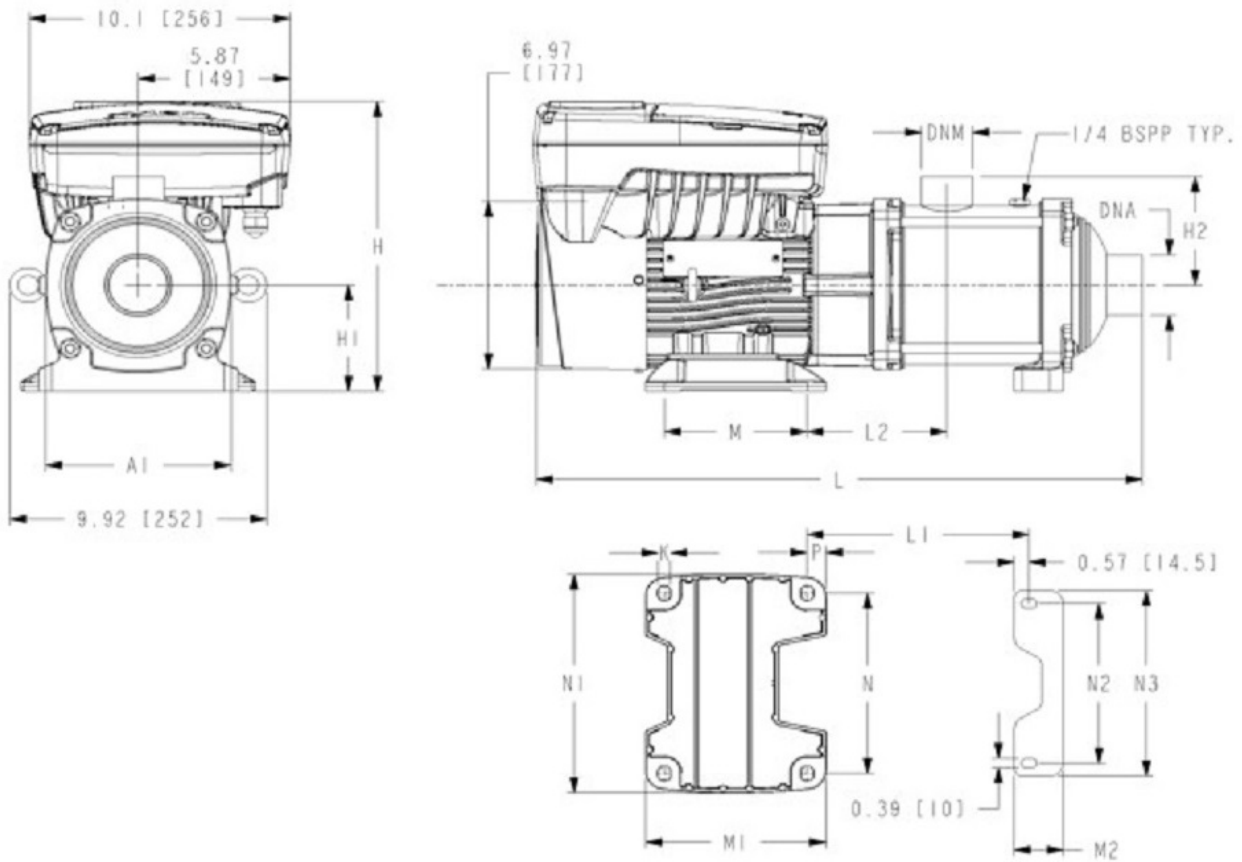
### Design Curve

Rated Speed	BEP Flow
3,600 RPM	32.9 USgpm
Max Flow	BEP Head
46.7 USgpm	255.14 ft
H@QMin	Max Operating Pressure
328 ft	142.84 psi
H@QMax	Max P2
155.6 ft	3.36 Hp
BEP	
59 %	

## 5HMX09N30TM6BQE | Variable Speed Curve



## 5HMX09N30TM6BQE | Dimensional Data & Drawing



### Dimensions

<b>A</b> 9.17 in	<b>L</b> 24.28 in	<b>DN1 NPT</b> 1 in	<b>M1</b> 6.14 in
<b>A1</b> 5.51 in	<b>L1</b> 9.85 in	<b>H1</b> 3.54 in	<b>M2</b> 1.77 in
<b>H</b> 11.18 in	<b>L2</b> 4.76 in	<b>H2</b> 3.7 in	<b>N</b> 5.51 in
<b>K</b> 0.39 in	<b>DNA NPT</b> 1.25 in	<b>M</b> 4.92 in	<b>N1</b> 6.85 in
<b>N2</b> 5.51 in	<b>Max. Working Pressure</b> 235 psi		
<b>N3</b> 6.5 in			
<b>P</b> 0.63 in			
<b>Total Weight</b> 65 lb			

Company	PFC Equipment
Contact	Kelly Kresa
Phone No.	7633915856
Email	kkresa@pfcequip.com