

Submittal Data

PROJECT:	UNIT TAG:	QUANTITY:
REPRESENTATIVE: _____	TYPE OF SERVICE:	DATE: _____
ENGINEER:	SUBMITTED BY:	DATE:
CONTRACTOR:	APPROVED BY:	DATE:
	ORDER NO.:	DATE:

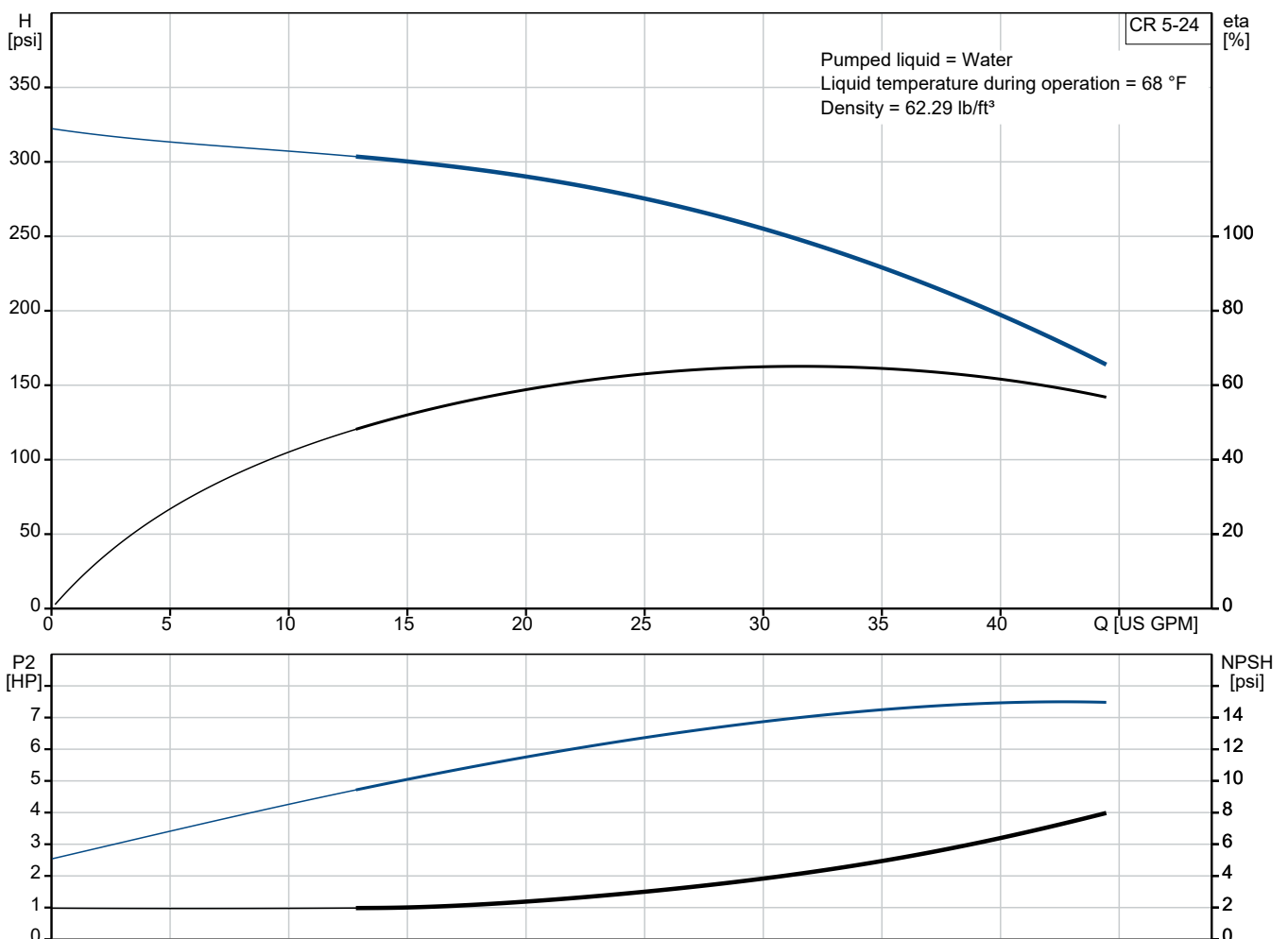


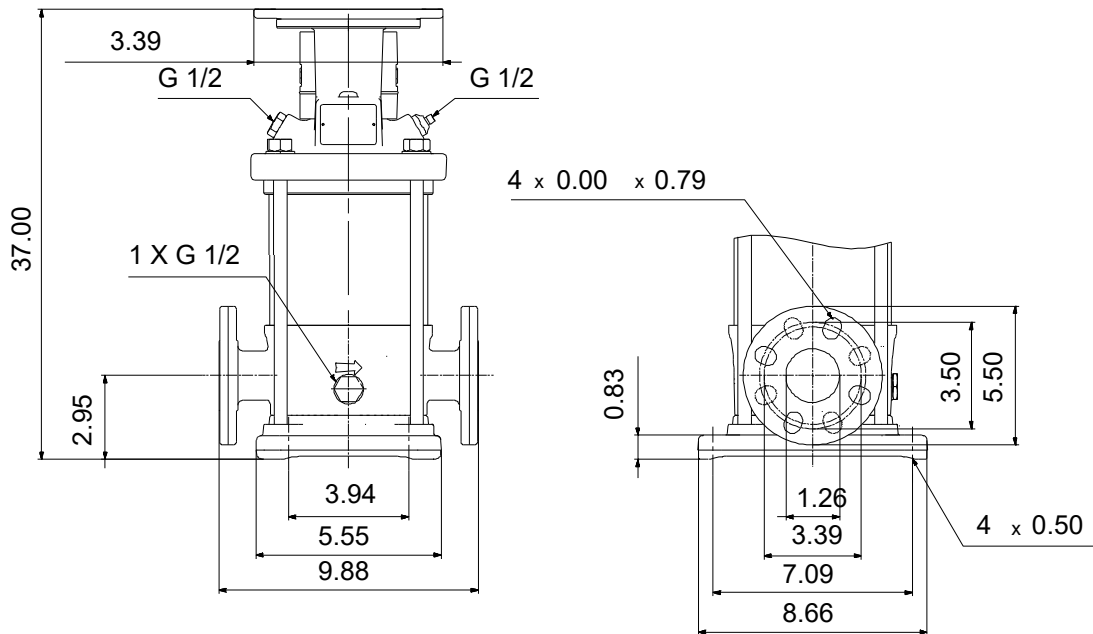
Note! Product picture may differ from actual product

CR 5-24 A-FGJ-A-E-HQQE

Vertical, multistage centrifugal pump with suction and discharge ports on the same level. The pump head and base are in cast iron - all other wetted parts are in stainless steel (EN 1.4301)

Conditions of Service		Pump Data		Motor Data	
Liquid:	Water	Max pressure at stated temp:	363 psi / 250 °F	Mains frequency:	60 Hz
Temperature:	68 °F	Liquid temperature range:	-4 .. 248 °F		
Specific Gravity:	1.000	Shaft seal:	HQQE		
		Product number:	96084249		





Materials:

Base: Cast iron
EN 1561 EN-GJL-200
ASTM A48-25B

Impeller: Stainless steel
AISI 304
EN 1.4301

Material code: A

Code for rubber: E

Qty. Description

1 CR 5-24 A-FGJ-A-E-HQQE



Note! Product picture may differ from actual product

Product No.: [96084249](#)

Pump without motor

Vertical, multistage centrifugal pump with inlet and outlet ports on same the level (inline). The pump head and base are in cast iron – all other wetted parts are in stainless steel. A cartridge shaft seal ensures high reliability, safe handling, and easy access and service. Power transmission is via a rigid split coupling. Pipe connection is via combined DIN-ANSI-JIS flanges.

Further product details

Steel, cast iron and aluminium components have an epoxy-based coating made in a cathodic electro-deposition (CED) process.

CED is a high-quality dip-painting process where an electrical field around the products ensures deposition of paint particles as a thin, well-controlled layer on the surface.

An integral part of the process is a pretreatment.

The entire process consists of these elements:

- 1) Alkaline-based cleaning.
- 2) Zinc phosphating.
- 3) Cathodic electro-deposition.
- 4) Curing to a dry film thickness 18-22 my m.

The colour code for the finished product is NCS 9000/RAL 9005.

Pump

The pump head, pump head cover and flange for motor mounting is made in one piece. The pump head has a combined 1/2" priming plug and vent screw.



The pump is fitted with a balanced O-ring seal unit with a rigid torque-transmission system.

This seal type is assembled in a cartridge unit which makes replacement safe and easy.

Due to the balancing, this seal type is suitable for high-pressure applications.

The cartridge construction also protects the pump shaft from possible wear from a dynamic O-ring between pump shaft and shaft seal.

Seal faces:

- Rotating seal ring material: silicon carbide (SiC)
- Stationary seat material: silicon carbide (SiC)

This material pairing is used where higher corrosion resistance is required. The high hardness of this material pairing offers good resistance against abrasive particles.

Secondary seal material: EPDM (ethylene-propylene rubber)

EPDM has excellent resistance to hot water. EPDM is not suitable for mineral oils.

Qty.	Description
------	-------------

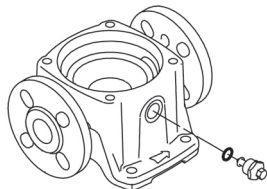
1	 <p>The shaft seal is screwed into the pump head.</p> <p>The chambers and impellers are made of stainless-steel sheet. The chambers are provided with a PTFE neck ring offering improved sealing and high efficiency. The impellers have smooth surfaces, and the shape of the blades ensure a high efficiency.</p> <p>The base is made of cast iron. The flanges and base are cast in one piece. The outlet side of the base has a combined drain plug and bypass valve. The pump is secured to the foundation by four bolts through the base plate.</p>  <p>Motor The pump is sold without motor.</p> <p>Technical data</p> <p>Liquid:</p> <table> <tr> <td>Pumped liquid:</td> <td>Water</td> </tr> <tr> <td>Liquid temperature range:</td> <td>-4 .. 248 °F</td> </tr> <tr> <td>Selected liquid temperature:</td> <td>68 °F</td> </tr> <tr> <td>Density:</td> <td>62.29 lb/ft³</td> </tr> </table> <p>Technical:</p> <table> <tr> <td>Pump speed on which pump data are based:</td> <td>3467 rpm</td> </tr> <tr> <td>Rated flow:</td> <td>30.4 US GPM</td> </tr> <tr> <td>Rated head:</td> <td>250.2 psi</td> </tr> <tr> <td>Actual impeller diameter:</td> <td>2.88 in</td> </tr> <tr> <td>Pump orientation:</td> <td>Vertical</td> </tr> <tr> <td>Shaft seal arrangement:</td> <td>Single</td> </tr> <tr> <td>Primary shaft seal:</td> <td>HQQE</td> </tr> <tr> <td>Code for shaft seal:</td> <td>HQQE</td> </tr> <tr> <td>Approvals:</td> <td>CE</td> </tr> <tr> <td>Approvals for drinking water:</td> <td>NSF/ANSI 61</td> </tr> <tr> <td>Curve tolerance:</td> <td>ISO9906:2012 3B</td> </tr> </table> <p>Materials:</p> <table> <tr> <td>Base:</td> <td>Cast iron</td> </tr> <tr> <td></td> <td>EN 1561 EN-GJL-200</td> </tr> <tr> <td></td> <td>ASTM A48-25B</td> </tr> <tr> <td>Impeller:</td> <td>Stainless steel</td> </tr> <tr> <td></td> <td>EN 1.4301</td> </tr> <tr> <td></td> <td>AISI 304</td> </tr> <tr> <td>Bearing:</td> <td>SIC</td> </tr> <tr> <td>Installation:</td> <td></td> </tr> </table>	Pumped liquid:	Water	Liquid temperature range:	-4 .. 248 °F	Selected liquid temperature:	68 °F	Density:	62.29 lb/ft³	Pump speed on which pump data are based:	3467 rpm	Rated flow:	30.4 US GPM	Rated head:	250.2 psi	Actual impeller diameter:	2.88 in	Pump orientation:	Vertical	Shaft seal arrangement:	Single	Primary shaft seal:	HQQE	Code for shaft seal:	HQQE	Approvals:	CE	Approvals for drinking water:	NSF/ANSI 61	Curve tolerance:	ISO9906:2012 3B	Base:	Cast iron		EN 1561 EN-GJL-200		ASTM A48-25B	Impeller:	Stainless steel		EN 1.4301		AISI 304	Bearing:	SIC	Installation:	
Pumped liquid:	Water																																														
Liquid temperature range:	-4 .. 248 °F																																														
Selected liquid temperature:	68 °F																																														
Density:	62.29 lb/ft³																																														
Pump speed on which pump data are based:	3467 rpm																																														
Rated flow:	30.4 US GPM																																														
Rated head:	250.2 psi																																														
Actual impeller diameter:	2.88 in																																														
Pump orientation:	Vertical																																														
Shaft seal arrangement:	Single																																														
Primary shaft seal:	HQQE																																														
Code for shaft seal:	HQQE																																														
Approvals:	CE																																														
Approvals for drinking water:	NSF/ANSI 61																																														
Curve tolerance:	ISO9906:2012 3B																																														
Base:	Cast iron																																														
	EN 1561 EN-GJL-200																																														
	ASTM A48-25B																																														
Impeller:	Stainless steel																																														
	EN 1.4301																																														
	AISI 304																																														
Bearing:	SIC																																														
Installation:																																															



The shaft seal is screwed into the pump head.

The chambers and impellers are made of stainless-steel sheet. The chambers are provided with a PTFE neck ring offering improved sealing and high efficiency. The impellers have smooth surfaces, and the shape of the blades ensure a high efficiency.

The base is made of cast iron. The flanges and base are cast in one piece. The outlet side of the base has a combined drain plug and bypass valve. The pump is secured to the foundation by four bolts through the base plate.



Motor

The pump is sold without motor.

Technical data

Liquid:

Pumped liquid:	Water
Liquid temperature range:	-4 .. 248 °F
Selected liquid temperature:	68 °F
Density:	62.29 lb/ft³

Technical:

Pump speed on which pump data are based:	3467 rpm
Rated flow:	30.4 US GPM
Rated head:	250.2 psi
Actual impeller diameter:	2.88 in
Pump orientation:	Vertical
Shaft seal arrangement:	Single
Primary shaft seal:	HQQE
Code for shaft seal:	HQQE
Approvals:	CE
Approvals for drinking water:	NSF/ANSI 61
Curve tolerance:	ISO9906:2012 3B

Materials:

Base:	Cast iron
	EN 1561 EN-GJL-200
	ASTM A48-25B
Impeller:	Stainless steel
	EN 1.4301
	AISI 304
Bearing:	SIC
Installation:	



Company name:

Created by:

Phone:

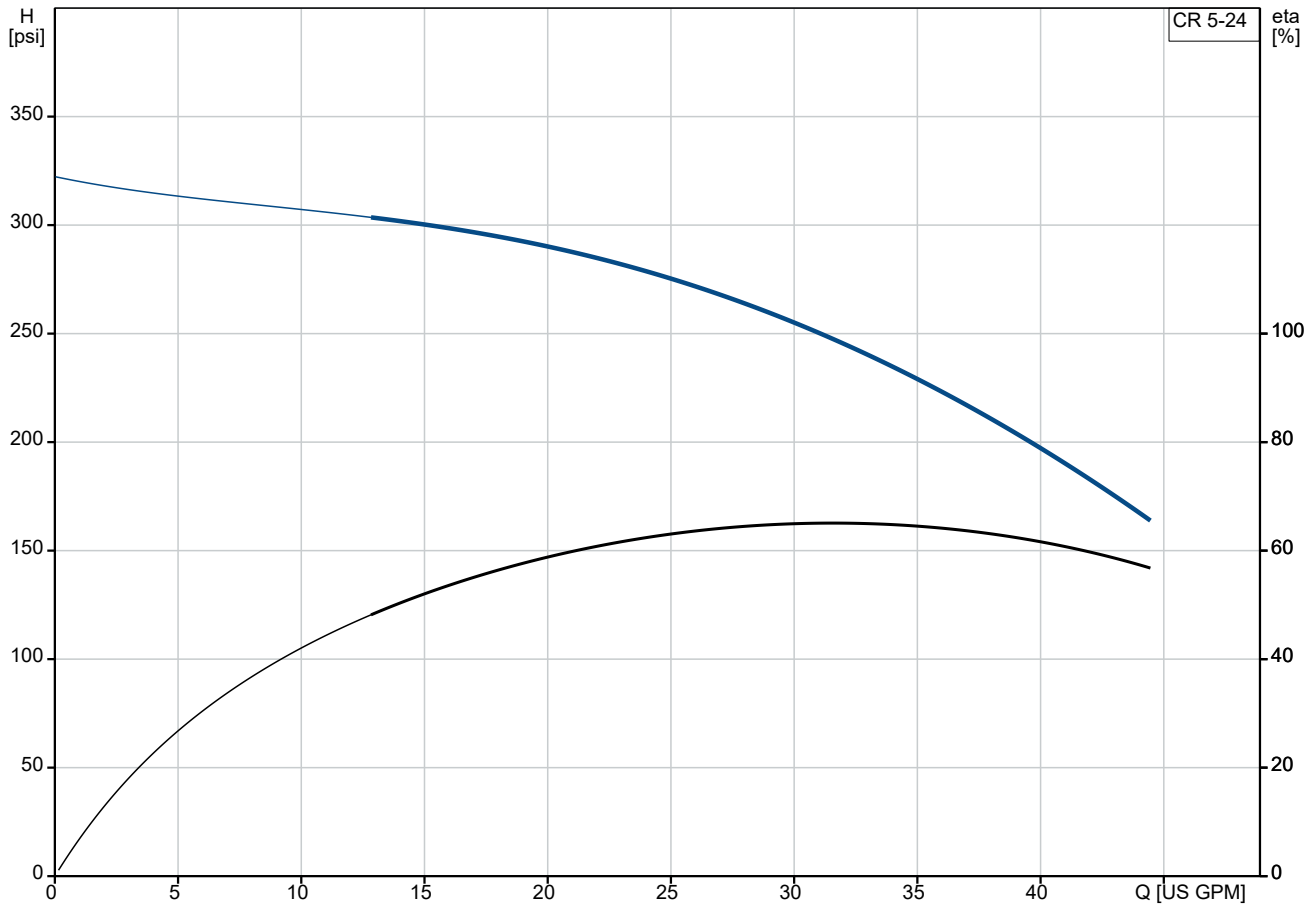
Date:

01/10/2025

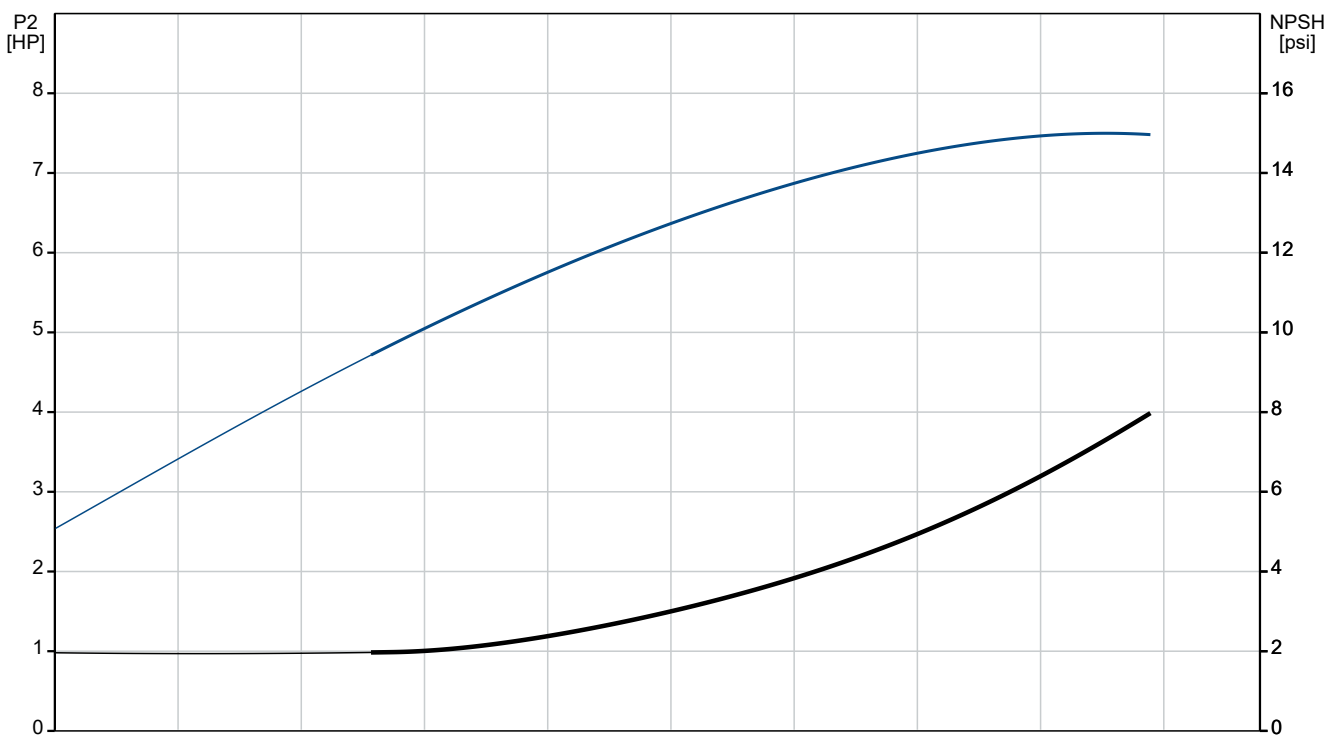
Qty.	Description
------	-------------

1	Maximum operating pressure: 362.59 psi Max pressure at stated temp: 363 psi / 250 °F 363 psi / -4 °F Type of connection: DIN / ANSI / JIS Size of inlet connection: DN 25/32 1 1/4 inch Size of outlet connection: DN 25/32 1 1/4 inch Pressure rating for connection: PN 25 Flange rating inlet: 250 lb Flange size for motor: 213TC Electrical data: Motor standard: NEMA Power (P2) required by pump: 7.5 HP Controls: Frequency converter: None Others: DOE Pump Energy Index CL: 0.89 Net weight: 78.3 lb Gross weight: 190 lb Shipping volume: 8.26 ft³ Country of origin: US Custom tariff no.: 8413.70.2040
---	---

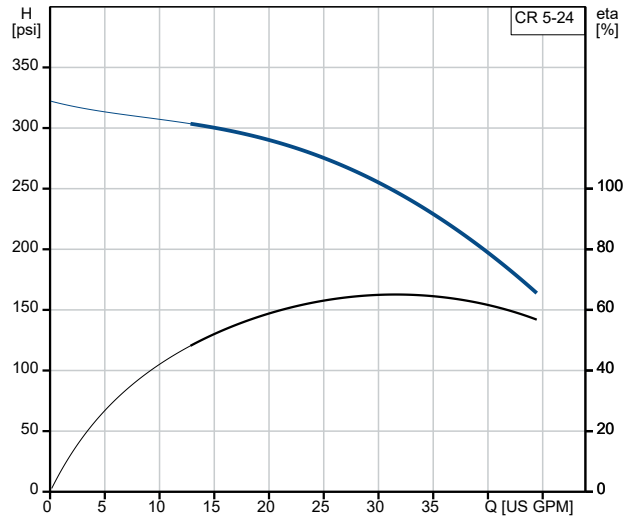
96084249 CR 5-24 A-FGJ-A-E-HQQE 60 Hz



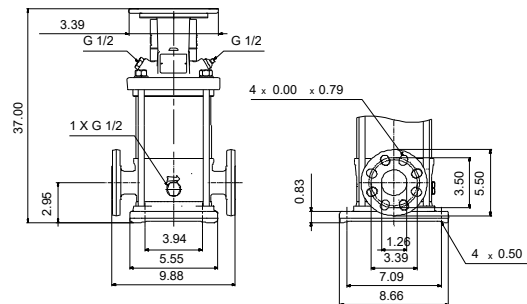
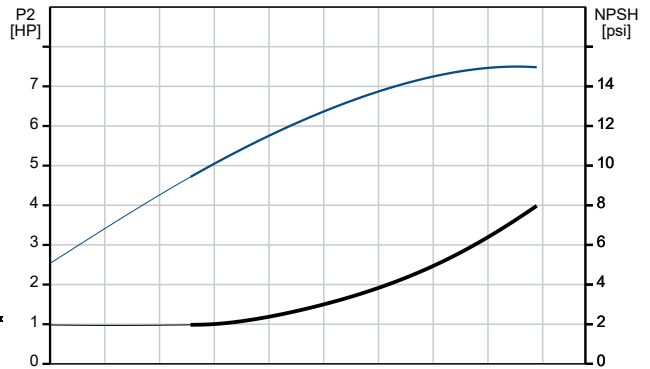
Pumped liquid = Water
 Liquid temperature during operation = 68 °F
 Density = 62.29 lb/ft³



Description	Value
General information:	
Product name:	CR 5-24 A-FGJ-A-E-HQQE
Product No:	96084249
EAN number:	5700395190878
Technical:	
Pump speed on which pump data are based:	3467 rpm
Rated flow:	30.4 US GPM
Rated head:	250.2 psi
Maximum head:	337.5 psi
Actual impeller diameter:	2.88 in
Stages:	24
Impellers:	24
Number of reduced-diameter impellers:	0
Low NPSH:	N
Pump orientation:	Vertical
Shaft seal arrangement:	Single
Primary shaft seal:	HQQE
Code for shaft seal:	HQQE
Approvals:	CE
Approvals for drinking water:	NSF/ANSI 61
Curve tolerance:	ISO9906:2012 3B
Pump version:	A
Model:	A
Materials:	
Base:	Cast iron EN 1561 EN-GJL-200 ASTM A48-25B
Impeller:	Stainless steel EN 1.4301 AISI 304
Material code:	A
Code for rubber:	E
Bearing:	SIC
Installation:	
Maximum operating pressure:	362.59 psi
Max pressure at stated temp:	363 psi / 250 °F 363 psi / -4 °F
Type of connection:	DIN / ANSI / JIS
Size of inlet connection:	DN 25/32 1 1/4 inch
Size of outlet connection:	DN 25/32 1 1/4 inch
Pressure rating for connection:	PN 25
Flange rating inlet:	250 lb
Flange size for motor:	213TC
Connect code:	FGJ
Liquid:	
Pumped liquid:	Water
Liquid temperature range:	-4 .. 248 °F
Selected liquid temperature:	68 °F
Density:	62.29 lb/ft³
Electrical data:	
Motor standard:	NEMA
Power (P2) required by pump:	7.5 HP
Controls:	
Frequency converter:	None



Pumped liquid = Water
Liquid temperature during operation = 68 °F
Density = 62.29 lb/ft³





Company name:

Created by:

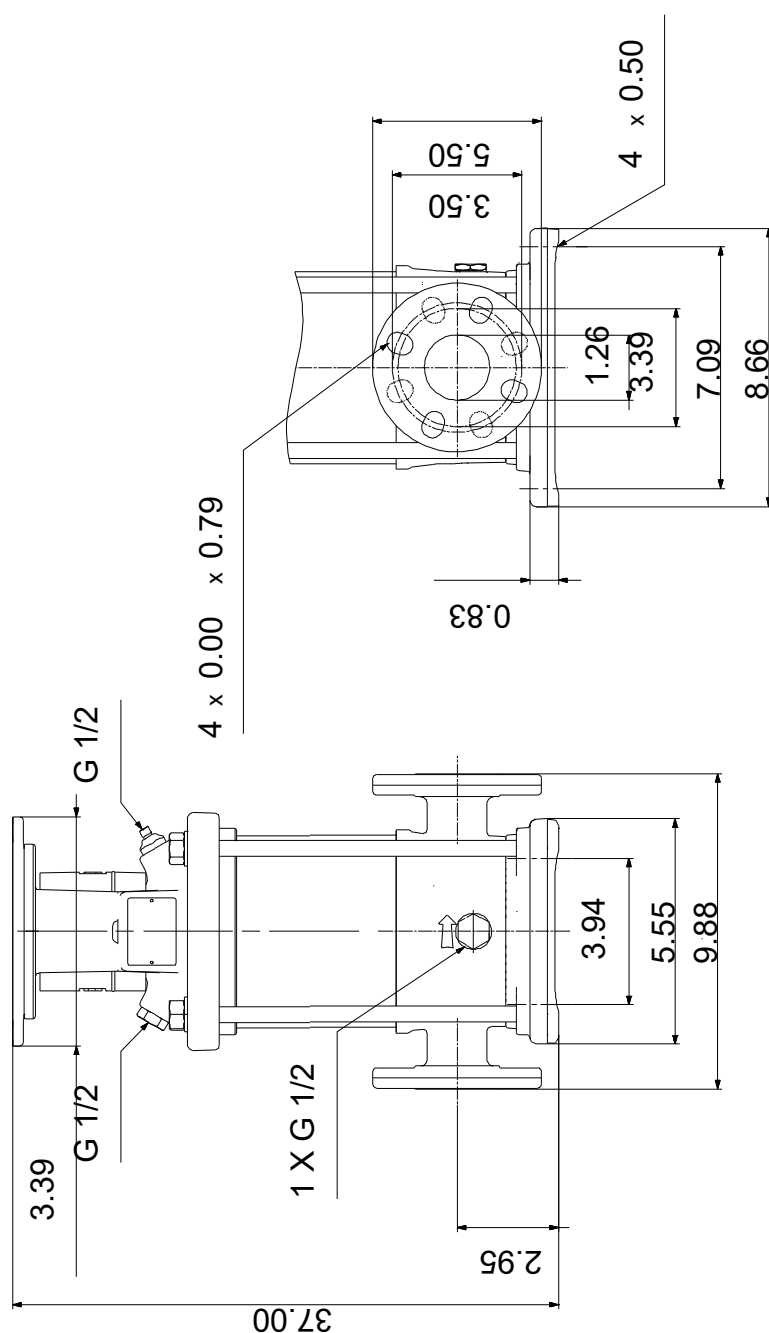
Phone:

Date:

01/10/2025

Description	Value
Others:	
DOE Pump Energy Index CL:	0.89
Net weight:	78.3 lb
Gross weight:	190 lb
Shipping volume:	8.26 ft ³
Country of origin:	US
Custom tariff no.:	8413.70.2040

96084249 CR 5-24 A-FGJ-A-E-HQQE 60 Hz



Note! All units are in [in] unless others are stated.

Disclaimer: This simplified dimensional drawing does not show all details.