

Company:
Name:
Date: 12/10/2025



Pump:
Size: 1.5x2-8A
Type: CC1 Stainless
Synch Speed: 3600 rpm
Dia: 6 in
Curve: SPTL_CCFM136SS152
Impeller: CC-IMPELLER-15-316S

Dimensions:
Suction: 2 in
Discharge: 1.5 in

Fluid:
Name: Water
SG: 1
Density: 62.4 lb/ft³
Viscosity: 1.1 cP
Temperature: 60 °F

Vapor Pressure: 0.256 psi a
Atm Pressure: 14.7 psi a
Margin Ratio: 1

Search Criteria:
Flow: --- Near Miss: ---
Head: --- Static Head: 0 ft

Pump Limits:
Temperature: --- Sphere Size: 0.31 in
Wkg Pressure: ---

Motor:
Standard: NEMA
Enclosure: TEFC
Frame: 215T
Sizing Criteria: Max Power on Design Curve

Size: 10 hp
Speed: 3600 rpm

Pump Selection Warnings:
None

--- Duty Point ---

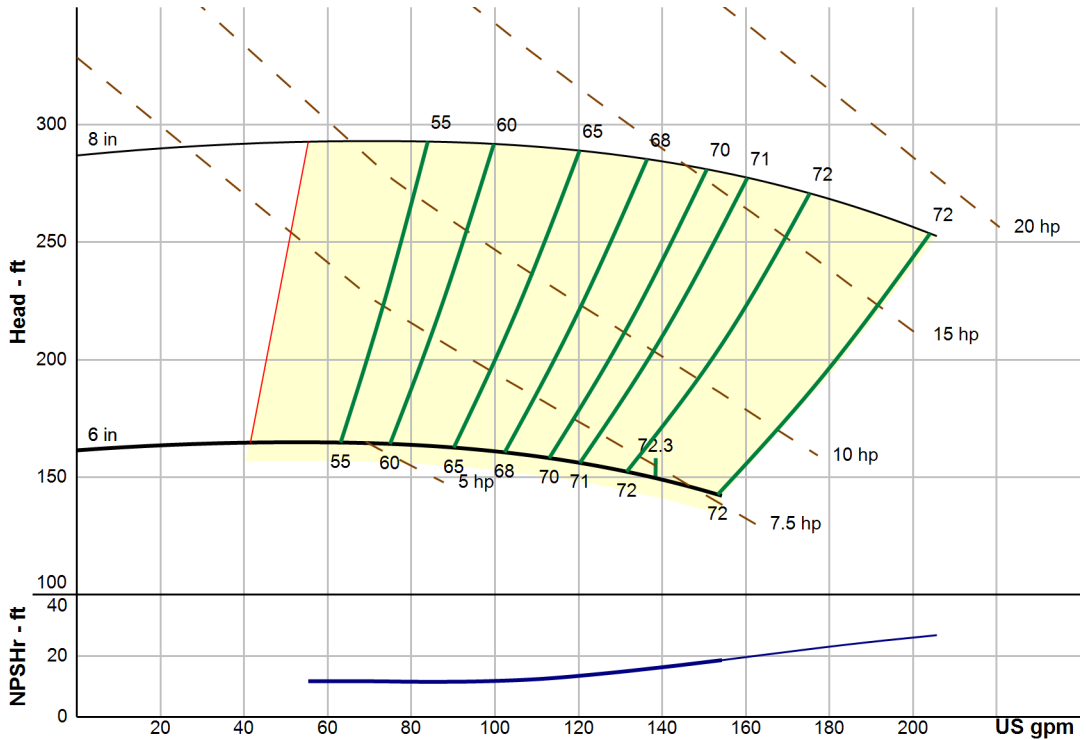
Flow: 138 US gpm
Head: 150 ft
Eff: 72.3%
Power: 7.24 hp
NPSHr: 16 ft
Speed: 3600 rpm

--- Design Curve ---

Shutoff Head: 161 ft
Shutoff dP: 69.9 psi
Min Flow: 41.5 US gpm
BEP: 72.3% @ 138 US gpm
NOL Power:
7.69 hp @ 154 US gpm

--- Max Curve ---

Max Power:
18.2 hp @ 206 US gpm



NPT Connections. Motor frame size range: 143-215JM

Performance Evaluation:

Flow US gpm	Speed rpm	Head ft	Efficiency %	Power hp	NPSHr ft
148	3600	145	72.1	7.51	17.5
123	3600	155	71.3	6.76	13.9
98.4	3600	161	67.1	5.97	11.8
73.8	3600	164	59.4	5.14	11.7
49.2	3600	164	48.3	4.29	11.7