

Company:  
Name:  
Date: 12/10/2025



**Pump:**  
Size: 1.5x2-8A  
Type: CC1 Stainless  
Synch Speed: 1800 rpm  
Dia: 6 in  
Curve: SPTL\_CCFM118SS152  
Impeller: CC-IMPELLER-15-316S

**Dimensions:**  
Suction: 2 in  
Discharge: 1.5 in

**Fluid:**  
Name: Water  
SG: 1  
Density: 62.4 lb/ft<sup>3</sup>  
Viscosity: 1.1 cP  
Temperature: 60 °F  
Vapor Pressure: 0.256 psi a  
Atm Pressure: 14.7 psi a  
Margin Ratio: 1

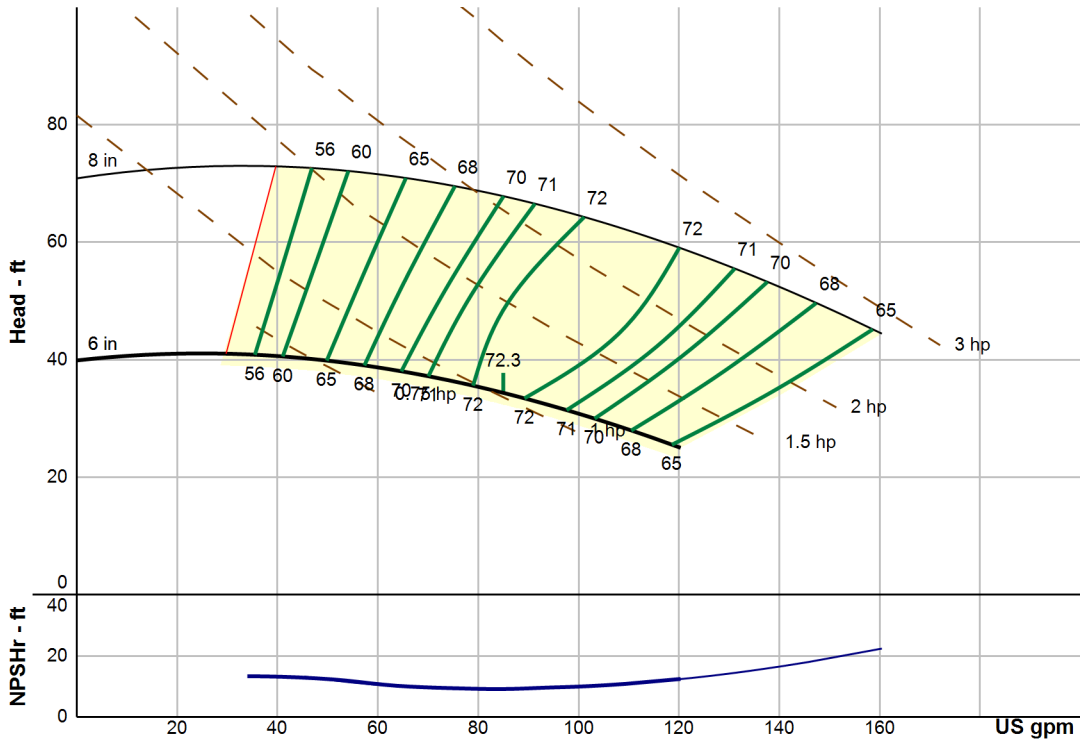
**Search Criteria:**  
Flow: --- Near Miss: ---  
Head: --- Static Head: 0 ft

**Pump Limits:**  
Temperature: --- Sphere Size: 0.31 in  
Wkg Pressure: ---

**Motor:**  
Standard: NEMA Size: 1.5 hp  
Enclosure: TEFC Speed: 1800 rpm  
Frame: 145T  
Sizing Criteria: Max Power on Design Curve

**Pump Selection Warnings:**  
None

--- Duty Point ---	
Flow:	85 US gpm
Head:	34.4 ft
Eff:	72.3%
Power:	1.02 hp
NPSHr:	9.15 ft
Speed:	1800 rpm
--- Design Curve ---	
Shutoff Head:	39.9 ft
Shutoff dP:	17.3 psi
Min Flow:	29.7 US gpm
BEP:	72.3% @ 85 US gpm
NOL Power:	1.18 hp @ 120 US gpm
--- Max Curve ---	
Max Power:	2.79 hp @ 160 US gpm



NPT Connections. Motor frame size range: 143-215JM

**Performance Evaluation:**

Flow	Speed	Head	Efficiency	Power	NPSHr
US gpm	rpm	ft	%	hp	ft
116	1800	26.3	65.8	1.16	11.8
96.3	1800	31.7	71.1	1.08	9.78
77	1800	36	71.8	0.974	9.37
57.8	1800	38.9	67.8	0.834	11.2
38.5	1800	40.6	57.7	0.677	13.2