



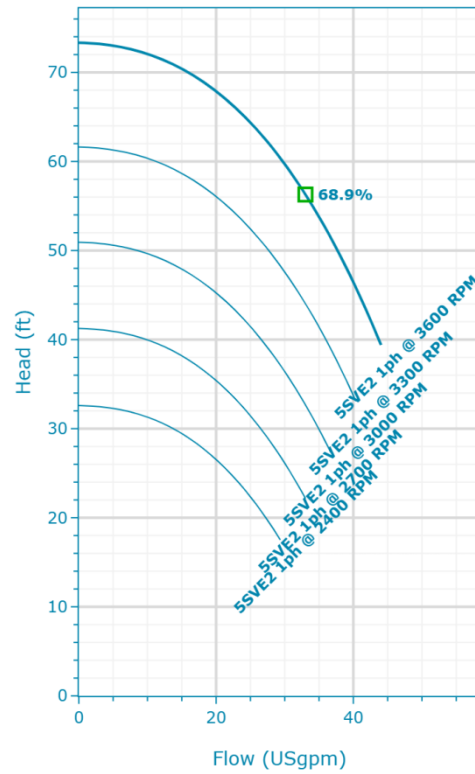
**5SVE2GB3LM0**

Created On: 1/5/26

## 5SVE2GB3LM0 | Configuration Summary



e-SVE series is equipped with an intelligent control that optimizes hydraulic performance while minimizing waste. It is a pre-programmed package combining the e-SV multi-stage pump with a Xylem Smart Motor – an “ultra-premium” level IES permanent magnet motor with a wide range of monitoring, control and safety features.



Performance according to ISO 9906:2012

### PUMP

**Installation**  
Complete Pump

### MATERIALS

|  |  |
|--|--|
| <b>Pump Body Material</b><br>Cast Iron (ASTM Class 35/40B) | <b>Impeller Material</b><br>Stainless Steel (AISI 304) |
|--|--|

### SEAL

|   |   |
|---|---|
| <b>Type of Seal</b><br>Mechanical Seals | <b>Rotating Face</b><br>Carbon                            |
|   | <b>Stationary Face</b><br>Silicon Carbide Graphite Filled |
|   | <b>Elastomers</b><br>Viton                                |
|   | <b>Spring</b><br>316 SS                                   |
|   | <b>Metal Component</b><br>316 SS                          |

### STANDARD OPTIONS

**Special Configuration**  
Please Select

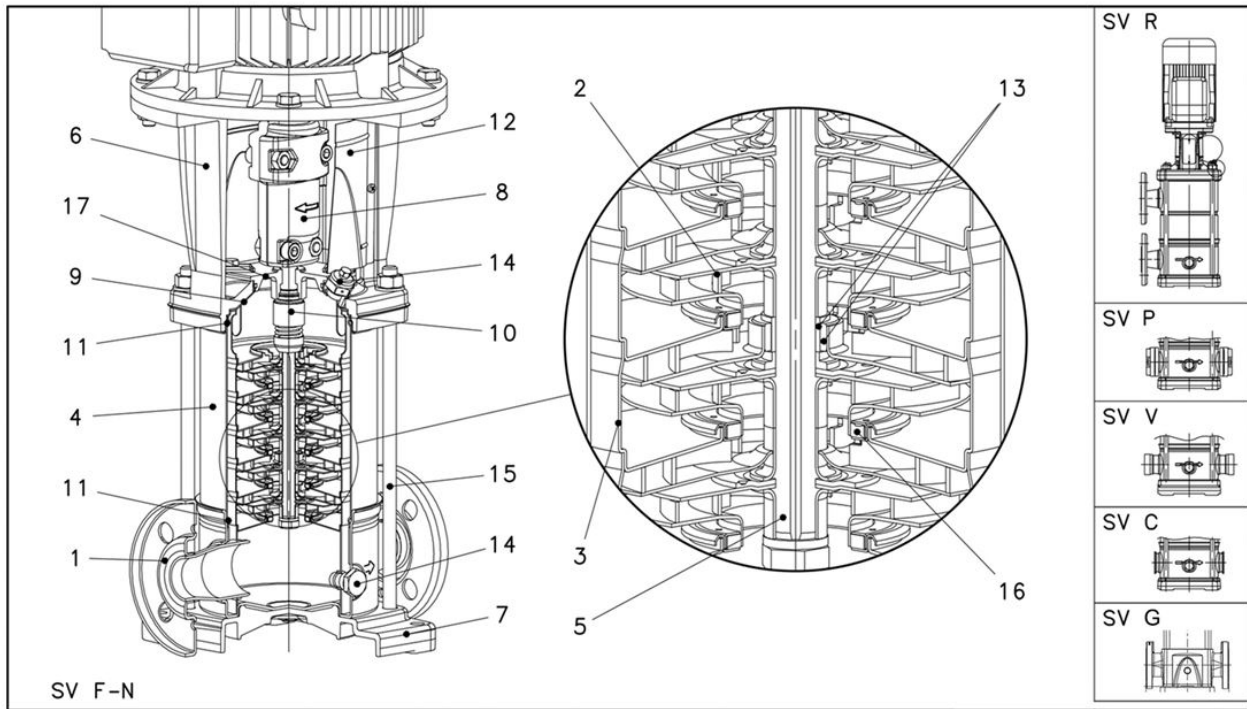
### MOTOR

|                          |                             |
|--------------------------|-----------------------------|
| <b>Poles</b><br>2        | <b>Power</b><br>0.75 hp     |
| <b>Enclosure</b><br>TEFC | <b>Phase (~)</b><br>1       |
|                          | <b>Voltage</b><br>208-240 V |

### FLANGE

**Flange**  
[G] = Round Flanges (AISI 304/Cast Iron)

**5SVE2GB3LM0** | Product Details



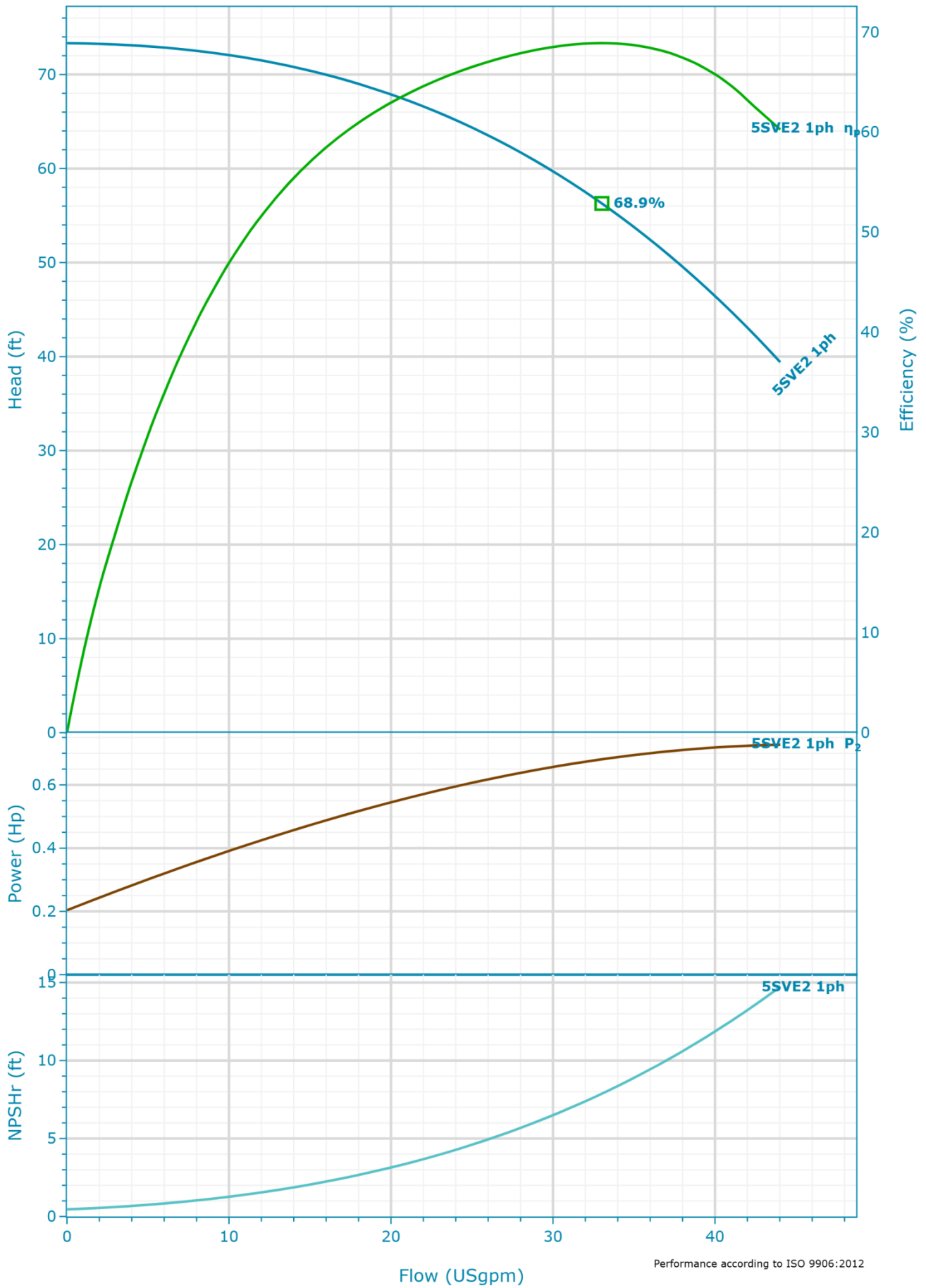
**Construction Materials**

|   |   |  |  |
|---|---|--|--|
| <b>Pump Body (1)</b><br>Cast Iron (ASTM Class 35/40B) | <b>Shaft (5)</b><br>Stainless Steel (AISI 316)      | <b>Seal Plate (9)</b><br>Stainless Steel (AISI 316L)     | <b>Fill/Drain Plugs (14)</b><br>Stainless Steel (AISI 316)       |
| <b>Impeller (2)</b><br>Stainless Steel (AISI 304)     | <b>Adapter (6)</b><br>Cast Iron (ASTM Class 35/40B) | <b>Elastomers (11)</b><br>Refer Mechanical Seals         | <b>Tie Rods (15)</b><br>Carbon Steel / Zinc Plated (A29 Gr.1045) |
| <b>Diffuser (3)</b><br>Stainless Steel (AISI 304)     | <b>Base (7)</b><br>N/A                              | <b>Coupling Guard (12)</b><br>Stainless Steel (AISI 304) | <b>Wear Ring (16)</b><br>PPS                                     |
| <b>Casing (4)</b><br>Stainless Steel (AISI 316L)      | <b>Coupling (8)</b><br>Aluminum (A384.0-F)          | <b>Shaft Sleeve and Bushing (13)</b><br>Tungsten Carbide | <b>Seal Gland (17)</b><br>Stainless Steel (AISI 316)             |

**Motor**

|                            |                                   |                         |                         |
|----------------------------|-----------------------------------|-------------------------|-------------------------|
| <b>Enclosure</b><br>TEFC   | <b>Rated Power</b><br>0.75 Hp     | <b>Phase</b><br>1       | <b>SLA</b><br>3.27-2.85 |
| <b>Speed</b><br>3600.0 rpm | <b>Rated Voltage</b><br>208-240 V | <b>FLA</b><br>3.27-2.85 |                         |

### 5SVE2GB3LM0 | Hydraulic Data & Performance Curve



**Selection**

Series Standby Pumps  
e-SVE No Standby Pump

Name  
5SVE2 1ph 3600rpm

Stages  
2

Frequency  
60 Hz

Acceptance Grade  
Manufacturer's Standard

System Type  
Single Pump

Operating Pumps  
1

**Fluid and Operating Conditions**

Fluid Type Density  
Water 62.43 lb/ft<sup>3</sup>

Fluid Temperature Dynamic Viscosity  
39.2 °F 1.57 cP

Specific Gravity Fluid Vapor Pressure  
1 0.12 psi

Atmospheric Pressure  
14.7 psi

Elevation  
0 ft

Ambient Temperature  
68 °F

NPSH Available  
33.68 ft

Submergence  
0 ft

**Design Curve**

Rated Speed BEP Flow  
3,600 RPM 33.02 USgpm

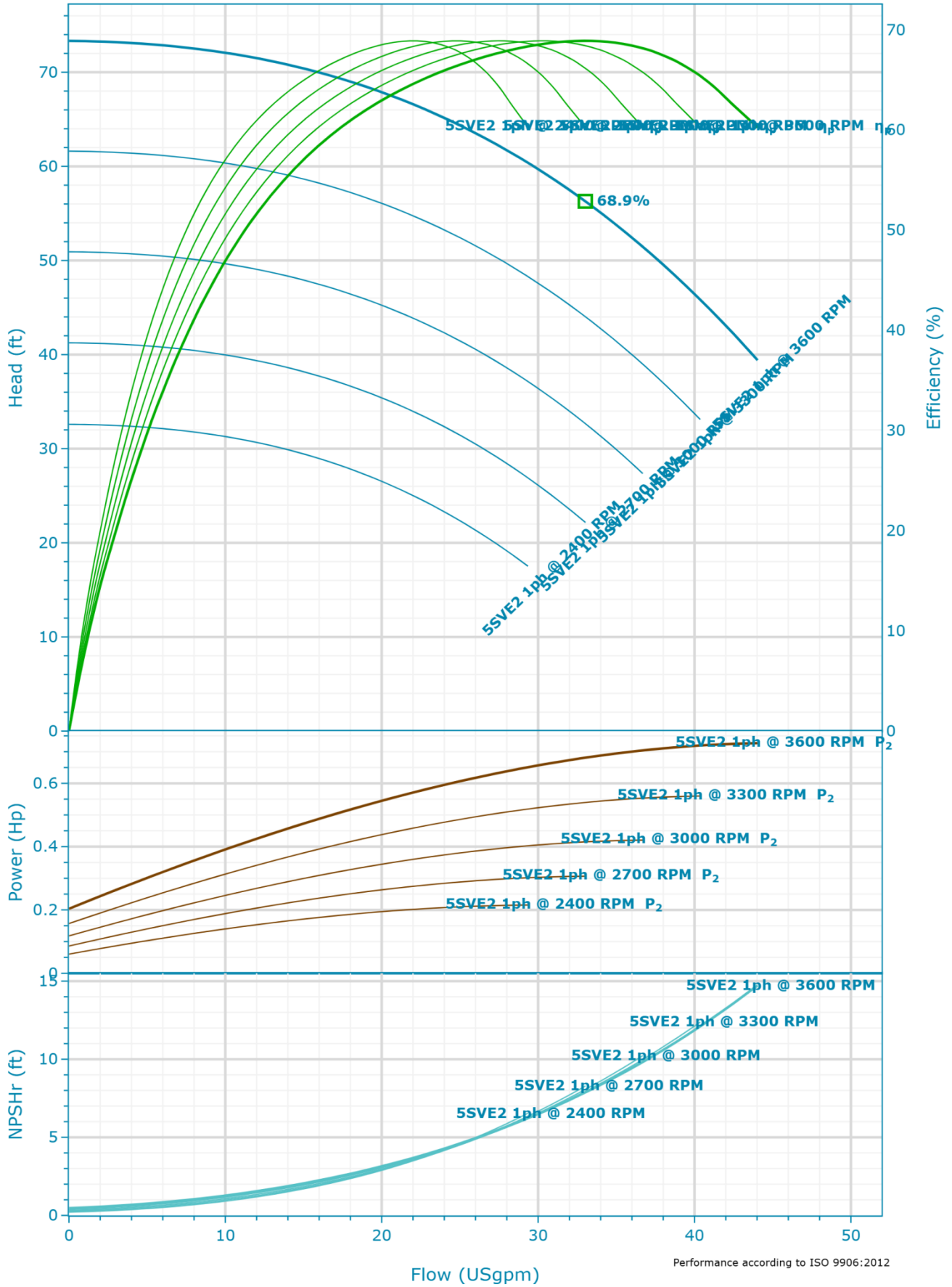
Max Flow BEP Head  
44.03 USgpm 56.29 ft

H@QMin Max Operating Pressure  
73.33 ft 31.75 psi

H@QMax Max P2  
39.4 ft 0.73 Hp

BEP  
68.9 %

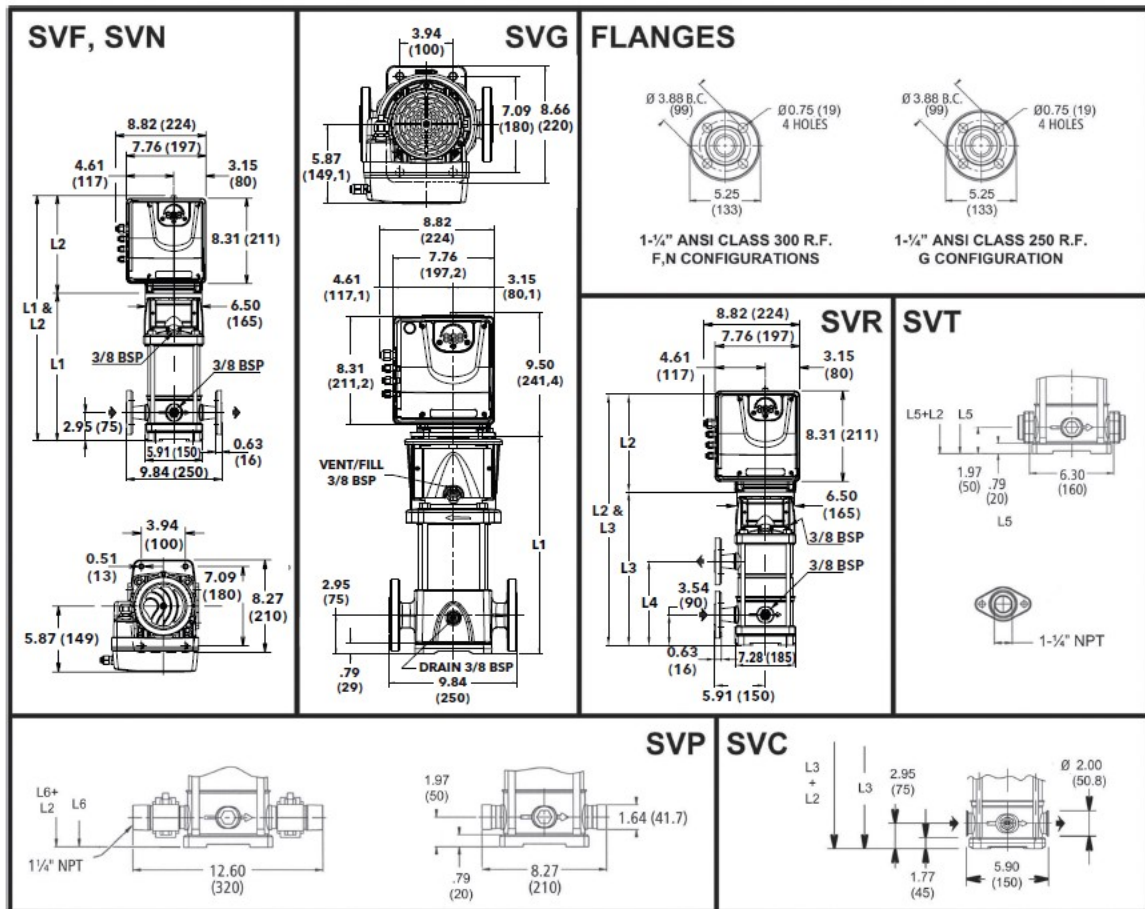
**5SVE2GB3LM0 | Variable Speed Curve**



Performance according to ISO 9906:2012

**5SVE2GB3LM0** | Dimensional Data & Drawing

**1, 3, 5SVE SERIES - SINGLE PHASE VERSION**  
**DIMENSIONS AND WEIGHTS**



All dimensions are in inches (mm).

Drawing is preliminary and is subject to change.

**Dimensions**

| Dimension | Value               | Weight       |
|-----------|---------------------|--------------|
| L1        | D1 (MAX.)           | Total Weight |
| 13.1 in   | 5.2 in              | 41 lbs       |
| L2        | NEMA Frame          |              |
| 9.53 in   | 90R                 |              |
| L5        | Weight (Pump Only)  |              |
| 12.88 in  | 25 lbs              |              |
| L6        | Weight (Motor Only) |              |
| 12.88 in  | 15.87 lbs           |              |

|                  |                     |
|------------------|---------------------|
| <b>Company</b>   | PFC Equipment       |
| <b>Contact</b>   | Kelly Kresa         |
| <b>Phone No.</b> | 7633915856          |
| <b>Email</b>     | kkresa@pfcequip.com |