



Company name:

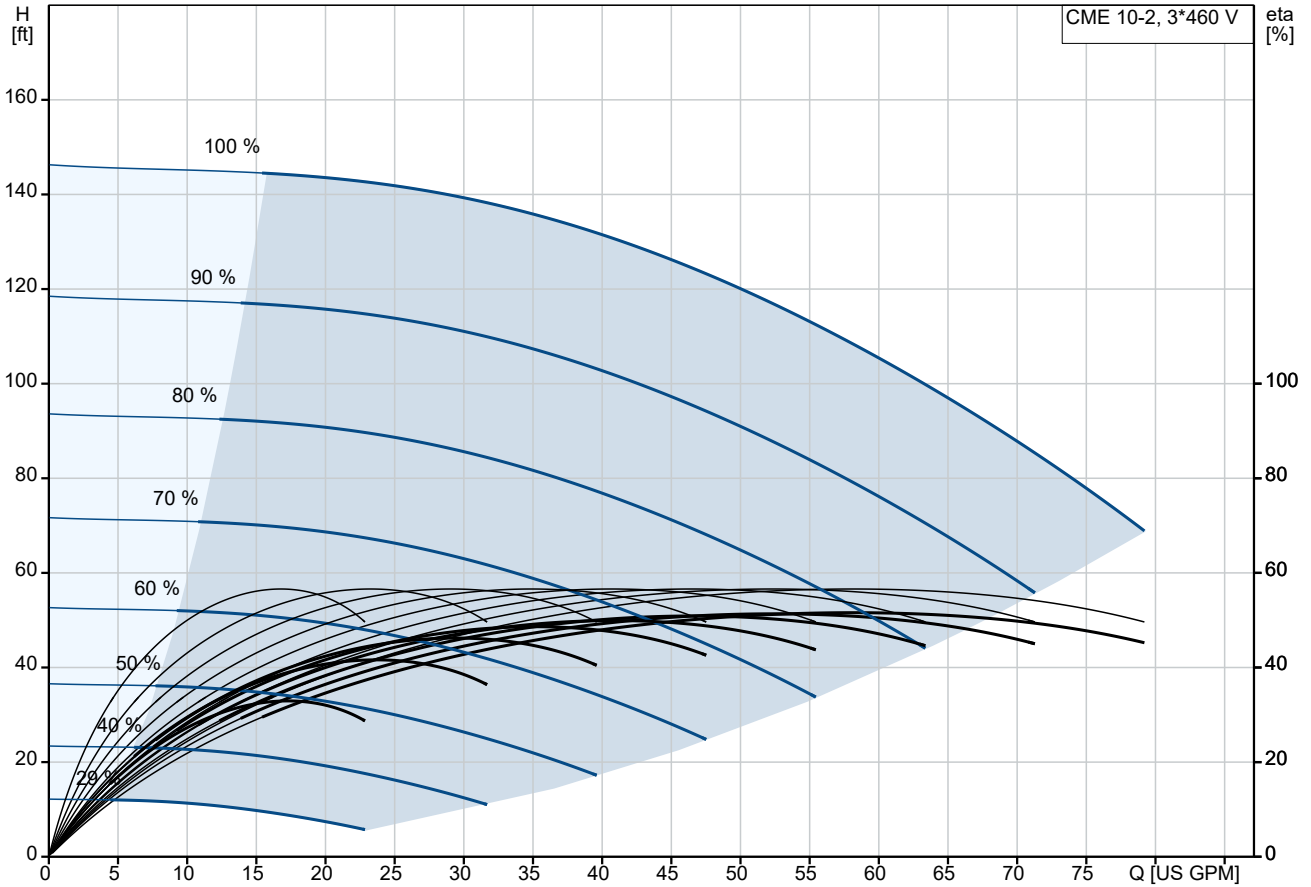
Created by:

Phone:

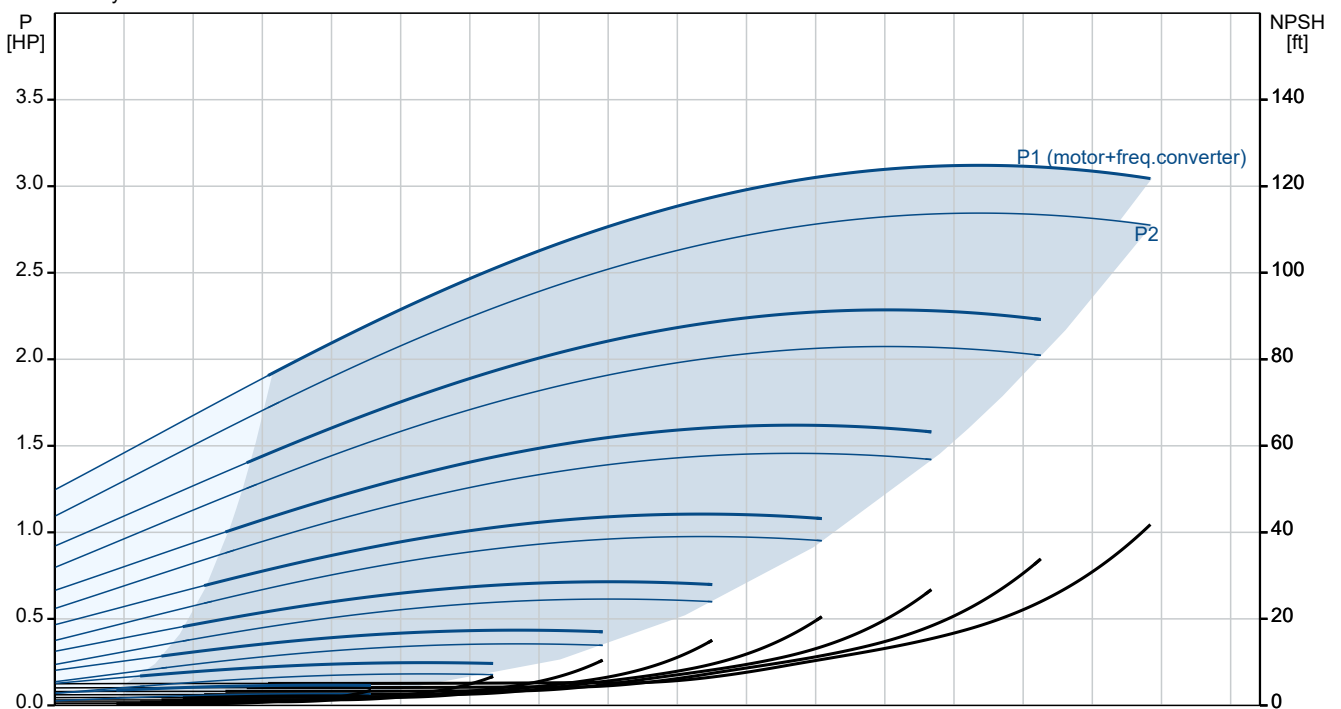
Date:

29/04/2026

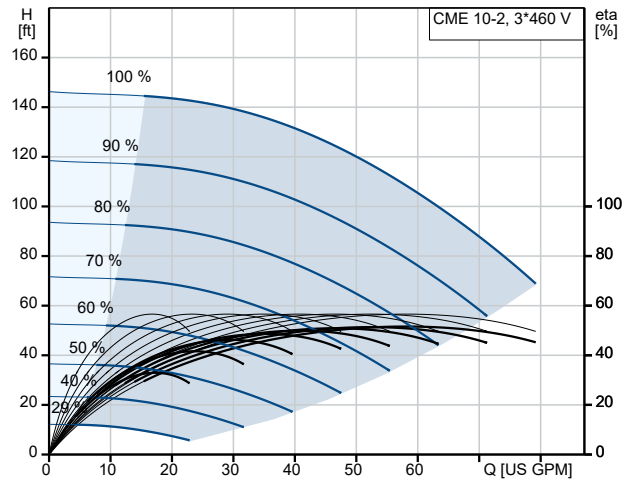
### 92610424 CME 10-2 A-S-I-E-AQQE S-A-D-N 60 Hz



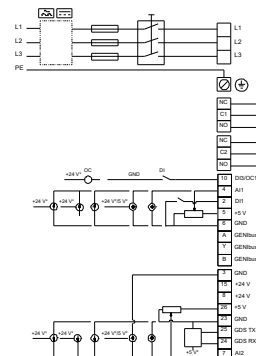
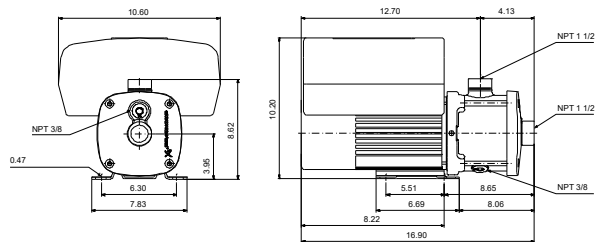
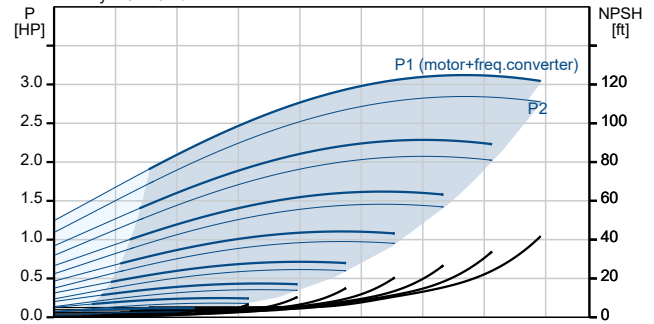
Pumped liquid = Water  
Liquid temperature during operation = 68 °F  
Density = 62.29 lb/ft<sup>3</sup>



Description	Value
<b>General information:</b>	
Product name:	CME 10-2 A-S-I-E-AQQE S-A-D-N
Product No:	92610424
EAN number:	5715117031971
<b>Technical:</b>	
Pump speed on which pump data are based:	3480 rpm
Rated flow:	52.8 US GPM
Rated flow:	52.8 US GPM
Rated head:	116.3 ft
Rated head:	116.3 ft
Impellers:	2
Primary shaft seal:	AQQE
Code for shaft seal:	AQQE
Approvals:	CE,EAC,CURUS,UKCA
Approvals for drinking water:	WRAS,ACS,NSF61,UBA
Curve tolerance:	ISO9906:2012 3B
Pump version:	A
Model:	A
<b>Materials:</b>	
Type key, code for materials:	I
Type key, code for rubber components. E = EPDM, V=FKM:	E
Pump housing:	Stainless steel EN 1.4301 AISI 304
Impeller:	Stainless steel EN 1.4301 AISI 304
Material code:	I
Code for rubber:	E
<b>Installation:</b>	
Range of ambient temperature:	-4 .. 131 °F
Maximum operating pressure:	232.06 psi
Max pressure at stated temp:	232 psi / 194 °F 145 psi / 250 °F
Type key, code for pipework connection:	S
Type of connection:	NPT(F)
Size of inlet connection:	1 1/2 inch
Size of outlet connection:	1 1/2 inch
Terminal box position:	12
Connect code:	S
<b>Liquid:</b>	
Pumped liquid:	Water
Liquid temperature range:	-4 .. 248 °F
Selected liquid temperature:	68 °F
Density:	62.29 lb/ft <sup>3</sup>
<b>Electrical data:</b>	
Motor standard:	NEMA
Frame size:	90D
IE efficiency class:	IE5
Rated power - P2:	3 HP
Rated power - P2:	2.95 HP
Mains frequency:	60 Hz
Suitable for 50/60 Hz (Yes/No):	Y
Rated voltage:	3 x 380-500 V



Pumped liquid = Water  
Liquid temperature during operation = 68 °F  
Density = 62.29 lb/ft<sup>3</sup>





Company name:

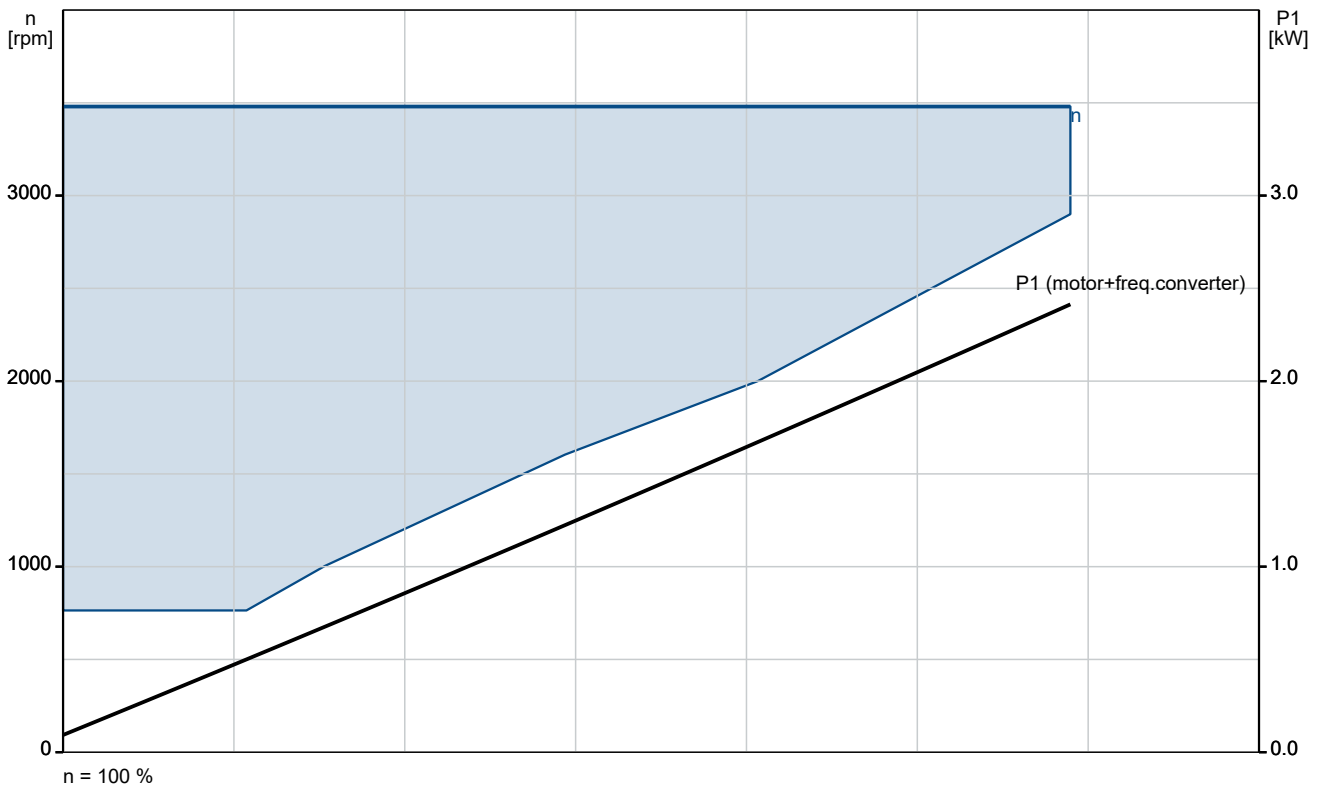
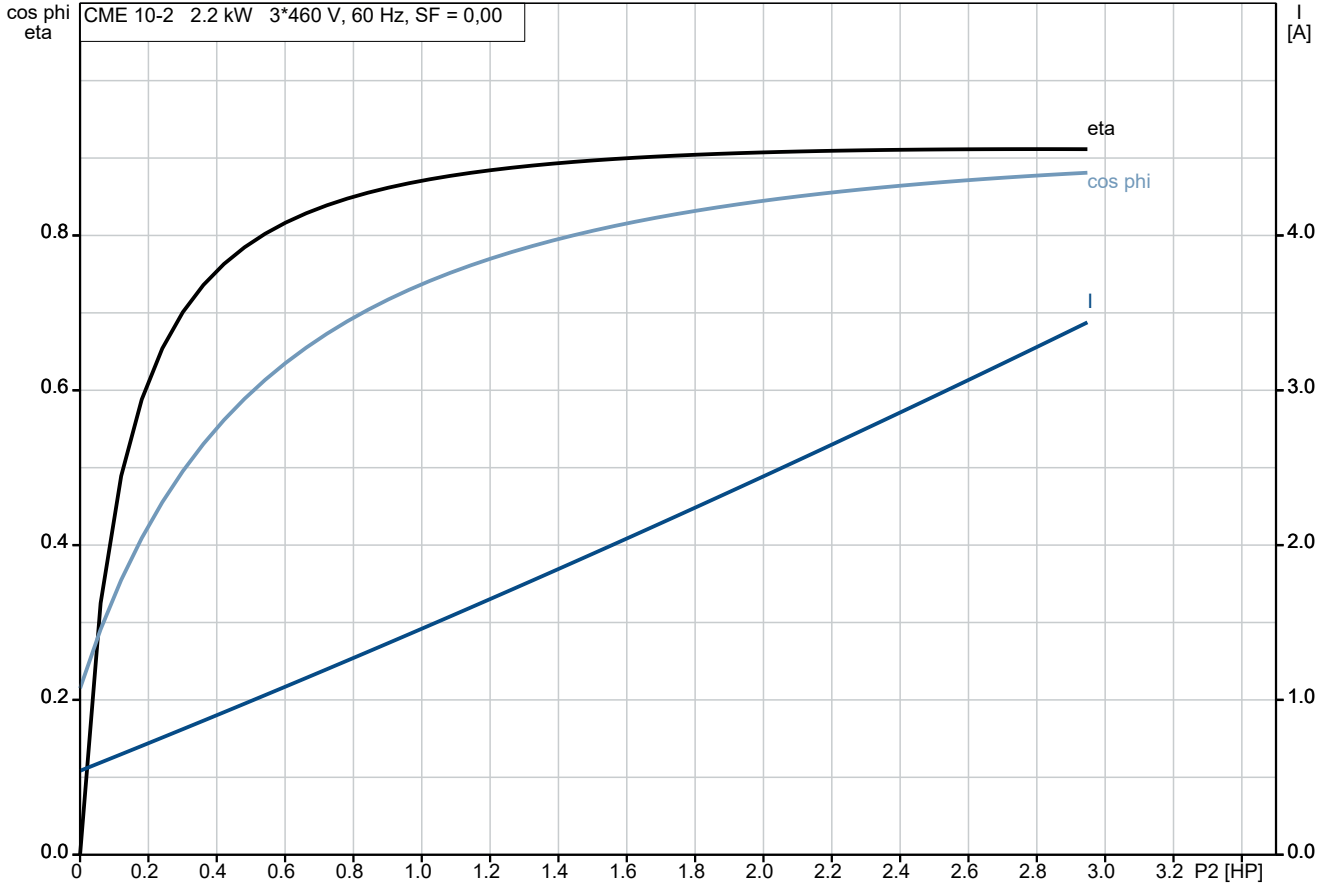
Created by:

Phone:

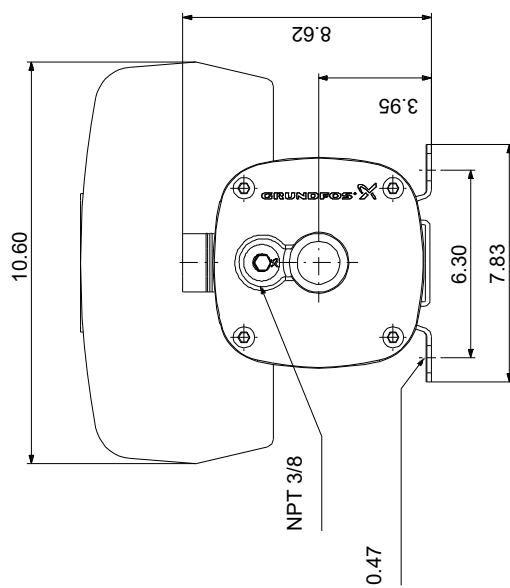
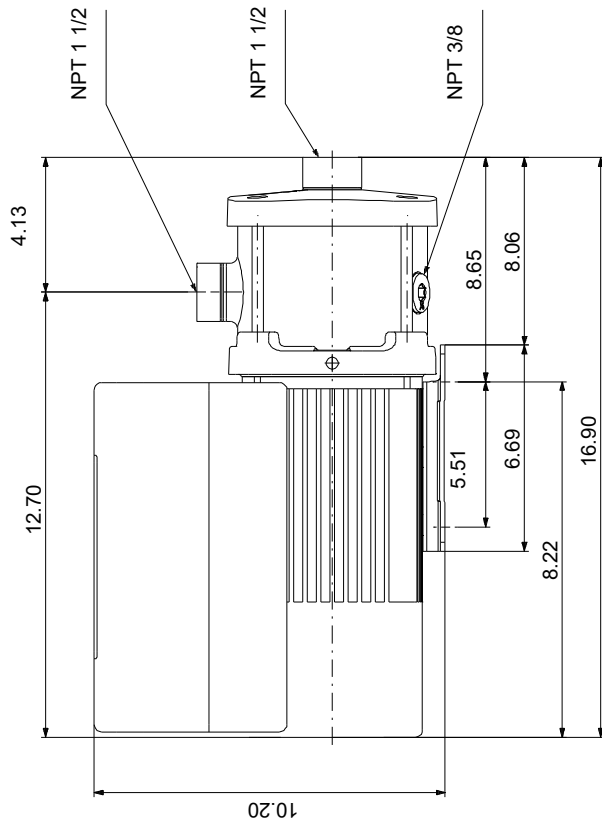
Date: 29/04/2026

Description	Value
Rated voltage:	3 x 380-500 V V
Service factor:	0.00
Rated current:	4.15-3.4 A
Rated speed:	2900 - 4000 rpm
Enclosure class (IEC 34-5):	IP55
Insulation class (IEC 85):	F
Ex-protection standard:	NONE
Cable included (Yes/No):	N
<b>Controls:</b>	
Terminal box position:	12
Frequency converter:	Built-in
<b>Others:</b>	
Minimum efficiency index, MEI $\geq$ :	0.52
Net weight:	52.7 lb
Gross weight:	56.9 lb

## 92610424 CME 10-2 A-S-I-E-AQQE S-A-D-N 60 Hz

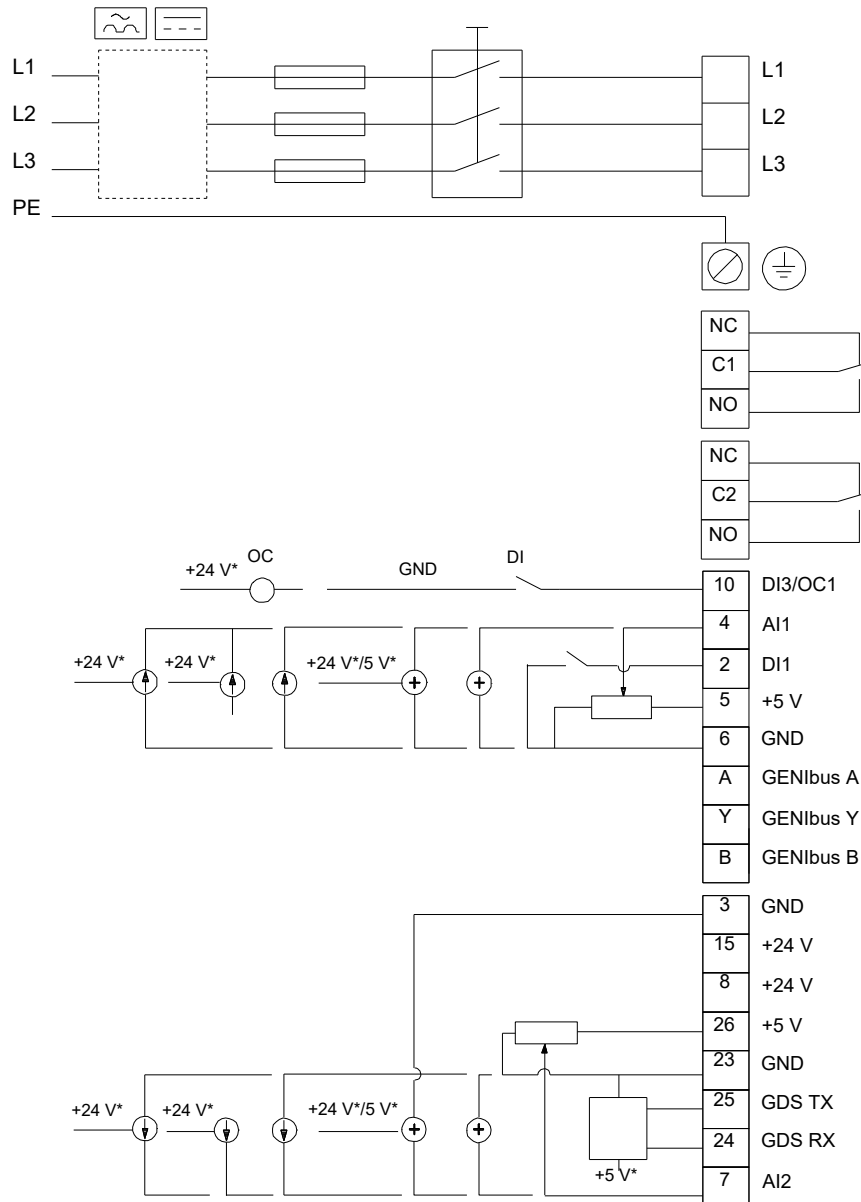


## 92610424 CME 10-2 A-S-I-E-AQQE S-A-D-N 60 Hz



Note! All units are in [in] unless others are stated.  
Disclaimer: This simplified dimensional drawing does not show all details.

## 92610424 CME 10-2 A-S-I-E-AQQE S-A-D-N 60 Hz



Note! All units are in [in] unless others are stated.